

KD-Validated Anti-Annexin A11 Mouse Monoclonal Antibody



Catalog #: 63499

Aliases

ANXA11; Annexin A11; Annexin XI; ANX11; Calcyclin-Associated Annexin 50; 56 KDa Autoantigen; Annexin-11; CAP-50; Epididymis Secretory Sperm Binding Protein; IBMWMA; ALS23; CAP50

Background

Gene Name: ANXA11

NCBI Gene Entry: [311](#)

UniProt Entry: [P50995](#)

Application Information

Molecular Weight: Predicted, 54 kDa; observed, 50 kDa

Clonality: Mouse monoclonal antibody

Clone ID: 24GB6225

Species Reactivity: Human, mouse, rat

Applications Tested: Western blotting (WB), flow cytometry (FCM), immunocytochemistry (IC)

Immunogen

Recombinant protein of human ANXA11

Isotype

Mouse IgG1

Storage Buffer

Supplied in PBS (pH 7.4) containing 50% glycerol, and 0.02% sodium azide.

Storage

Store at -20 °C for one year.

Recommended Dilutions

Western Blotting (WB): 1:500-1:2,500

Flow Cytometry (FCM): 1:2,000

Immunocytochemistry (IC): 1:100-1:1,000

Note: This product is for research use only.

SUPPORT

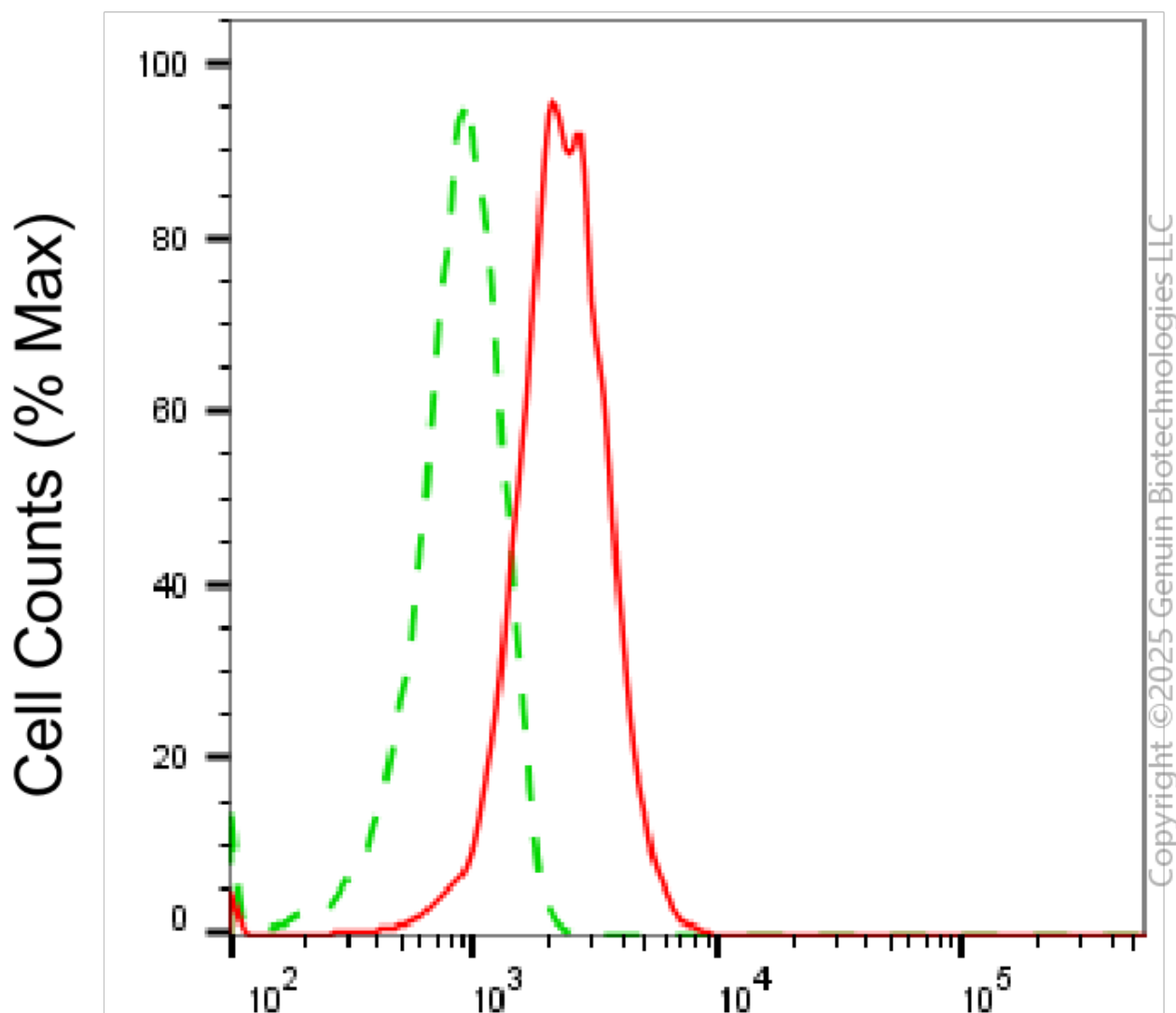
SUPPORT@GENUINBIOTECH.COM
TEL: +1-540-855-7041

ORDERS

SALES@GENUINBIOTECH.COM
FAX: +1-540-855-7041

WWW.GENUINBIOTECH.COM

Validation Data



Annexin A11-Alexa Fluor® 647

Flow cytometric analysis of Annexin A11 expression in HepG2 cells using anti-Annexin A11 antibody (Cat#63499, 1:2,000). Green, isotype control; red, Annexin A11.

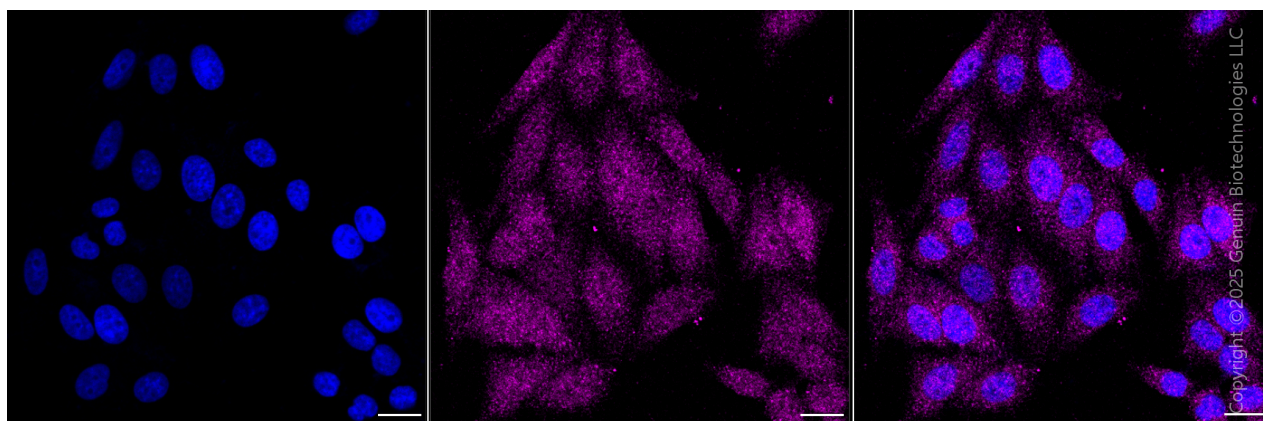
SUPPORT

SUPPORT@GENUINBIOTECH.COM
TEL: +1-540-855-7041

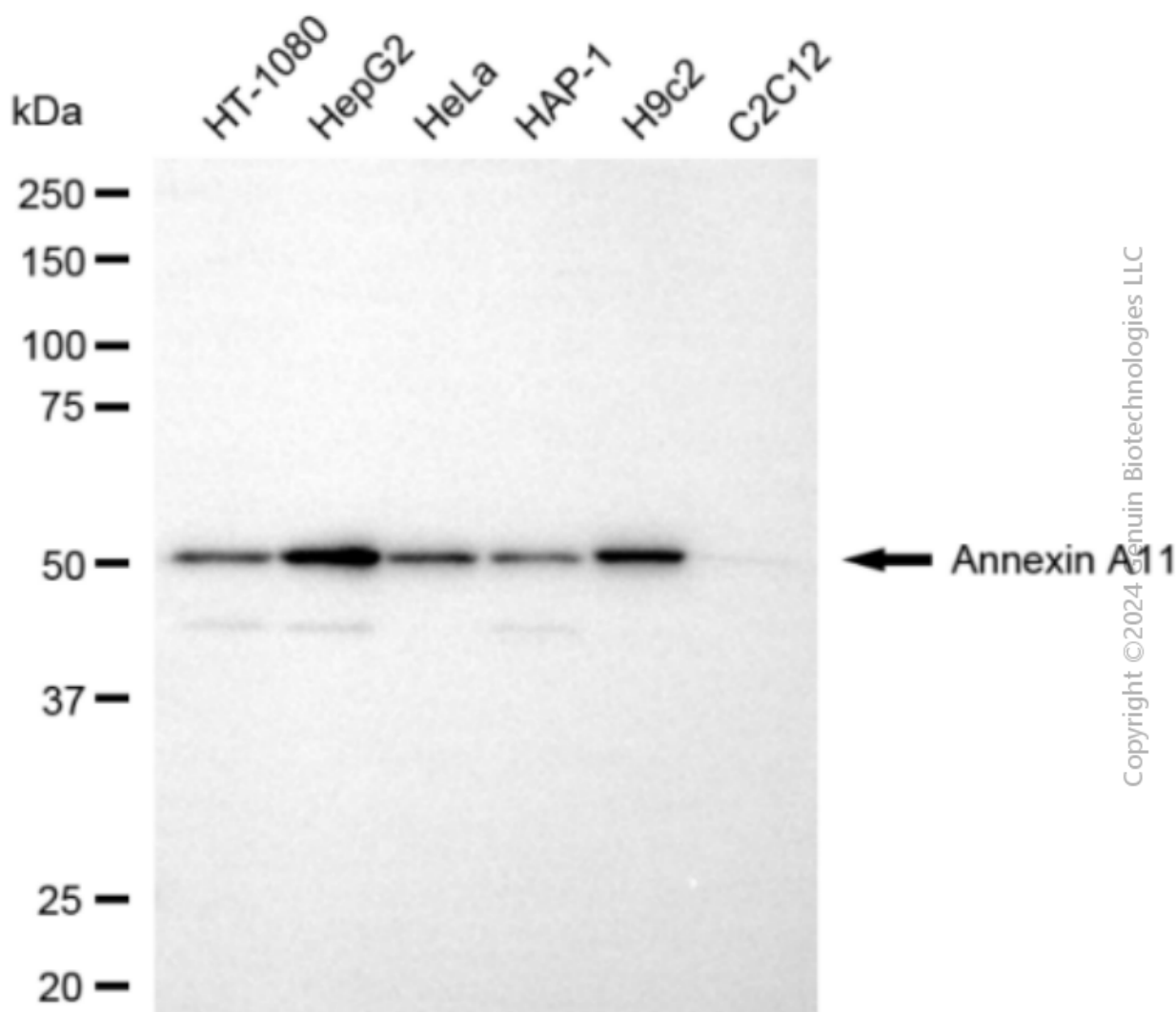
ORDERS

SALES@GENUINBIOTECH.COM
FAX: +1-540-855-7041

WWW.GENUINBIOTECH.COM



Immunocytochemical staining of HepG2 cells with anti-Annexin A11 antibody (Cat#63499, 1:1,000) . Nuclei were stained blue with DAPI; Annexin A11 was stained magenta with Alexa Fluor® 647. Images were taken using Leica stellaris 5. Protein abundance based on laser Intensity and Smart Gain □ Low. Scale bar, 20 μm.



SUPPORT

SUPPORT@GENUINBIOTECH.COM
TEL: +1-540-855-7041

ORDERS

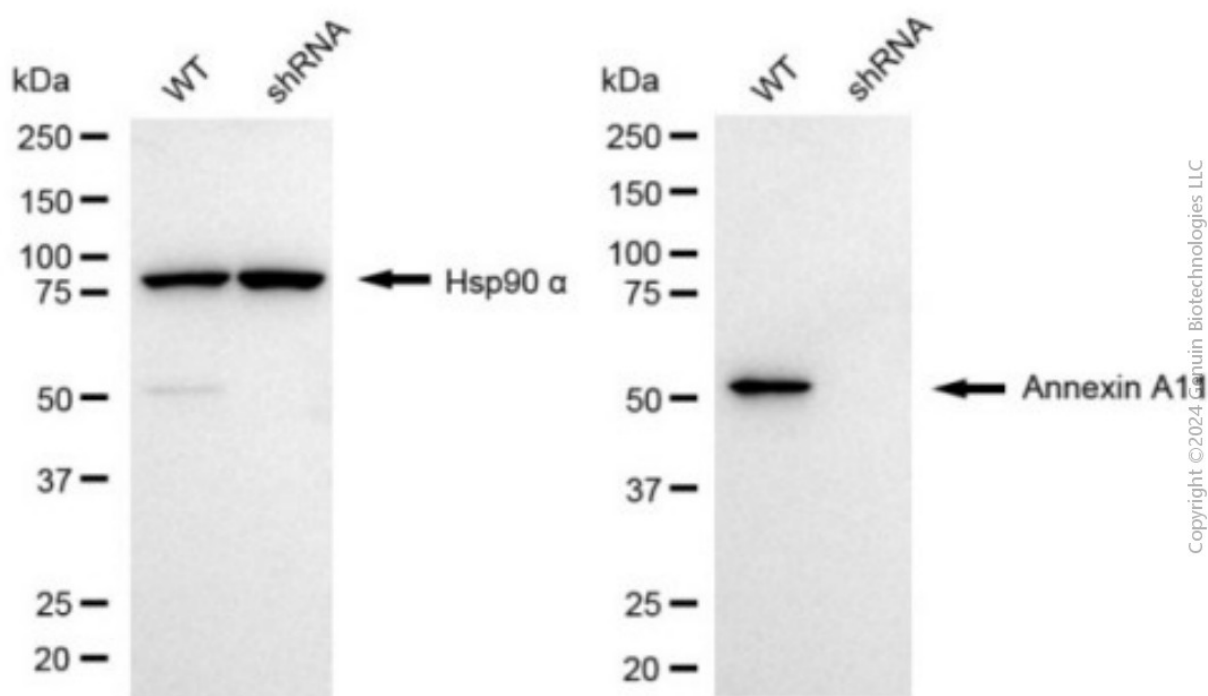
SALES@GENUINBIOTECH.COM
FAX: +1-540-855-7041

WWW.GENUINBIOTECH.COM

KD-Validated Anti-Annexin A11 Mouse Monoclonal Antibody

PAGE 4

Western blotting analysis using anti-annexin A11 antibody (Cat#63499). Total cell lysates (30 µg) from various cell lines were loaded and separated by SDS-PAGE. The blot was incubated with anti-annexin A11 antibody (Cat#63499, 1:2,500) and HRP-conjugated goat anti-mouse secondary antibody (Cat#101, 1:20,000) respectively. Image was developed using FeQ™ ECL Substrate Kit (Cat#226).



Western blotting analysis using anti-annexin A11 antibody (Cat#63499). Annexin A11 expression in wild type (WT) and annexin A11 (ANXA11) shRNA knockdown (KD) HeLa cells with 20 µg of total cell lysates. Hsp90 α serves as a loading control. The blot was incubated with anti-annexin A11 antibody (Cat#63499, 1:2,500) and HRP-conjugated goat anti-mouse secondary antibody (Cat#101, 1:20,000) respectively. Image was developed using NaQ™ ECL Substrate Kit (Cat#716).

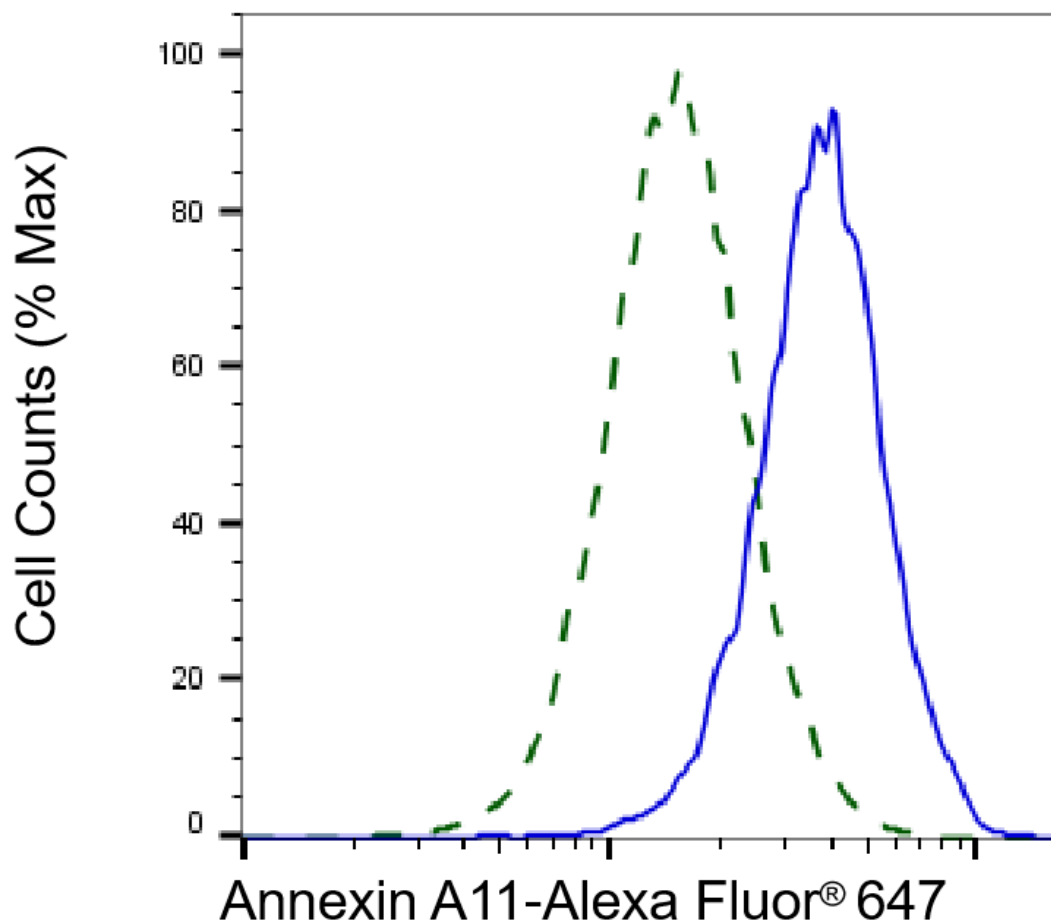
SUPPORT

SUPPORT@GENUINBIOTECH.COM
TEL: +1-540-855-7041

ORDERS

SALES@GENUINBIOTECH.COM
FAX: +1-540-855-7041

WWW.GENUINBIOTECH.COM



Copyright ©2025 Genuin Biotechnologies LLC

Validation of Annexin A11 knockdown using flow cytometry. Wild-type(WT, Blue) and knockdown(KD, Green) HeLa cells were stained with anti-Annexin A11 antibody (Cat#63499, 1:2,000) and analyzed using BD flow cytometer.