

KD-Validated Anti-Annexin A1 Mouse Monoclonal Antibody



Catalog #: 63500

Aliases

ANXA1; Annexin A1; ANX1; LPC1; Phospholipase A2 Inhibitory Protein; Chromobindin-9; Calpactin II; Calpactin-2; Annexin-1; Epididymis Secretory Sperm Binding Protein; Annexin I (Lipocortin I); Lipocortin I; Annexin I; P35

Background

Gene Name: ANXA1

NCBI Gene Entry: [301](#)

UniProt Entry: [P04083](#)

Application Information

Molecular Weight: Predicted, 39 kDa; observed, 33 kDa

Clonality: Mouse monoclonal antibody

Clone ID: 24GB6230

Species Reactivity: Human, rat

Applications Tested: Western blotting (WB), flow cytometry (FCM), immunocytochemistry (IC)

Immunogen

Recombinant protein of human ANXA1

Isotype

Mouse IgG1

Storage Buffer

Supplied in PBS (pH 7.4) containing 50% glycerol, and 0.02% sodium azide.

Storage

Store at -20 °C for one year.

Recommended Dilutions

Western Blotting (WB): 1:1,000-1:5,000

Flow Cytometry (FCM): 1:2,000

Immunocytochemistry (IC): 1:100-1:1,000

Note: This product is for research use only.

SUPPORT

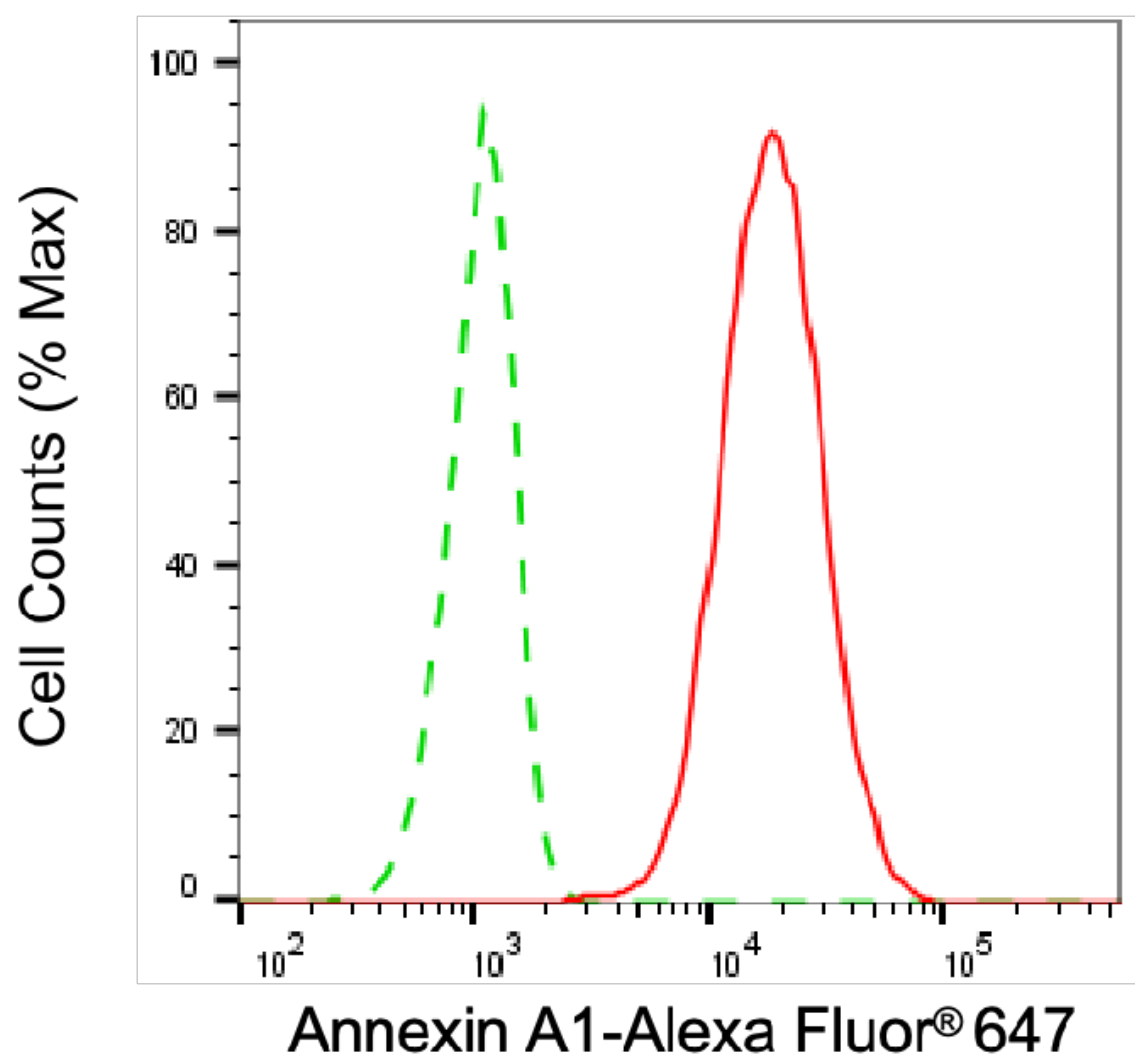
SUPPORT@GENUINBIOTECH.COM
TEL: +1-540-855-7041

ORDERS

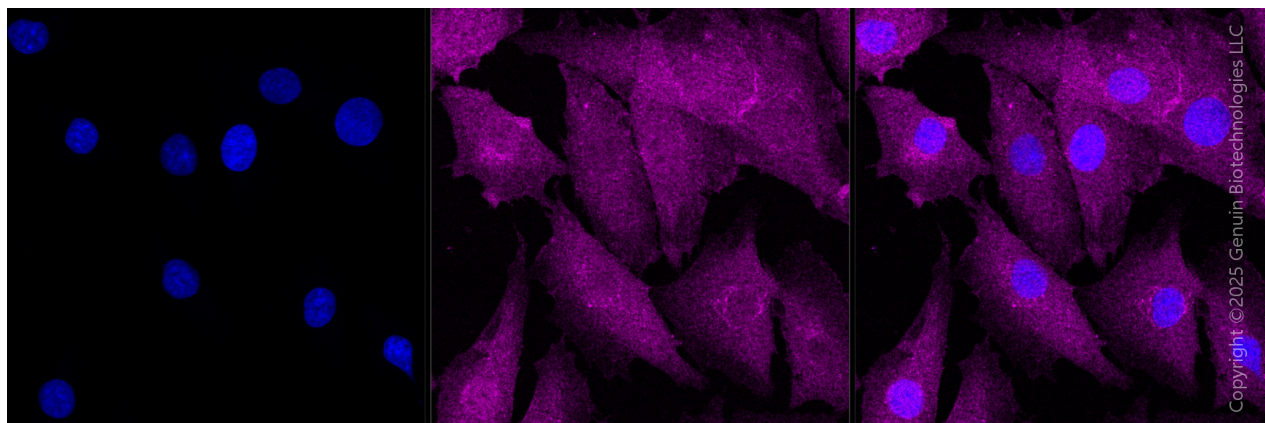
SALES@GENUINBIOTECH.COM
FAX: +1-540-855-7041

WWW.GENUINBIOTECH.COM

Validation Data



Flow cytometric analysis of Annexin A1 expression in H9c2 cells using anti-Annexin A1 antibody (Cat#63500, 1:2,000). Green, isotype control; red, Annexin A1.



SUPPORT

SUPPORT@GENUINBIOTECH.COM
TEL: +1-540-855-7041

ORDERS

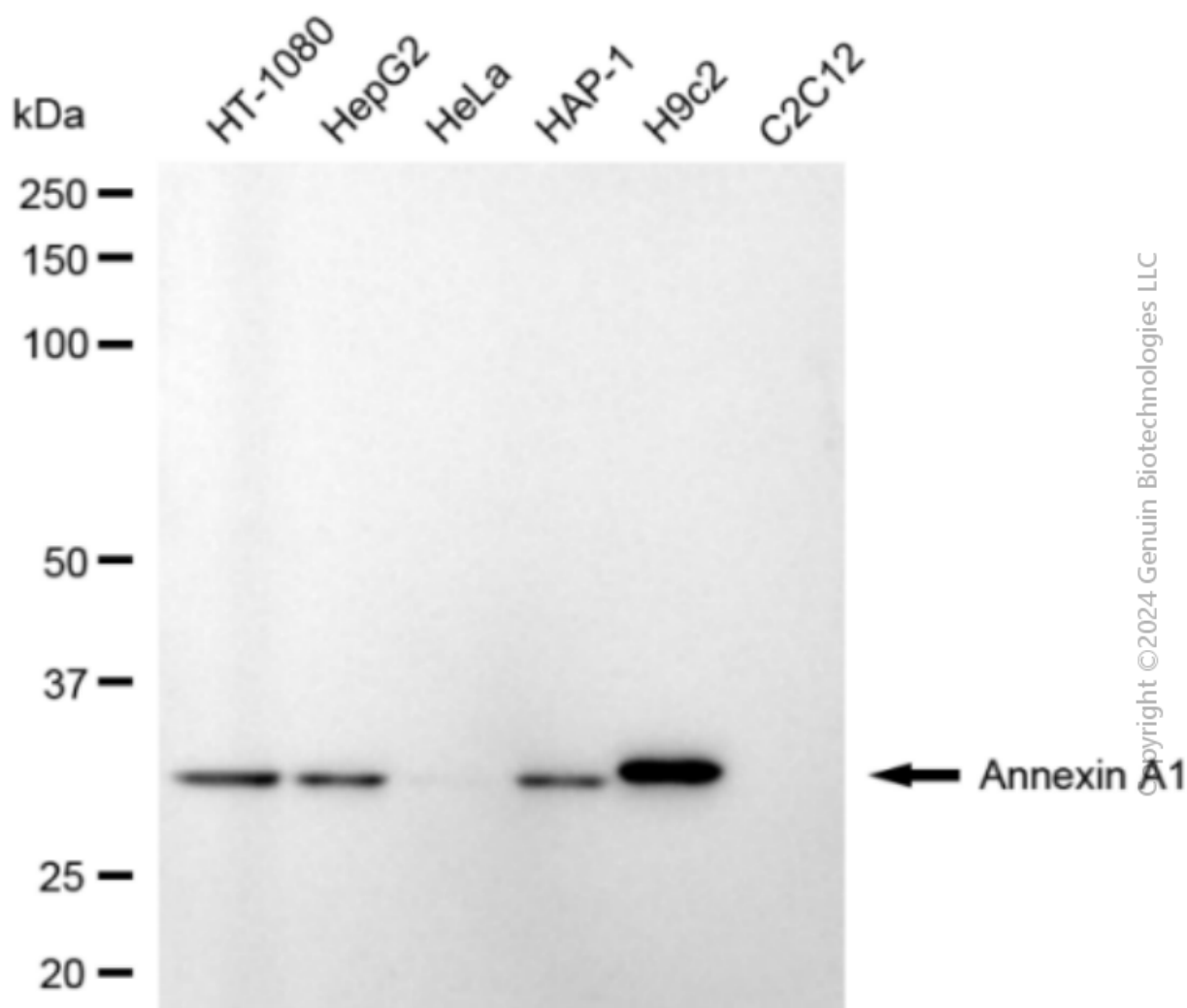
SALES@GENUINBIOTECH.COM
FAX: +1-540-855-7041

WWW.GENUINBIOTECH.COM

KD-Validated Anti-Annexin A1 Mouse Monoclonal Antibody

PAGE 3

Immunocytochemical staining of H9C2 cells with anti-Annexin A1 antibody (Cat#63500, 1:1,000). Nuclei were stained blue with DAPI; Annexin A1 was stained magenta with Alexa Fluor® 647. Images were taken using Leica stellaris 5. Protein abundance based on laser Intensity and smart gain □ Medium. Scale bar, 20 μm.



Western blotting analysis using anti-annexin A1 antibody (Cat#63500). Total cell lysates (30 μg) from various cell lines were loaded and separated by SDS-PAGE. The blot was incubated with anti-annexin A1 antibody (Cat#63500, 1:5,000) and HRP-conjugated goat anti-mouse secondary antibody (Cat#101, 1:20,000) respectively. Image was developed using NaQ™ ECL Substrate Kit (Cat#716).

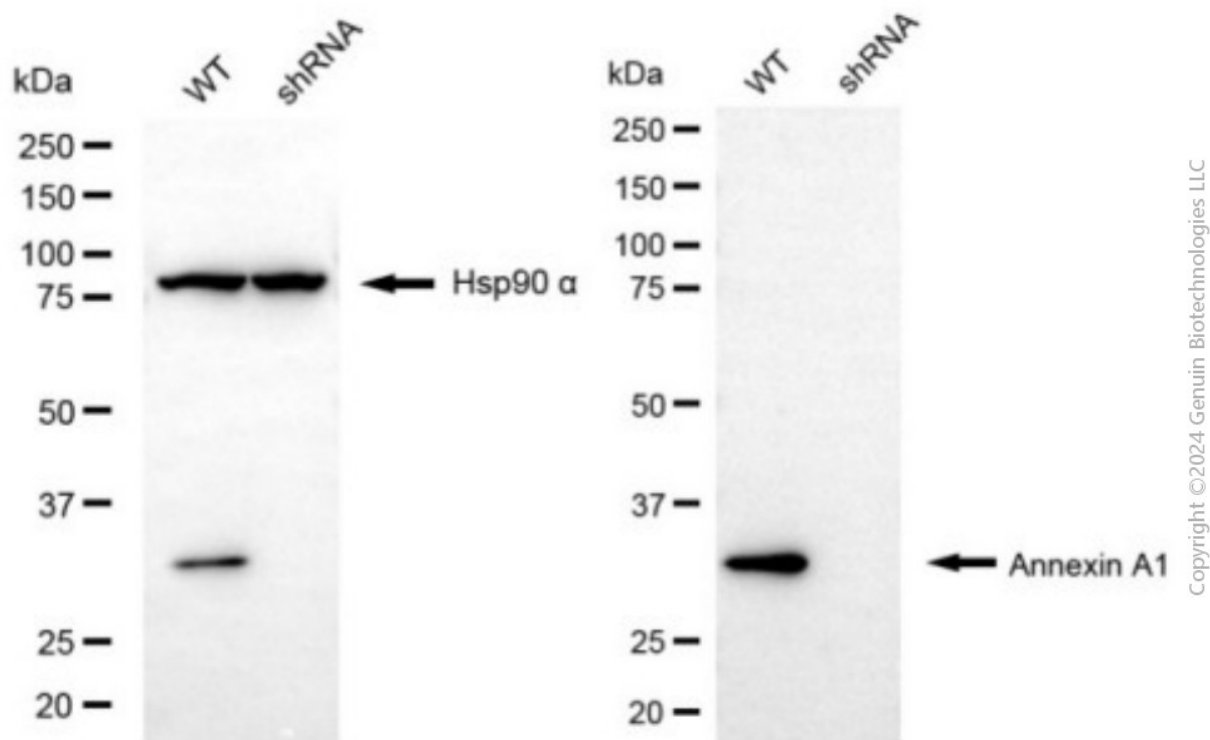
SUPPORT

SUPPORT@GENUINBIOTECH.COM
TEL: +1-540-855-7041

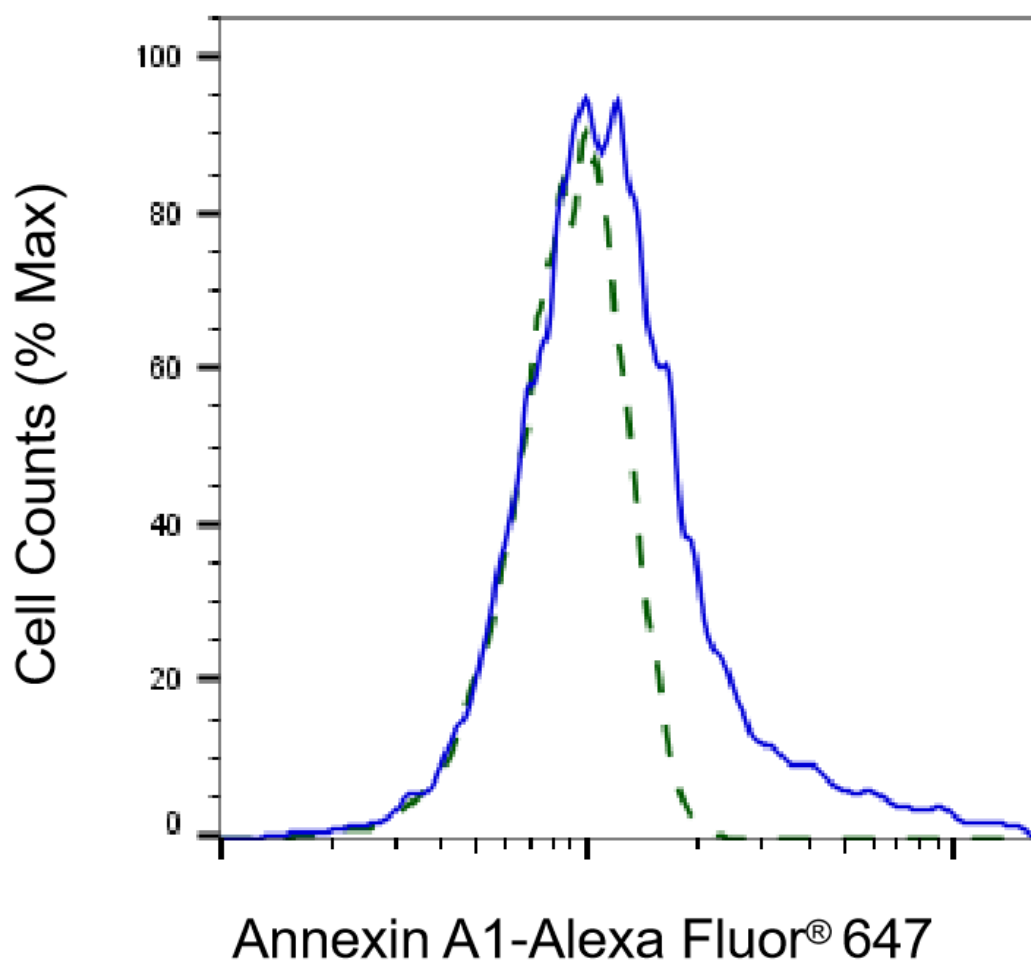
ORDERS

SALES@GENUINBIOTECH.COM
FAX: +1-540-855-7041

WWW.GENUINBIOTECH.COM



Western blotting analysis using anti-annexin A1 antibody (Cat#63500). Annexin A1 expression in wild type (WT) and annexin A1 (ANXA1) shRNA knockdown (KD) HeLa cells with 20 μ g of total cell lysates. Hsp90 α serves as a loading control. The blot was incubated with anti-annexin A1 antibody (Cat#63500, 1:5,000) and HRP-conjugated goat anti-mouse secondary antibody (Cat#101, 1:20,000) respectively. Image was developed using NaQ™ ECL Substrate Kit (Cat#716).



Validation of Annexin A1 knockdown using flow cytometry. Wild-type(WT, Blue) and knockdown(KD, Green) HeLa cells were stained with anti-Annexin A1 antibody (Cat#63500, 1:2,000) and analyzed using BD flow cytometer.