

KD-Validated Anti-ARHGDIA Mouse Monoclonal Antibody



Catalog #: 63501

Aliases

ARHGDIA; Rho GDP Dissociation Inhibitor Alpha; RHOGDI; GDIA1; Rho GDP Dissociation Inhibitor (GDI) Alpha; Rho GDP-Dissociation Inhibitor 1; GDP-Dissociation Inhibitor, Aplysia RAS-Related 1; Epididymis Secretory Sperm Binding Protein Li 47e; Rho-GDI Alpha; HEL-S-47e; Rho GDI 1; RHOGDI-1; NPHS8

Background

Gene Name: ARHGDIA

NCBI Gene Entry: [396](#)

UniProt Entry: [P52565](#)

Application Information

Molecular Weight: Predicted, 23 kDa; observed, 23 kDa

Clonality: Mouse monoclonal antibody

Clone ID: 24GB6235

Species Reactivity: Human, mouse, rat

Applications Tested: Western blotting (WB), flow cytometry (FCM), immunocytochemistry (IC)

Immunogen

Recombinant protein of human ARHGDIA

Isotype

Mouse IgG1

Storage Buffer

Supplied in PBS (pH 7.4) containing 50% glycerol, and 0.02% sodium azide.

Storage

Store at -20 °C for one year.

Recommended Dilutions

Western Blotting (WB): 1:500-1:2,500

Flow Cytometry (FCM): 1:1,000

Immunocytochemistry (IC): 1:100-1:1,000

SUPPORT

SUPPORT@GENUINBIOTECH.COM
TEL: +1-540-855-7041

ORDERS

SALES@GENUINBIOTECH.COM
FAX: +1-540-855-7041

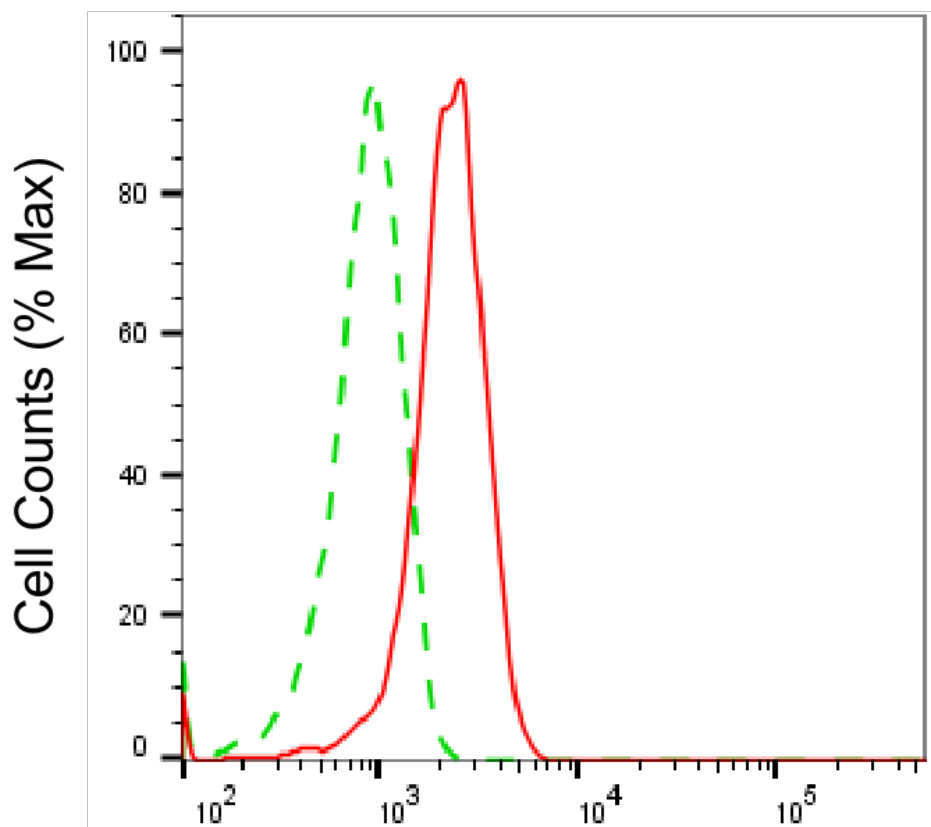
WWW.GENUINBIOTECH.COM

KD-Validated Anti-ARHGDIA Mouse Monoclonal Antibody

PAGE 2

Note: This product is for research use only.

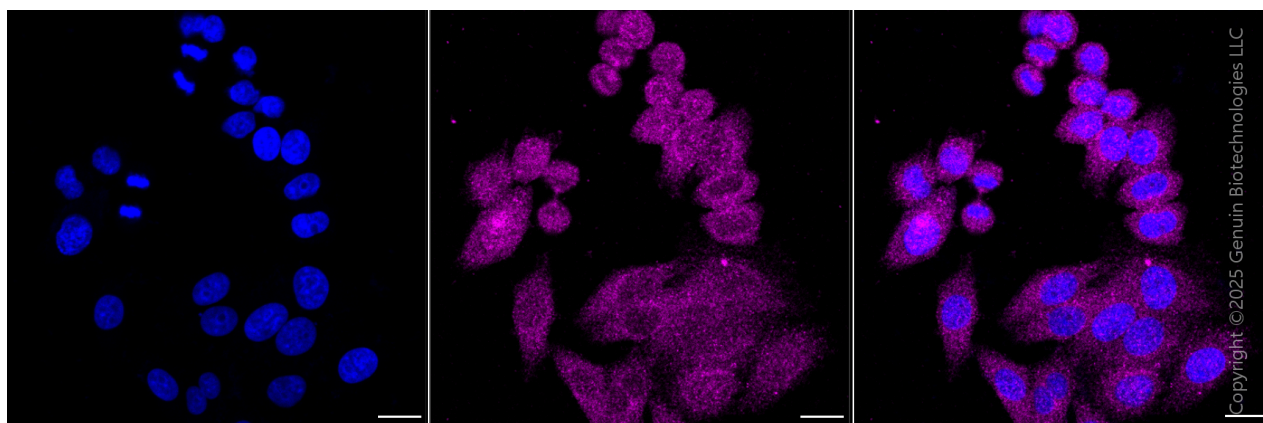
Validation Data



Copyright ©2025 Genuin Biotechnologies LLC

Rho GDP dissociation inhibitor alpha-Alexa Fluor® 647

Flow cytometric analysis of Rho GDP dissociation inhibitor alpha expression in HepG2 cells using anti-Rho GDP dissociation inhibitor alpha antibody (Cat#63501, 1:2,000). Green, isotype control; red, Rho GDP dissociation inhibitor alpha.



Copyright ©2025 Genuin Biotechnologies LLC

Immunocytochemical staining of HepG2 cells with anti-Rho GDP dissociation inhibitor alpha

SUPPORT

SUPPORT@GENUINBIOTECH.COM
TEL: +1-540-855-7041

ORDERS

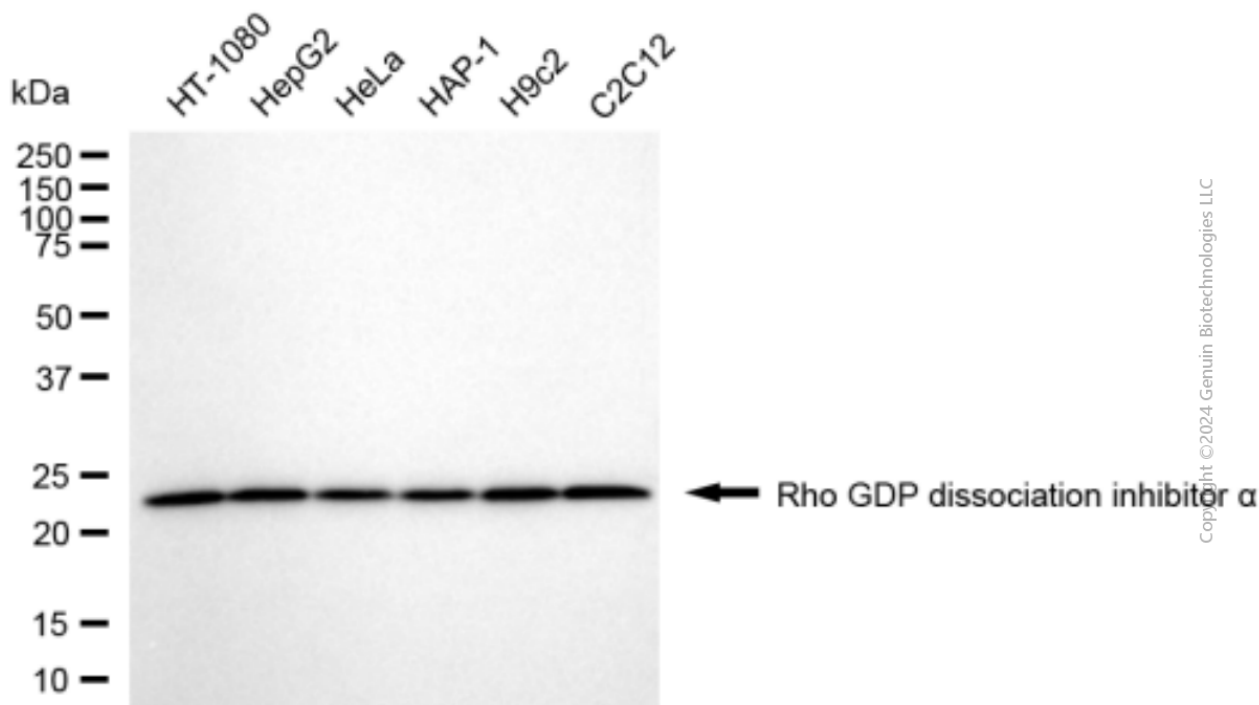
SALES@GENUINBIOTECH.COM
FAX: +1-540-855-7041

WWW.GENUINBIOTECH.COM

KD-Validated Anti-ARHGDIA Mouse Monoclonal Antibody

PAGE 3

antibody (Cat#63501, 1:1,000). Nuclei were stained blue with DAPI; Rho GDP dissociation inhibitor alpha was stained magenta with Alexa Fluor® 647. Images were taken using Leica stellaris 5. Protein abundance based on laser Intensity and Smart Gain □ Medium. Scale bar, 20 μm.



Western blotting analysis using anti-Rho GDP dissociation inhibitor alpha antibody (Cat#63501). Total cell lysates (30 μg) from various cell lines were loaded and separated by SDS-PAGE. The blot was incubated with anti-Rho GDP dissociation inhibitor alpha antibody (Cat#63501, 1:2,500) and HRP-conjugated goat anti-mouse secondary antibody (Cat#101, 1:20,000) respectively. Image was developed using NaQ™ ECL Substrate Kit (Cat#716).

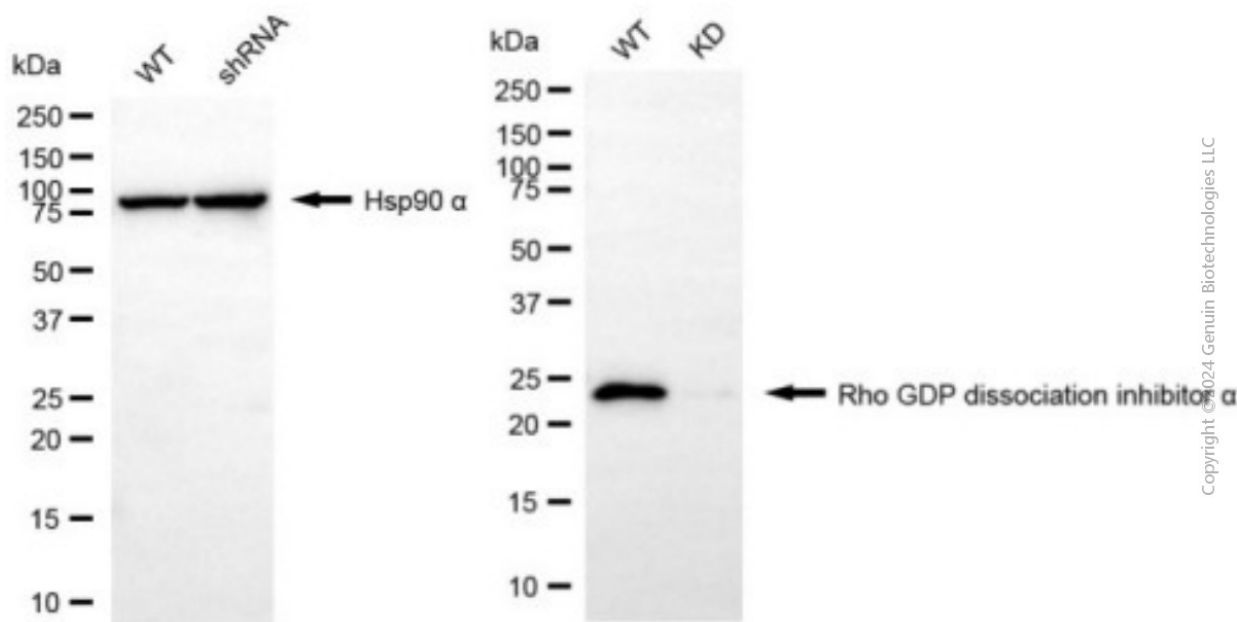
SUPPORT

SUPPORT@GENUINBIOTECH.COM
TEL: +1-540-855-7041

ORDERS

SALES@GENUINBIOTECH.COM
FAX: +1-540-855-7041

WWW.GENUINBIOTECH.COM



Western blotting analysis using anti-Rho GDP dissociation inhibitor alpha antibody (Cat#63501). Rho GDP dissociation inhibitor alpha expression in wild type (WT) and Rho GDP dissociation inhibitor alpha (ARHGDIA) knockdown (KD) HSHC cells with 20 μ g of total cell lysates. Hsp90 α serves as a loading control. The blot was incubated with anti-Rho GDP dissociation inhibitor alpha antibody (Cat#63501, 1:2,500) and HRP-conjugated goat anti-mouse secondary antibody (Cat#101, 1:20,000) respectively. Image was developed using NaQ™ ECL Substrate Kit (Cat#716).