

# KD-Validated Anti-ASCC2 Mouse Monoclonal Antibody



**Catalog #: 63525**

## Aliases

ASCC2; Activating Signal Cointegrator 1 Complex Subunit 2; ASC1p100; ASC-1 Complex Subunit P100; Trip4 Complex Subunit P100; DKFZp586O0223; FLJ21588; ASC 1 Complex Subunit P100; ASC1P100; P100; RQT3

## Background

Gene Name: ASCC2

NCBI Gene Entry: [84164](#)

UniProt Entry: [Q9H1I8](#)

## Application Information

Molecular Weight: Predicted, 86 kDa; observed, 86 kDa

Clonality: Mouse monoclonal antibody

Clone ID: 24GB6350

Species Reactivity: Human, mouse, rat

Applications Tested: Western blotting (WB), flow cytometry (FCM), immunocytochemistry (IC)

## Immunogen

Recombinant protein of human ASCC2

## Isotype

Mouse IgG1

## Storage Buffer

Supplied in PBS (pH 7.4) containing 50% glycerol, and 0.02% sodium azide.

## Storage

Store at -20 °C for one year.

## Recommended Dilutions

Western Blotting (WB): 1:500-1:2,500

Flow Cytometry (FCM): 1:2,000

Immunocytochemistry (IC): 1:100-1:1,000

**Note:** This product is for research use only.

---

### SUPPORT

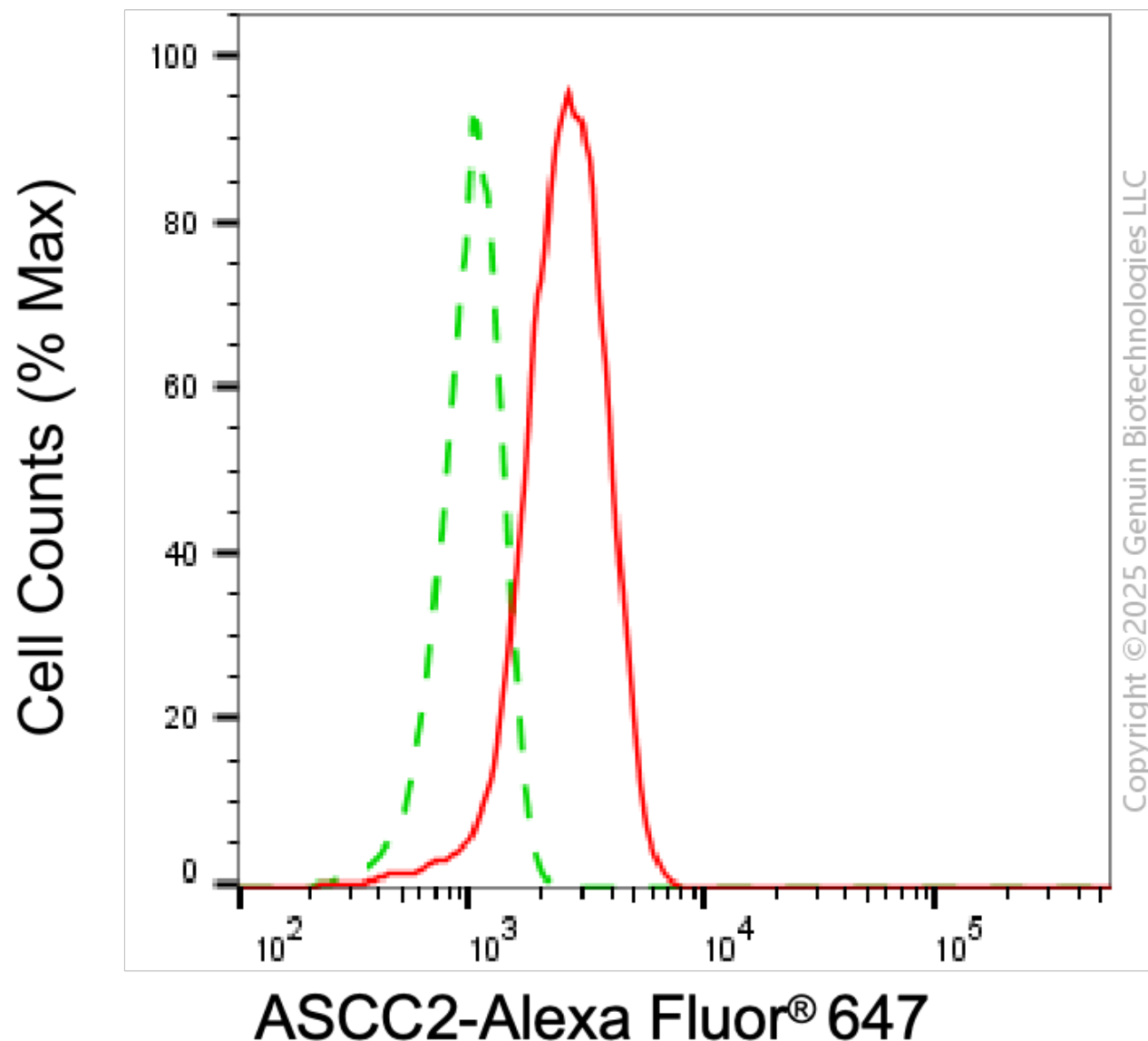
SUPPORT@GENUINBIOTECH.COM  
TEL: +1-540-855-7041

### ORDERS

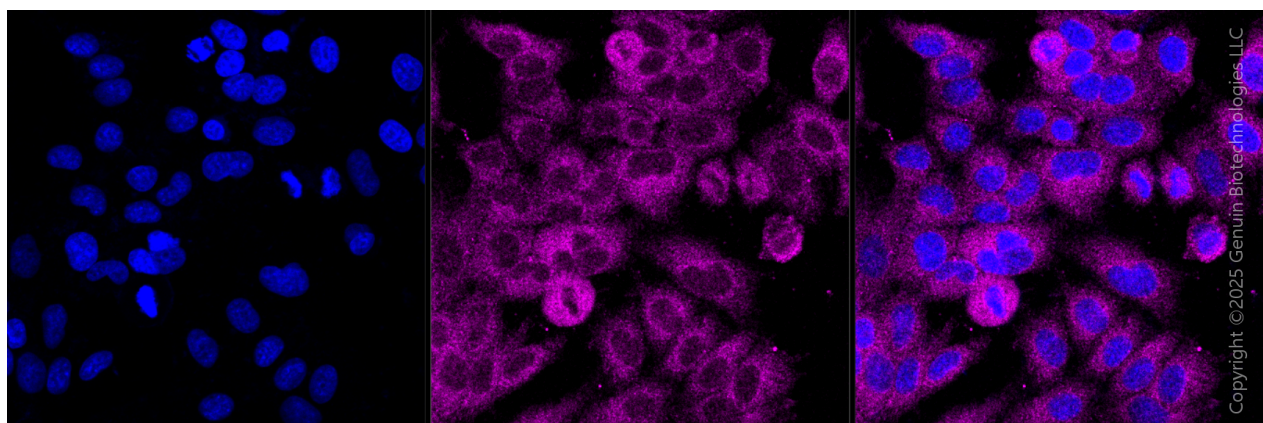
SALES@GENUINBIOTECH.COM  
FAX: +1-540-855-7041

[WWW.GENUINBIOTECH.COM](http://WWW.GENUINBIOTECH.COM)

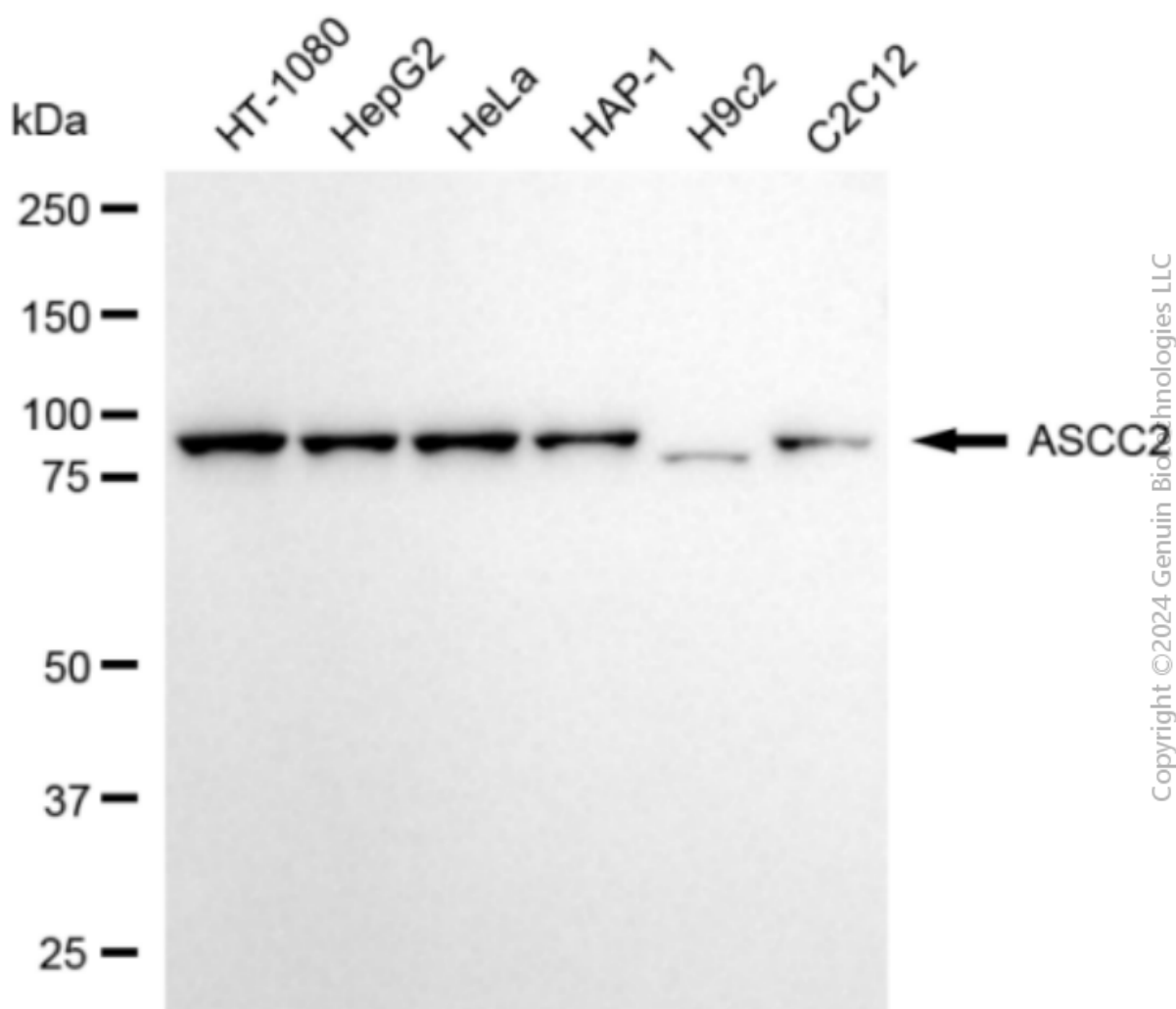
**Validation Data**



Flow cytometric analysis of ASCC2 expression in HepG2 cells using anti-ASCC2 antibody (Cat#63525, 1:2,000). Green, isotype control; red, ASCC2.



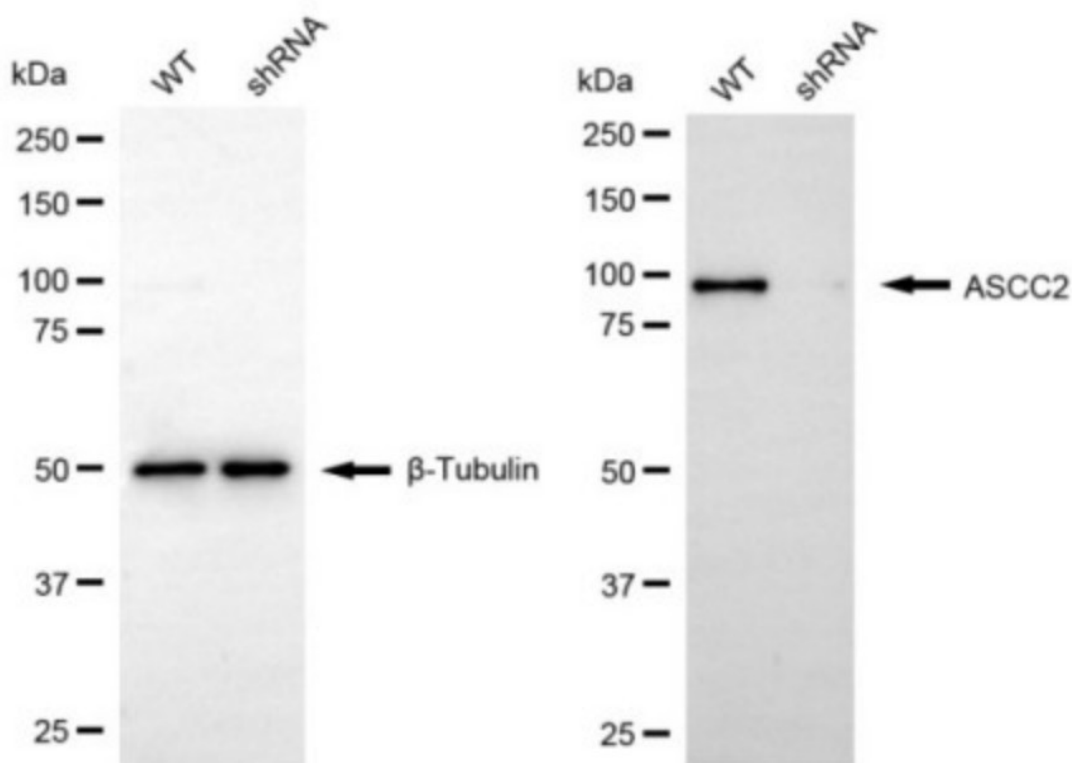
Immunocytochemical staining of HepG2 cells with anti-ASCC2 antibody (Cat#63525, 1:1,000) . Nuclei were stained blue with DAPI; ASCC2 was stained magenta with Alexa Fluor® 647. Images were taken using Leica stellaris 5. Protein abundance based on laser Intensity and Smart Gain□Low. Scale bar, 20  $\mu$ m.



## KD-Validated Anti-ASCC2 Mouse Monoclonal Antibody

PAGE 4

Western blotting analysis using anti-ASCC2 antibody (Cat#63525). Total cell lysates (30 µg) from various cell lines were loaded and separated by SDS-PAGE. The blot was incubated with anti-ASCC2 antibody (Cat#63525, 1:2,500) and HRP-conjugated goat anti-mouse secondary antibody (Cat#101, 1:20,000) respectively. Image was developed using NaQ™ ECL Substrate Kit (Cat#716).



Western blotting analysis using anti-ASCC2 antibody (Cat#63525). ASCC2 expression in wild type (WT) and ASCC2 shRNA knockdown (KD) HeLa cells with 20 µg of total cell lysates. β-Tubulin serves as a loading control. The blot was incubated with anti-ASCC2 antibody (Cat#63525, 1:2,500) and HRP-conjugated goat anti-mouse secondary antibody (Cat#101, 1:20,000) respectively. Image was developed using NaQ™ ECL Substrate Kit (Cat#716).

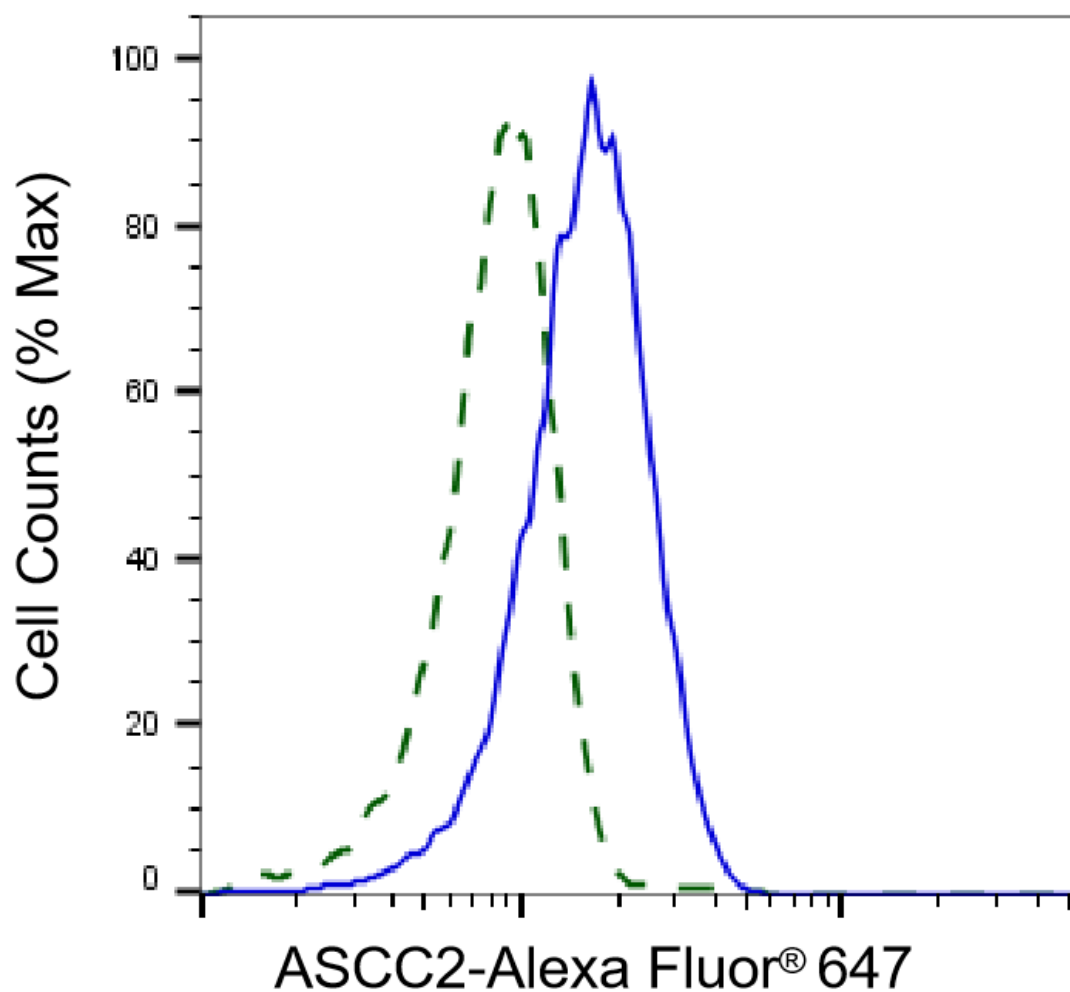
### SUPPORT

SUPPORT@GENUINBIOTECH.COM  
TEL: +1-540-855-7041

### ORDERS

SALES@GENUINBIOTECH.COM  
FAX: +1-540-855-7041

[WWW.GENUINBIOTECH.COM](http://WWW.GENUINBIOTECH.COM)



Copyright ©2025 Genuin Biotechnologies LLC

Validation of ASCC2 knockdown using flow cytometry. Wild-type(WT, Blue) and knockdown(KD, Green) HeLa cells were stained with anti-ASCC2 antibody (Cat#63525, 1:2,000) and analyzed using BD flow cytometer.