

KD-Validated Anti-NIMA Related Kinase 9 Mouse Monoclonal Antibody



Catalog #: 63526

Aliases

NEK9; NIMA Related Kinase 9; NERCC; NERCC1; Nek8; NIMA (Never In Mitosis Gene A)-Related Kinase 9; Serine/Threonine-Protein Kinase Nek9; NimA-Related Protein Kinase 9; DKFZp434D0935; Nercc1 Kinase; EC 2.7.11.1; MGC16714 2 5Never In Mitosis A-Related Kinase 9; NimA-Related Kinase 8; KIAA1995; LCCS10; APUG; NEK8; NC

Background

Gene Name: NEK9

NCBI Gene Entry: [91754](#)

UniProt Entry: [Q8TD19](#)

Application Information

Molecular Weight: Predicted, 107 kDa; observed, 107 kDa

Clonality: Mouse monoclonal antibody

Clone ID: 24GB6355

Species Reactivity: Human, rat

Applications Tested: Western blotting (WB), flow cytometry (FCM), immunocytochemistry (IC)

Immunogen

Recombinant protein of human NEK9

Isotype

Mouse IgG1

Storage Buffer

Supplied in PBS (pH 7.4) containing 50% glycerol, and 0.02% sodium azide.

Storage

Store at -20 °C for one year.

Recommended Dilutions

Western Blotting (WB): 1:1,000-1:5,000

Flow Cytometry (FCM): 1:2,000

Immunocytochemistry (IC): 1:100-1:1,000

SUPPORT

SUPPORT@GENUINBIOTECH.COM
TEL: +1-540-855-7041

ORDERS

SALES@GENUINBIOTECH.COM
FAX: +1-540-855-7041

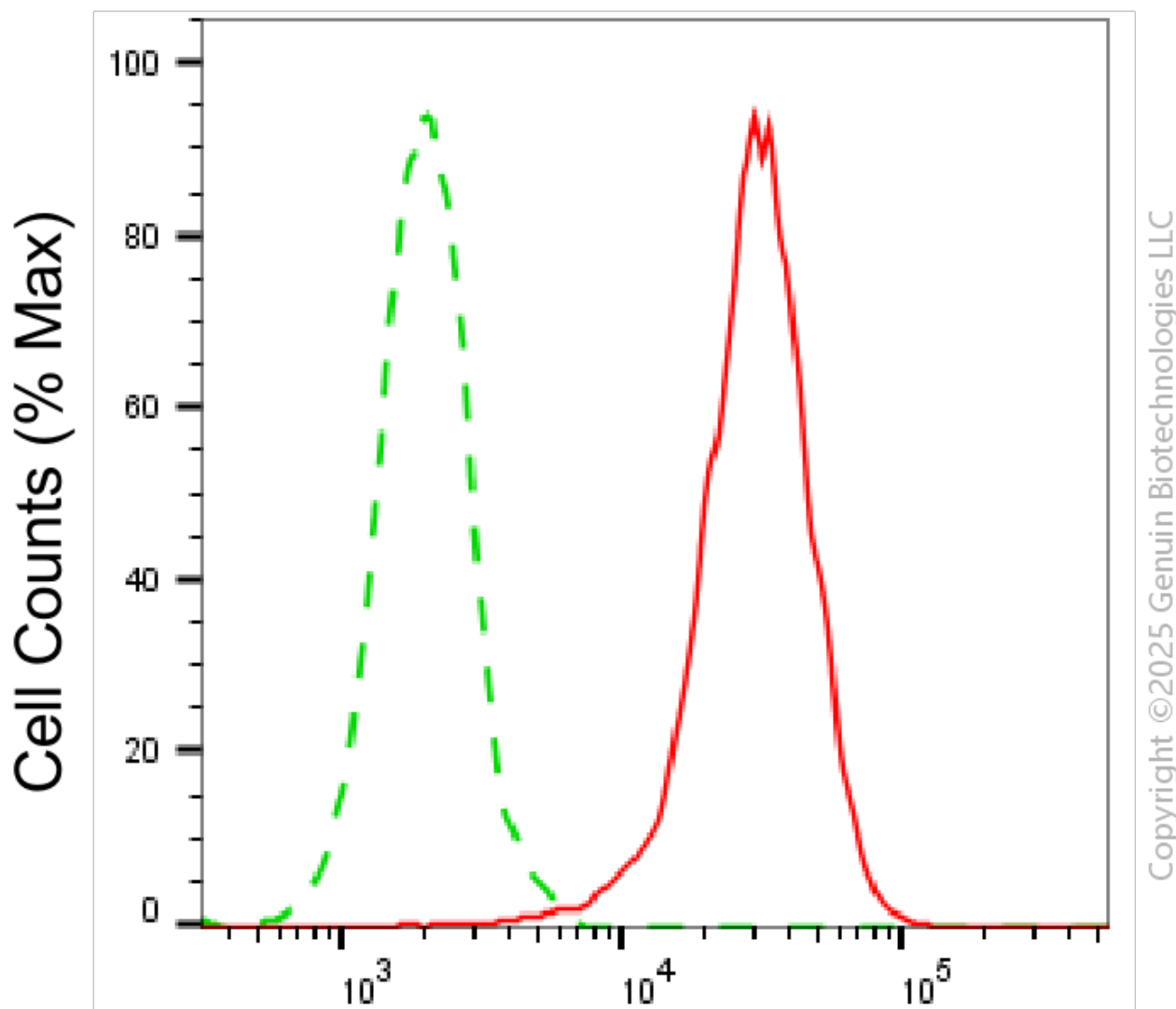
WWW.GENUINBIOTECH.COM

KD-Validated Anti-NIMA Related Kinase 9 Mouse Monoclonal Antibody

PAGE 2

Note: This product is for research use only.

Validation Data



NIMA related kinase 9-Alexa Fluor® 647

Flow cytometric analysis of NIMA related kinase 9 expression in HeLa cells using anti-NIMA related kinase 9 antibody (Cat#63526, 1:2,000). Green, isotype control; red, NIMA related kinase 9.

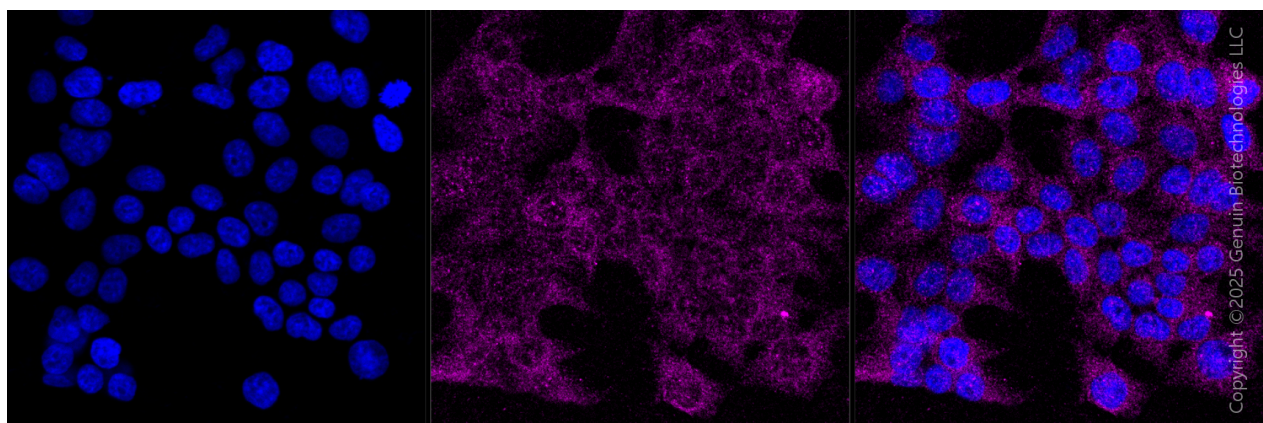
SUPPORT

SUPPORT@GENUINBIOTECH.COM
TEL: +1-540-855-7041

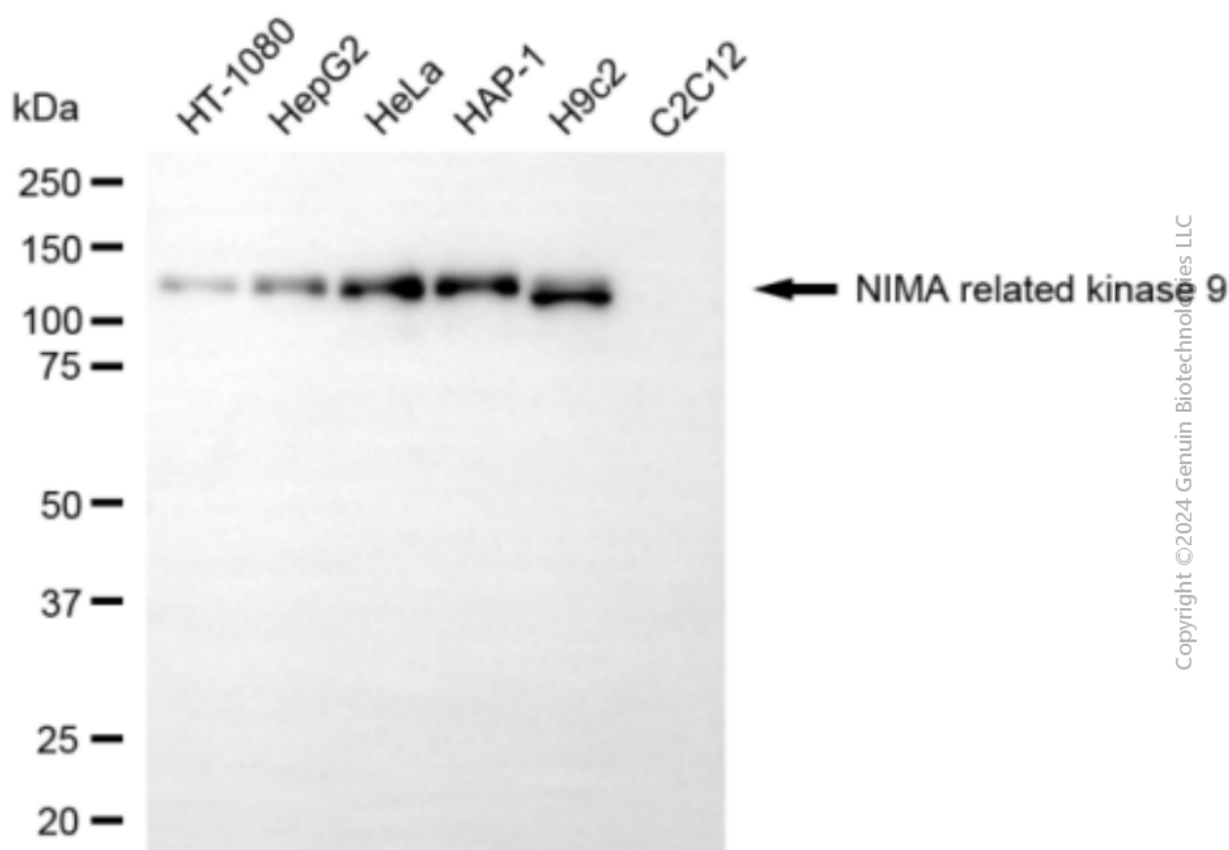
ORDERS

SALES@GENUINBIOTECH.COM
FAX: +1-540-855-7041

WWW.GENUINBIOTECH.COM



Immunocytochemical staining of HeLa cells with anti-NIMA related kinase 9 antibody (Cat#63526, 1:1,000). Nuclei were stained blue with DAPI; NIMA related kinase 9 was stained magenta with Alexa Fluor® 647. Images were taken using Leica stellaris 5. Protein abundance based on laser Intensity and Smart Gain □ Low. Scale bar, 20 μ m.

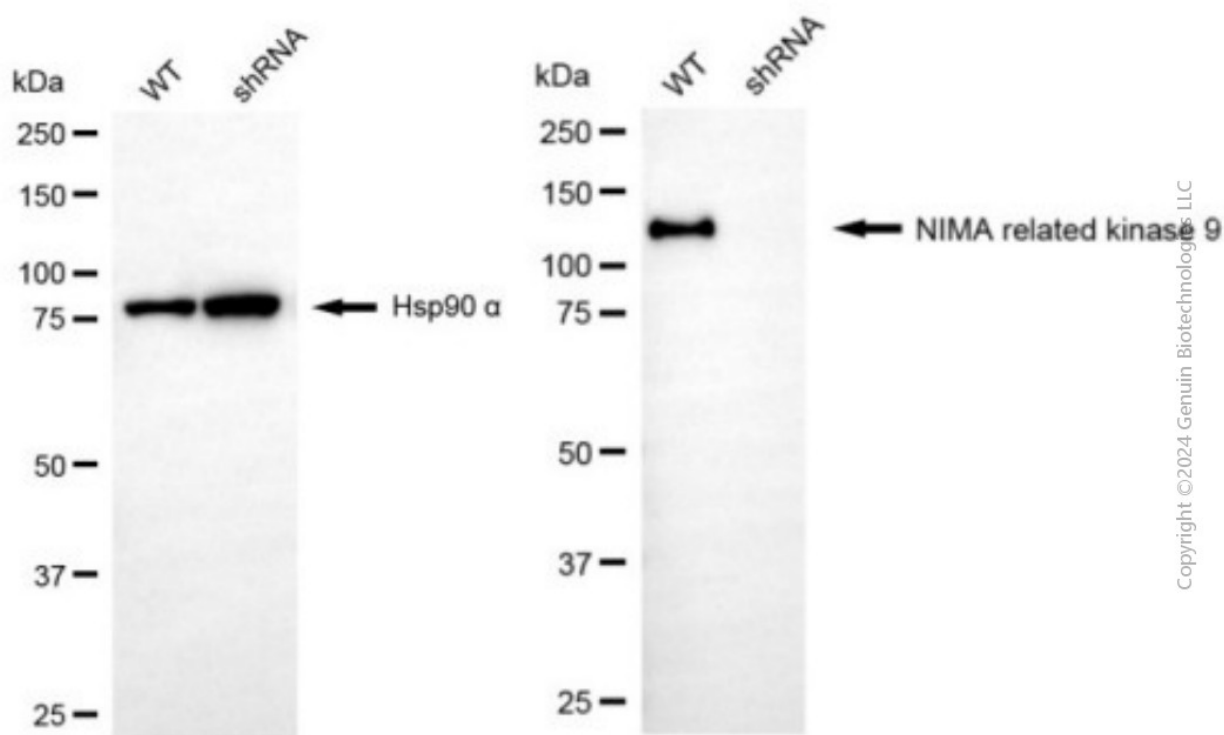


Western blotting analysis using anti-NIMA related kinase 9 antibody (Cat#63526). Total cell lysates (30 μ g) from various cell lines were loaded and separated by SDS-PAGE. The blot was incubated with anti-NIMA related kinase 9 antibody (Cat#63526, 1:5,000) and HRP-conjugated goat anti-mouse secondary antibody (Cat#101, 1:20,000) respectively. Image was developed using

KD-Validated Anti-NIMA Related Kinase 9 Mouse Monoclonal Antibody

PAGE 4

FeQ™ ECL Substrate Kit (Cat#226).



Western blotting analysis using anti-NIMA related kinase 9 antibody (Cat#63526). NIMA related kinase 9 expression in wild type (WT) and NIMA related kinase 9 (NEK9) shRNA knockdown (KD) HeLa cells with 20 µg of total cell lysates. Hsp90 α serves as a loading control. The blot was incubated with anti-NIMA related kinase 9 antibody (Cat#63526, 1:5,000) and HRP-conjugated goat anti-mouse secondary antibody (Cat#101, 1:20,000) respectively. Image was developed using NaQ™ ECL Substrate Kit (Cat#716).

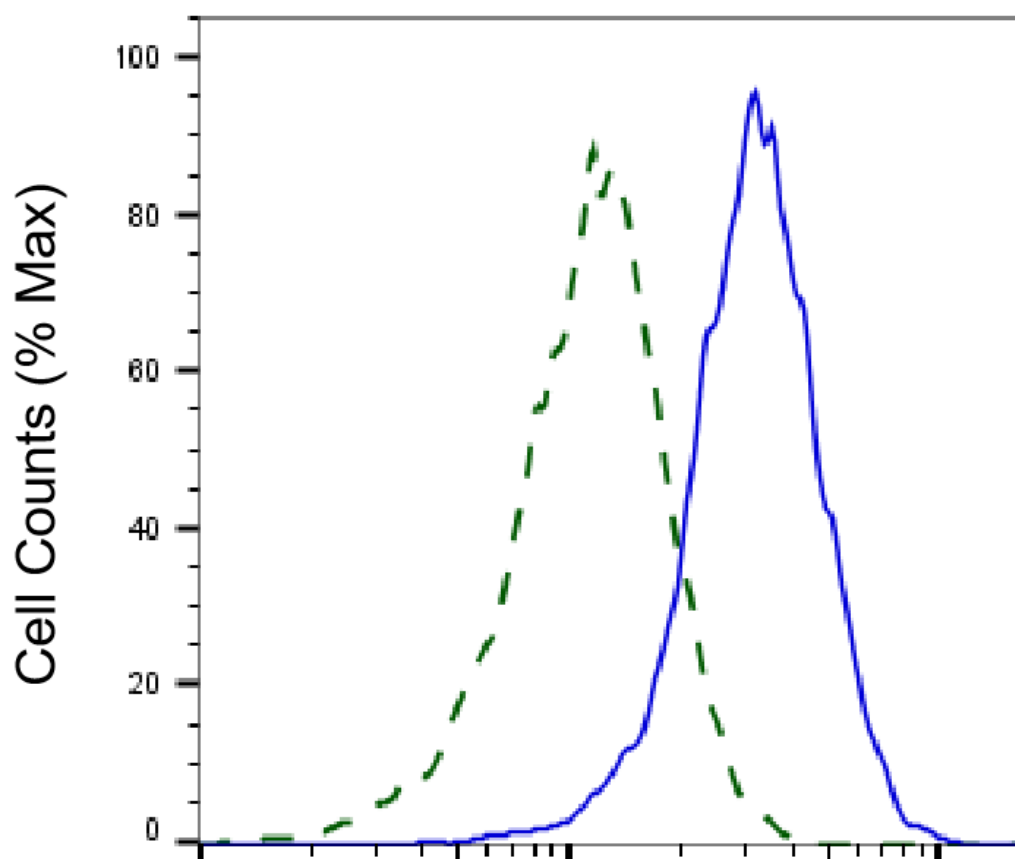
SUPPORT

SUPPORT@GENUINBIOTECH.COM
TEL: +1-540-855-7041

ORDERS

SALES@GENUINBIOTECH.COM
FAX: +1-540-855-7041

WWW.GENUINBIOTECH.COM



Copyright ©2025 Genuin Biotechnologies LLC

NIMA related kinase 9-Alexa Fluor® 647

Validation of NIMA related kinase 9 knockdown using flow cytometry. Wild-type(WT, Blue) and knockdown(KD, Green) HeLa cells were stained with anti-NIMA related kinase 9 antibody (Cat#63526, 1:2,000) and analyzed using BD flow cytometer.