

KD-Validated Anti-PFKP Mouse Monoclonal Antibody



Catalog #: 63531

Aliases

PFKP; Phosphofructokinase, Platelet; PFK-C; PFKF; ATP-Dependent 6-Phosphofructokinase, Platelet Type; Phosphofructo-1-Kinase Isozyme C; 6-Phosphofructokinase Type C; Phosphohexokinase; EC 2.7.1.11; ATP-PFK; PFK-P; 6-Phosphofructokinase, Platelet Type; Phosphofructokinase, Platelet Type; Phosphofructokinase 1; EC 2.7.1

Background

Gene Name: PFKP

NCBI Gene Entry: [5214](#)

UniProt Entry: [Q01813](#)

Application Information

Molecular Weight: Predicted, 86 kDa; observed, 75 kDa

Clonality: Mouse monoclonal antibody

Clone ID: 24GB6380

Species Reactivity: Human

Applications Tested: Western blotting (WB), flow cytometry (FCM), immunocytochemistry (IC)

Immunogen

Recombinant protein of human PFKP

Isotype

Mouse IgG1

Storage Buffer

Supplied in PBS (pH 7.4) containing 50% glycerol, and 0.02% sodium azide.

Storage

Store at -20 °C for one year.

Recommended Dilutions

Western Blotting (WB): 1:1,000-1:5,000

Flow Cytometry (FCM): 1:2,000

Immunocytochemistry (IC): 1:100-1:1,000

SUPPORT

SUPPORT@GENUINBIOTECH.COM
TEL: +1-540-855-7041

ORDERS

SALES@GENUINBIOTECH.COM
FAX: +1-540-855-7041

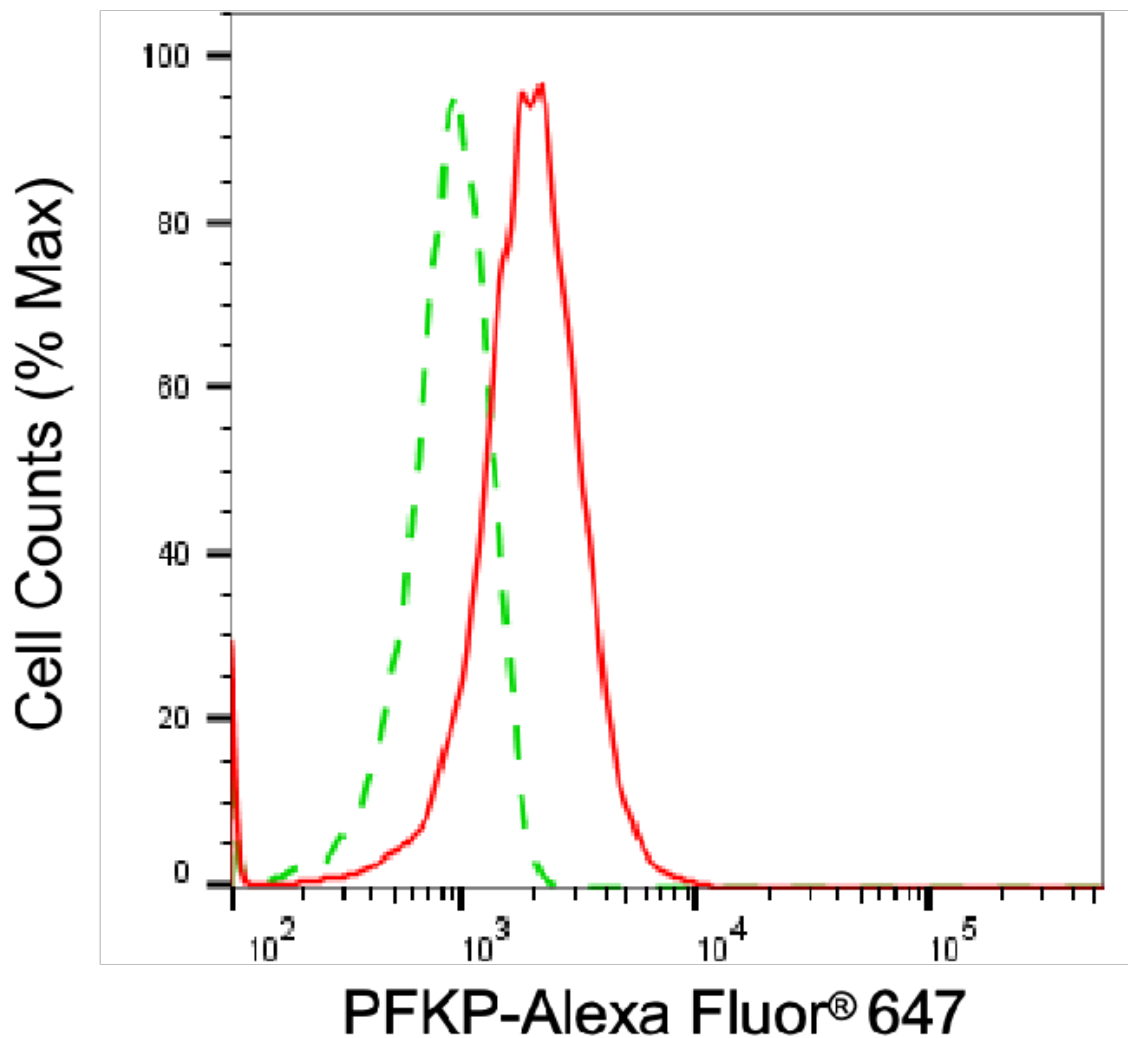
WWW.GENUINBIOTECH.COM

KD-Validated Anti-PFKP Mouse Monoclonal Antibody

PAGE 2

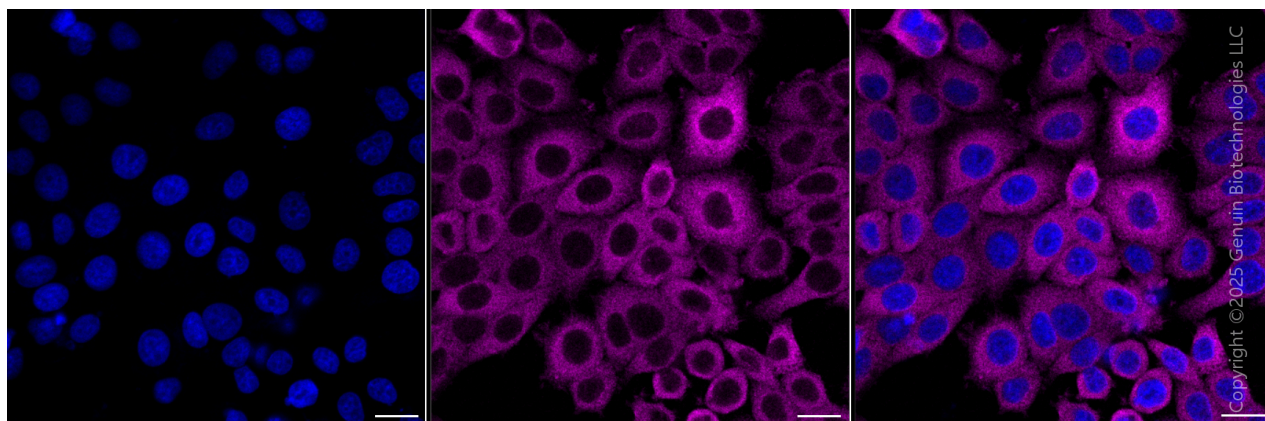
Note: This product is for research use only.

Validation Data



Copyright ©2025 Genuin Biotechnologies LLC

Flow cytometric analysis of PFKP expression in HepG2 cells using anti-PFKP antibody (Cat#63531, 1:2,000). Green, isotype control; red, PFKP.



SUPPORT

SUPPORT@GENUINBIOTECH.COM
TEL: +1-540-855-7041

ORDERS

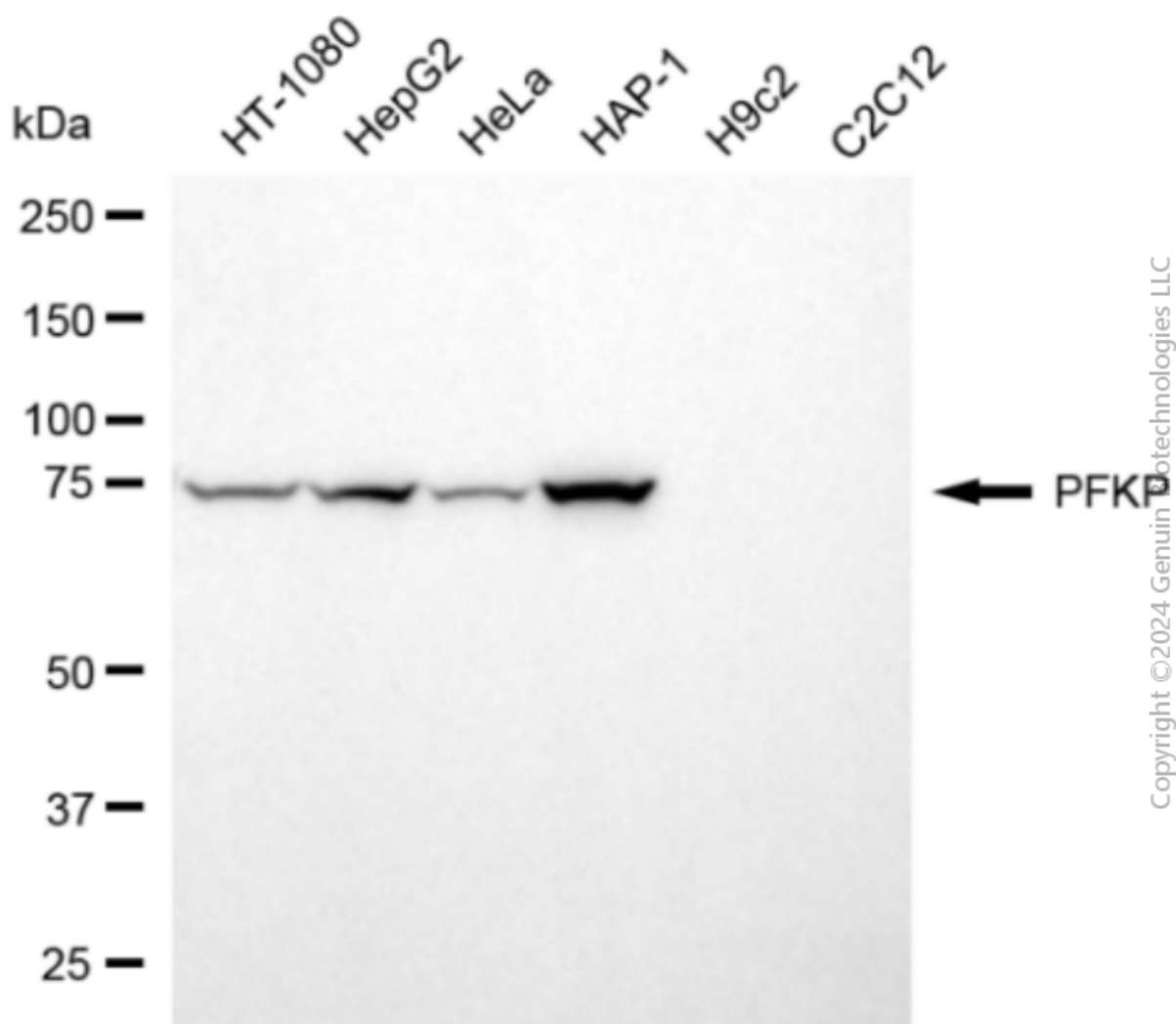
SALES@GENUINBIOTECH.COM
FAX: +1-540-855-7041

WWW.GENUINBIOTECH.COM

KD-Validated Anti-PFKP Mouse Monoclonal Antibody

PAGE 3

Immunocytochemical staining of HepG2 cells with anti-PFKP antibody (Cat#63531, 1:1,000). Nuclei were stained blue with DAPI; PFKP was stained magenta with Alexa Fluor® 647. Images were taken using Leica stellaris 5. Protein abundance based on laser Intensity and Smart Gain□ Medium. Scale bar, 20 μm.



Western blotting analysis using anti-PFKP antibody (Cat#63531). Total cell lysates (30 μg) from various cell lines were loaded and separated by SDS-PAGE. The blot was incubated with anti-PFKP antibody (Cat#63531, 1:5,000) and HRP-conjugated goat anti-mouse secondary antibody (Cat#101, 1:20,000) respectively. Image was developed using NaQ™ ECL Substrate Kit (Cat#716).

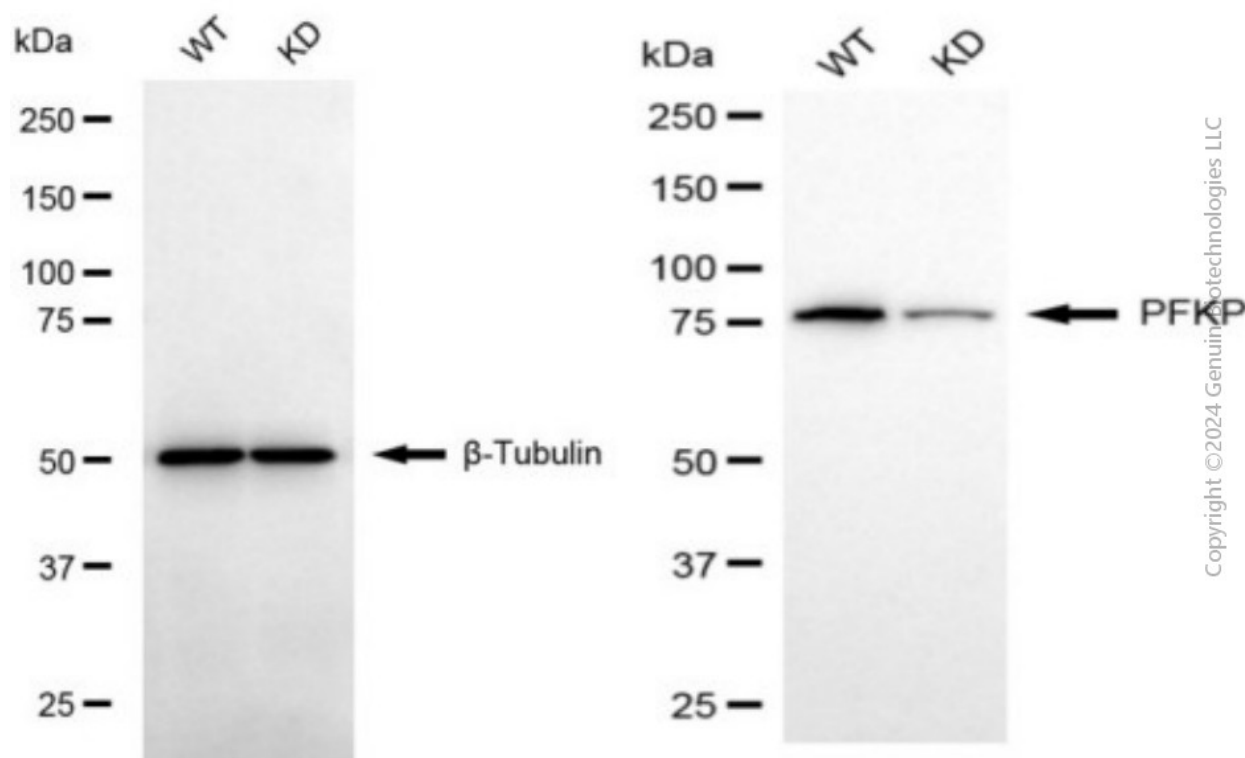
SUPPORT

SUPPORT@GENUINBIOTECH.COM
TEL: +1-540-855-7041

ORDERS

SALES@GENUINBIOTECH.COM
FAX: +1-540-855-7041

WWW.GENUINBIOTECH.COM



Western blotting analysis using anti-PFKP antibody (Cat#63531). PFKP expression in wild type (WT) and PFKP knockdown (KD) HSHC cells with 20 μ g of total cell lysates. β -Tubulin serves as a loading control. The blot was incubated with anti-PFKP antibody (Cat#63531, 1:5,000) and HRP-conjugated goat anti-mouse secondary antibody (Cat#101, 1:20,000) respectively. Image was developed using NaQ™ ECL Substrate Kit (Cat#716).