

# KD-Validated Anti-Diacylglycerol Kinase Alpha Mouse Monoclonal Antibody



**Catalog #: 63540**

## Aliases

DGKA; Diacylglycerol Kinase Alpha; DGK-Alpha; DAGK1; DAGK; Diacylglycerol Kinase, Alpha 80kDa; 80 KDa Diacylglycerol Kinase; Diglyceride Kinase Alpha; DAG Kinase Alpha; EC 2.7.1.107; Diacylglycerol Kinase, Alpha (80kD); EC 2.7.1.93

## Background

Gene Name: DGKA

NCBI Gene Entry: [1606](#)

UniProt Entry: [P23743](#)

## Application Information

Molecular Weight: Predicted, 83 kDa; observed, 74 kDa

Clonality: Mouse monoclonal antibody

Clone ID: 24GB6425

Species Reactivity: Human

Applications Tested: Western blotting (WB), flow cytometry (FCM)

## Immunogen

Recombinant protein of human DGKA

## Isotype

Mouse IgG2a

## Storage Buffer

Supplied in PBS (pH 7.4) containing 50% glycerol, and 0.02% sodium azide.

## Storage

Store at -20 °C for one year.

## Recommended Dilutions

Western Blotting (WB): 1:1,000-1:5,000

Flow Cytometry (FCM): 1:2,000

**Note:** This product is for research use only.

## Validation Data

---

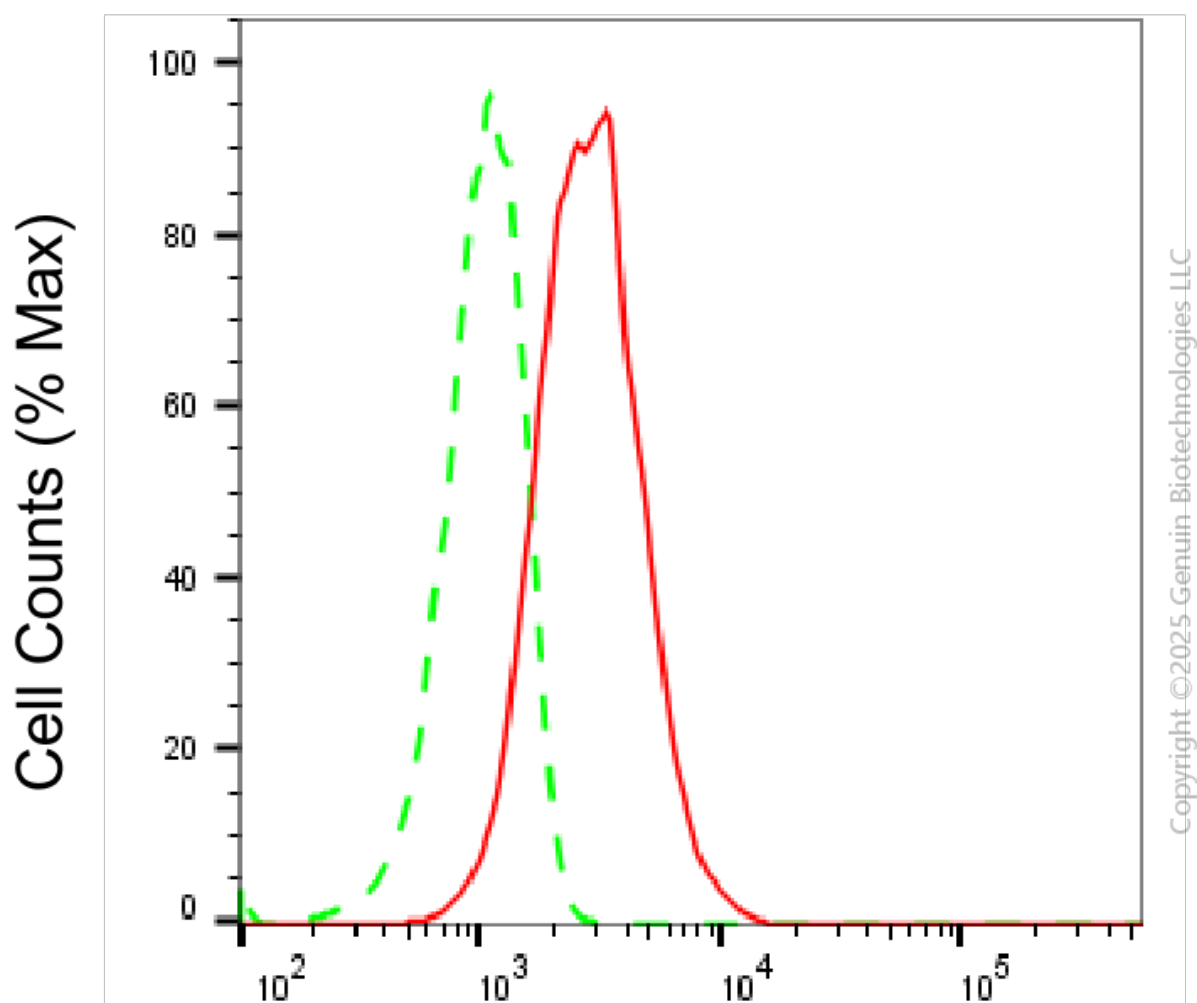
### SUPPORT

SUPPORT@GENUINBIOTECH.COM  
TEL: +1-540-855-7041

### ORDERS

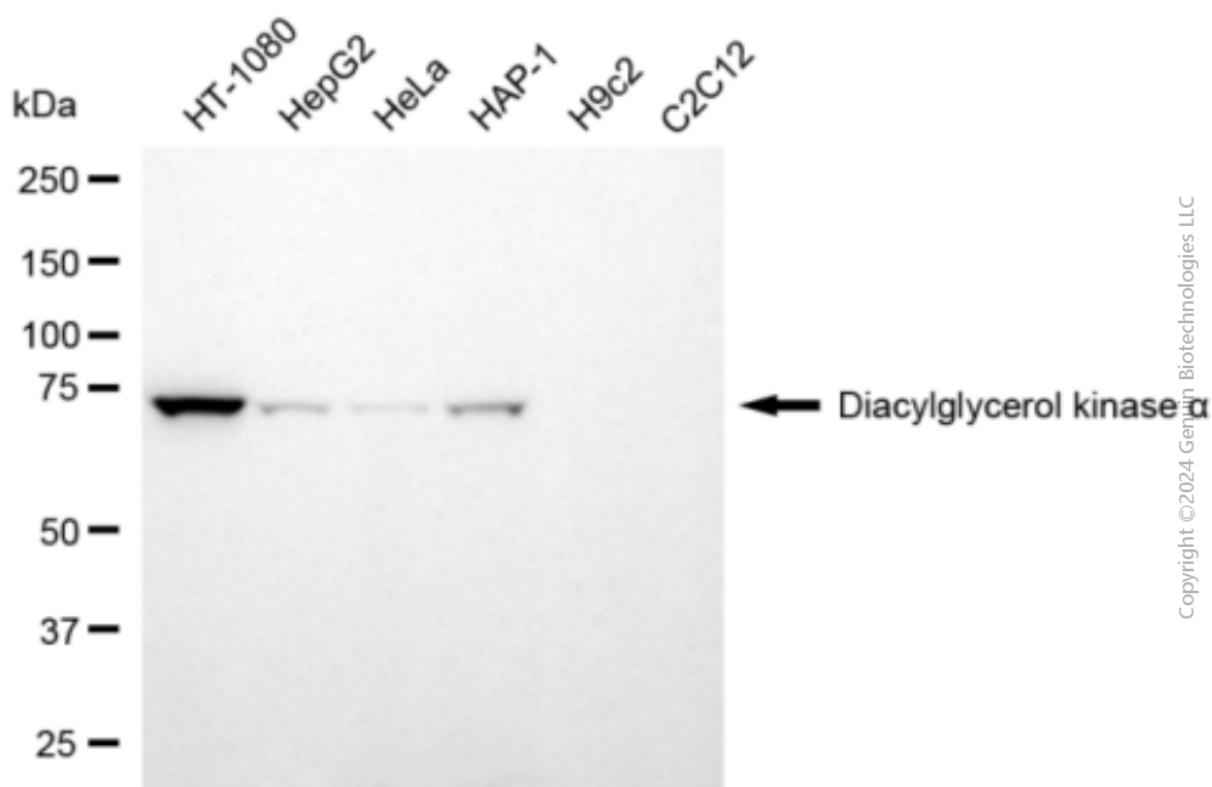
SALES@GENUINBIOTECH.COM  
FAX: +1-540-855-7041

[WWW.GENUINBIOTECH.COM](http://WWW.GENUINBIOTECH.COM)

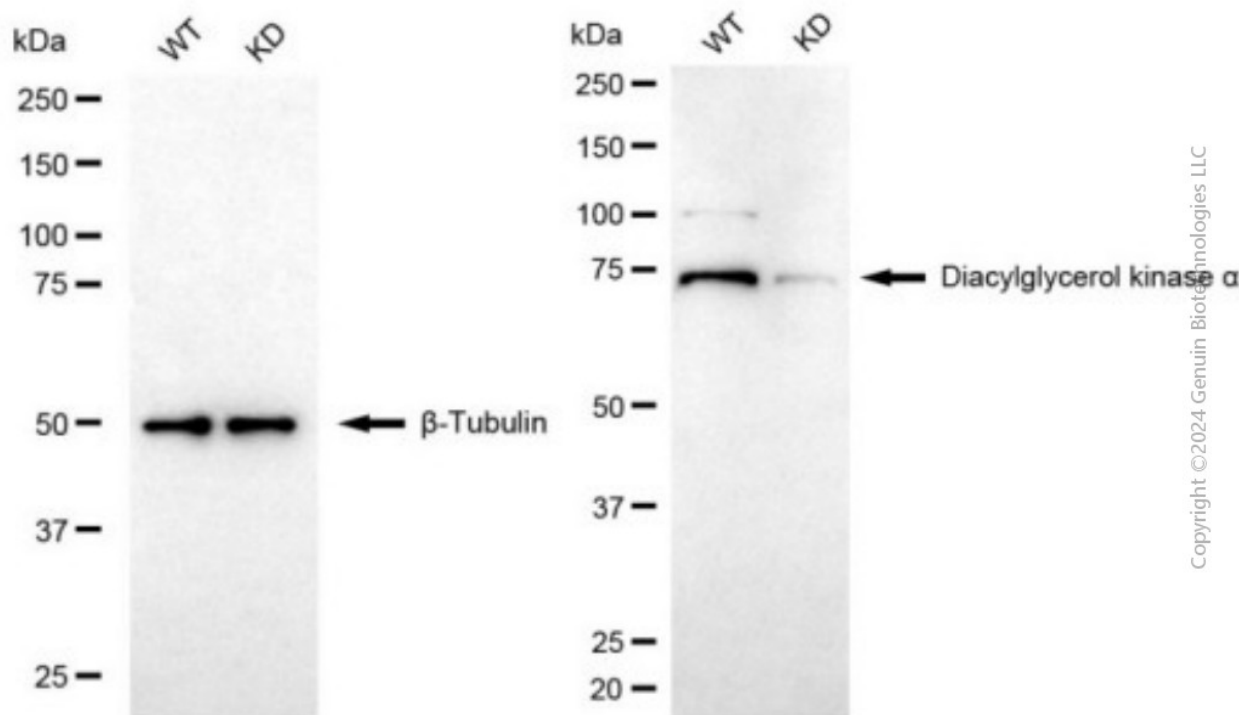


## Diacylglycerol kinase alpha-Alexa Fluor® 647

Flow cytometric analysis of Diacylglycerol kinase alpha expression in HT-1080 cells using anti-Diacylglycerol kinase alpha antibody (Cat#63540, 1:2,000). Green, isotype control; red, Diacylglycerol kinase alpha.



Western blotting analysis using anti-diacylglycerol kinase alpha antibody (Cat#63540). Total cell lysates (30 µg) from various cell lines were loaded and separated by SDS-PAGE. The blot was incubated with anti-diacylglycerol kinase alpha antibody (Cat#63540, 1:5,000) and HRP-conjugated goat anti-mouse secondary antibody (Cat#101, 1:20,000) respectively. Image was developed using NaQ™ ECL Substrate Kit (Cat#716).



Western blotting analysis using anti-diacylglycerol kinase alpha antibody (Cat#63540). Diacylglycerol kinase alpha expression in wild type (WT) and diacylglycerol kinase alpha (DGKA) knockdown (KD) HSHC cells with 20  $\mu$ g of total cell lysates.  $\beta$ -Tubulin serves as a loading control. The blot was incubated with anti-diacylglycerol kinase alpha antibody (Cat#63540, 1:5,000) and HRP-conjugated goat anti-mouse secondary antibody (Cat#101, 1:20,000) respectively. Image was developed using FeQ™ ECL Substrate Kit (Cat#226).