

KD-Validated Anti-Calpastatin Mouse Monoclonal Antibody



Catalog #: 63547

Aliases

CAST; Calpastatin; Sperm BS-17 Component; Calpain Inhibitor; MIR583HG; MIR583 Host Gene; NONHSAG041072.2; NONHSAG041079.2; NONHSAG041069.2; NONHSAG041075.2; NONHSAG041074.2; HSALNG0043632; HSALNG0148668; HSALNG0043636; HSALNG0043640; HSALNG0037602; HSALNG0043637; MIR583 Host; Lnc-CAST-10; Lnc-CAST-3; BS-17; PLACK

Background

Gene Name: CAST

NCBI Gene Entry: [831](#)

UniProt Entry: [P20810](#)

Application Information

Molecular Weight: Predicted, 77 kDa; observed, 120 kDa

Clonality: Mouse monoclonal antibody

Clone ID: 24GB6455

Species Reactivity: Human

Applications Tested: Western blotting (WB), flow cytometry (FCM)

Immunogen

Recombinant protein of human CAST

Isotype

Mouse IgG1

Storage Buffer

Supplied in PBS (pH 7.4) containing 50% glycerol, and 0.02% sodium azide.

Storage

Store at -20 °C for one year.

Recommended Dilutions

Western Blotting (WB): 1:1,000-1:5,000

Flow Cytometry (FCM): 1:2,000

SUPPORT

SUPPORT@GENUINBIOTECH.COM
TEL: +1-540-855-7041

ORDERS

SALES@GENUINBIOTECH.COM
FAX: +1-540-855-7041

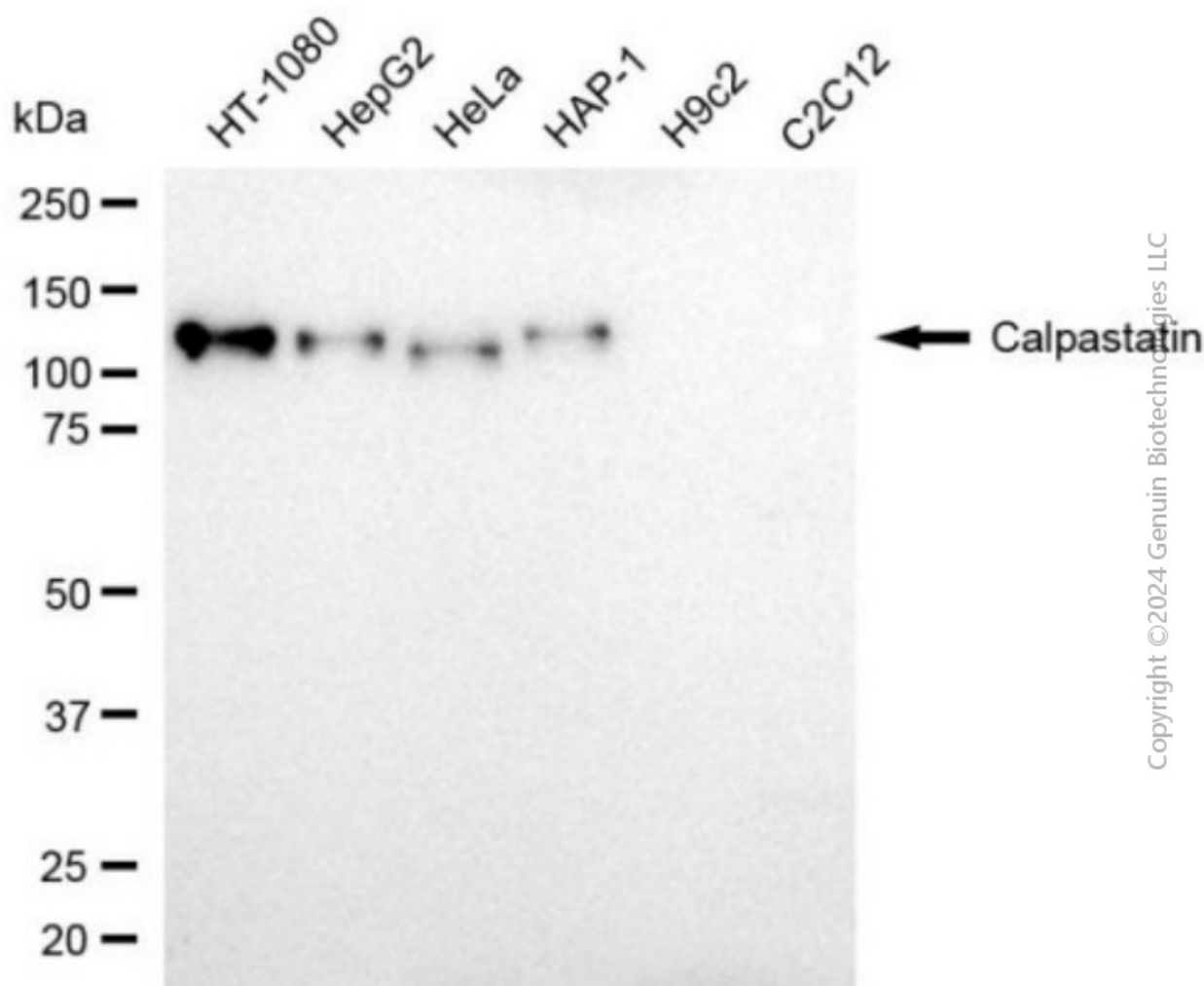
WWW.GENUINBIOTECH.COM

KD-Validated Anti-Calpastatin Mouse Monoclonal Antibody

PAGE 2

Note: This product is for research use only.

Validation Data



Western blotting analysis using anti-calpastatin antibody (Cat#63547). Total cell lysates (30 µg) from various cell lines were loaded and separated by SDS-PAGE. The blot was incubated with anti-calpastatin antibody (Cat#63547, 1:5,000) and HRP-conjugated goat anti-mouse secondary antibody (Cat#101, 1:20,000) respectively. Image was developed using FeQ™ ECL Substrate Kit (Cat#226).

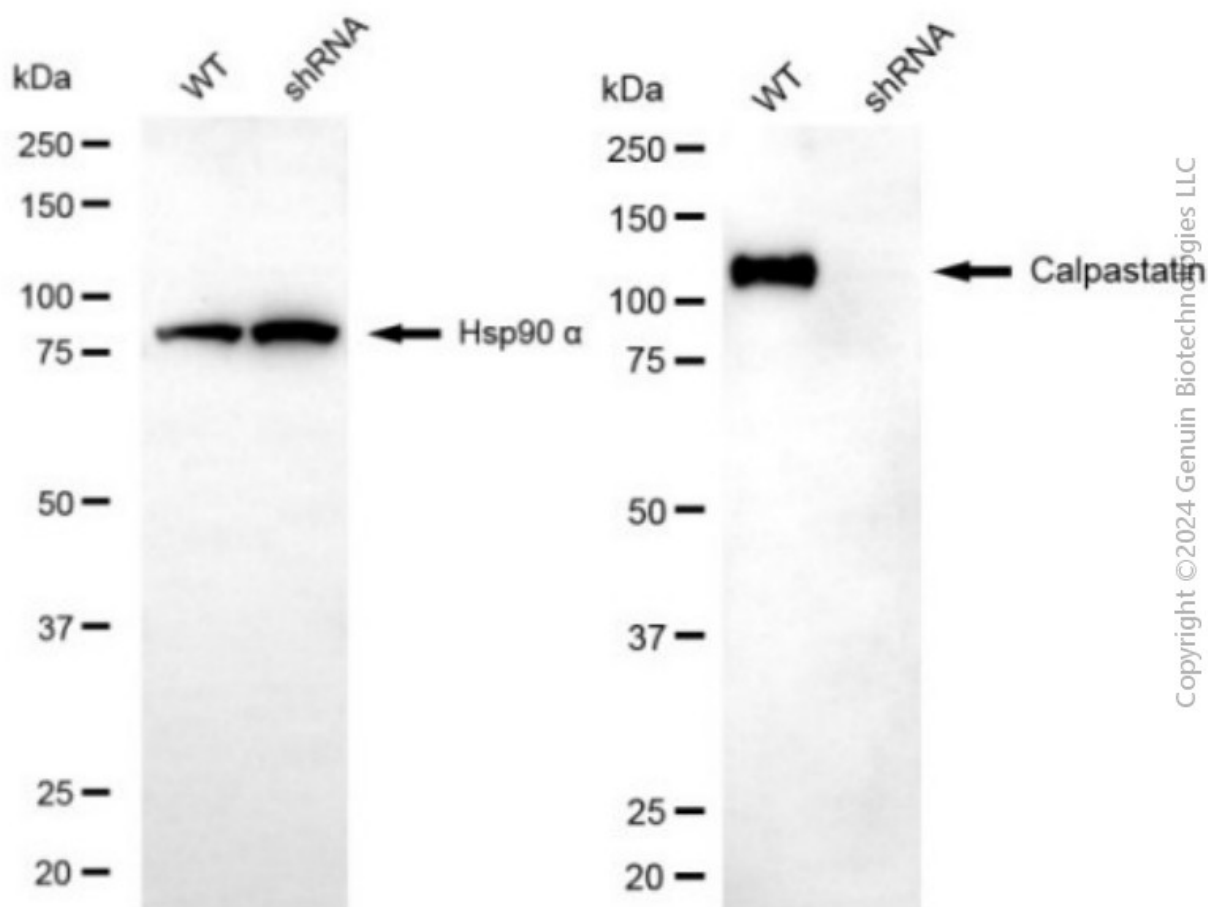
SUPPORT

SUPPORT@GENUINBIOTECH.COM
TEL: +1-540-855-7041

ORDERS

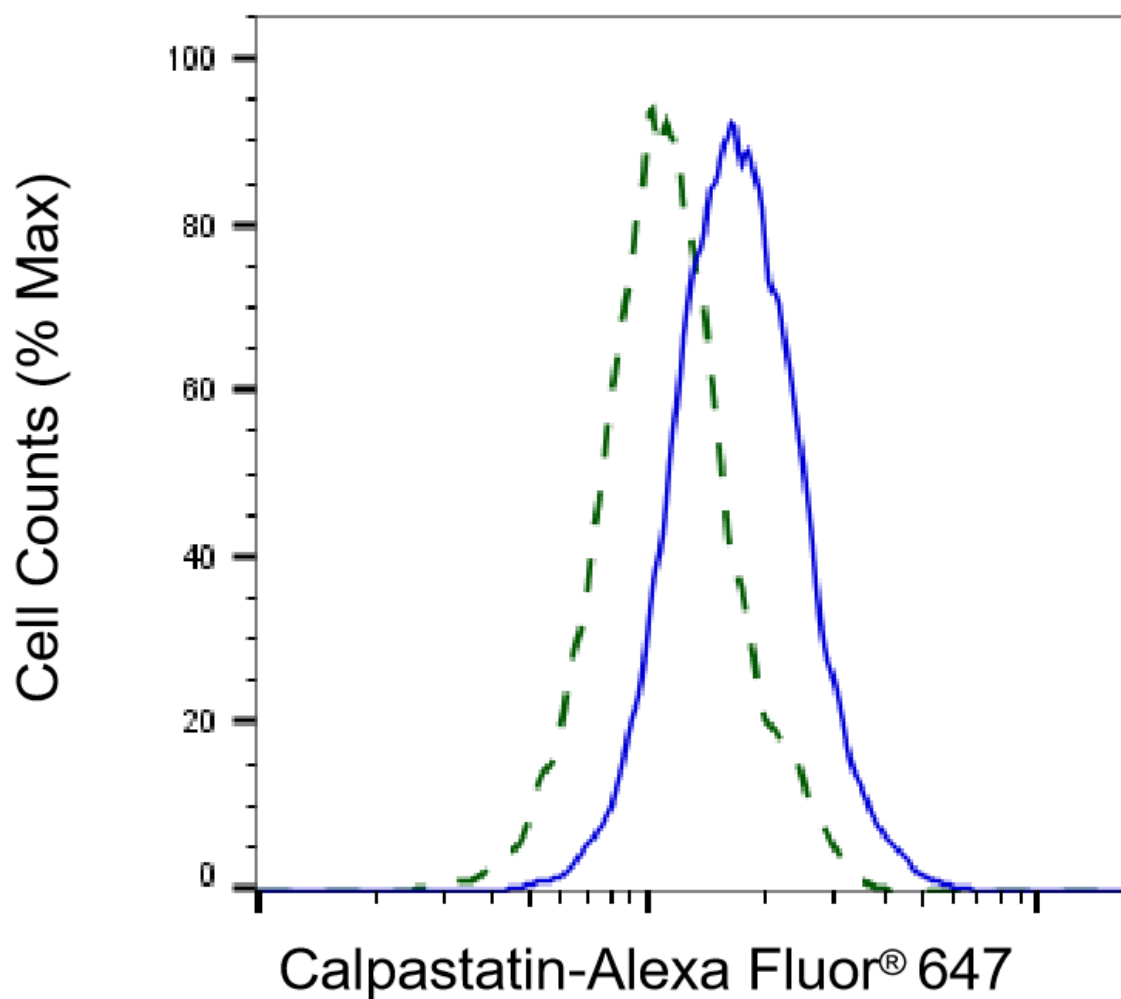
SALES@GENUINBIOTECH.COM
FAX: +1-540-855-7041

WWW.GENUINBIOTECH.COM



Copyright ©2024 Genuin Biotechnologies LLC

Western blotting analysis using anti-calpastatin antibody (Cat#63547). Calpastatin expression in wild type (WT) and calpastatin (CAST) shRNA knockdown (KD) HeLa cells with 20 µg of total cell lysates. Hsp90 α serves as a loading control. The blot was incubated with anti-calpastatin antibody (Cat#63547, 1:5,000) and HRP-conjugated goat anti-mouse secondary antibody (Cat#101, 1:20,000) respectively. Image was developed using FeQ™ ECL Substrate Kit (Cat#226).



Copyright ©2025 Genuin Biotechnologies LLC

Validation of Calpastatin knockdown using flow cytometry. Wild-type(WT, Blue) and knockdown(KD, Green) HeLa cells were stained with anti-Calpastatin antibody (Cat#63547, 1:2,000) and analyzed using BD flow cytometer.