

KD-Validated Anti-OTUB1 Mouse Monoclonal Antibody



Catalog #: 63553

Aliases

OTUB1; OTU Deubiquitinase, Ubiquitin Aldehyde Binding 1; OTU Domain-Containing Ubiquitin Aldehyde-Binding Protein 1; Ubiquitin-Specific-Processing Protease OTUB1; OTU Domain, Ubiquitin Aldehyde Binding 1; Deubiquitinating Enzyme OTUB1; Ubiquitin Thioesterase OTUB1; Otubain-1; FLJ20113; FLJ40710; OTB1; OTU1; Ubiquitin-Specific Protease Otubain 1; OTU-Domain Ubal-Binding 1; EC 3.4.19.12; EC 3.1.2; HSPC263; HOTU1

Background

Gene Name: OTUB1

NCBI Gene Entry: [55611](#)

UniProt Entry: [Q96FW1](#)

Application Information

Molecular Weight: Predicted, 31 kDa; observed, 35 kDa

Clonality: Mouse monoclonal antibody

Clone ID: 24GB6485

Species Reactivity: Human, mouse, rat

Applications Tested: Western blotting (WB), flow cytometry (FCM)

Immunogen

Recombinant protein of human OTUB1

Isotype

Mouse IgG2b

Storage Buffer

Supplied in PBS (pH 7.4) containing 50% glycerol, and 0.02% sodium azide.

Storage

Store at -20 °C for one year.

Recommended Dilutions

Western Blotting (WB): 1:1,000-1:5,000

Flow Cytometry (FCM): 1:2,000

SUPPORT

SUPPORT@GENUINBIOTECH.COM
TEL: +1-540-855-7041

ORDERS

SALES@GENUINBIOTECH.COM
FAX: +1-540-855-7041

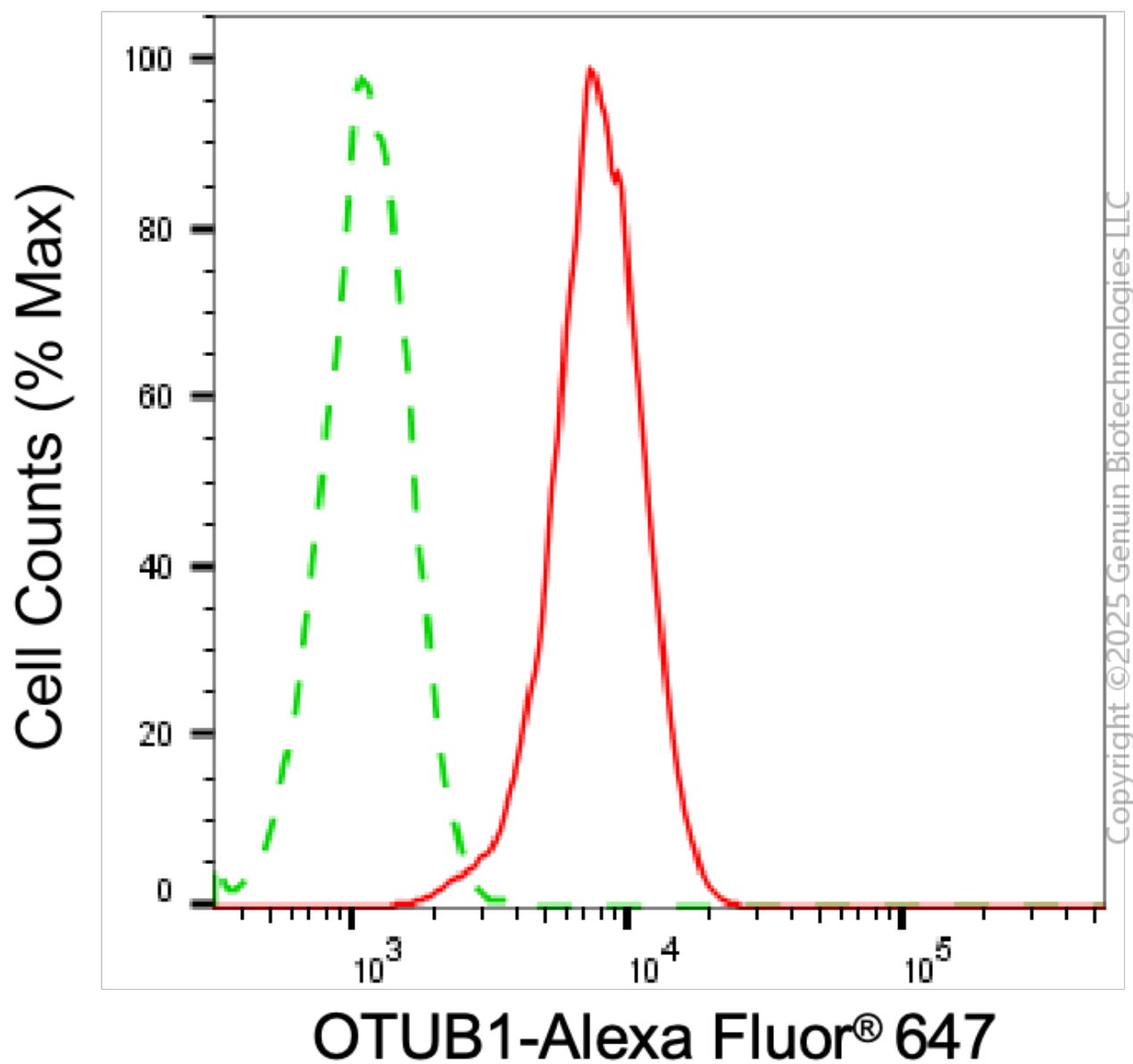
WWW.GENUINBIOTECH.COM

KD-Validated Anti-OTUB1 Mouse Monoclonal Antibody

PAGE 2

Note: This product is for research use only.

Validation Data



Flow cytometric analysis of OTUB1 expression in HeLa cells using anti-OTUB1 antibody (Cat#63553, 1:2,000). Green, isotype control; red, OTUB1.

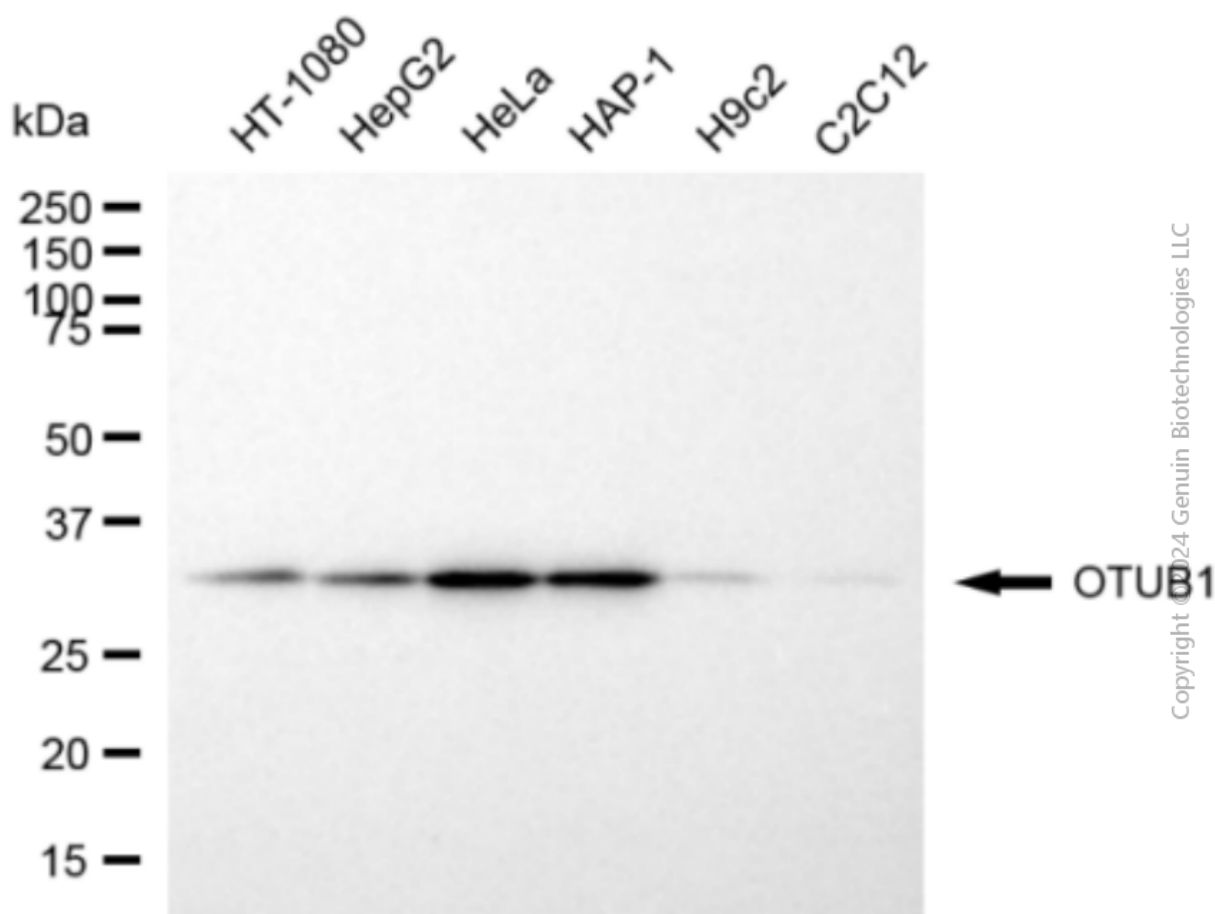
SUPPORT

SUPPORT@GENUINBIOTECH.COM
TEL: +1-540-855-7041

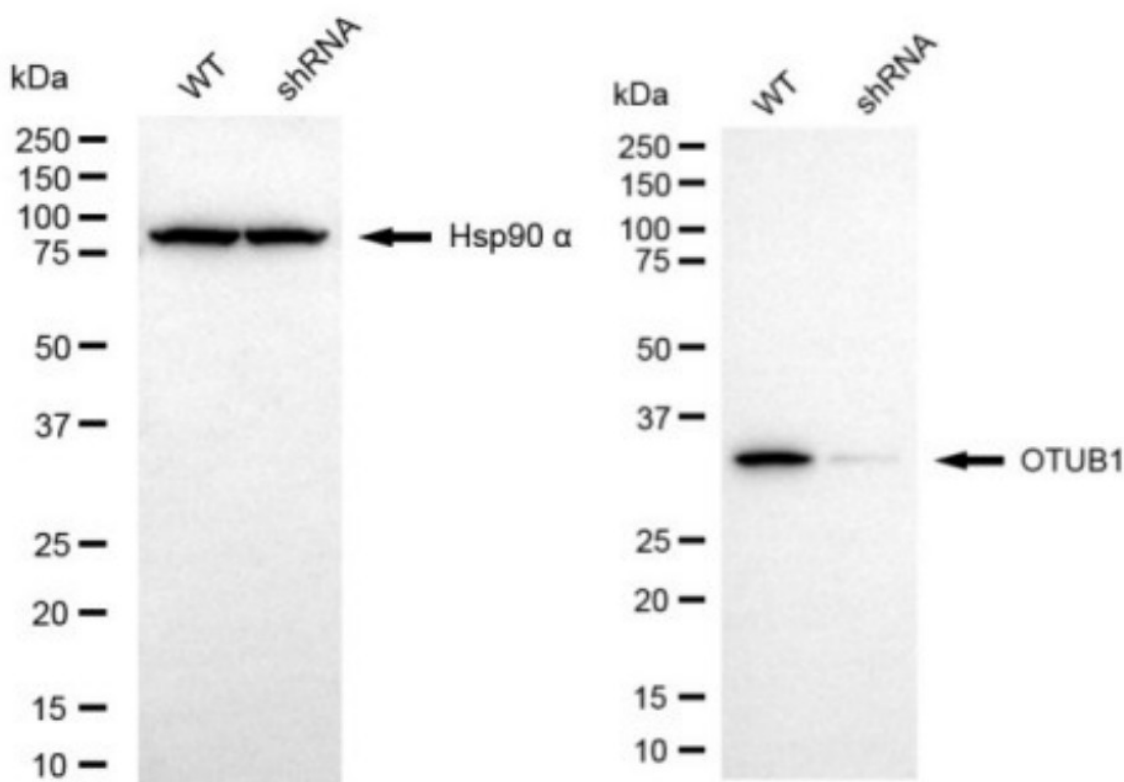
ORDERS

SALES@GENUINBIOTECH.COM
FAX: +1-540-855-7041

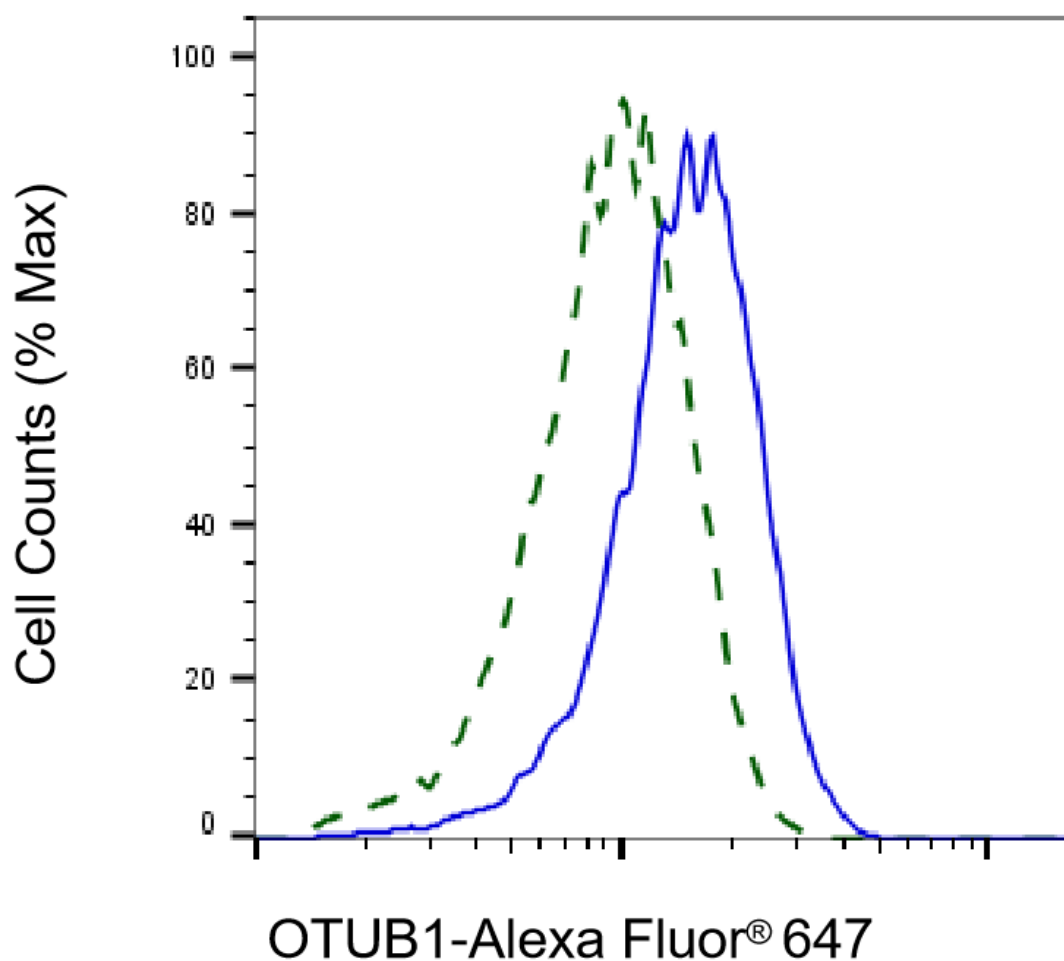
WWW.GENUINBIOTECH.COM



Western blotting analysis using anti-OTUB1 antibody (Cat#63553). Total cell lysates (30 μ g) from various cell lines were loaded and separated by SDS-PAGE. The blot was incubated with anti-OTUB1 antibody (Cat#63553, 1:5,000) and HRP-conjugated goat anti-mouse secondary antibody (Cat#101, 1:20,000) respectively. Image was developed using NaQ™ ECL Substrate Kit (Cat#716).



Western blotting analysis using anti-OTUB1 antibody (Cat#63553). OTUB1 expression in wild type (WT) and OTUB1 shRNA knockdown (KD) HeLa cells with 20 μ g of total cell lysates. Hsp90 α serves as a loading control. The blot was incubated with anti-OTUB1 antibody (Cat#63553, 1:5,000) and HRP-conjugated goat anti-mouse secondary antibody (Cat#101, 1:20,000) respectively. Image was developed using NaQ™ ECL Substrate Kit (Cat#716).



Copyright ©2025 Genuin Biotechnologies LLC

Validation of OTUB1 knockdown using flow cytometry. Wild-type(WT, Blue) and knockdown(KD, Green) HeLa cells were stained with anti-OTUB1 antibody (Cat#63553, 1:2,000) and analyzed using BD flow cytometer.