

# KD-Validated Anti-Chromogranin A Mouse Monoclonal Antibody



**Catalog #: 63560**

## Aliases

CHGA; Chromogranin A; PHE5; PHES; Parathyroid Secretory Protein 1; Pituitary Secretory Protein I; Chromogranin-A; SP-I; Betagranin (N-Terminal Fragment Of Chromogranin A); Pancreastatin; Chromofungin; Vasostatin; Parastatin; Catestatin; CGA; CgA

## Background

Gene Name: CHGA

NCBI Gene Entry: [1113](#)

UniProt Entry: [P10645](#)

## Application Information

Molecular Weight: Predicted, 51 kDa; observed, 48 kDa

Clonality: Mouse monoclonal antibody

Clone ID: 24GB6520

Species Reactivity: Human

Applications Tested: Western blotting (WB), immunocytochemistry (IC)

## Immunogen

Recombinant protein of human CHGA

## Isotype

Mouse IgG1

## Storage Buffer

Supplied in PBS (pH 7.4) containing 50% glycerol, and 0.02% sodium azide.

## Storage

Store at -20 °C for one year.

## Recommended Dilutions

Western Blotting (WB): 1:1,000-1:5,000

Immunocytochemistry (IC): 1:100-1:1,000

**Note:** This product is for research use only.

## Validation Data

---

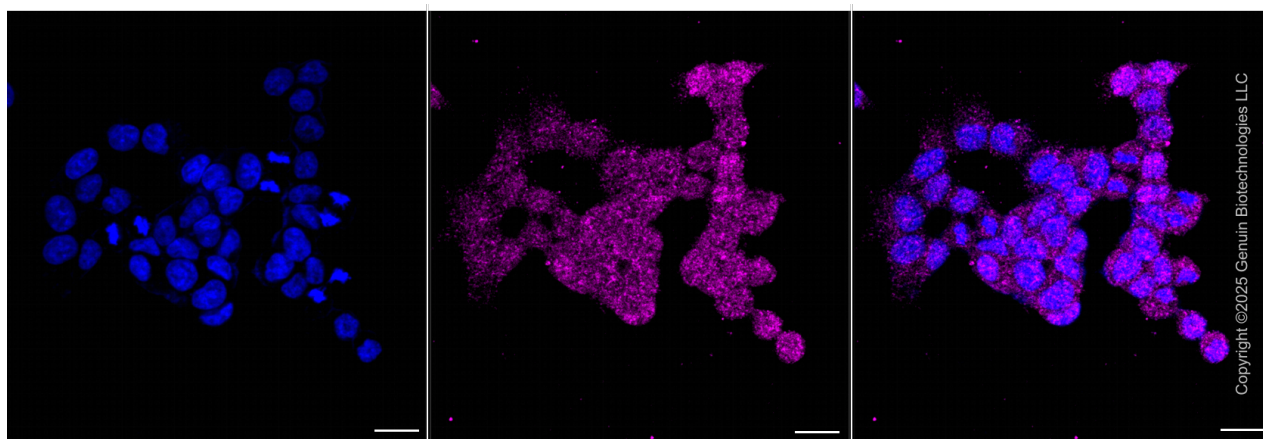
### SUPPORT

SUPPORT@GENUINBIOTECH.COM  
TEL: +1-540-855-7041

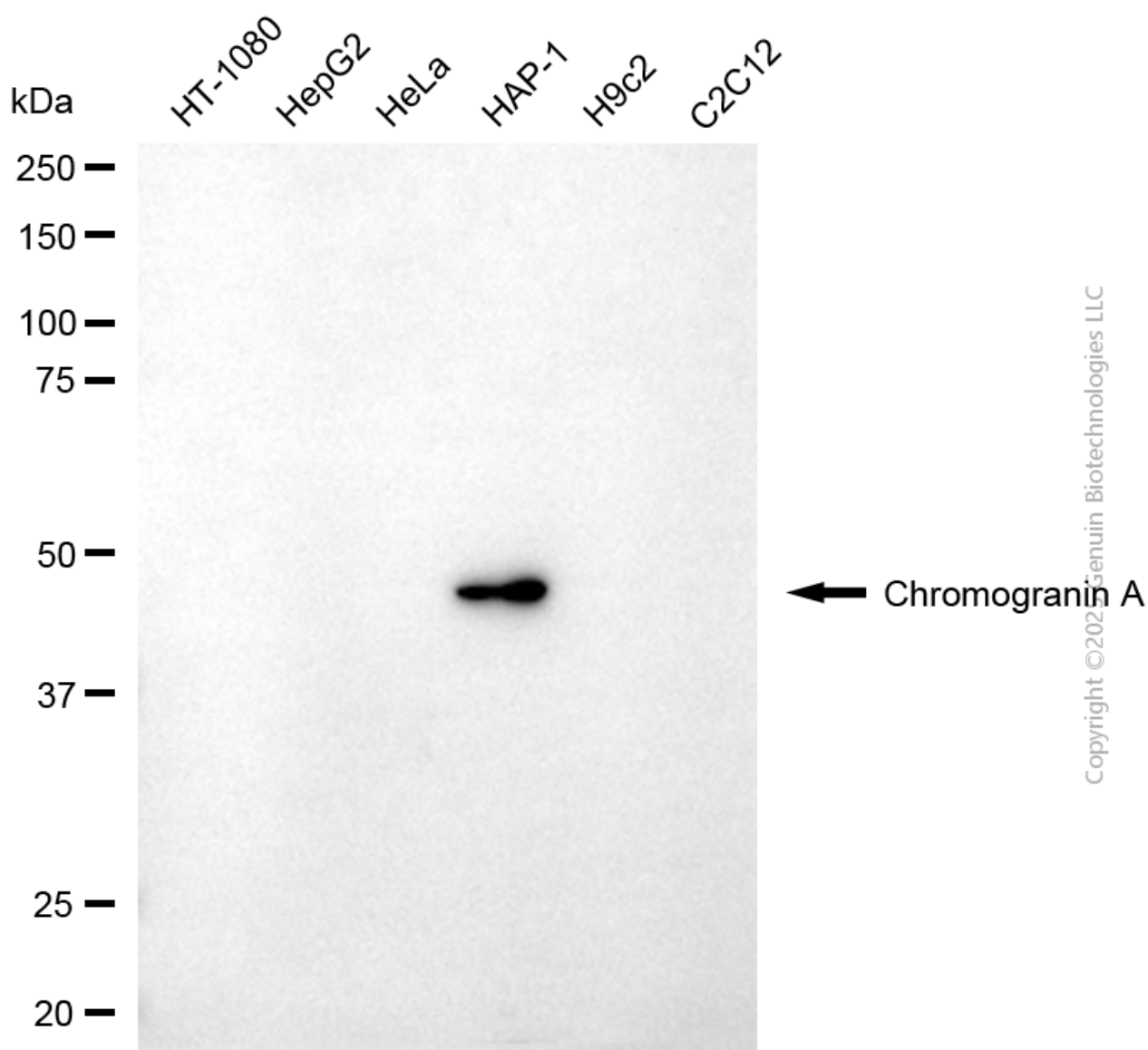
### ORDERS

SALES@GENUINBIOTECH.COM  
FAX: +1-540-855-7041

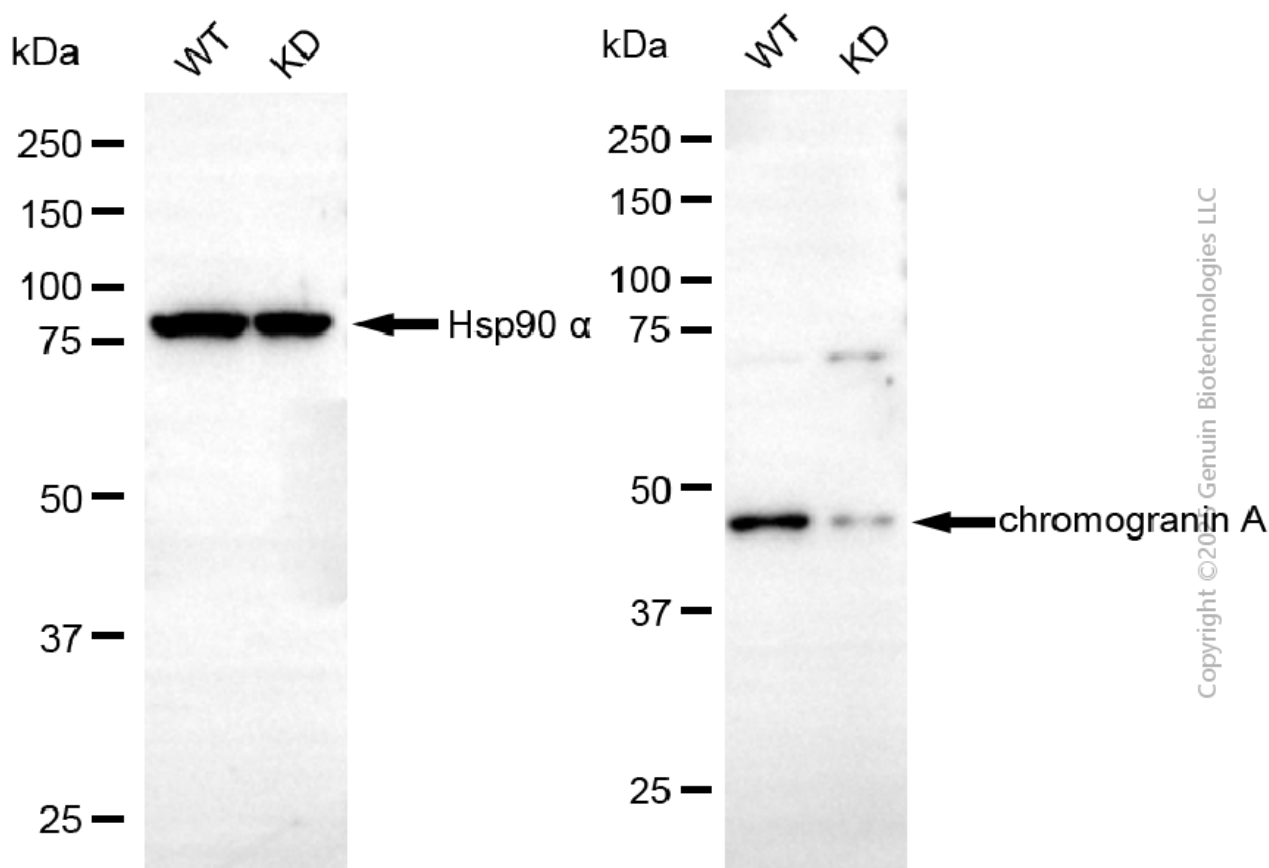
[WWW.GENUINBIOTECH.COM](http://WWW.GENUINBIOTECH.COM)



Immunocytochemical staining of HAP-1 cells with Chromogranin A antibody (Cat#63560, 1:1,000) . Nuclei were stained blue with DAPI; Chromogranin A was stained magenta with Alexa Fluor® 647. Images were taken using Leica stellaris 5. Protein abundance based on laser Intensity and smart gain: Medium. Scale bar, 20  $\mu$ m.



Western blotting analysis using anti-chromogranin A antibody (Cat#63560). Total cell lysates (30  $\mu$ g) from various cell lines were loaded and separated by SDS-PAGE. The blot was incubated with anti-chromogranin A antibody (Cat#63560, 1:5,000) and HRP-conjugated goat anti-mouse secondary antibody (Cat#101, 1:20,000) respectively. Image was developed using FeQ™ ECL Substrate Kit (Cat#226).



Western blotting analysis using anti-chromogranin A antibody (Cat#63560). Chromogranin A expression in wild type (WT) and chromogranin A (CHGA) knockdown (KD) HSHC cells with 20 µg of total cell lysates. Hsp90 α serves as a loading control. The blot was incubated with anti-chromogranin A antibody (Cat#63560, 1:5,000) and HRP-conjugated goat anti-mouse secondary antibody (Cat#101, 1:20,000) respectively. Image was developed using FeQ™ ECL Substrate Kit (Cat#226).