

KD-Validated Anti-SERPINB1 Mouse Monoclonal Antibody



Catalog #: 63564

Aliases

SERPINB1; Serpin Family B Member 1; MNEI; PI2; LEI; EI; Leukocyte Elastase Inhibitor; ELANH2; Serine (Or Cysteine) Proteinase Inhibitor, Clade B (Ovalbumin), Member 1; Serpin Peptidase Inhibitor, Clade B (Ovalbumin), Member 1; Monocyte/Neutrophil Elastase Inhibitor; Peptidase Inhibitor; M/NEI; PI-2; Protease Inhibitor 2 (Anti-Elastase), Monocyte/Neutrophil Derived; Epididymis Secretory Protein Li 27; Epididymis Luminal Protein 57; Anti-Elastase; Serpin B1; HEL-S-27; HEL57

Background

Gene Name: SERPINB1

NCBI Gene Entry: [1992](#)

UniProt Entry: [P30740](#)

Application Information

Molecular Weight: Predicted, 43 kDa; observed, 43 kDa

Clonality: Mouse monoclonal antibody

Clone ID: 24GB6540

Species Reactivity: Human

Applications Tested: Western blotting (WB), flow cytometry (FCM)

Immunogen

Recombinant protein of human SERPINB1

Isotype

Mouse IgG2b

Storage Buffer

Supplied in PBS (pH 7.4) containing 50% glycerol, and 0.02% sodium azide.

Storage

Store at -20 °C for one year.

Recommended Dilutions

Western Blotting (WB): 1:1,000-1:5,000

Flow Cytometry (FCM): 1:2,000

SUPPORT

SUPPORT@GENUINBIOTECH.COM
TEL: +1-540-855-7041

ORDERS

SALES@GENUINBIOTECH.COM
FAX: +1-540-855-7041

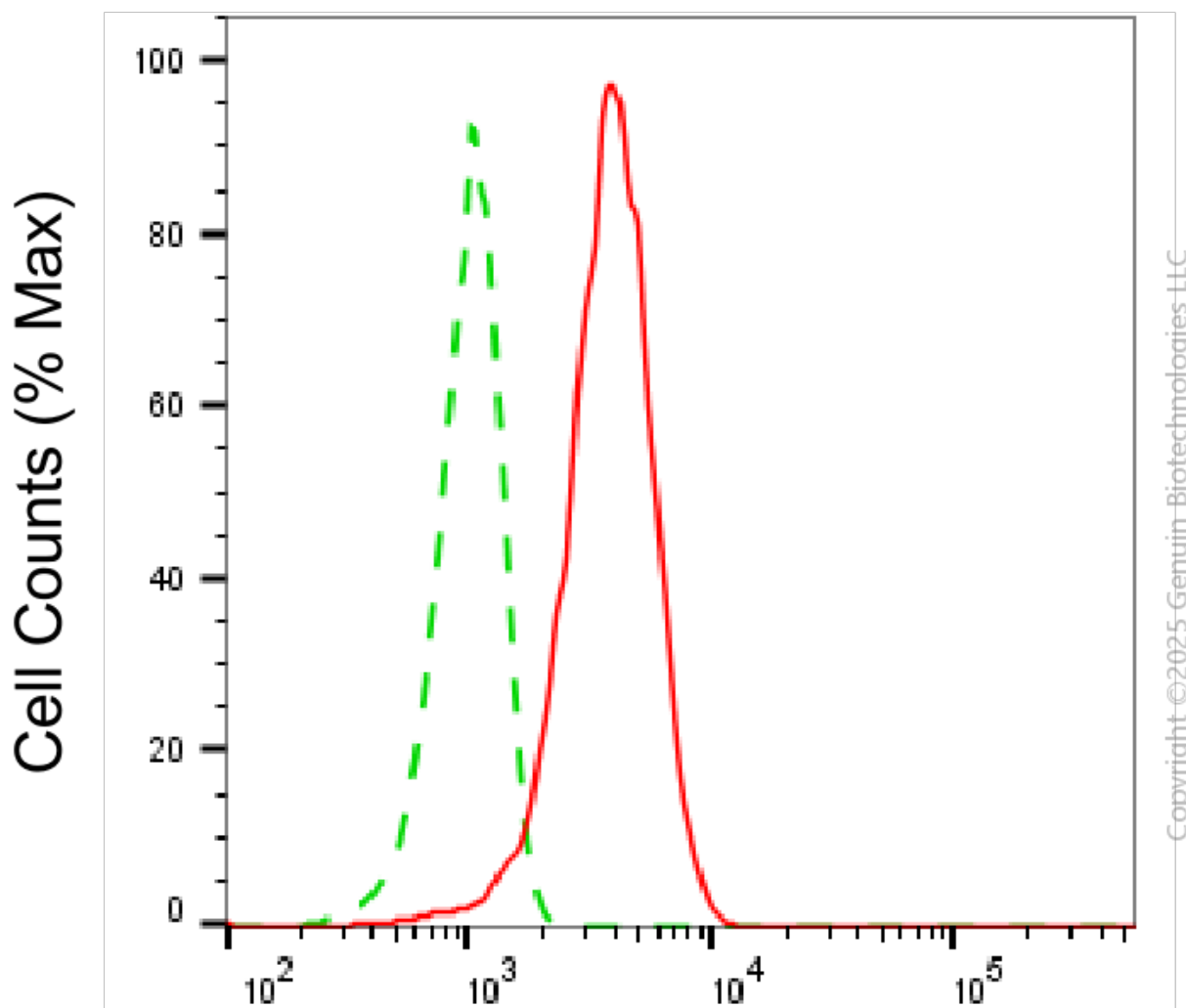
WWW.GENUINBIOTECH.COM

KD-Validated Anti-SERPINB1 Mouse Monoclonal Antibody

PAGE 2

Note: This product is for research use only.

Validation Data



Serpin family B member 1-Alexa Fluor® 647

Flow cytometric analysis of Serpin family B member 1 expression in HepG2 cells using anti-Serpin family B member 1 antibody (Cat#63564, 1:2,000). Green, isotype control; red, Serpin family B member 1.

SUPPORT

SUPPORT@GENUINBIOTECH.COM
TEL: +1-540-855-7041

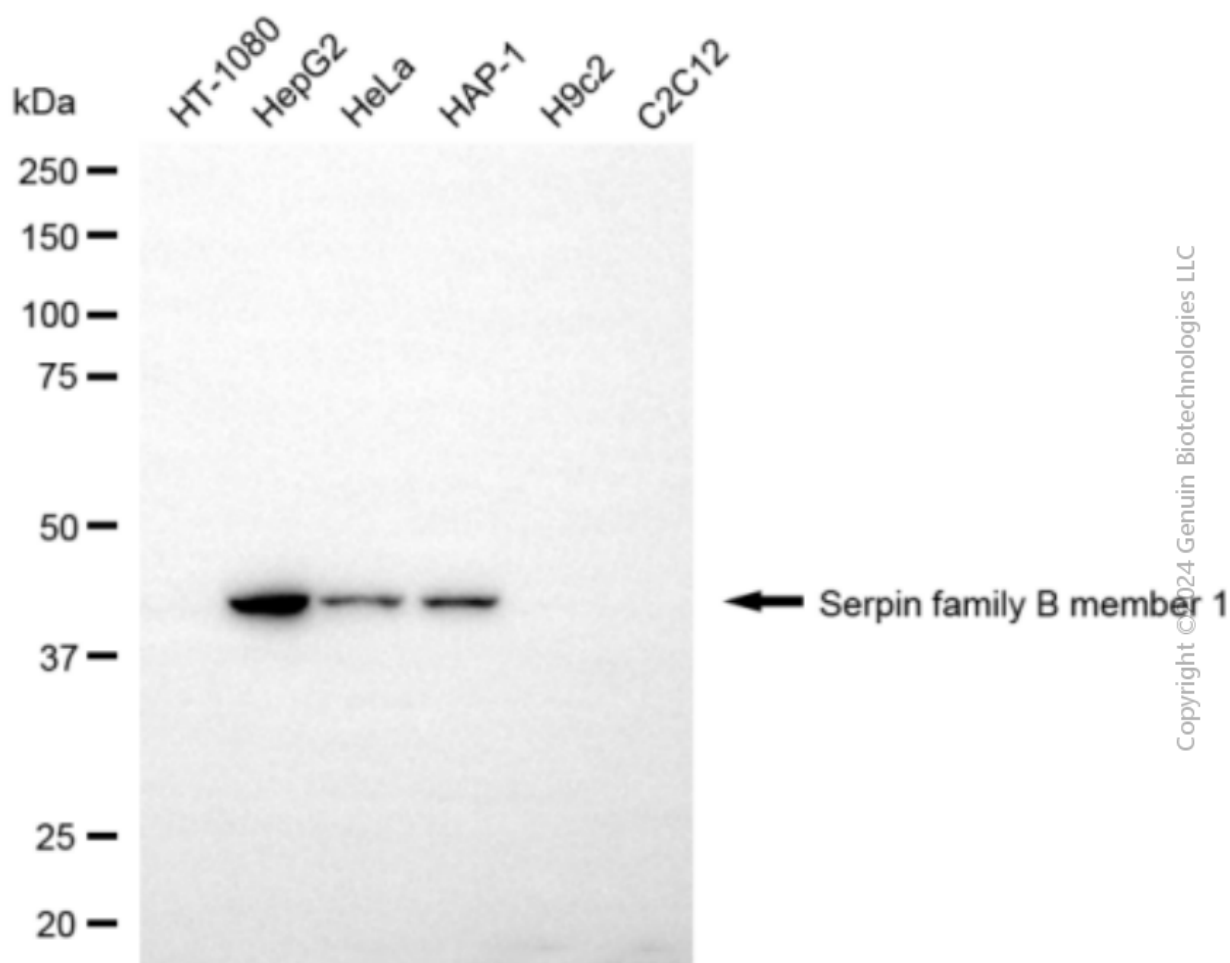
ORDERS

SALES@GENUINBIOTECH.COM
FAX: +1-540-855-7041

WWW.GENUINBIOTECH.COM

KD-Validated Anti-SERPINB1 Mouse Monoclonal Antibody

PAGE 3



Western blotting analysis using anti-serpin family B member 1 antibody (Cat#63564). Total cell lysates (30 μ g) from various cell lines were loaded and separated by SDS-PAGE. The blot was incubated with anti-serpin family B member 1 antibody (Cat#63564, 1:5,000) and HRP-conjugated goat anti-mouse secondary antibody (Cat#101, 1:20,000) respectively. Image was developed using NaQTM ECL Substrate Kit (Cat#716).

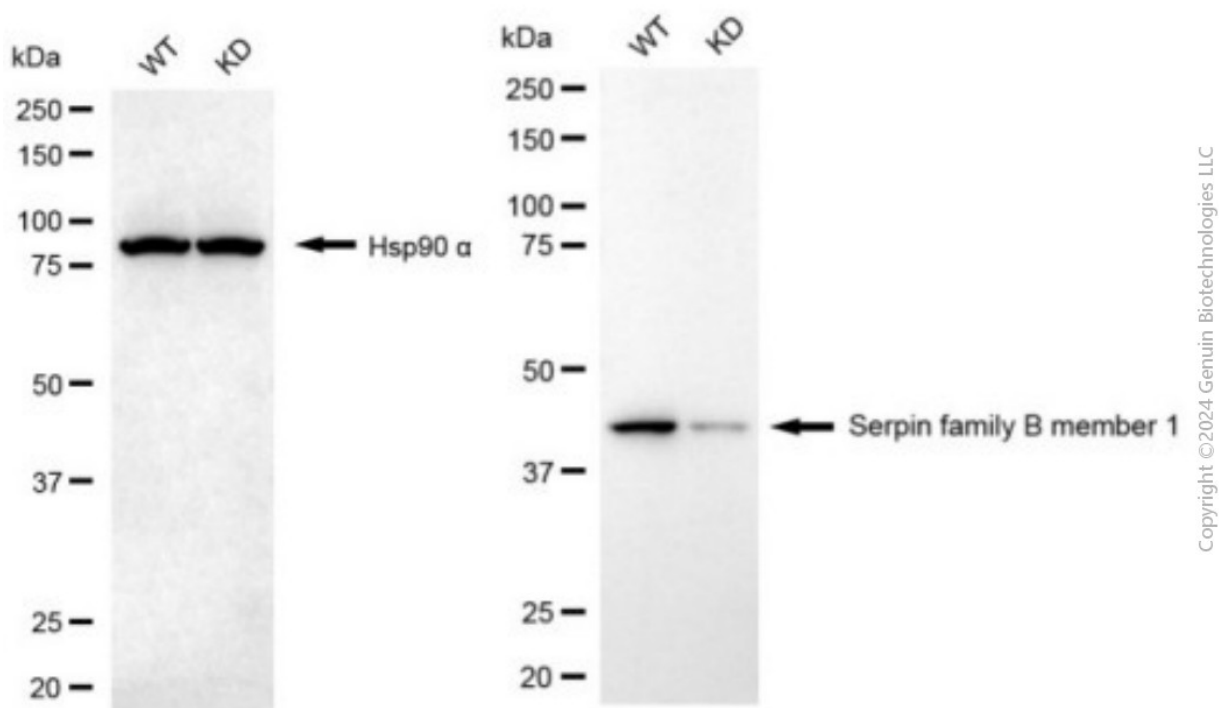
SUPPORT

SUPPORT@GENUINBIOTECH.COM
TEL: +1-540-855-7041

ORDERS

SALES@GENUINBIOTECH.COM
FAX: +1-540-855-7041

WWW.GENUINBIOTECH.COM



Western blotting analysis using anti-serpin family B member 1 antibody (Cat#63564). Serpin family B member 1 expression in wild type (WT) and serpin family B member 1 (SERPINB1) knockdown (KD) HSHC cells with 20 µg of total cell lysates. Hsp90 α serves as a loading control. The blot was incubated with anti-serpin family B member 1 antibody (Cat#63564, 1:5,000) and HRP-conjugated goat anti-mouse secondary antibody (Cat#101, 1:20,000) respectively. Image was developed using FeQ™ ECL Substrate Kit (Cat#226).