

# KD-Validated Anti-SERPINB1 Mouse Monoclonal Antibody



**Catalog #: 63565**

## Aliases

SERPINB1; Serpin Family B Member 1; MNEI; PI2; LEI; EI; Leukocyte Elastase Inhibitor; ELANH2; Serine (Or Cysteine) Proteinase Inhibitor, Clade B (Ovalbumin), Member 1; Serpin Peptidase Inhibitor, Clade B (Ovalbumin), Member 1; Monocyte/Neutrophil Elastase Inhibitor; Peptidase Inhibitor; M/NEI; PI-2; Protease Inhibitor 2 (Anti-Elastase), Monocyte/Neutrophil Derived; Epididymis Secretory Protein Li 27; Epididymis Luminal Protein 57; Anti-Elastase; Serpin B1; HEL-S-27; HEL57

## Background

Gene Name: SERPINB1

NCBI Gene Entry: [1992](#)

UniProt Entry: [P30740](#)

## Application Information

Molecular Weight: Predicted, 43 kDa; observed, 40 kDa

Clonality: Mouse monoclonal antibody

Clone ID: 24GB6545

Species Reactivity: Human

Applications Tested: Western blotting (WB), flow cytometry (FCM), immunocytochemistry (IC)

## Immunogen

Recombinant protein of human SERPINB1

## Isotype

Mouse IgG1

## Storage Buffer

Supplied in PBS (pH 7.4) containing 50% glycerol, and 0.02% sodium azide.

## Storage

Store at -20 °C for one year.

## Recommended Dilutions

Western Blotting (WB): 1:1,000-1:5,000

Flow Cytometry (FCM): 1:2,000

Immunocytochemistry (IC): 1:100-1:1,000

---

### SUPPORT

SUPPORT@GENUINBIOTECH.COM  
TEL: +1-540-855-7041

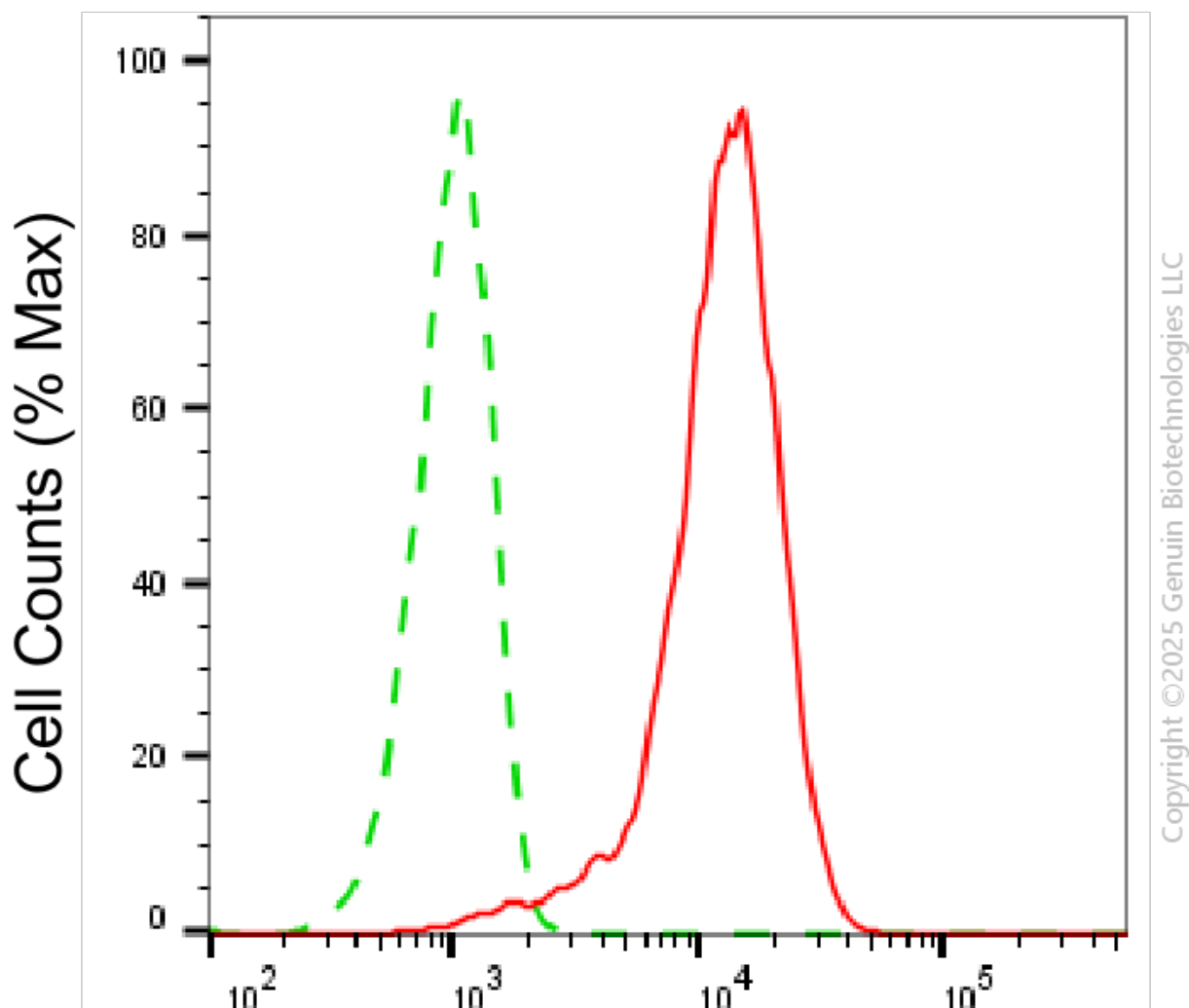
### ORDERS

SALES@GENUINBIOTECH.COM  
FAX: +1-540-855-7041

[WWW.GENUINBIOTECH.COM](http://WWW.GENUINBIOTECH.COM)

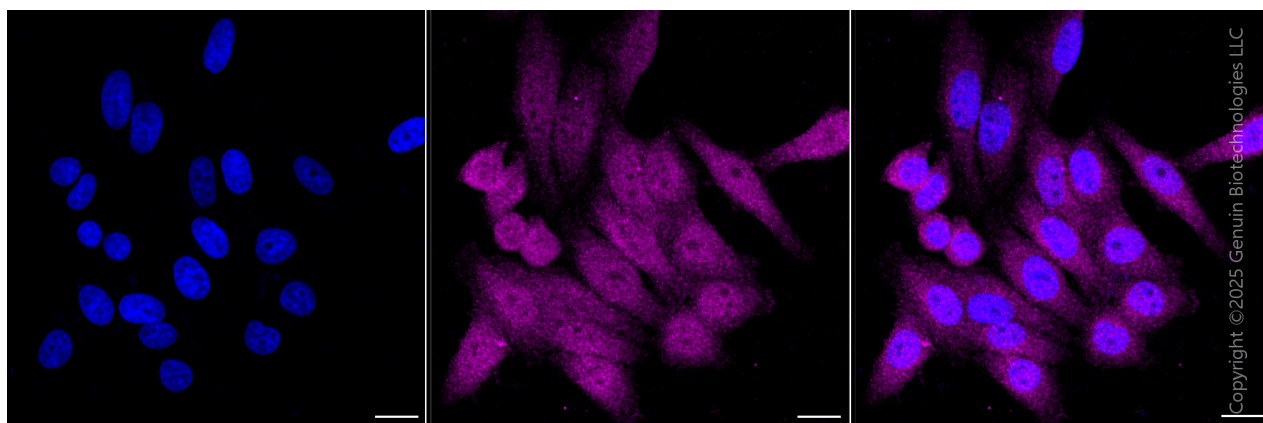
**Note:** This product is for research use only.

## Validation Data

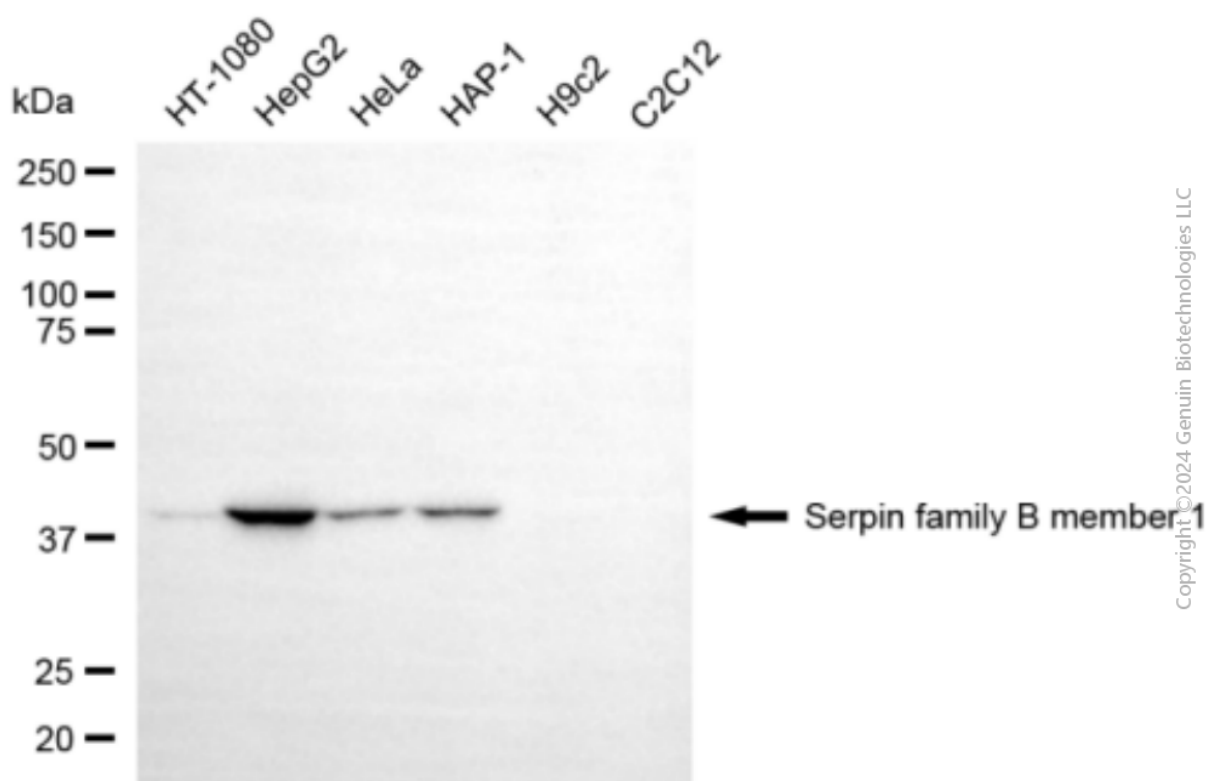


## Serpin family B member 1-Alexa Fluor® 647

Flow cytometric analysis of Serpin family B member 1 expression in HepG2 cells using anti-Serpin family B member 1 antibody (Cat#63565, 1:2,000). Green, isotype control; red, Serpin family B member 1.



Immunocytochemical staining of HepG2 cells with anti-Serpin family B member 1 antibody (Cat#63565, 1:1,000). Nuclei were stained blue with DAPI; Serpin family B member 1 was stained magenta with Alexa Fluor® 647. Images were taken using Leica stellaris 5. Protein abundance based on laser Intensity and Smart Gain □ Medium. Scale bar, 20 μm.



Western blotting analysis using anti-serpin family B member 1 antibody (Cat#63565). Total cell lysates (30 μg) from various cell lines were loaded and separated by SDS-PAGE. The blot was incubated with anti-serpin family B member 1 antibody (Cat#63565, 1:5,000) and HRP-conjugated goat anti-mouse secondary antibody (Cat#101, 1:20,000) respectively. Image was developed using NaQ™ ECL Substrate Kit (Cat#716).

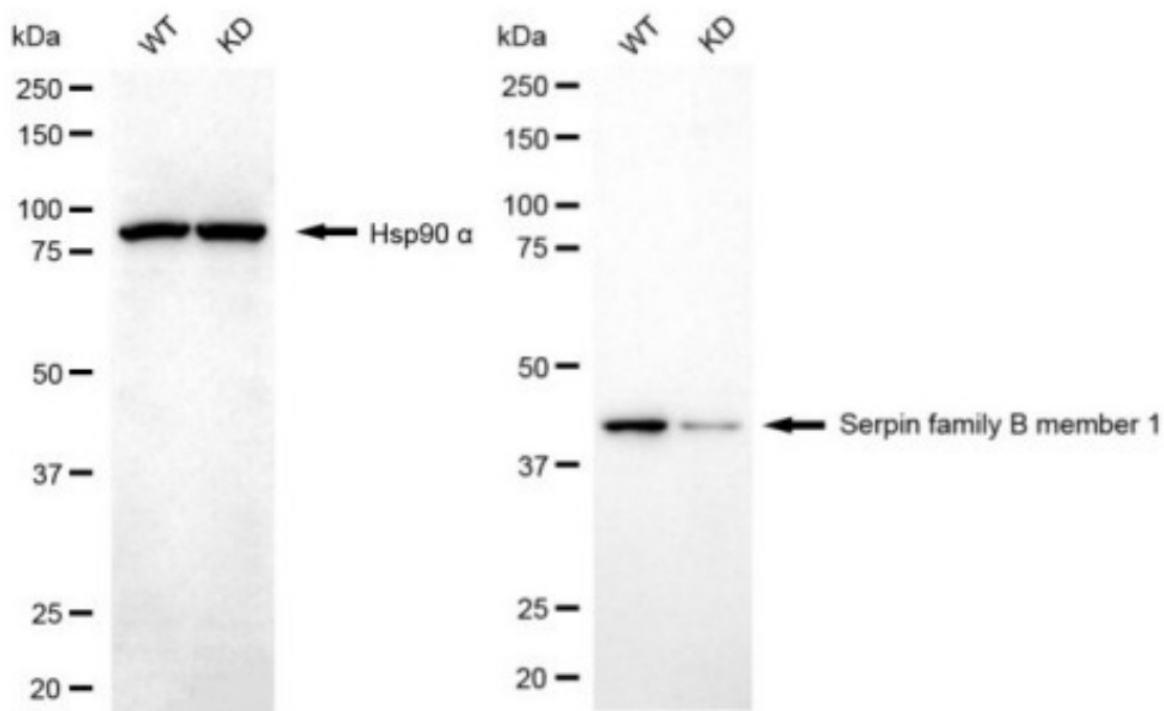
### SUPPORT

SUPPORT@GENUINBIOTECH.COM  
TEL: +1-540-855-7041

### ORDERS

SALES@GENUINBIOTECH.COM  
FAX: +1-540-855-7041

[WWW.GENUINBIOTECH.COM](http://WWW.GENUINBIOTECH.COM)



Copyright ©2024 Genuin Biotechnologies LLC

Western blotting analysis using anti-serpin family B member 1 antibody (Cat#63565). Serpin family B member 1 expression in wild type (WT) and serpin family B member 1 (SERPINB1) knockdown (KD) HSHC cells with 20 µg of total cell lysates. Hsp90 α serves as a loading control. The blot was incubated with anti-serpin family B member 1 antibody (Cat#63565, 1:5,000) and HRP-conjugated goat anti-mouse secondary antibody (Cat#101, 1:20,000) respectively. Image was developed using FeQ™ ECL Substrate Kit (Cat#226).