

KD-Validated Anti-CHCHD3 Mouse Monoclonal Antibody



Catalog #: 63568

Aliases

CHCHD3; Coiled-Coil-Helix-Coiled-Coil-Helix Domain Containing 3; MINOS3; PPP1R22; MICOS19; Mic19; Mitochondrial Contact Site And Cristae Organizing System Subunit 19; Mitochondrial Inner Membrane Organizing System 3; Protein Phosphatase 1, Regulatory Subunit 22; MICOS Complex Subunit MIC19; FLJ20420; Coiled-Coil-Helix-Coiled-Coil-Helix Domain-Containing Protein 3, Mitochondrial; Coiled-Coil-Helix-Coiled-Coil-Helix Domain-Containing Protein 3; MIC19

Background

Gene Name: CHCHD3

NCBI Gene Entry: [54927](#)

UniProt Entry: [Q9NX63](#)

Application Information

Molecular Weight: Predicted, 26 kDa; observed, 26 kDa

Clonality: Mouse monoclonal antibody

Clone ID: 24GB6560

Species Reactivity: Human, mouse, rat

Applications Tested: Western blotting (WB), immunocytochemistry (IC)

Immunogen

Recombinant protein of human CHCHD3

Isotype

Mouse IgG1

Storage Buffer

Supplied in PBS (pH 7.4) containing 50% glycerol, and 0.02% sodium azide.

Storage

Store at -20 °C for one year.

Recommended Dilutions

Western Blotting (WB): 1:1,000-1:5,000

Immunocytochemistry (IC): 1:100-1:1,000

SUPPORT

SUPPORT@GENUINBIOTECH.COM
TEL: +1-540-855-7041

ORDERS

SALES@GENUINBIOTECH.COM
FAX: +1-540-855-7041

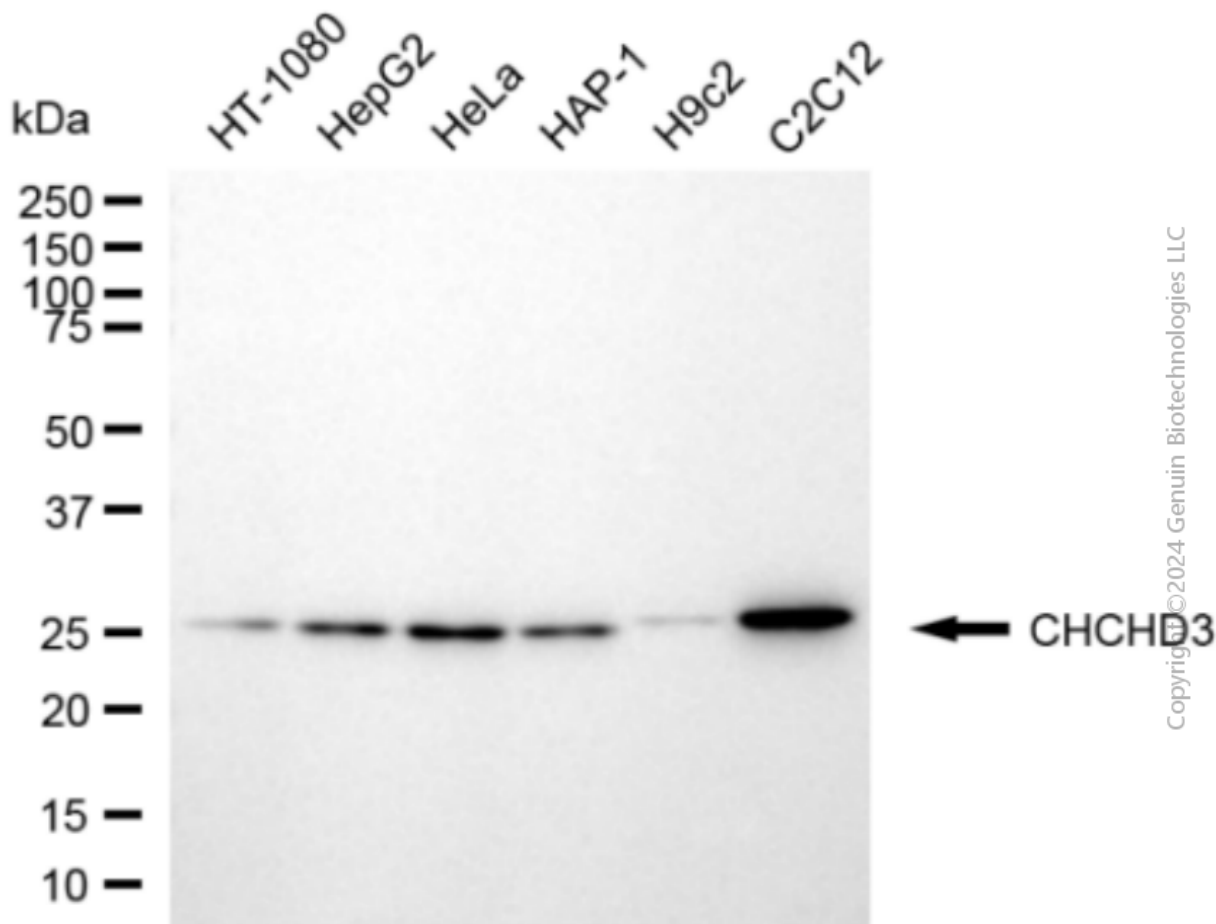
WWW.GENUINBIOTECH.COM

KD-Validated Anti-CHCHD3 Mouse Monoclonal Antibody

PAGE 2

Note: This product is for research use only.

Validation Data



Western blotting analysis using anti-CHCHD3 antibody (Cat#63568). Total cell lysates (30 µg) from various cell lines were loaded and separated by SDS-PAGE. The blot was incubated with anti-CHCHD3 antibody (Cat#63568, 1:5,000) and HRP-conjugated goat anti-mouse secondary antibody (Cat#101, 1:20,000) respectively. Image was developed using NaQ™ ECL Substrate Kit (Cat#716).

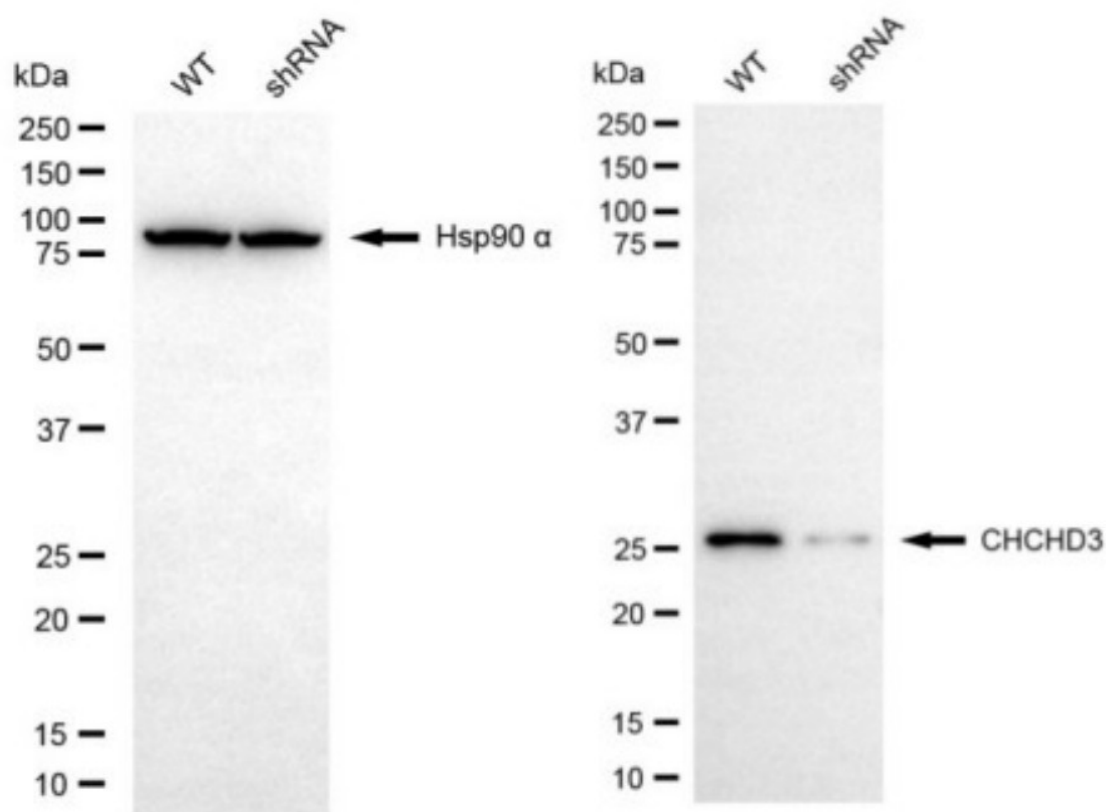
SUPPORT

SUPPORT@GENUINBIOTECH.COM
TEL: +1-540-855-7041

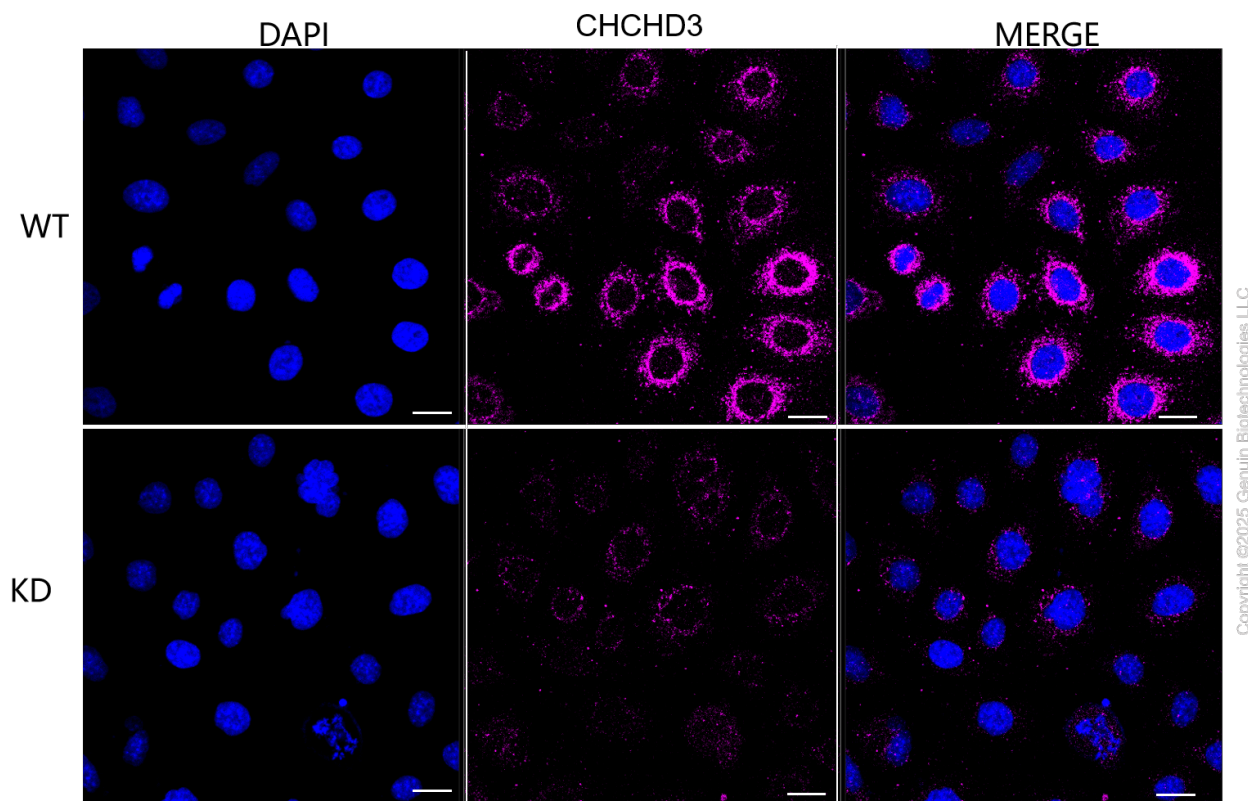
ORDERS

SALES@GENUINBIOTECH.COM
FAX: +1-540-855-7041

WWW.GENUINBIOTECH.COM



Western blotting analysis using anti-CHCHD3 antibody (Cat#63568). CHCHD3 expression in wild type (WT) and CHCHD3 shRNA knockdown (KD) HeLa cells with 20 µg of total cell lysates. Hsp90 α serves as a loading control. The blot was incubated with anti-CHCHD3 antibody (Cat#63568, 1:5,000) and HRP-conjugated goat anti-mouse secondary antibody (Cat#101, 1:20,000) respectively. Image was developed using NaQ™ ECL Substrate Kit (Cat#716).



Immunocytochemical staining of HeLa cells using anti-CHCHD3 antibody (Cat#63568, 1:1,000), Top panel: wild-type (WT); Bottom panel: Adiponectin receptor 1 shRNA knockdown (KD). Nuclei were stained blue with DAPI; CHCHD3 was stained magenta with Alexa Fluor® 647. Scale bar, 20 μ m. Permeabilization: Triton.