

KD-Validated Anti-Granulin Precursor Mouse Monoclonal Antibody



Catalog #: 63575

Aliases

GRN; Granulin Precursor; PCDGF; PGRN; Progranulin; CLN11; PC Cell-Derived Growth Factor; Glycoprotein Of 88 Kda; Glycoprotein 88; Proepithelin; Acrogranin; GP88; PEPI; Epithelin Precursor; Granulin-Epithelin; Epithelin; Granulins; GEP

Background

Gene Name: GRN

NCBI Gene Entry: [2896](#)

UniProt Entry: [P28799](#)

Application Information

Molecular Weight: Predicted, 64 kDa; observed, 73 kDa

Clonality: Mouse monoclonal antibody

Clone ID: 24GB6595

Species Reactivity: Human

Applications Tested: Western blotting (WB), flow cytometry (FCM), immunocytochemistry (IC)

Immunogen

Recombinant protein of human GRN

Isotype

Mouse IgG1

Storage Buffer

Supplied in PBS (pH 7.4) containing 50% glycerol, and 0.02% sodium azide.

Storage

Store at -20 °C for one year.

Recommended Dilutions

Western Blotting (WB): 1:500-1:2,500

Flow Cytometry (FCM): 1:2,000

Immunocytochemistry (IC): 1:100-1:1,000

Note: This product is for research use only.

SUPPORT

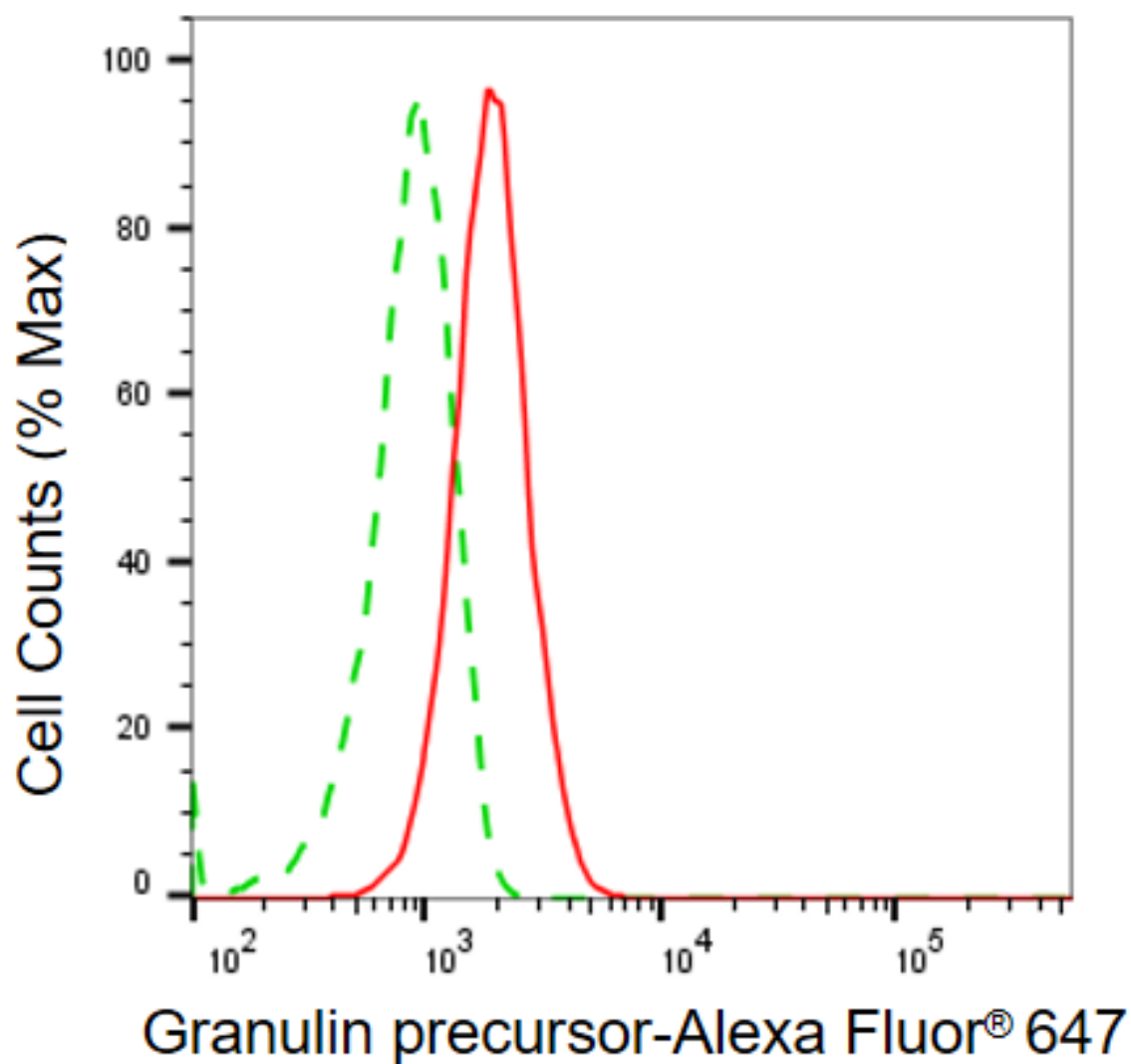
SUPPORT@GENUINBIOTECH.COM
TEL: +1-540-855-7041

ORDERS

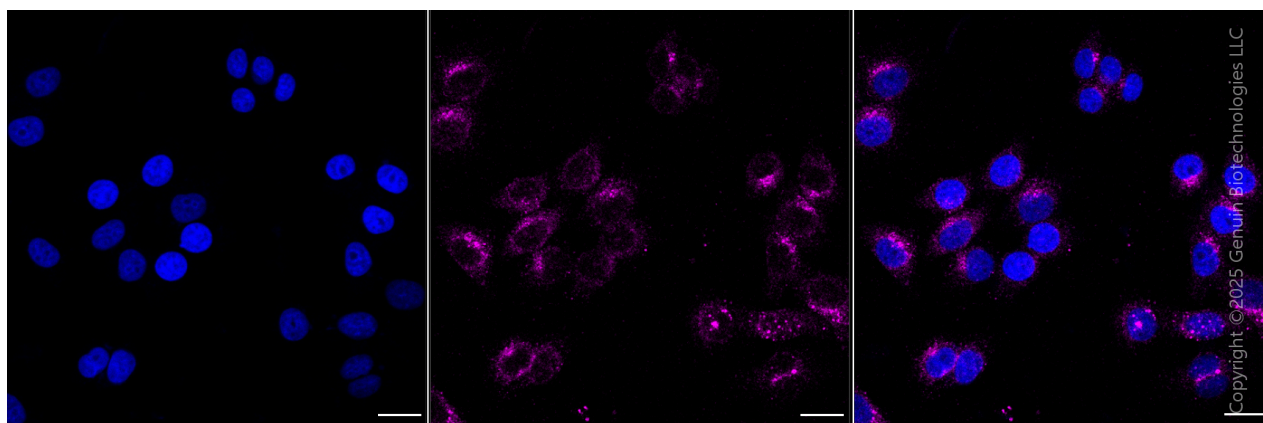
SALES@GENUINBIOTECH.COM
FAX: +1-540-855-7041

WWW.GENUINBIOTECH.COM

Validation Data



Flow cytometric analysis of Granulin precursor expression in HepG2 cells using anti-Granulin precursor antibody (Cat#63575, 1:2,000). Green, isotype control; red, Granulin precursor.



SUPPORT

SUPPORT@GENUINBIOTECH.COM
TEL: +1-540-855-7041

ORDERS

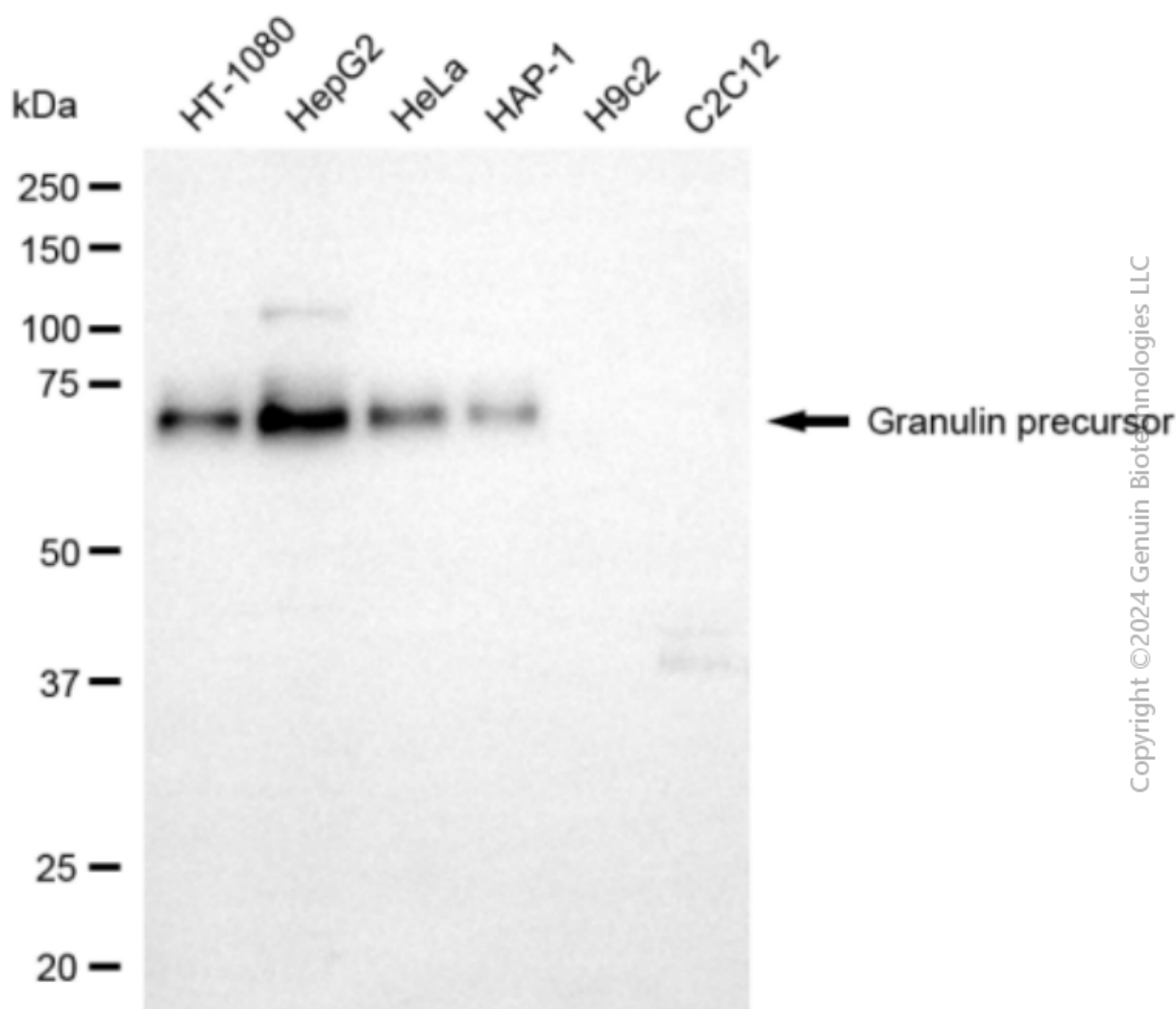
SALES@GENUINBIOTECH.COM
FAX: +1-540-855-7041

WWW.GENUINBIOTECH.COM

KD-Validated Anti-Granulin Precursor Mouse Monoclonal Antibody

PAGE 3

Immunocytochemical staining of HeLa cells using anti-Granulin precursor antibody (Cat#63575, 1:1,000), Top panel: wild-type (WT); Bottom panel: Granulin precursor shRNA knockdown (KD). Nuclei were stained blue with DAPI; Granulin precursor was stained magenta with Alexa Fluor® 647. Scale bar, 20 μ m.



Western blotting analysis using anti-granulin precursor antibody (Cat#63575). Total cell lysates (30 μ g) from various cell lines were loaded and separated by SDS-PAGE. The blot was incubated with anti-granulin precursor antibody (Cat#63575, 1:2,500) and HRP-conjugated goat anti-mouse secondary antibody (Cat#101, 1:20,000) respectively. Image was developed using FeQ™ ECL Substrate Kit (Cat#226).

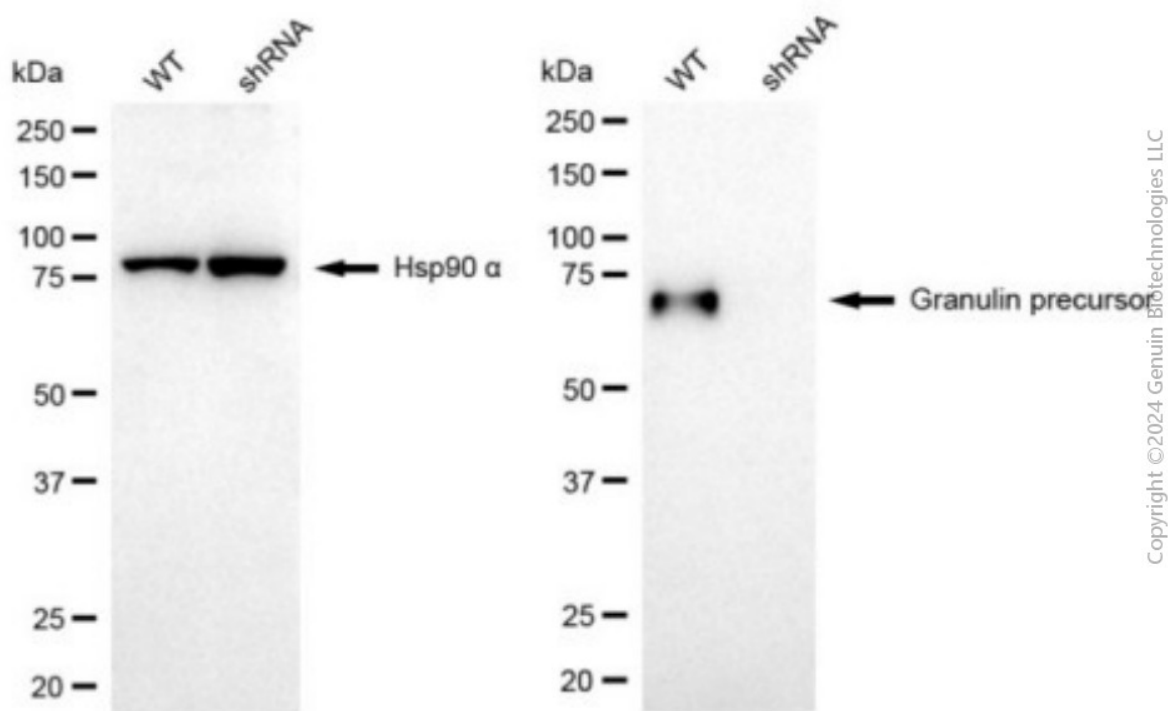
SUPPORT

SUPPORT@GENUINBIOTECH.COM
TEL: +1-540-855-7041

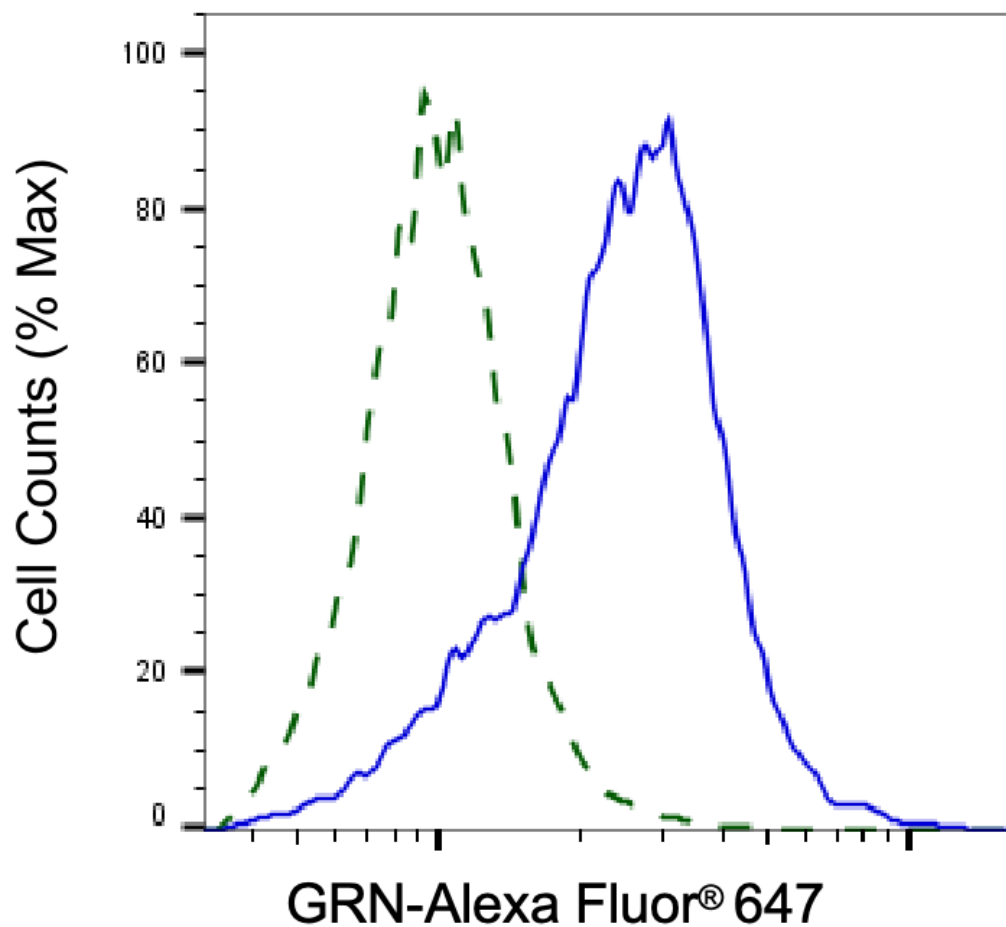
ORDERS

SALES@GENUINBIOTECH.COM
FAX: +1-540-855-7041

WWW.GENUINBIOTECH.COM

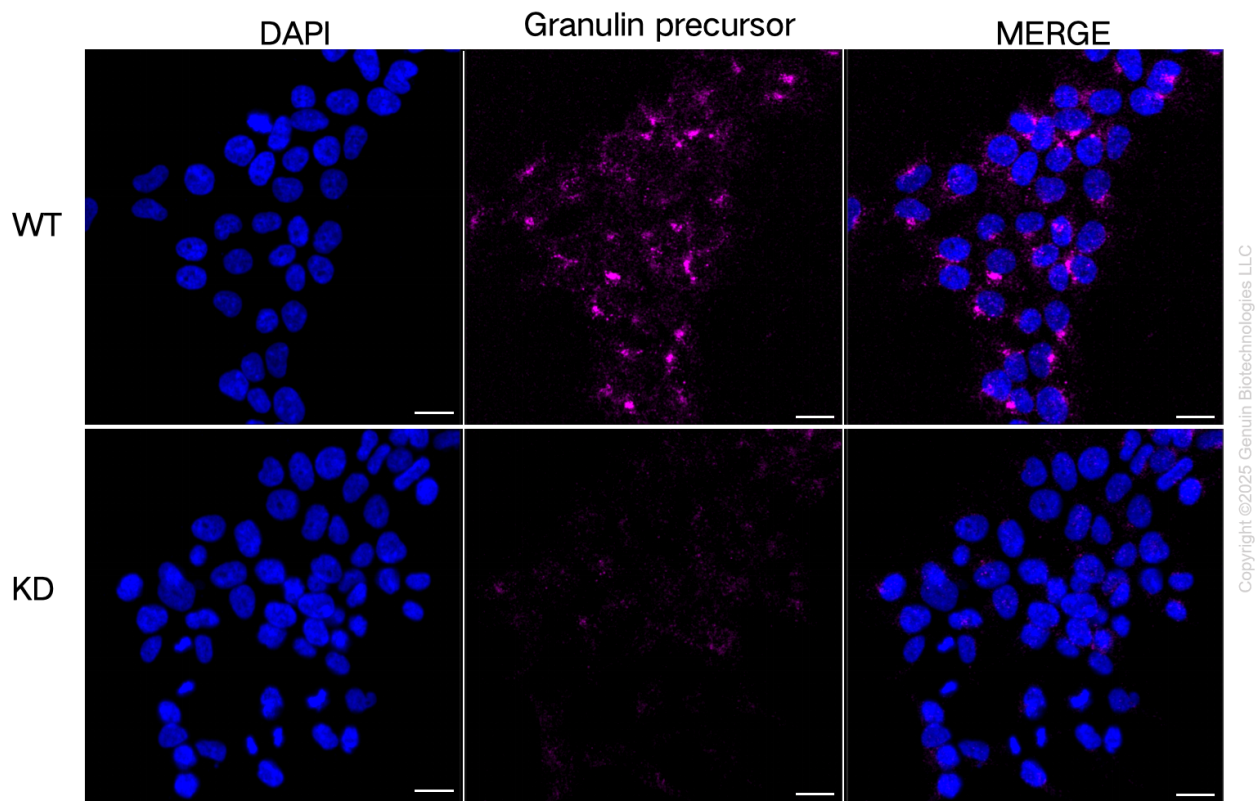


Western blotting analysis using anti-granulin precursor antibody (Cat#63575). Granulin precursor expression in wild type (WT) and granulin precursor (GRN) shRNA knockdown (KD) HeLa cells with 20 µg of total cell lysates. Hsp90 α serves as a loading control. The blot was incubated with anti-granulin precursor antibody (Cat#63575, 1:2,500) and HRP-conjugated goat anti-mouse secondary antibody (Cat#101, 1:20,000) respectively. Image was developed using NaQ™ ECL Substrate Kit (Cat#716).



Copyright ©2025 Genuin Biotechnologies LLC

Validation of GRN knockdown using flow cytometry. Wild-type(WT, Blue) and knockdown(KD, Green) HeLa cells were stained with anti-GRN antibody (Cat#63575, 1:2,000) and analyzed using BD flow cytometer.



Immunocytochemical staining of HeLa cells using anti-Granulin precursor antibody (Cat#63575, 1:1,000), Top panel: wild-type (WT); Bottom panel: Granulin precursor shRNA knockdown (KD). Nuclei were stained blue with DAPI; Granulin precursor was stained magenta with Alexa Fluor® 647. Scale bar, 20 μ m.