

KD-Validated Anti-CDCA8 Mouse Monoclonal Antibody



Catalog #: 63576

Aliases

CDCA8; Cell Division Cycle Associated 8; Borealin; MESRGP; DasraB; BOR; Pluripotent Embryonic Stem Cell-Related Gene 3 Protein; Cell Division Cycle-Associated Protein 8; FLJ12042; HDasra-B; Dasra-B; Dasra B; PESCRG3

Background

Gene Name: CDCA8

NCBI Gene Entry: [55143](#)

UniProt Entry: [Q53HL2](#)

Application Information

Molecular Weight: Predicted, 31 kDa; observed, 31 kDa

Clonality: Mouse monoclonal antibody

Clone ID: 24GB6600

Species Reactivity: Human

Applications Tested: Western blotting (WB), flow cytometry (FCM), immunocytochemistry (IC)

Immunogen

Recombinant protein of human CDCA8

Isotype

Mouse IgG1

Storage Buffer

Supplied in PBS (pH 7.4) containing 50% glycerol, and 0.02% sodium azide.

Storage

Store at -20 °C for one year.

Recommended Dilutions

Western Blotting (WB): 1:1,000-1:5,000

Flow Cytometry (FCM): 1:2,000

Immunocytochemistry (IC): 1:100-1:1,000

Note: This product is for research use only.

SUPPORT

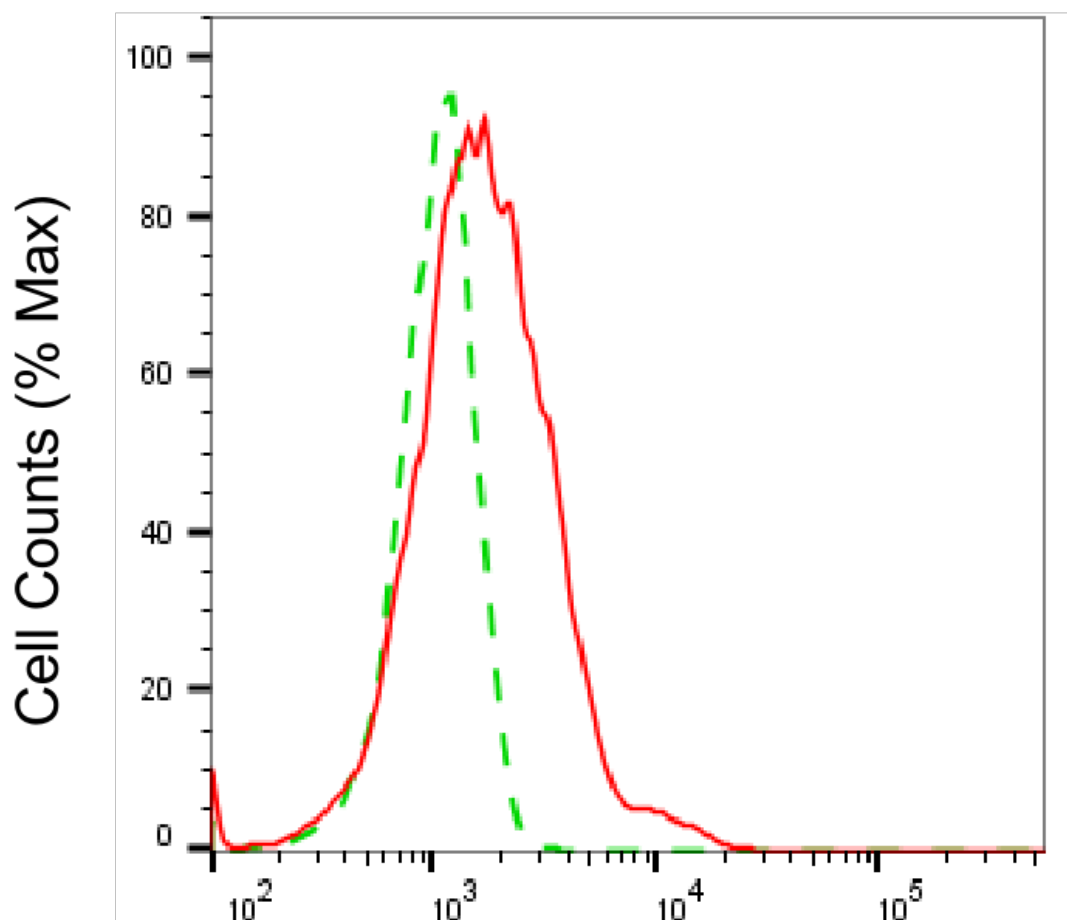
SUPPORT@GENUINBIOTECH.COM
TEL: +1-540-855-7041

ORDERS

SALES@GENUINBIOTECH.COM
FAX: +1-540-855-7041

WWW.GENUINBIOTECH.COM

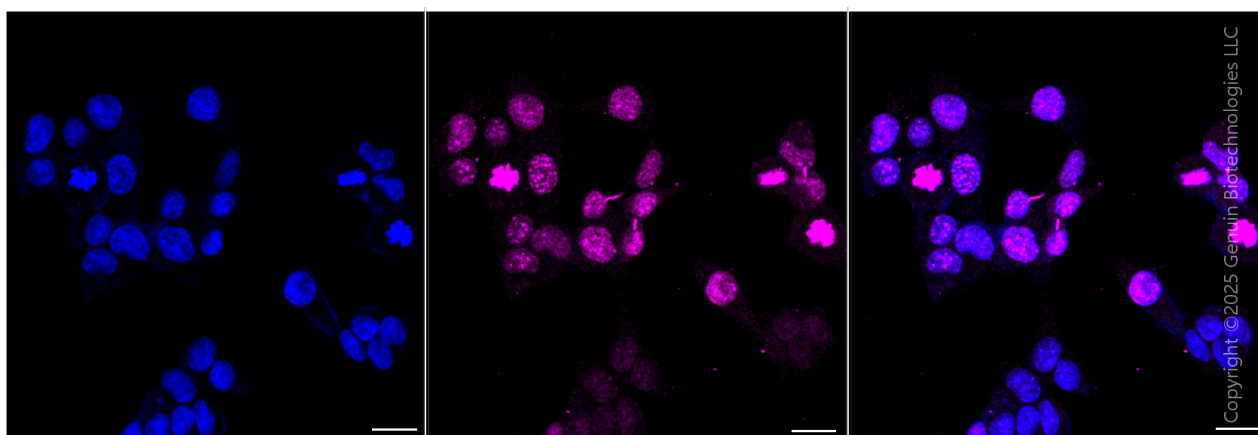
Validation Data



Copyright ©2025 Genuin Biotechnologies LLC

Cell division cycle associated 8-Alexa Fluor® 647

Flow cytometric analysis of Cell division cycle associated 8 expression in HAP-1 cells using anti-Cell division cycle associated 8 antibody (Cat#63576, 1:2,000). Green, isotype control; red, Cell division cycle associated 8.



Copyright ©2025 Genuin Biotechnologies LLC

SUPPORT

SUPPORT@GENUINBIOTECH.COM
TEL: +1-540-855-7041

ORDERS

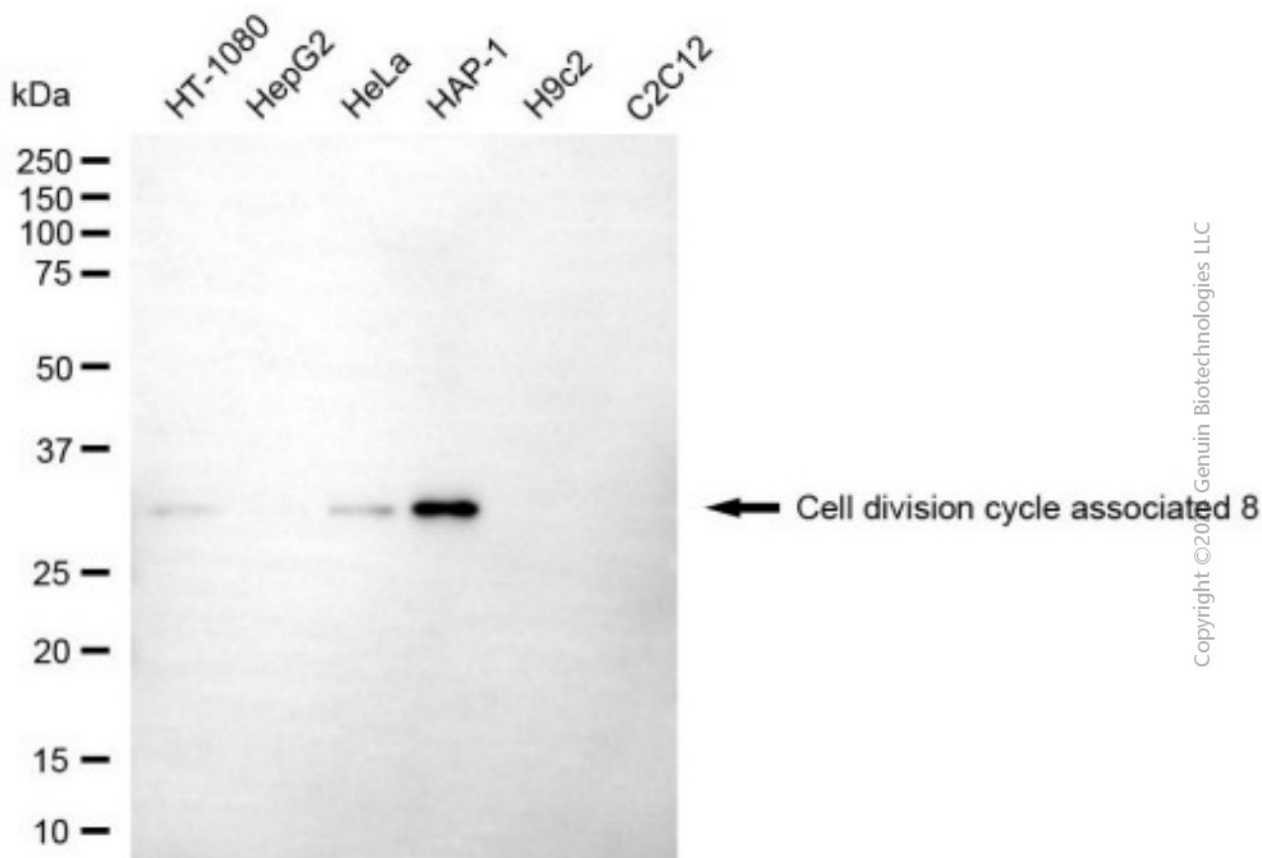
SALES@GENUINBIOTECH.COM
FAX: +1-540-855-7041

WWW.GENUINBIOTECH.COM

KD-Validated Anti-CDCA8 Mouse Monoclonal Antibody

PAGE 3

Immunocytochemical staining of HAP-1 cells with Cell division cycle associated 8 antibody (Cat#63576, 1:1,000). Nuclei were stained blue with DAPI; Cell division cycle associated 8 was stained magenta with Alexa Fluor® 647. Images were taken using Leica stellaris 5. Protein abundance based on laser Intensity and smart gain: Medium. Scale bar, 20 µm.



Western blotting analysis using anti-cell division cycle associated 8 antibody (Cat#63576). Total cell lysates (30 µg) from various cell lines were loaded and separated by SDS-PAGE. The blot was incubated with anti-cell division cycle associated 8 antibody (Cat#63576, 1:5,000) and HRP-conjugated goat anti-mouse secondary antibody (Cat#101, 1:20,000) respectively. Image was developed using FeQ™ ECL Substrate Kit (Cat#226).

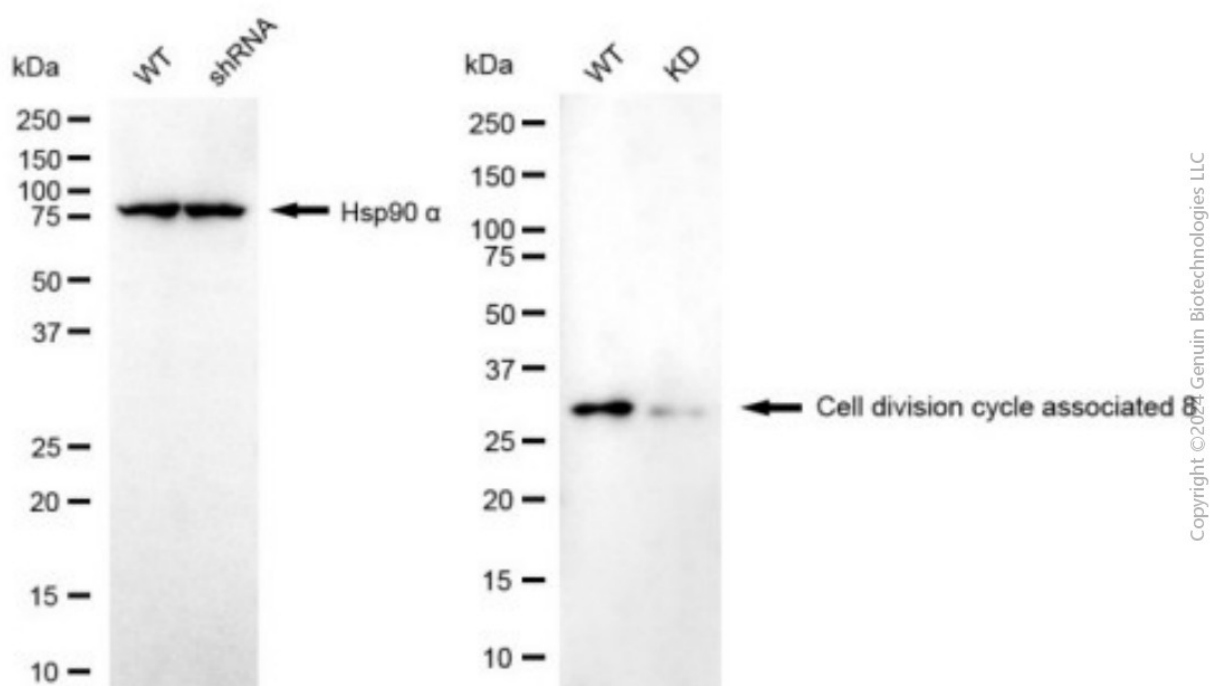
SUPPORT

SUPPORT@GENUINBIOTECH.COM
TEL: +1-540-855-7041

ORDERS

SALES@GENUINBIOTECH.COM
FAX: +1-540-855-7041

WWW.GENUINBIOTECH.COM



Western blotting analysis using anti-cell division cycle associated 8 antibody (Cat#63576). cell division cycle associated 8 expression in wild type (WT) and cell division cycle associated 8 (CDCA8) knockdown (KD) HSHC cells with 20 µg of total cell lysates. Hsp90 α serves as a loading control. The blot was incubated with anti-cell division cycle associated 8 antibody (Cat#63576, 1:5,000) and HRP-conjugated goat anti-mouse secondary antibody (Cat#101, 1:20,000) respectively. Image was developed using FeQ™ ECL Substrate Kit (Cat#226).