

# KD-Validated Anti-ETF $\alpha$ Mouse Monoclonal Antibody



**Catalog #: 63577**

## Aliases

ETF $\alpha$ ; Electron Transfer Flavoprotein Subunit Alpha; MADD; GA2; EMA; Electron Transfer Flavoprotein Subunit Alpha, Mitochondrial; Multiple Acyl-CoA Dehydrogenase Deficiency; Glutaric Aciduria II; Alpha-ETF; Electron-Transfer-Flavoprotein, Alpha Polypeptide; Electron Transfer Flavoprotein, Alpha Polypeptide; Electron Transfer Flavoprotein Alpha Subunit; Epididymis Secretory Sperm Binding Protein

## Background

Gene Name: ETF $\alpha$

NCBI Gene Entry: [2108](#)

UniProt Entry: [P13804](#)

## Application Information

Molecular Weight: Predicted, 35 kDa; observed, 30 kDa

Clonality: Mouse monoclonal antibody

Clone ID: 24GB6605

Species Reactivity: Human, mouse

Applications Tested: Western blotting (WB), flow cytometry (FCM), immunocytochemistry (IC)

## Immunogen

Recombinant protein of human ETF $\alpha$

## Isotype

Mouse IgG1

## Storage Buffer

Supplied in PBS (pH 7.4) containing 50% glycerol, and 0.02% sodium azide.

## Storage

Store at -20 °C for one year.

## Recommended Dilutions

Western Blotting (WB): 1:1,000-1:5,000

Flow Cytometry (FCM): 1:2,000

Immunocytochemistry (IC): 1:100-1:1,000

---

### SUPPORT

SUPPORT@GENUINBIOTECH.COM  
TEL: +1-540-855-7041

### ORDERS

SALES@GENUINBIOTECH.COM  
FAX: +1-540-855-7041

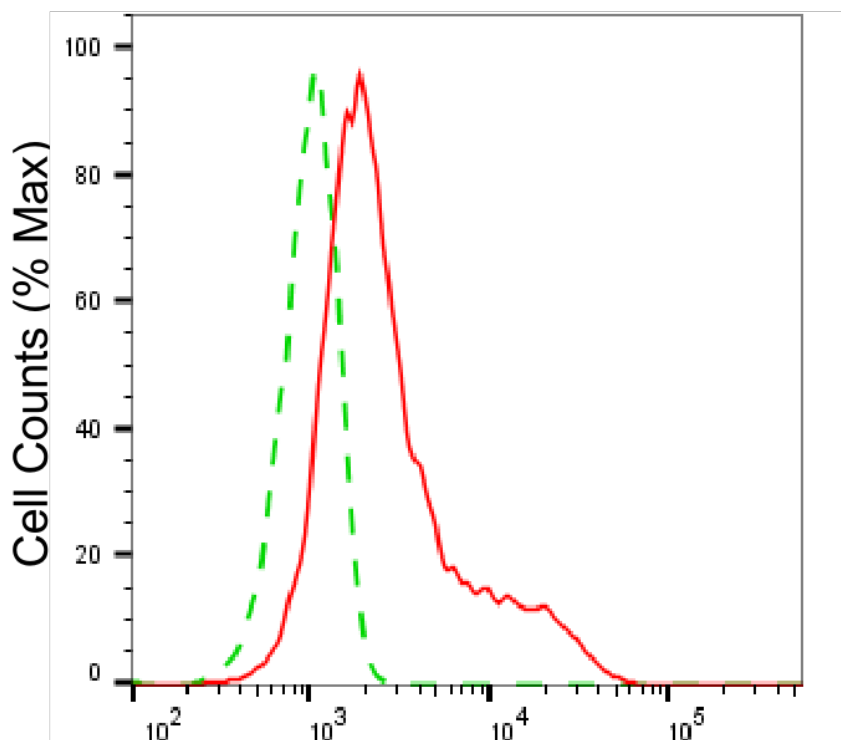
[WWW.GENUINBIOTECH.COM](http://WWW.GENUINBIOTECH.COM)

## KD-Validated Anti-ETFA Mouse Monoclonal Antibody

PAGE 2

**Note:** This product is for research use only.

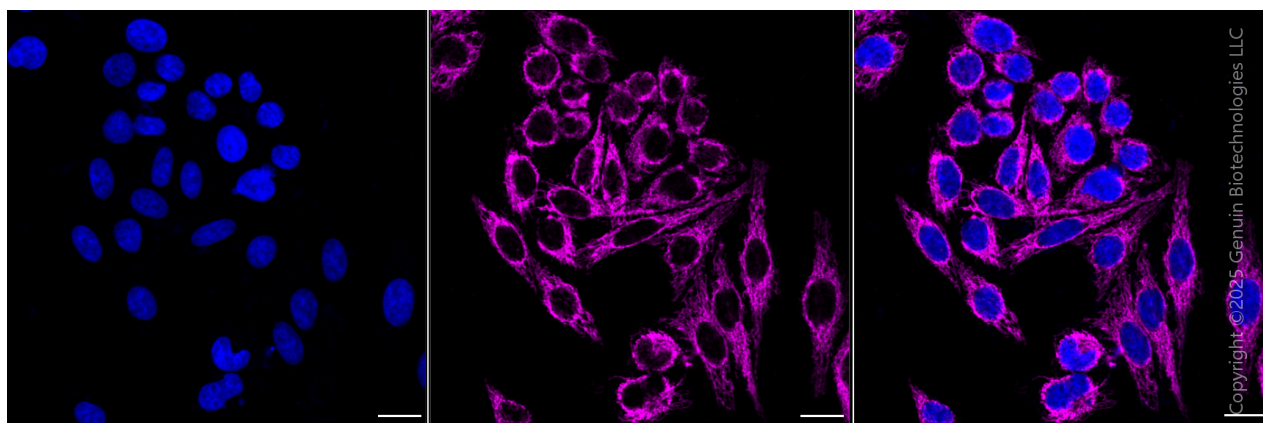
### Validation Data



Copyright ©2025 Genuin Biotechnologies LLC

### Electron transfer flavoprotein subunit alpha-Alexa Fluor® 647

Flow cytometric analysis of Electron transfer flavoprotein subunit alpha expression in HepG2 cells using anti-Electron transfer flavoprotein subunit alpha antibody (Cat#63577, 1:2,000). Green, isotype control; red, Electron transfer flavoprotein subunit alpha.



Copyright ©2025 Genuin Biotechnologies LLC

Immunocytochemical staining of HeLa cells using anti-Electron transfer flavoprotein subunit alpha antibody (Cat#63577, 1:1,000), Top panel: wild-type (WT); Bottom panel: Adiponectin receptor 1 shRNA knockdown (KD). Nuclei were stained blue with DAPI; Electron transfer

#### SUPPORT

SUPPORT@GENUINBIOTECH.COM  
TEL: +1-540-855-7041

#### ORDERS

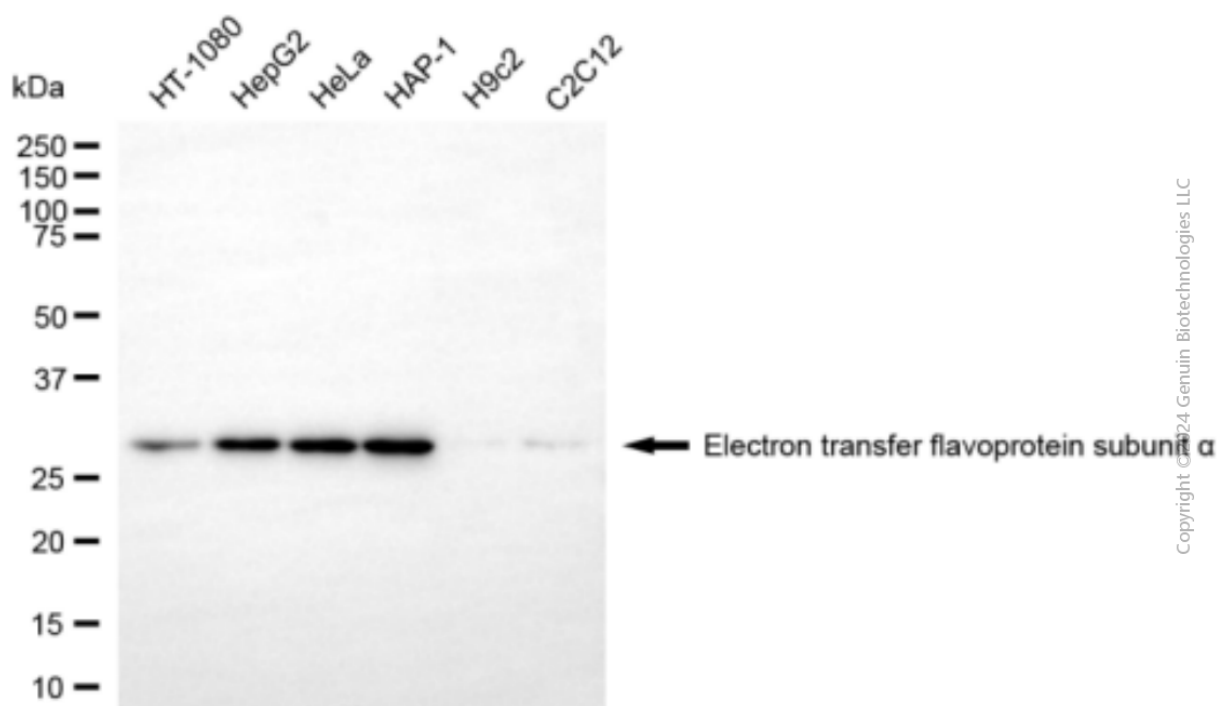
SALES@GENUINBIOTECH.COM  
FAX: +1-540-855-7041

WWW.GENUINBIOTECH.COM

## KD-Validated Anti-ETFA Mouse Monoclonal Antibody

PAGE 3

flavoprotein subunit alpha was stained magenta with Alexa Fluor® 647. Scale bar, 20  $\mu$ m. Permeabilization: Triton.



Western blotting analysis using anti-electron transfer flavoprotein subunit alpha antibody (Cat#63577). Total cell lysates (30  $\mu$ g) from various cell lines were loaded and separated by SDS-PAGE. The blot was incubated with anti-electron transfer flavoprotein subunit alpha antibody (Cat#63577, 1:5,000) and HRP-conjugated goat anti-mouse secondary antibody (Cat#101, 1:20,000) respectively. Image was developed using FeQ™ ECL Substrate Kit (Cat#226).

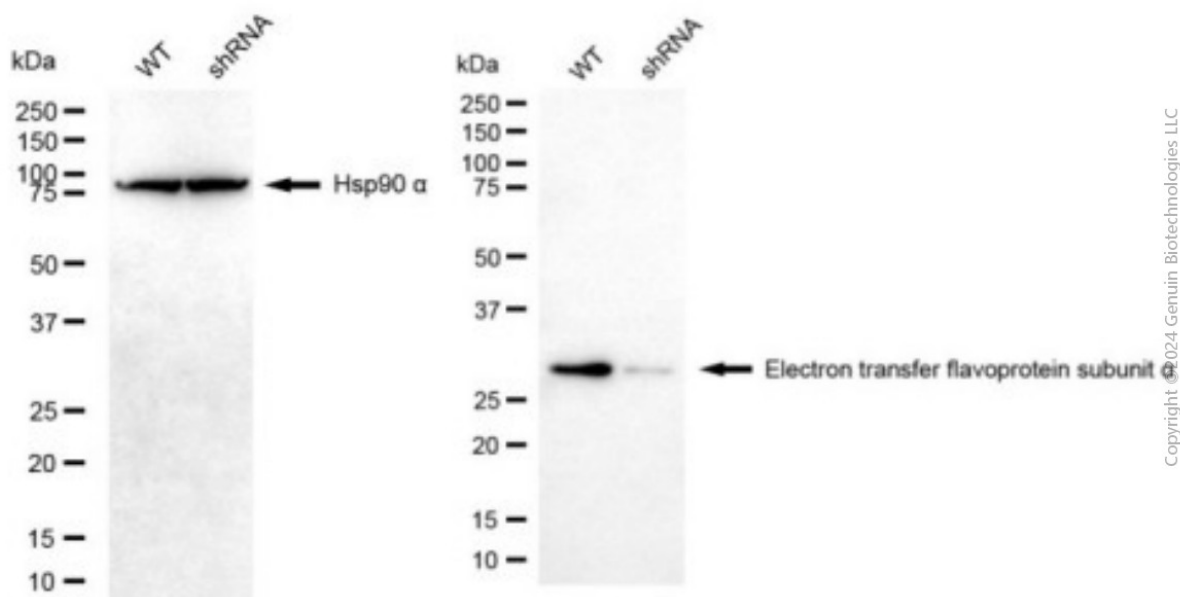
### SUPPORT

SUPPORT@GENUINBIOTECH.COM  
TEL: +1-540-855-7041

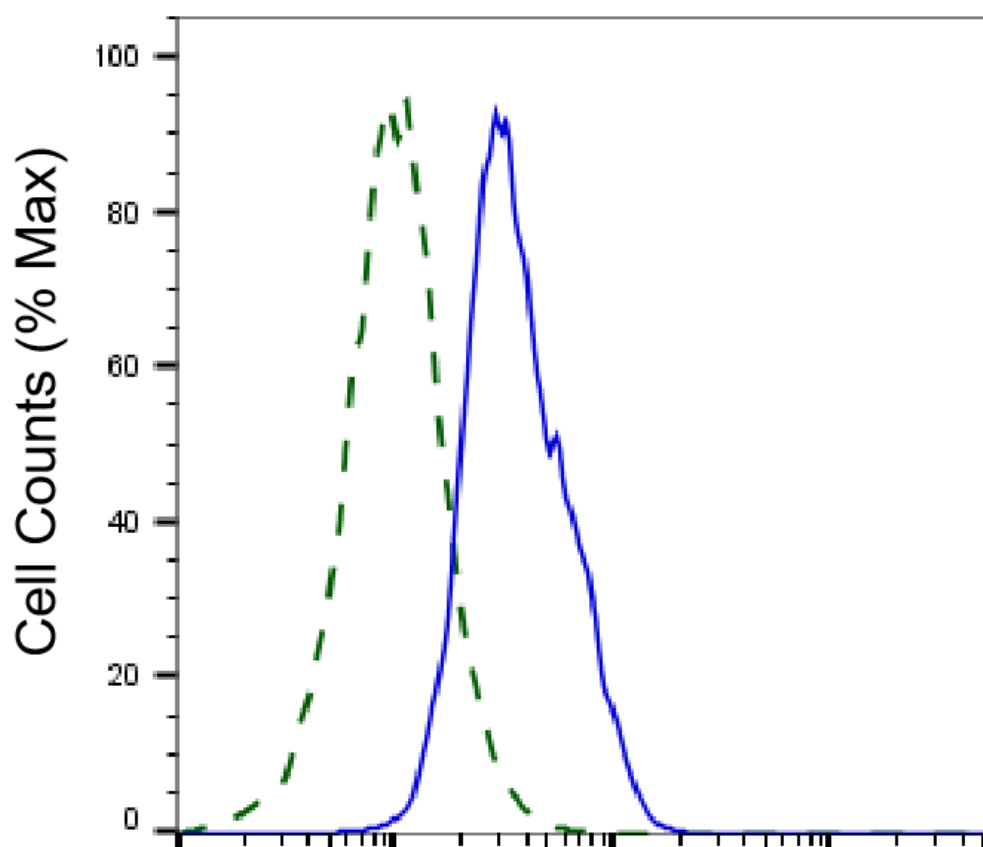
### ORDERS

SALES@GENUINBIOTECH.COM  
FAX: +1-540-855-7041

WWW.GENUINBIOTECH.COM



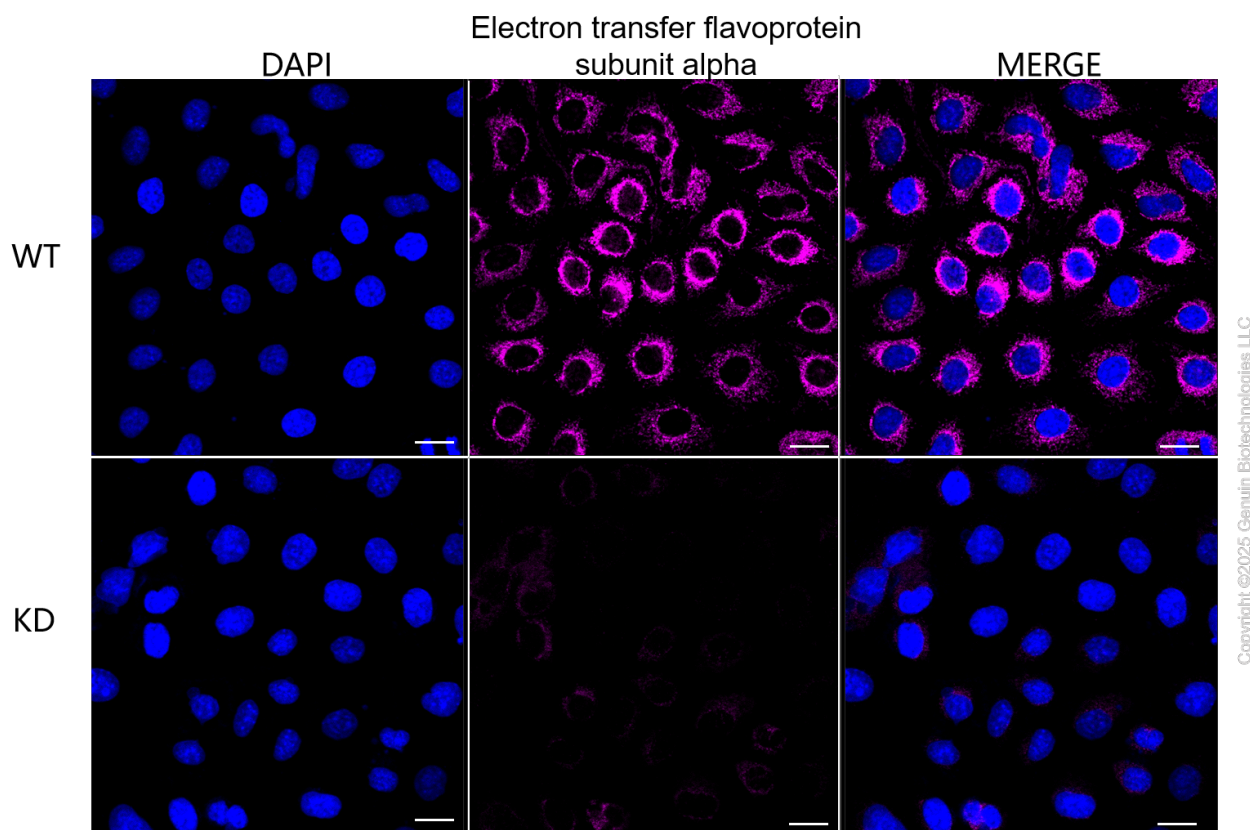
Western blotting analysis using anti-electron transfer flavoprotein subunit alpha antibody (Cat#63577). Electron transfer flavoprotein subunit alpha expression in wild type (WT) and electron transfer flavoprotein subunit alpha (ETFA) shRNA knockdown (KD) HeLa cells with 20 µg of total cell lysates. Hsp90 α serves as a loading control. The blot was incubated with anti-electron transfer flavoprotein subunit alpha antibody (Cat#63577, 1:5,000) and HRP-conjugated goat anti-mouse secondary antibody (Cat#101, 1:20,000) respectively. Image was developed using NaQ™ ECL Substrate Kit (Cat#716).



Copyright ©2025 Genuin Biotechnologies LLC

## Electron transfer flavoprotein subunit alpha-Alexa Fluor® 647

Validation of Electron transfer flavoprotein subunit alpha knockdown using flow cytometry. Wild-type (WT, Blue) and knockdown (KD, Green) HeLa cells were stained with anti-Electron transfer flavoprotein subunit alpha antibody (Cat#63577, 1:2,000) and analyzed using BD flow cytometer.



Immunocytochemical staining of HeLa cells using anti-Electron transfer flavoprotein subunit alpha antibody (Cat#63577, 1:1,000), Top panel: wild-type (WT); Bottom panel: Adiponectin receptor 1 shRNA knockdown (KD). Nuclei were stained blue with DAPI; Electron transfer flavoprotein subunit alpha was stained magenta with Alexa Fluor® 647. Scale bar, 20  $\mu$ m. Permeabilization: Triton.