

KD-Validated Anti-SRSF9 Mouse Monoclonal Antibody



Catalog #: 63578

Aliases

SRSF9; Serine And Arginine Rich Splicing Factor 9; Splicing Factor, Arginine/Serine-Rich 9; Serine/Arginine-Rich Splicing Factor 9; SRp30c; SFRS9; Pre-mRNA-Splicing Factor SRp30C; SR Splicing Factor 9; SRP30C

Background

Gene Name: SRSF9

NCBI Gene Entry: [8683](#)

UniProt Entry: [Q13242](#)

Application Information

Molecular Weight: Predicted, 26 kDa; observed, 26 kDa

Clonality: Mouse monoclonal antibody

Clone ID: 24GB6610

Species Reactivity: Human, mouse, rat

Applications Tested: Western blotting (WB), flow cytometry (FCM), immunocytochemistry (IC)

Immunogen

Recombinant protein of human SRSF9

Isotype

Mouse IgG2b

Storage Buffer

Supplied in PBS (pH 7.4) containing 50% glycerol, and 0.02% sodium azide.

Storage

Store at -20 °C for one year.

Recommended Dilutions

Western Blotting (WB): 1:1,000-1:5,000

Flow Cytometry (FCM): 1:2,000

Immunocytochemistry (IC): 1:100-1:1,000

Note: This product is for research use only.

SUPPORT

SUPPORT@GENUINBIOTECH.COM
TEL: +1-540-855-7041

ORDERS

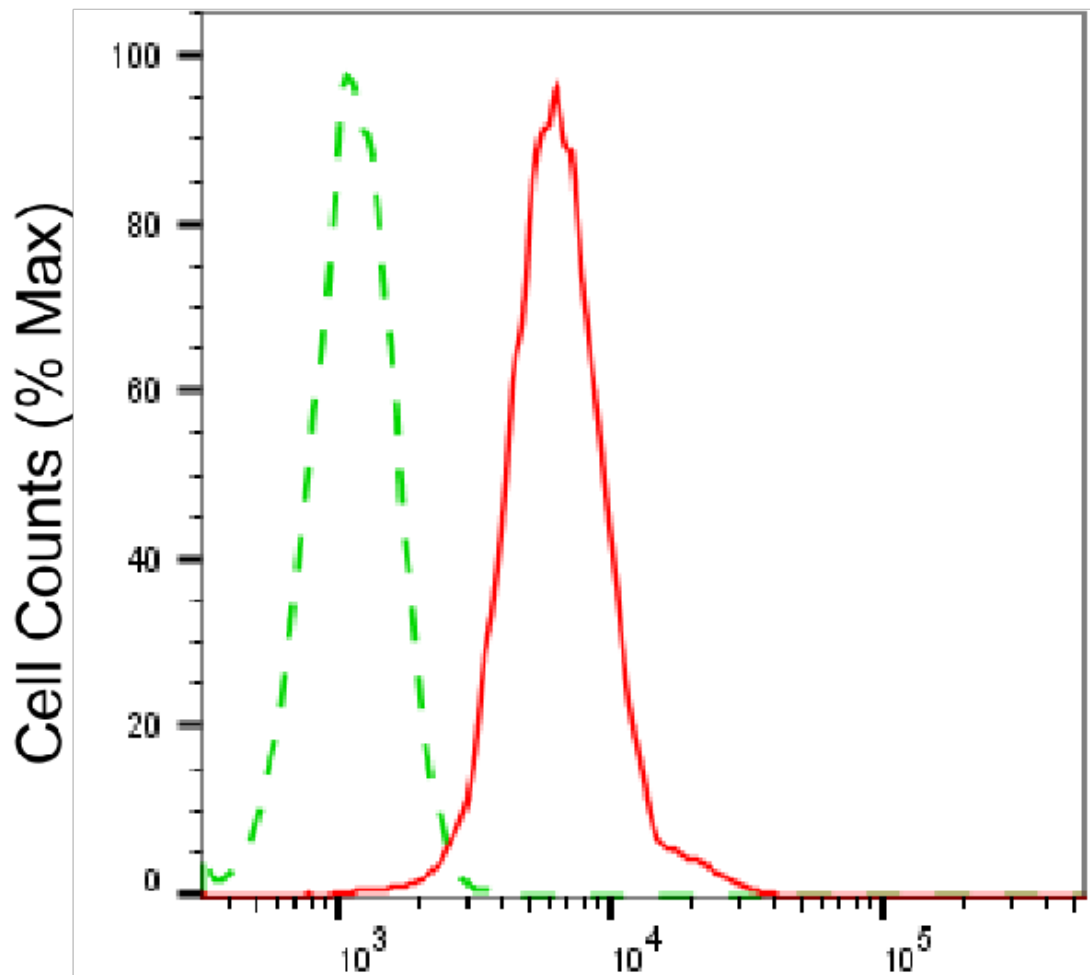
SALES@GENUINBIOTECH.COM
FAX: +1-540-855-7041

WWW.GENUINBIOTECH.COM

KD-Validated Anti-SRSF9 Mouse Monoclonal Antibody

PAGE 2

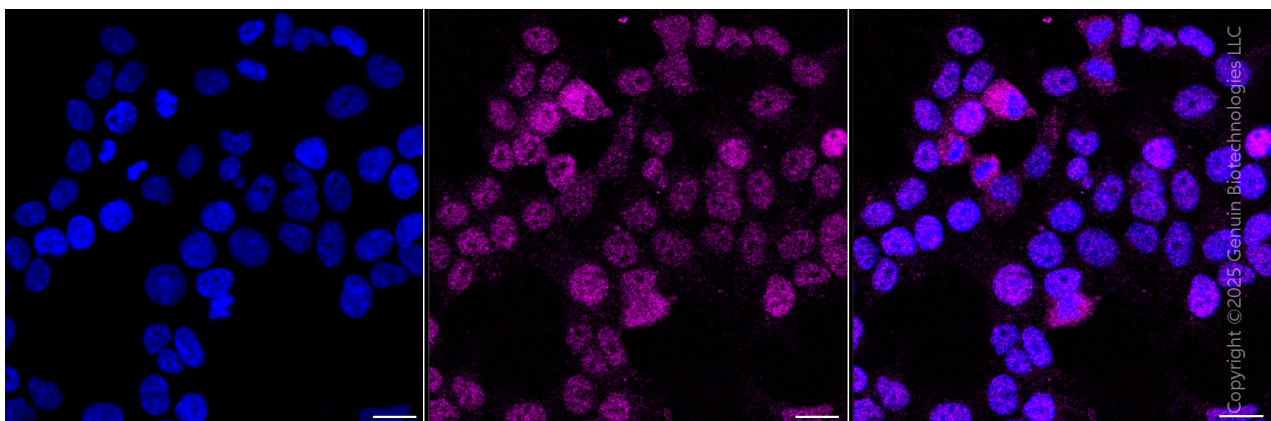
Validation Data



Copyright ©2025 Genuin Biotechnologies LLC

SRSF9-Alexa Fluor® 647

Flow cytometric analysis of SRSF9 expression in HeLa cells using anti-SRSF9 antibody (Cat#63578, 1:2,000). Green, isotype control; red, SRSF9.



Copyright ©2025 Genuin Biotechnologies LLC

SUPPORT

SUPPORT@GENUINBIOTECH.COM
TEL: +1-540-855-7041

ORDERS

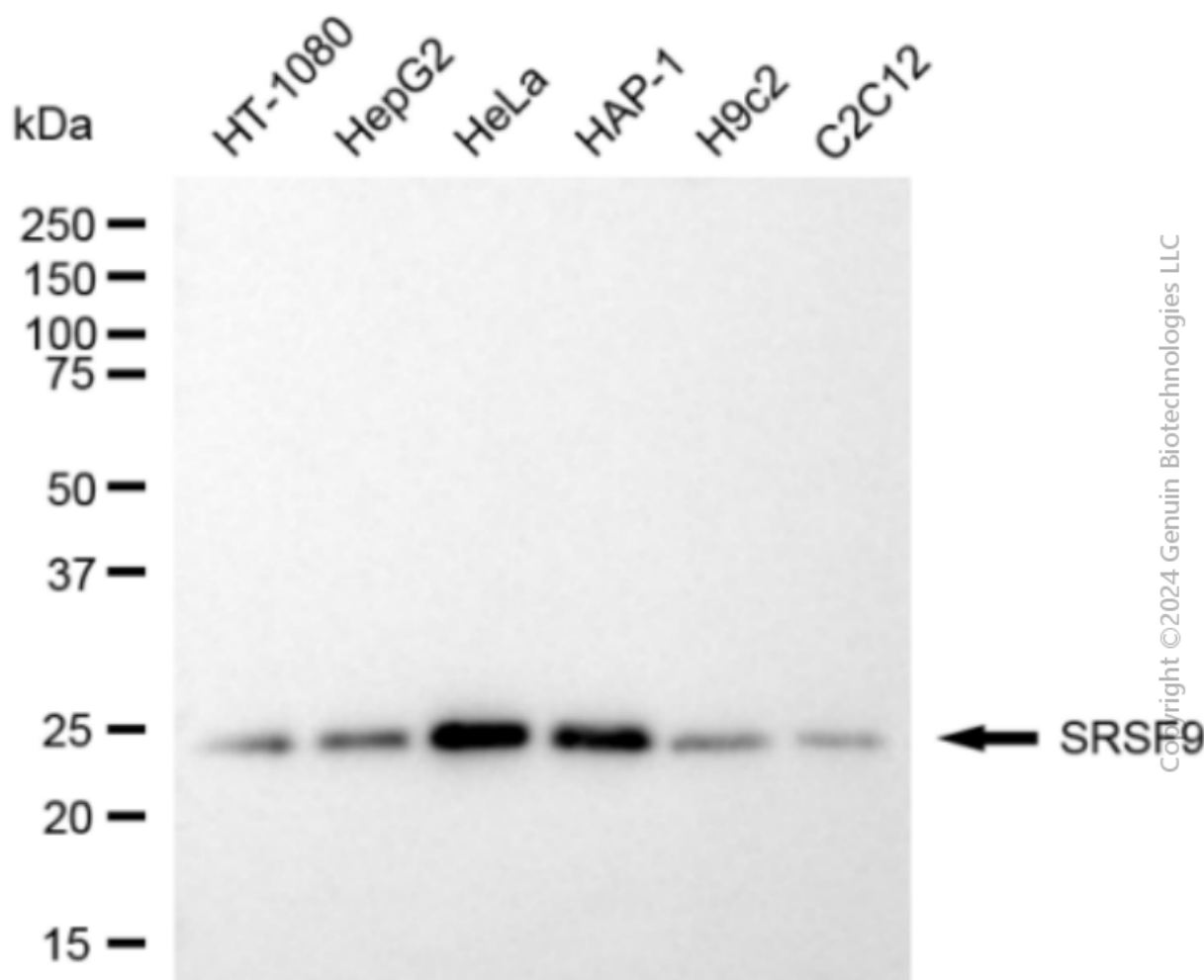
SALES@GENUINBIOTECH.COM
FAX: +1-540-855-7041

WWW.GENUINBIOTECH.COM

KD-Validated Anti-SRSF9 Mouse Monoclonal Antibody

PAGE 3

Immunocytochemical staining of HeLa cells with anti-SRSF9 antibody (Cat#63578, 1:1,000) . Nuclei were stained blue with DAPI; SRSF9 was stained magenta with Alexa Fluor® 647. Images were taken using Leica stellaris 5. Protein abundance based on laser Intensity and Smart Gain□ Low. Scale bar, 20 μm.



Western blotting analysis using anti-SRSF9 antibody (Cat#63578). Total cell lysates (30 μg) from various cell lines were loaded and separated by SDS-PAGE. The blot was incubated with anti-SRSF9 antibody (Cat#63578, 1:5,000) and HRP-conjugated goat anti-mouse secondary antibody (Cat#101, 1:20,000) respectively. Image was developed using NaQ™ ECL Substrate Kit (Cat#716).

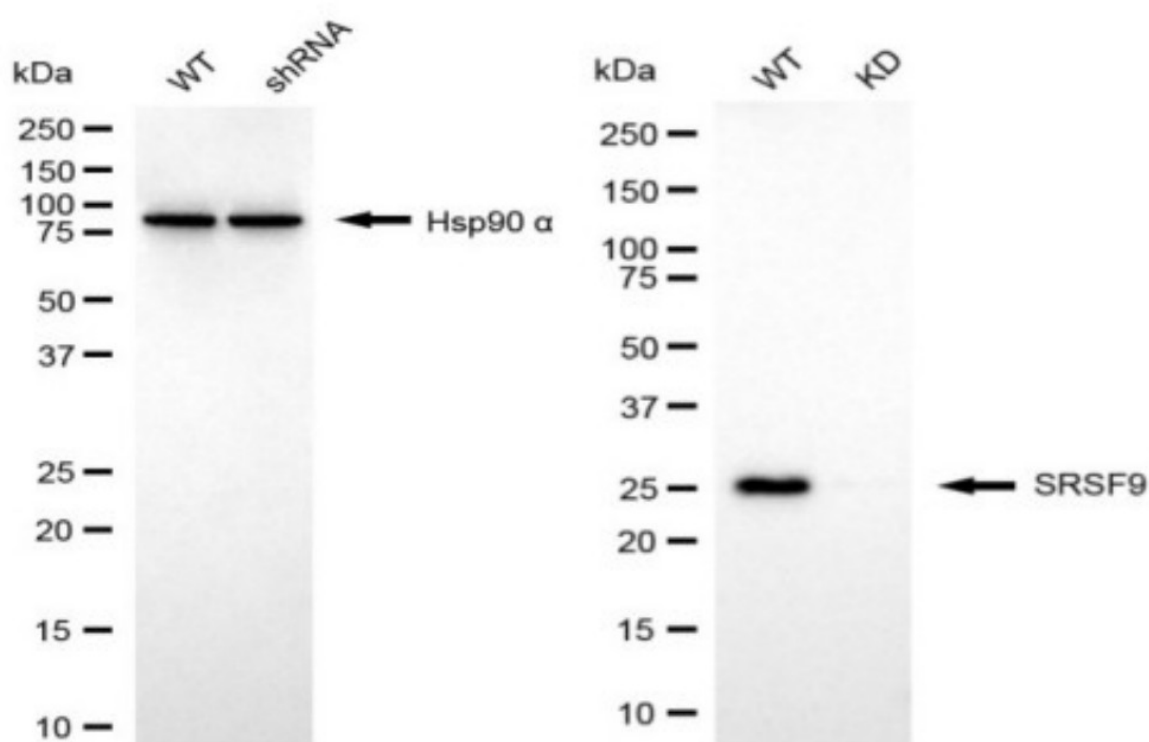
SUPPORT

SUPPORT@GENUINBIOTECH.COM
TEL: +1-540-855-7041

ORDERS

SALES@GENUINBIOTECH.COM
FAX: +1-540-855-7041

WWW.GENUINBIOTECH.COM



Copyright ©2024 Genuin Biotechnologies LLC

Western blotting analysis using anti-SRSF9 antibody (Cat#63578). SRSF9 expression in wild type (WT) and SRSF9 knockdown (KD) HSHC cells with 20 μ g of total cell lysates. Hsp90 α serves as a loading control. The blot was incubated with anti-SRSF9 antibody (Cat#63578, 1:5,000) and HRP-conjugated goat anti-mouse secondary antibody (Cat#101, 1:20,000) respectively. Image was developed using NaQ™ ECL Substrate Kit (Cat#716).