

KD-Validated Anti-GIPC1 Mouse Monoclonal Antibody



Catalog #: 63585

Aliases

GIPC1; GIPC PDZ Domain Containing Family Member 1; TIP-2; GIPC; GLUT1CBP; SYNECTIN; RGS19IP1; Hs.6454; C19orf3; SEMCAP; NIP; Regulator Of G-Protein Signalling 19 Interacting Protein 1; PDZ Domain-Containing Protein GIPC1; GAIP C-Terminus-Interacting Protein; RGS-GAIP-Interacting Protein; RGS19-Interacting Protein 1; Tax Interaction Protein 2; GIPC PDZ Domain Containing Family, Member 1; IGF-1 Receptor Interacting Protein 1; Chromosome 19 Open Reading Frame 3; GLUT1 C-Terminal Binding Protein; SYNECTIIN; Synectin; IIP-1; OPDM2

Background

Gene Name: GIPC1

NCBI Gene Entry: [10755](#)

UniProt Entry: [O14908](#)

Application Information

Molecular Weight: Predicted, 36 kDa; observed, 38 kDa

Clonality: Mouse monoclonal antibody

Clone ID: 24GB6645

Species Reactivity: Human, mouse, rat

Applications Tested: Western blotting (WB), flow cytometry (FCM), immunocytochemistry (IC)

Immunogen

Recombinant protein of human GIPC1

Isotype

Mouse IgG1

Storage Buffer

Supplied in PBS (pH 7.4) containing 50% glycerol, and 0.02% sodium azide.

Storage

Store at -20 °C for one year.

Recommended Dilutions

Western Blotting (WB): 1:1,000-1:5,000

Flow Cytometry (FCM): 1:2,000

SUPPORT

SUPPORT@GENUINBIOTECH.COM
TEL: +1-540-855-7041

ORDERS

SALES@GENUINBIOTECH.COM
FAX: +1-540-855-7041

WWW.GENUINBIOTECH.COM

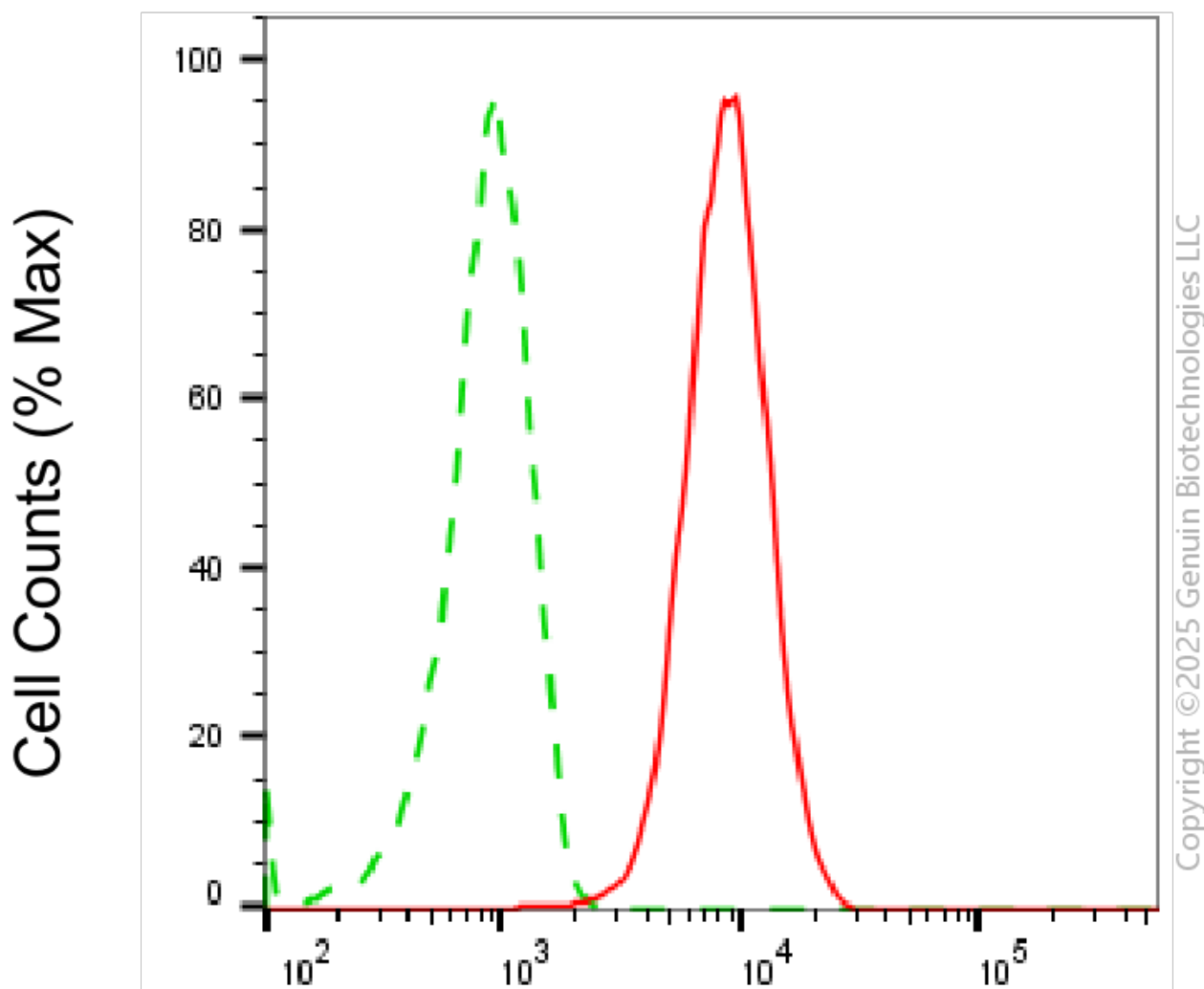
KD-Validated Anti-GIPC1 Mouse Monoclonal Antibody

PAGE 2

Immunocytochemistry (IC): 1:100-1:1,000

Note: This product is for research use only.

Validation Data



GIPC1-Alexa Fluor® 647

Flow cytometric analysis of GIPC1 expression in HepG2 cells using anti-GIPC1 antibody (Cat#63585, 1:2,000). Green, isotype control; red, GIPC1.

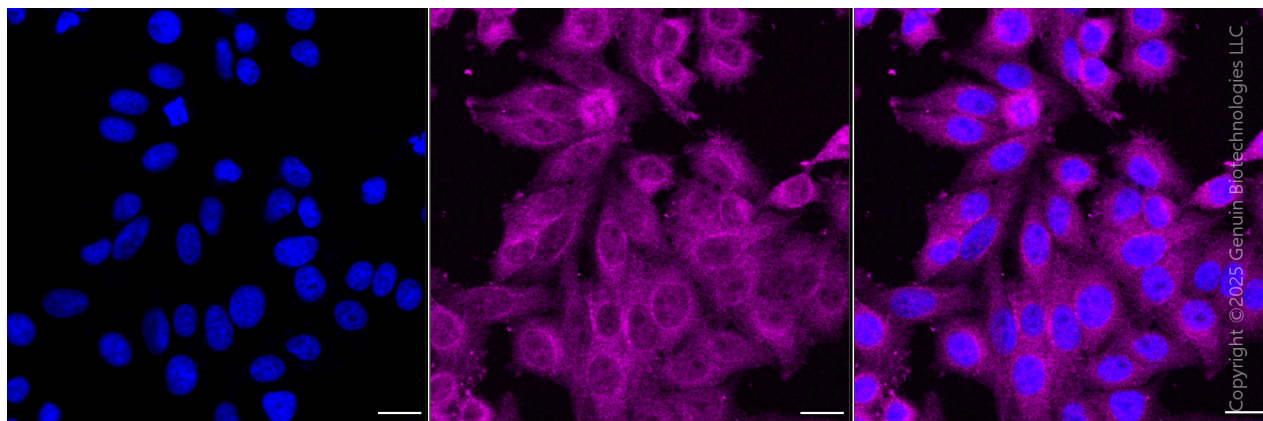
SUPPORT

SUPPORT@GENUINBIOTECH.COM
TEL: +1-540-855-7041

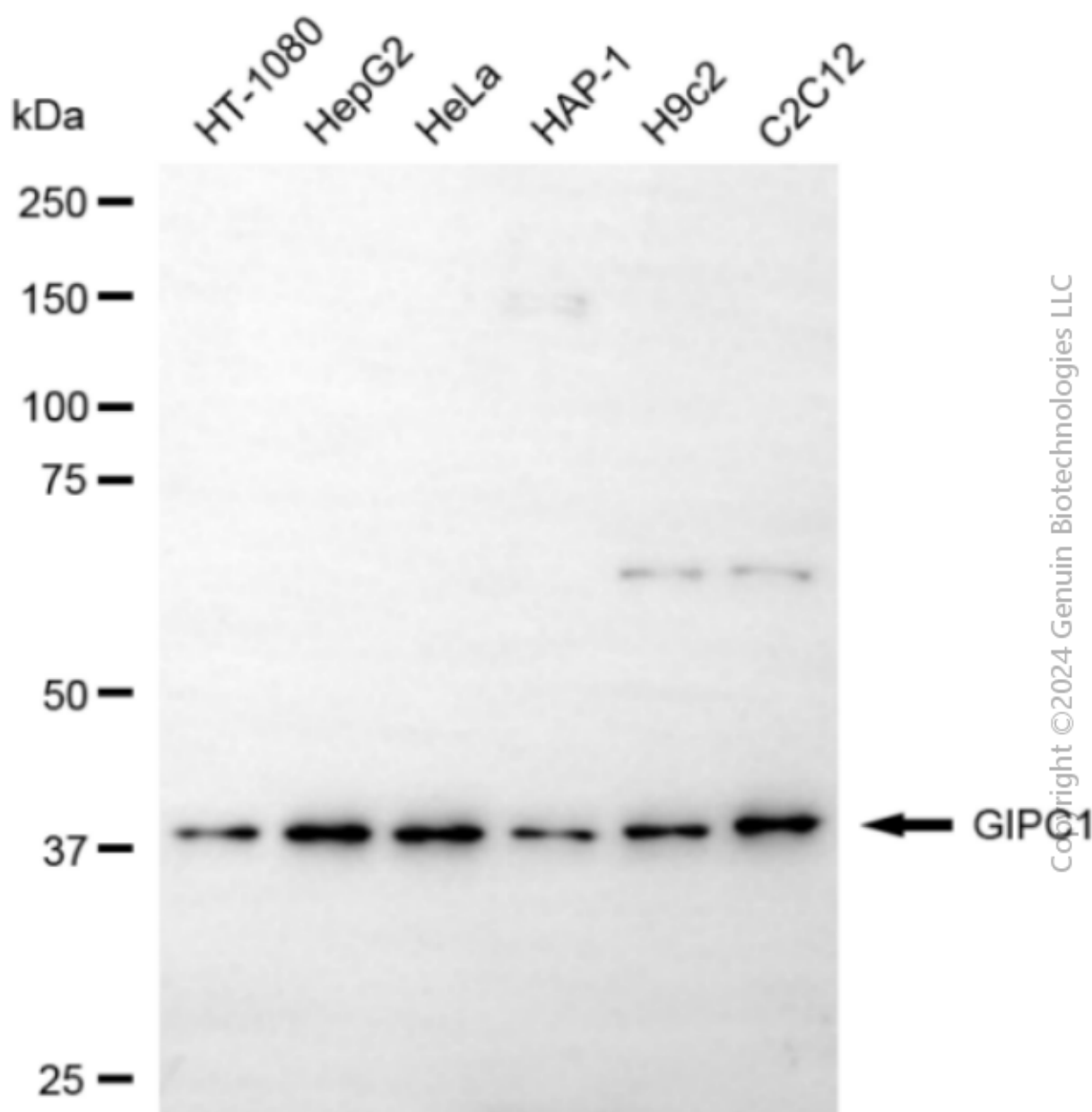
ORDERS

SALES@GENUINBIOTECH.COM
FAX: +1-540-855-7041

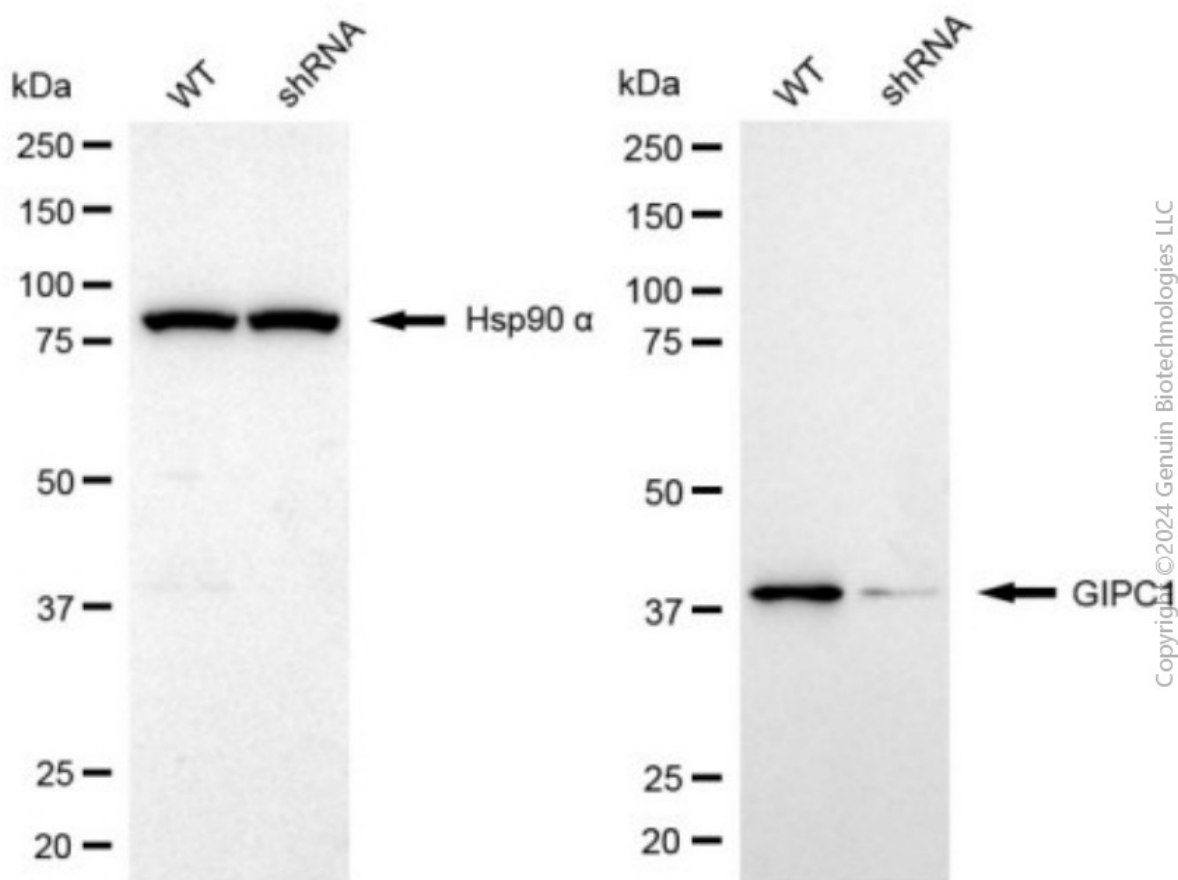
WWW.GENUINBIOTECH.COM



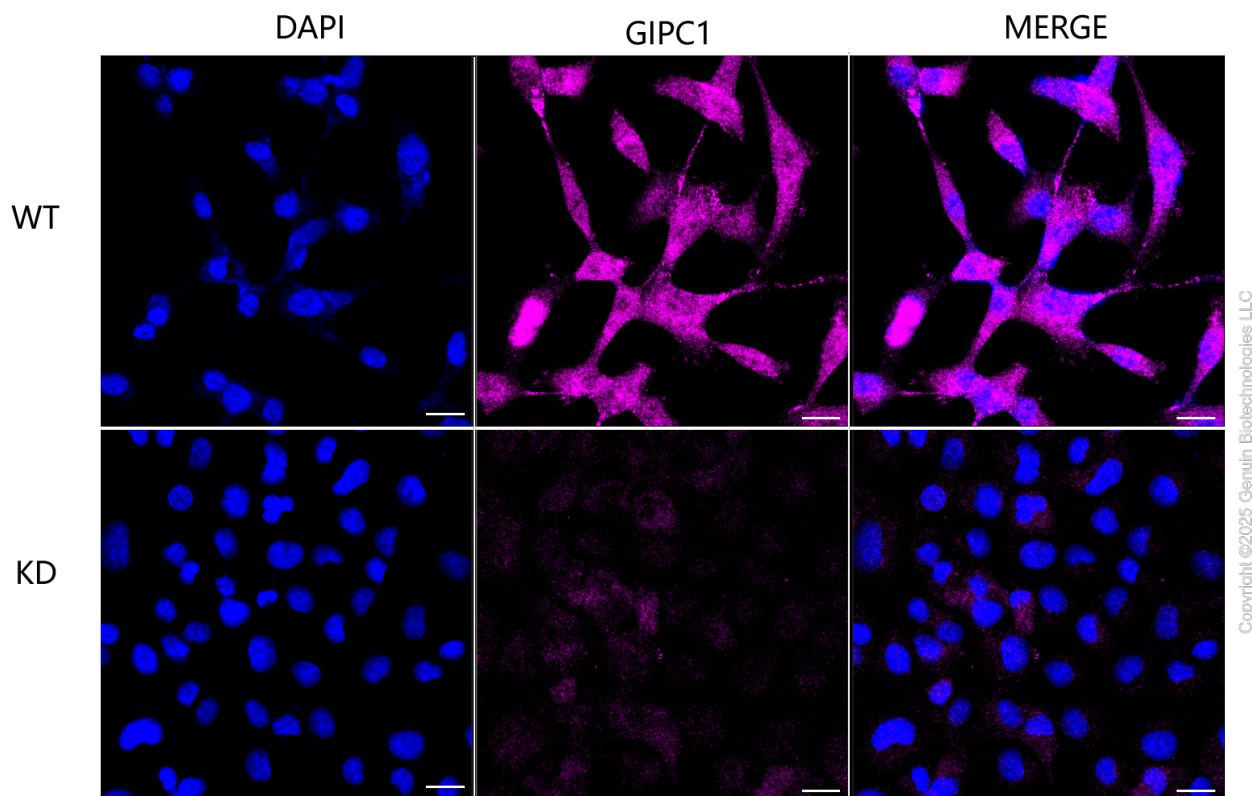
Immunocytochemical staining of HT-1080 cells using anti-GIPC1 antibody (Cat#63585, 1:1,000), Top panel: wild-type (WT); Bottom panel: GIPC1 shRNA knockdown (KD). Nuclei were stained blue with DAPI; GIPC1 was stained magenta with Alexa Fluor® 647. Scale bar, 20 μ m. Permeabilization: Triton.



Western blotting analysis using anti-GIPC1 antibody (Cat#63585). Total cell lysates (30 μ g) from various cell lines were loaded and separated by SDS-PAGE. The blot was incubated with anti-GIPC1 antibody (Cat#63585, 1:5,000) and HRP-conjugated goat anti-mouse secondary antibody (Cat#101, 1:20,000) respectively. Image was developed using NaQ™ ECL Substrate Kit (Cat#716).



Western blotting analysis using anti-GIPC1 antibody (Cat#63585). GIPC1 expression in wild type (WT) and GIPC1 shRNA knockdown (KD) HT-1080 cells with 20 µg of total cell lysates. Hsp90 α serves as a loading control. The blot was incubated with anti-GIPC1 antibody (Cat#63585, 1:5,000) and HRP-conjugated goat anti-mouse secondary antibody (Cat#101, 1:20,000) respectively. Image was developed using NaQ™ ECL Substrate Kit (Cat#716).



Immunocytochemical staining of HT-1080 cells using anti-GIPC1 antibody (Cat#63585, 1:1,000), Top panel: wild-type (WT); Bottom panel: GIPC1 shRNA knockdown (KD). Nuclei were stained blue with DAPI; GIPC1 was stained magenta with Alexa Fluor® 647. Scale bar, 20 μ m. Permeabilization: Triton.