

KD-Validated Anti-G protein subunit alpha q Recombinant Rabbit Monoclonal Antibody



Catalog #: 63616

Aliases

G Protein Subunit Alpha Q; GAQ; G-ALPHA-Q; Guanine Nucleotide Binding Protein (G Protein), Q Polypeptide; Guanine Nucleotide-Binding Protein G(Q) Subunit Alpha; Guanine Nucleotide-Binding Protein Alpha-Q; Epididymis Secretory Sperm Binding Protein; CMAL; CMC1; SWS

Background

Gene Name: GNAQ

NCBI Gene Entry: [2776](#)

UniProt Entry: [P50148](#)

Application Information

Molecular Weight: Predicted, 42 kDa, observed, 42 kDa

Clonality: Rabbit monoclonal antibody

Clone ID: 23GB1295

Species Reactivity: Human, mouse, rat

Applications Tested: Western blotting (WB), flow cytometry (FCM), immunocytochemistry (IC)

Immunogen

A synthesized peptide derived from human GNAQ

Isotype

Rabbit IgG

Storage Buffer

Supplied in PBS (pH 7.4) containing 50% glycerol, and 0.02% sodium azide.

Storage

Store at -20 °C for one year.

Recommended Dilutions

Western Blotting (WB): 1:1,000-1:5,000

Flow Cytometry (FCM): 1:2,000

Immunocytochemistry (IC): 1:100-1:1,000

SUPPORT

SUPPORT@GENUINBIOTECH.COM
TEL: +1-540-855-7041

ORDERS

SALES@GENUINBIOTECH.COM
FAX: +1-540-855-7041

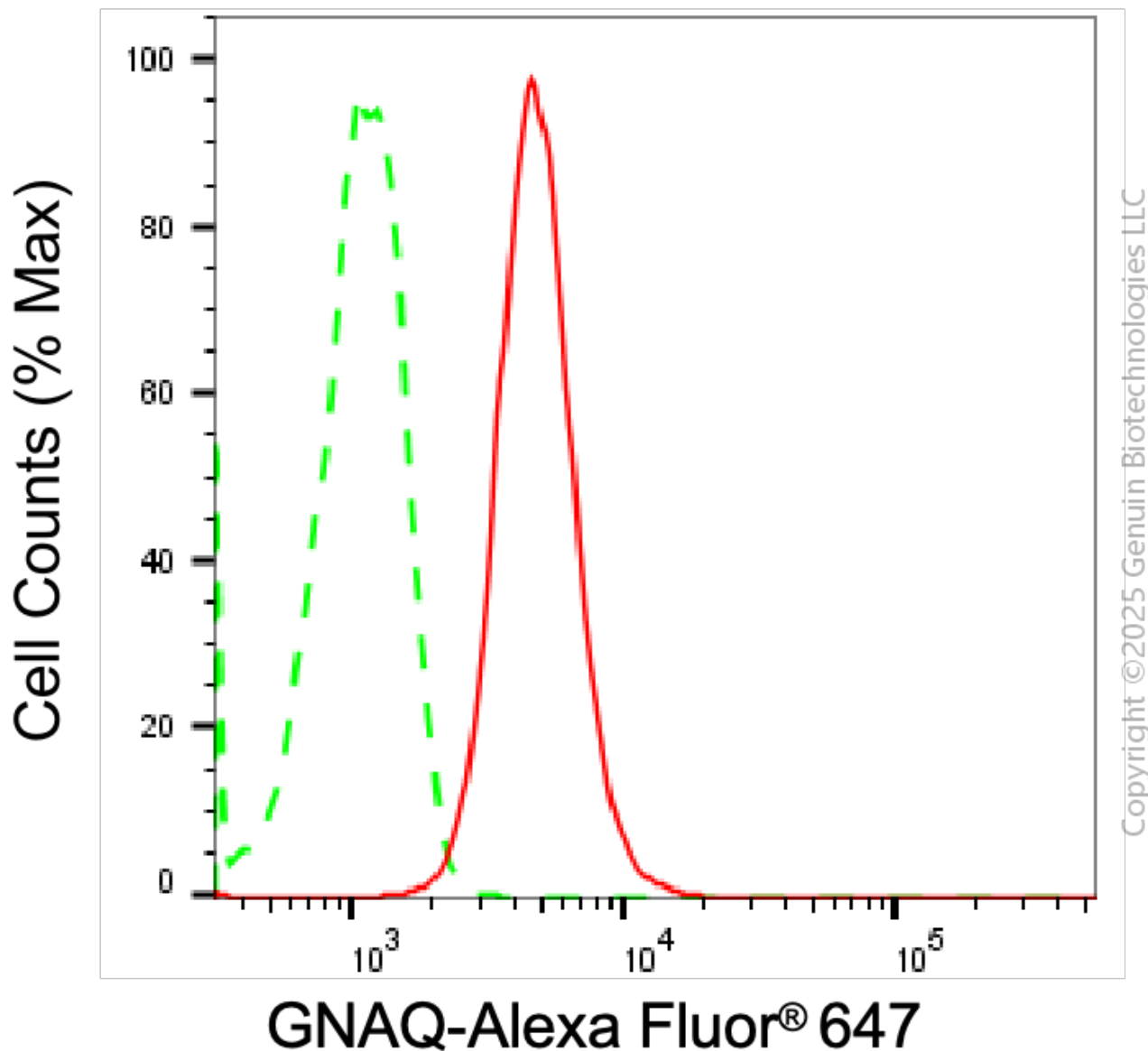
WWW.GENUINBIOTECH.COM

KD-Validated Anti-G protein subunit alpha q Recombinant Rabbit Monoclonal Antibody

PAGE 2

Note: This product is for research use only.

Validation Data



Flow cytometric analysis of GNAQ expression in C2C12 cells using anti-GNAQ antibody (Cat#63616, 1 μ g/2000). Green, isotype control; red, GNAQ.

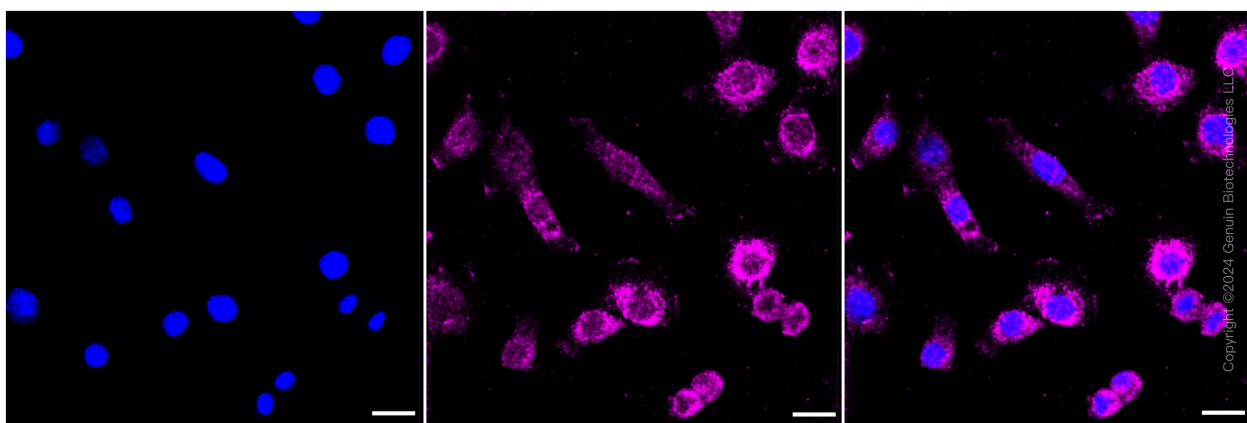
SUPPORT

SUPPORT@GENUINBIOTECH.COM
TEL: +1-540-855-7041

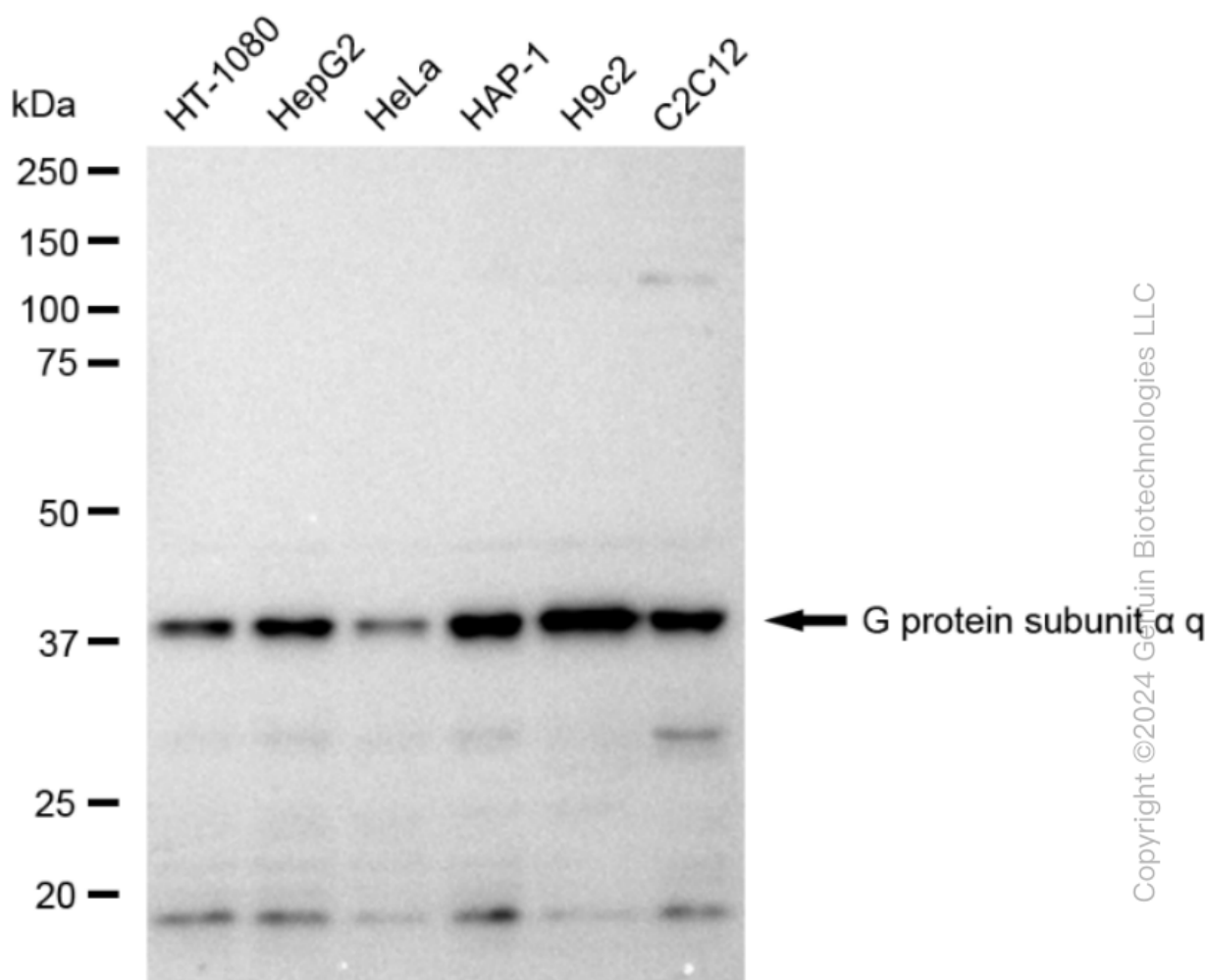
ORDERS

SALES@GENUINBIOTECH.COM
FAX: +1-540-855-7041

WWW.GENUINBIOTECH.COM



Immunocytochemical staining of C2C12 cells with G protein subunit alpha q antibody (Cat#63616, 1:1,000). Nuclei were stained blue with DAPI; G protein subunit alpha q was stained magenta with Alexa Fluor® 647. Images were taken using Leica stellaris 5. Protein abundance based on laser Intensity and smart gain: Medium. Scale bar: 20 μ m.

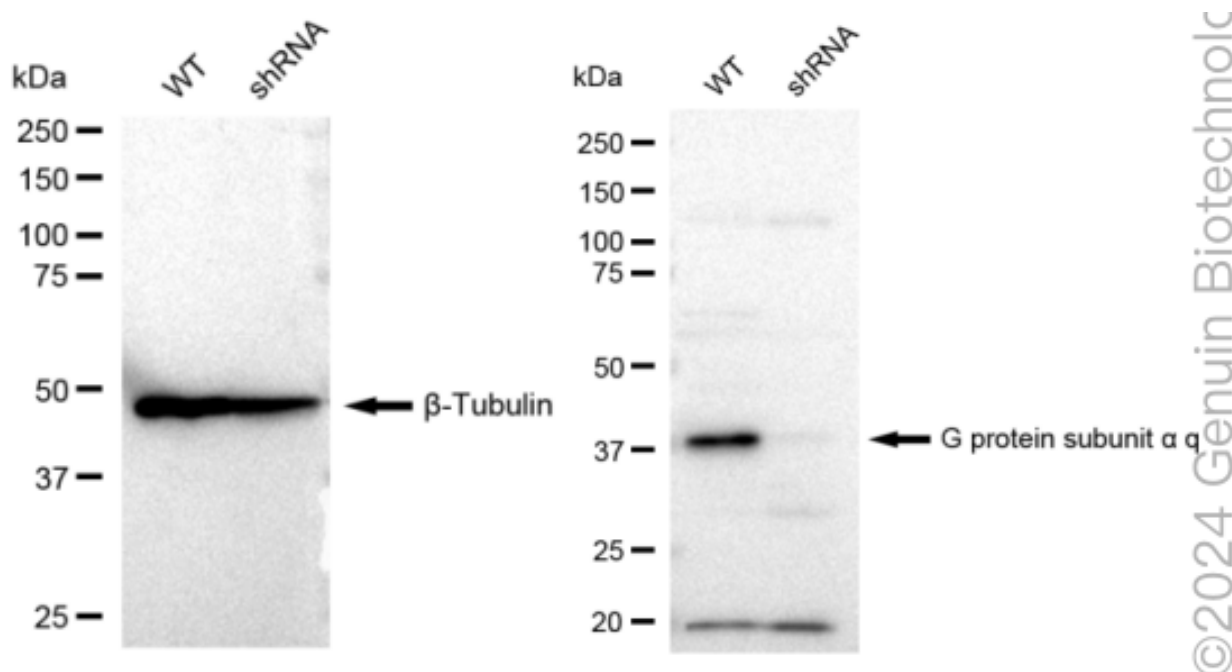


Western blotting analysis using anti-G protein subunit alpha q antibody (Cat#63616). Total cell

KD-Validated Anti-G protein subunit alpha q Recombinant Rabbit Monoclonal Antibody

PAGE 4

lysates (30 µg) from various cell lines were loaded and separated by SDS-PAGE. The blot was incubated with anti-G protein subunit alpha q antibody (Cat#63616, 1:5,000) and HRP-conjugated goat anti-rabbit secondary antibody (Cat#201, 1:20,000) respectively. Image was developed using FeQ™ ECL Substrate Kit (Cat#226).



Western blotting analysis using anti-G protein subunit alpha q antibody (Cat#63616). G protein subunit alpha q expression in wild type (WT) and G protein subunit alpha q shRNA knockdown (KD) HeLa cells with 30 µg of total cell lysates. β -Tubulin serves as a loading control. The blot was incubated with anti-G protein subunit alpha q antibody (Cat#63616, 1:5,000) and HRP-conjugated goat anti-rabbit secondary antibody (Cat#201, 1:20,000) respectively. Image was developed using FeQ™ ECL Substrate Kit (Cat#226).

SUPPORT

SUPPORT@GENUINBIOTECH.COM
TEL: +1-540-855-7041

ORDERS

SALES@GENUINBIOTECH.COM
FAX: +1-540-855-7041

WWW.GENUINBIOTECH.COM