

KD-Validated Anti-LTBR Mouse Monoclonal Antibody



Catalog #: 63649

Aliases

LTBR; Lymphotoxin Beta Receptor; TNFRSF3; TNFCR; TNF-R-III; TNFR2-RP; TNFR-RP; D12S370; Tumor Necrosis Factor Receptor Superfamily Member 3; Tumor Necrosis Factor Receptor 2-Related Protein; Tumor Necrosis Factor Receptor Type III; Tumor Necrosis Factor C Receptor; TNFR3; Lymphotoxin Beta Receptor (TNFR Superfamily, Member 3); TNFR Superfamily, Member 3; Lymphotoxin-Beta Receptor; Lymphotoxin B Receptor; LT-BETA-R; TNF-RIII; TNFR-III

Background

Gene Name: LTBR

NCBI Gene Entry: [4055](#)

UniProt Entry: [P36941](#)

Application Information

Molecular Weight: Predicted, 47 kDa; observed, 36 kDa

Clonality: Mouse monoclonal antibody

Clone ID: 24GB6730

Species Reactivity: Human, mouse, rat

Applications Tested: Western blotting (WB), immunocytochemistry (IC)

Immunogen

Recombinant protein of human LTBR

Isotype

Mouse IgG1

Storage Buffer

Supplied in PBS (pH 7.4) containing 50% glycerol, and 0.02% sodium azide.

Storage

Store at -20 °C for one year.

Recommended Dilutions

Western Blotting (WB): 1:200-1:1,000

Immunocytochemistry (IC): 1:100-1:1,000

SUPPORT

SUPPORT@GENUINBIOTECH.COM
TEL: +1-540-855-7041

ORDERS

SALES@GENUINBIOTECH.COM
FAX: +1-540-855-7041

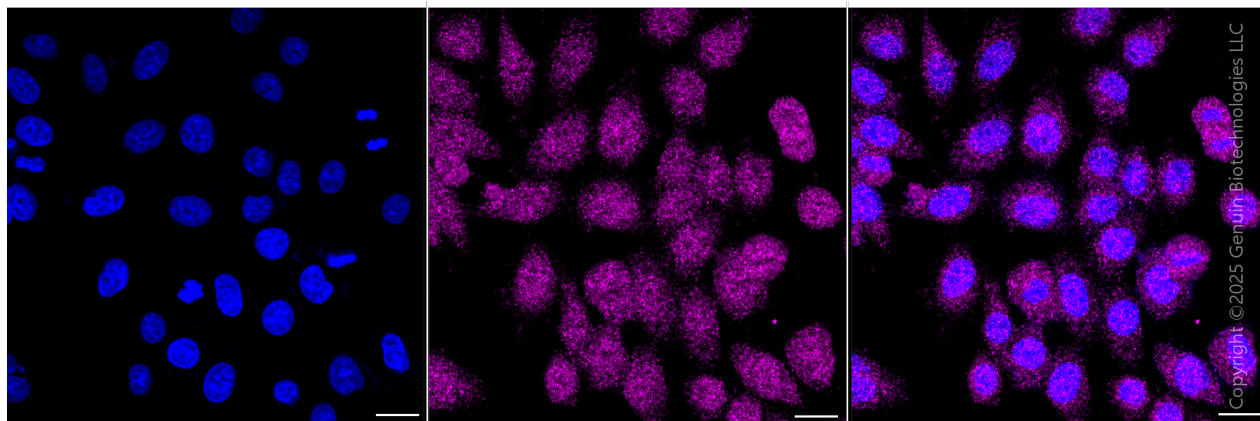
WWW.GENUINBIOTECH.COM

KD-Validated Anti-LTBR Mouse Monoclonal Antibody

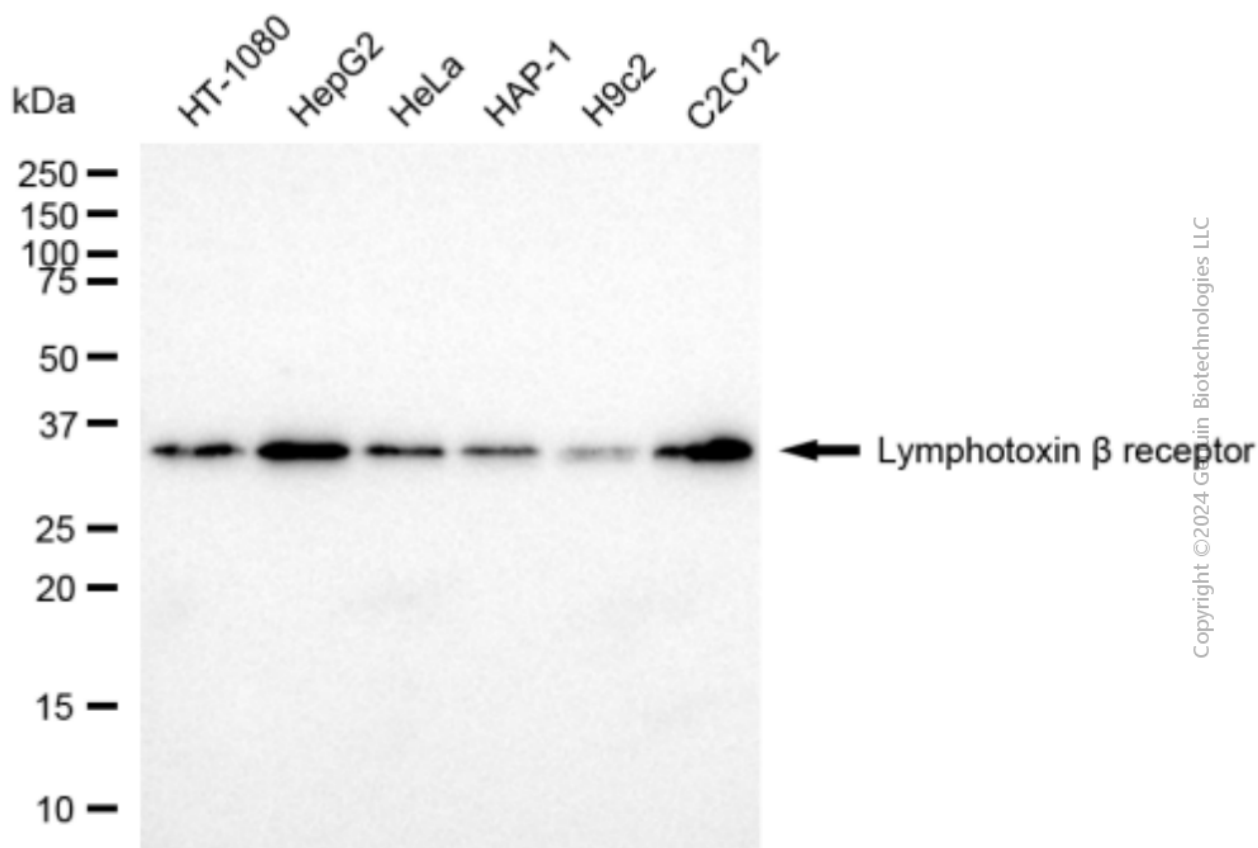
PAGE 2

Note: This product is for research use only.

Validation Data



Immunocytochemical staining of HepG2 cells with anti-Lymphotoxin beta receptor antibody (Cat#63649, 1:1,000). Nuclei were stained blue with DAPI; Lymphotoxin beta receptor was stained magenta with Alexa Fluor® 647. Images were taken using Leica stellaris 5. Protein abundance based on laser Intensity and smart gain: Low. Scale bar, 20 μ m.



Western blotting analysis using anti-lymphotoxin beta receptor antibody (Cat#63649). Total cell

SUPPORT

SUPPORT@GENUINBIOTECH.COM
TEL: +1-540-855-7041

ORDERS

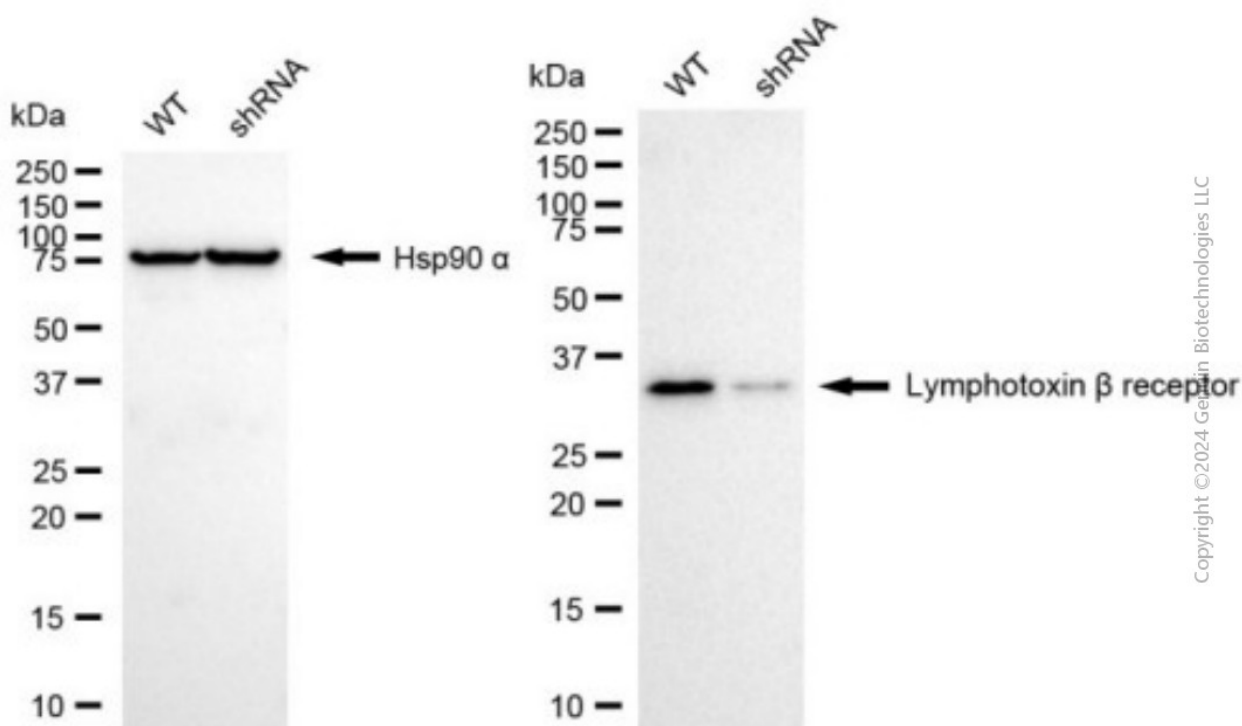
SALES@GENUINBIOTECH.COM
FAX: +1-540-855-7041

WWW.GENUINBIOTECH.COM

KD-Validated Anti-LTBR Mouse Monoclonal Antibody

PAGE 3

lysates (30 µg) from various cell lines were loaded and separated by SDS-PAGE. The blot was incubated with anti-lymphotoxin beta receptor antibody (Cat#63649, 1:1,000) and HRP-conjugated goat anti-mouse secondary antibody (Cat#101, 1:20,000) respectively. Image was developed using NaQ™ ECL Substrate Kit (Cat#716).



Copyright ©2024 Genuin Biotechnologies LLC

Western blotting analysis using anti-lymphotoxin beta receptor antibody (Cat#63649). Lymphotoxin beta receptor expression in wild type (WT) and lymphotoxin beta receptor (LTBR) shRNA knockdown (KD) HeLa cells with 20 µg of total cell lysates. Hsp90 α serves as a loading control. The blot was incubated with anti-lymphotoxin beta receptor antibody (Cat#63649, 1:1,000) and HRP-conjugated goat anti-mouse secondary antibody (Cat#101, 1:20,000) respectively. Image was developed using NaQ™ ECL Substrate Kit (Cat#716).

SUPPORT

SUPPORT@GENUINBIOTECH.COM
TEL: +1-540-855-7041

ORDERS

SALES@GENUINBIOTECH.COM
FAX: +1-540-855-7041

WWW.GENUINBIOTECH.COM