

KD-Validated Anti-ATIC Mouse Monoclonal Antibody



Catalog #: 63653

Aliases

ATIC; 5-Aminoimidazole-4-Carboxamide Ribonucleotide Formyltransferase/IMP Cyclohydrolase; PURH; IMPCHASE; AICARFT; Phosphoribosylaminoimidazolecarboxamide Formyltransferase/IMP Cyclohydrolase; AICAR Transformylase/Inosine Monophosphate Cyclohydrolase; Bifunctional Purine Biosynthesis Protein ATIC; 5-Aminoimidazole-4-Carboxamide-1-Beta-D-Ribonucleotide Transformylase/Inosinase; AICAR Formyltransferase/IMP Cyclohydrolase Bifunctional Enzyme; Epididymis Secretory Sperm Binding Protein Li 70p; Bifunctional Purine Biosynthesis Protein PURH; AICARFT/IMPCHASE; HEL-S-70p; AICAR

Background

Gene Name: ATIC

NCBI Gene Entry: [471](#)

UniProt Entry: [P31939](#)

Application Information

Molecular Weight: Predicted, 65 kDa; observed, 65 kDa

Clonality: Mouse monoclonal antibody

Clone ID: 24GB6745

Species Reactivity: Human, mouse, rat

Applications Tested: Western blotting (WB), flow cytometry (FCM), immunocytochemistry (IC)

Immunogen

Recombinant protein of human ATIC

Isotype

Mouse IgG1

Storage Buffer

Supplied in PBS (pH 7.4) containing 50% glycerol, and 0.02% sodium azide.

Storage

Store at -20 °C for one year.

Recommended Dilutions

Western Blotting (WB): 1:1,000-1:5,000

Flow Cytometry (FCM): 1:2,000

SUPPORT

SUPPORT@GENUINBIOTECH.COM
TEL: +1-540-855-7041

ORDERS

SALES@GENUINBIOTECH.COM
FAX: +1-540-855-7041

WWW.GENUINBIOTECH.COM

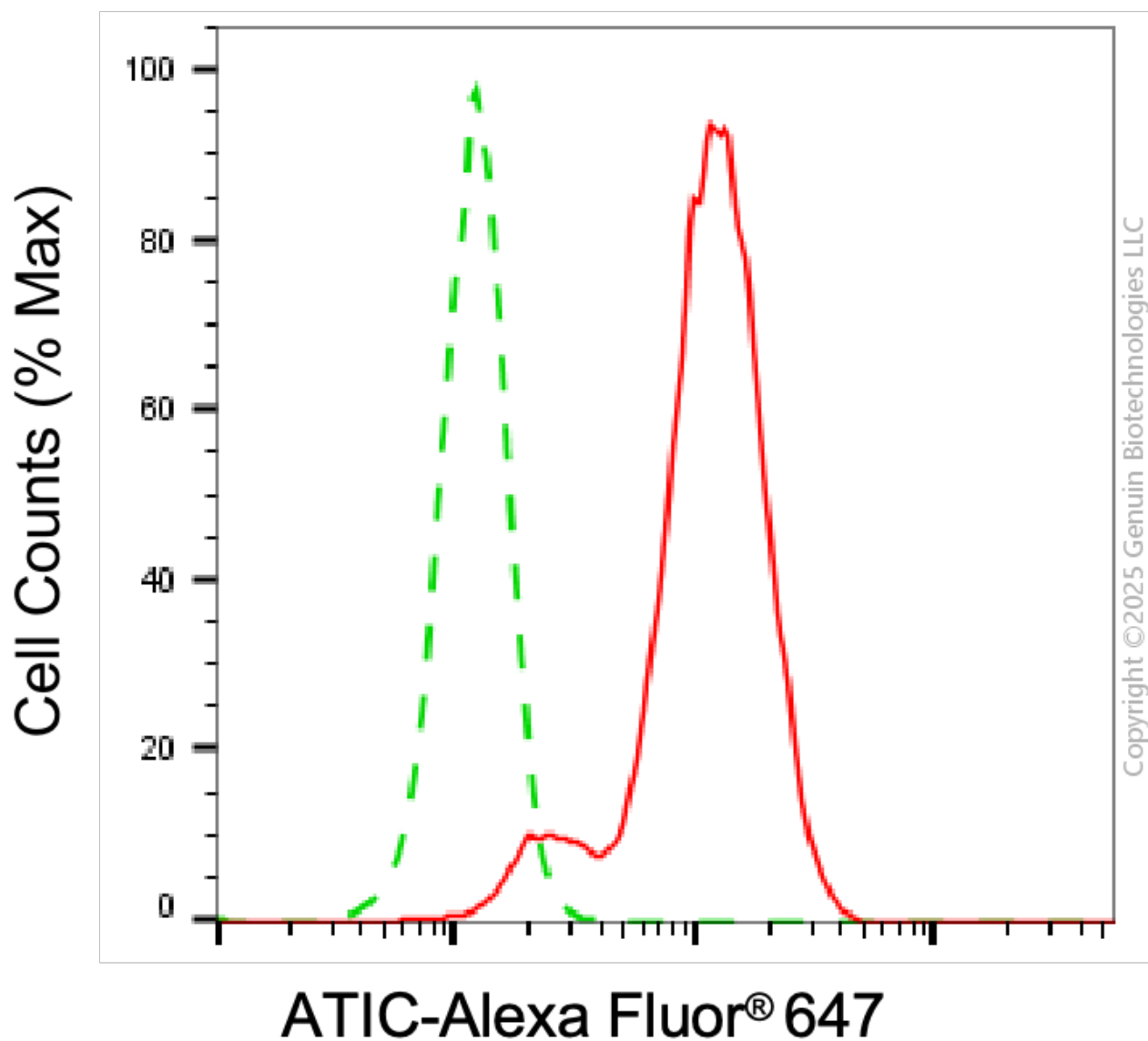
KD-Validated Anti-ATIC Mouse Monoclonal Antibody

PAGE 2

Immunocytochemistry (IC): 1:100-1:1,000

Note: This product is for research use only.

Validation Data



Flow cytometric analysis of ATIC expression in C2C12 cells using anti-ATIC antibody (Cat#63653, 1:2,000). Green, isotype control; red, ATIC.

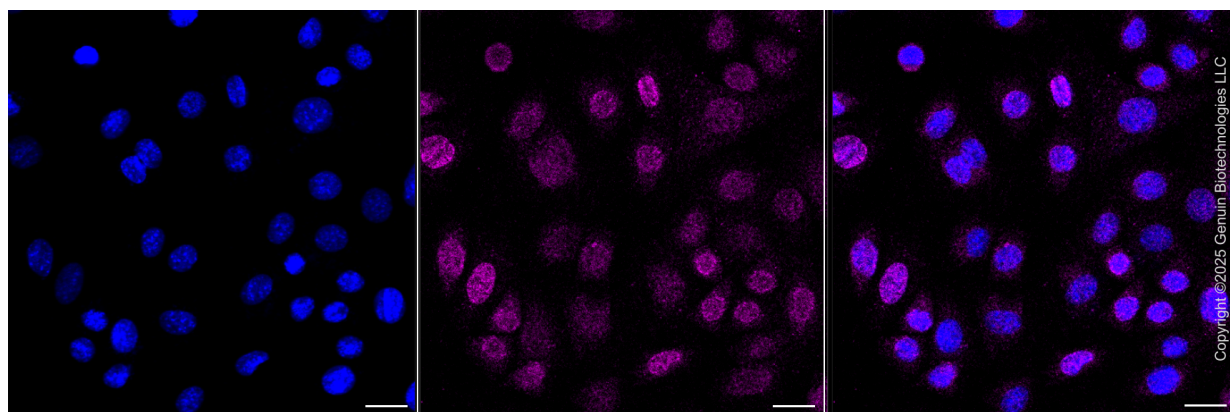
SUPPORT

SUPPORT@GENUINBIOTECH.COM
TEL: +1-540-855-7041

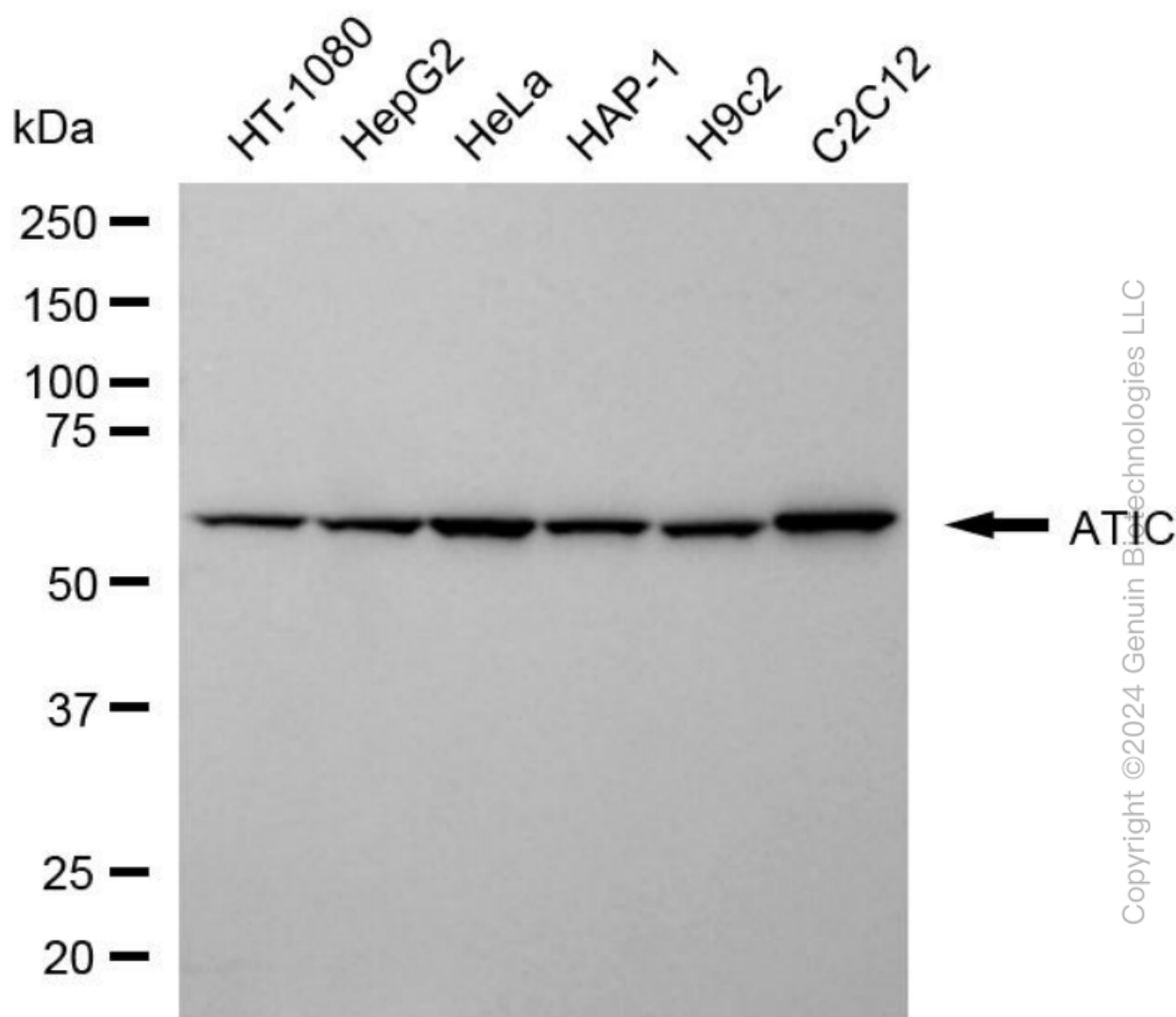
ORDERS

SALES@GENUINBIOTECH.COM
FAX: +1-540-855-7041

WWW.GENUINBIOTECH.COM



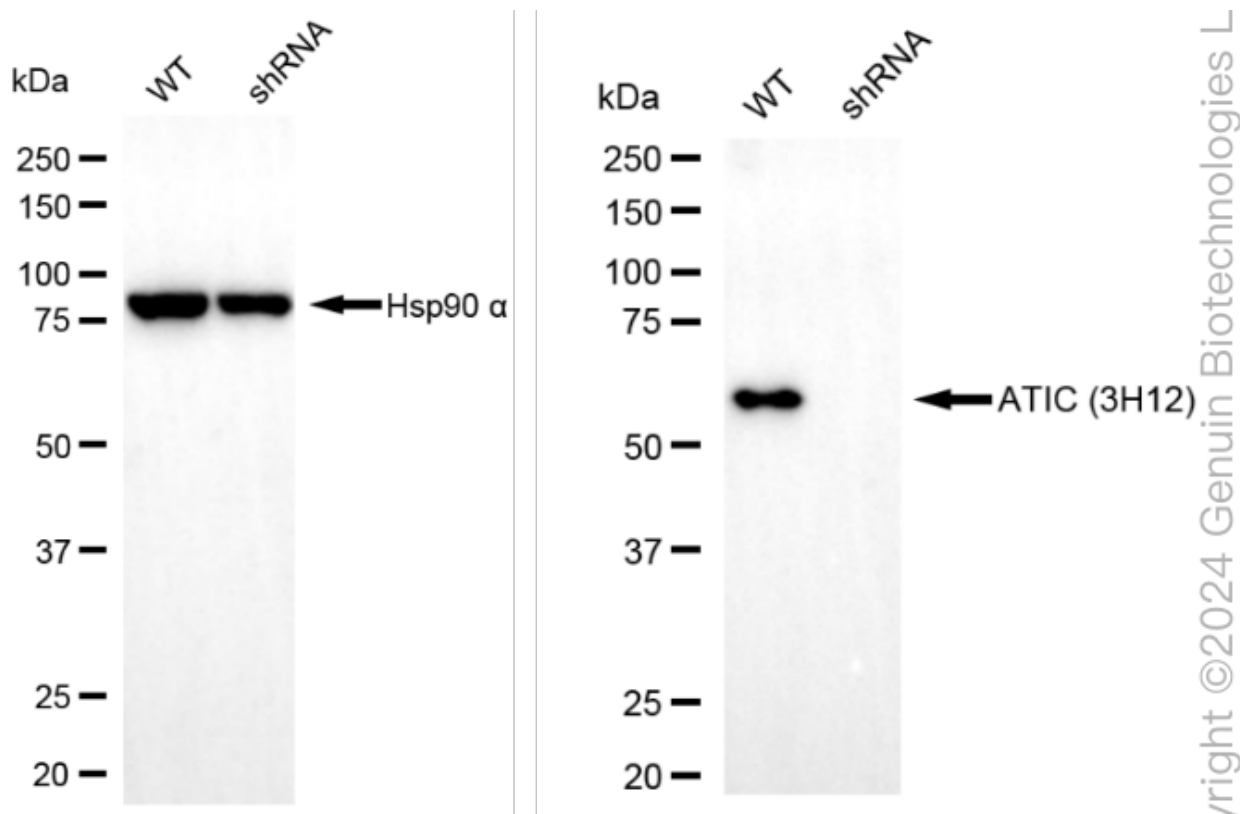
Immunocytochemical staining of C2C12 cells with anti-ATIC antibody (Cat#63653, 1:1,000) . Nuclei were stained blue with DAPI; ATIC was stained magenta with Alexa Fluor® 647. Images were taken using Leica stellaris 5. Protein abundance based on laser Intensity and smart gain: Low. Scale bar, 20 μ m.



KD-Validated Anti-ATIC Mouse Monoclonal Antibody

PAGE 4

Western blotting analysis using anti-ATIC antibody (Cat#63653). Total cell lysates (30 μ g) from various cell lines were loaded and separated by SDS-PAGE. The blot was incubated with anti-ATIC antibody (Cat#63653, 1:5,000) and HRP-conjugated goat anti-mouse secondary antibody (Cat#101, 1:20,000) respectively. Image was developed using NaQ™ ECL Substrate Kit (Cat#716).



Western blotting analysis using anti-ATIC antibody (Cat#63653). ATIC expression in wild-type (WT) and ATIC shRNA knockdown (KD) HeLa cells with 20 μ g of total cell lysates. Hsp90 α serves as a loading control. The blot was incubated with anti-ATIC antibody (Cat#63653, 1:5,000) and HRP-conjugated goat anti-mouse secondary antibody (Cat#101, 1:20,000) respectively. Image was developed using NaQ™ ECL Substrate Kit (Cat#716).

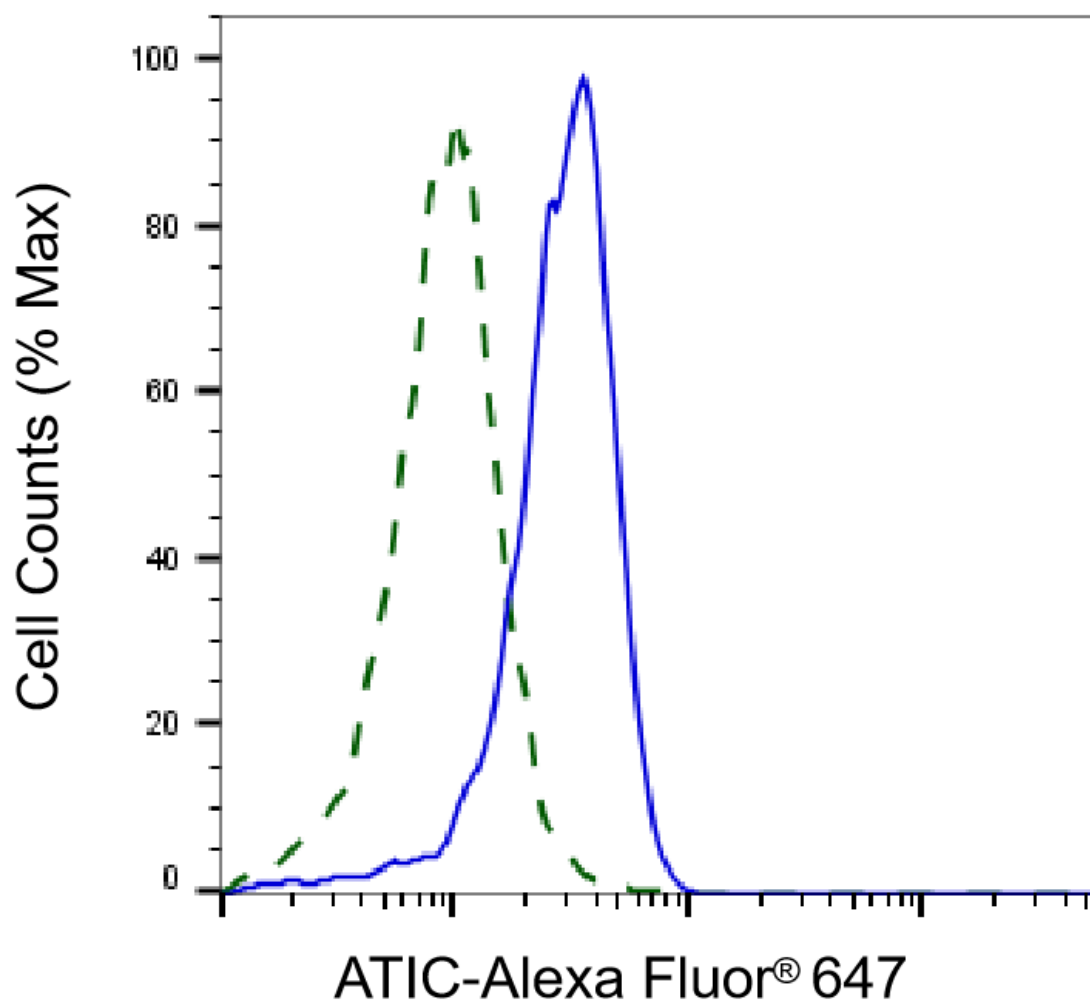
SUPPORT

SUPPORT@GENUINBIOTECH.COM
TEL: +1-540-855-7041

ORDERS

SALES@GENUINBIOTECH.COM
FAX: +1-540-855-7041

WWW.GENUINBIOTECH.COM



Copyright ©2025 Genuin Biotechnologies LLC

Validation of ATIC knockdown using flow cytometry. Wild-type(WT, Blue) and knockdown(KD, Green) HeLa cells were stained with anti-ATIC antibody (Cat#63653, 1:2,000) and analyzed using BD flow cytometer.