

KD-Validated Anti-HARS1 Mouse Monoclonal Antibody



Catalog #: 63655

Aliases

HARS1; Histidyl-TRNA Synthetase 1; HisRS; HARS; Histidine--TRNA Ligase, Cytoplasmic; Histidyl-TRNA Synthetase; EC 6.1.1.21; USH3B; HRS; Histidine TRNA Ligase 1, Cytoplasmic; Histidine Translase; Usher Syndrome 3B; Jo-1 Antigen; Jo-1 Antigen; CMT2W

Background

Gene Name: HARS1

NCBI Gene Entry: [3035](#)

UniProt Entry: [P12081](#)

Application Information

Molecular Weight: Predicted, 57 kDa; observed, 50 kDa

Clonality: Mouse monoclonal antibody

Clone ID: 24GB6755

Species Reactivity: Human

Applications Tested: Western blotting (WB), flow cytometry (FCM), immunocytochemistry (IC)

Immunogen

Recombinant protein of human HARS

Isotype

Mouse IgG1

Storage Buffer

Supplied in PBS (pH 7.4) containing 50% glycerol, and 0.02% sodium azide.

Storage

Store at -20 °C for one year.

Recommended Dilutions

Western Blotting (WB): 1:1,000-1:5,000

Flow Cytometry (FCM): 1:2,000

Immunocytochemistry (IC): 1:100-1:1,000

Note: This product is for research use only.

SUPPORT

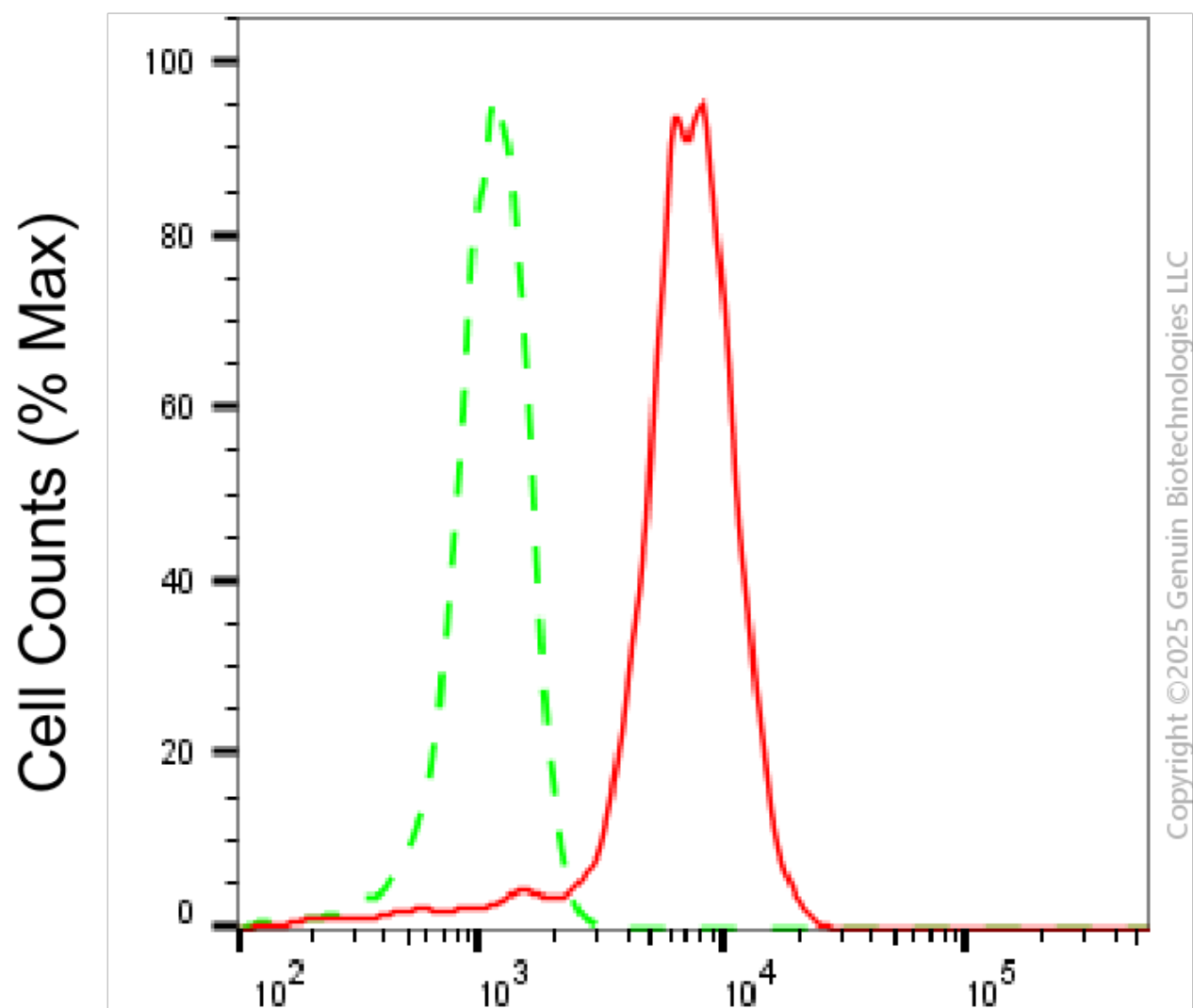
SUPPORT@GENUINBIOTECH.COM
TEL: +1-540-855-7041

ORDERS

SALES@GENUINBIOTECH.COM
FAX: +1-540-855-7041

WWW.GENUINBIOTECH.COM

Validation Data



HARS1-Alexa Fluor® 647

Flow cytometric analysis of HARS1 expression in HepG2 cells using anti-HARS1 antibody (Cat#63655, 1:2,000). Green, isotype control; red, HARS1.

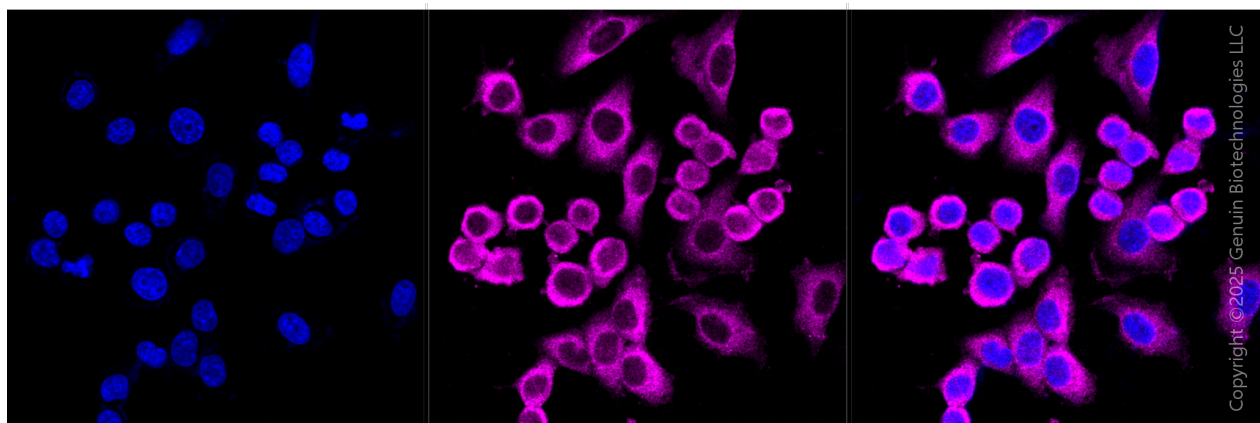
SUPPORT

SUPPORT@GENUINBIOTECH.COM
TEL: +1-540-855-7041

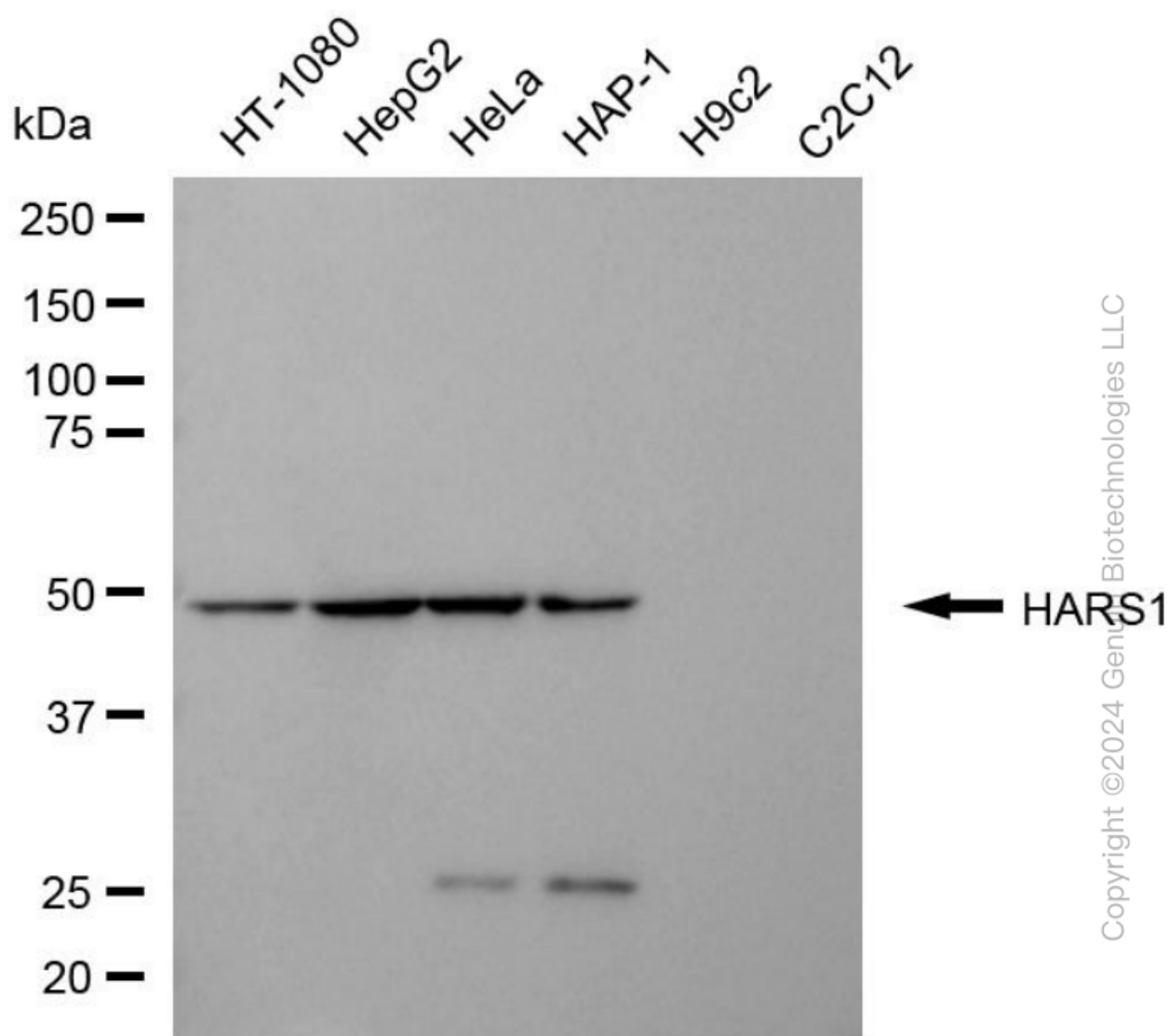
ORDERS

SALES@GENUINBIOTECH.COM
FAX: +1-540-855-7041

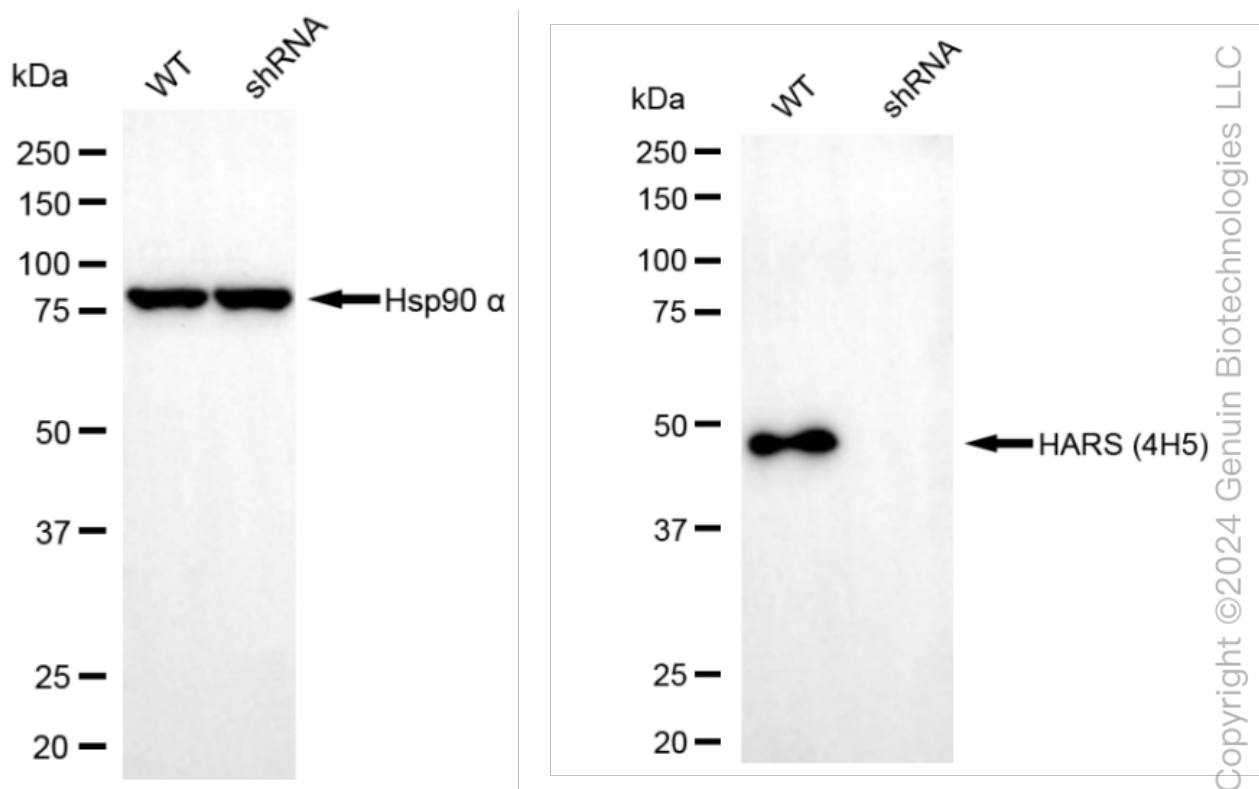
WWW.GENUINBIOTECH.COM



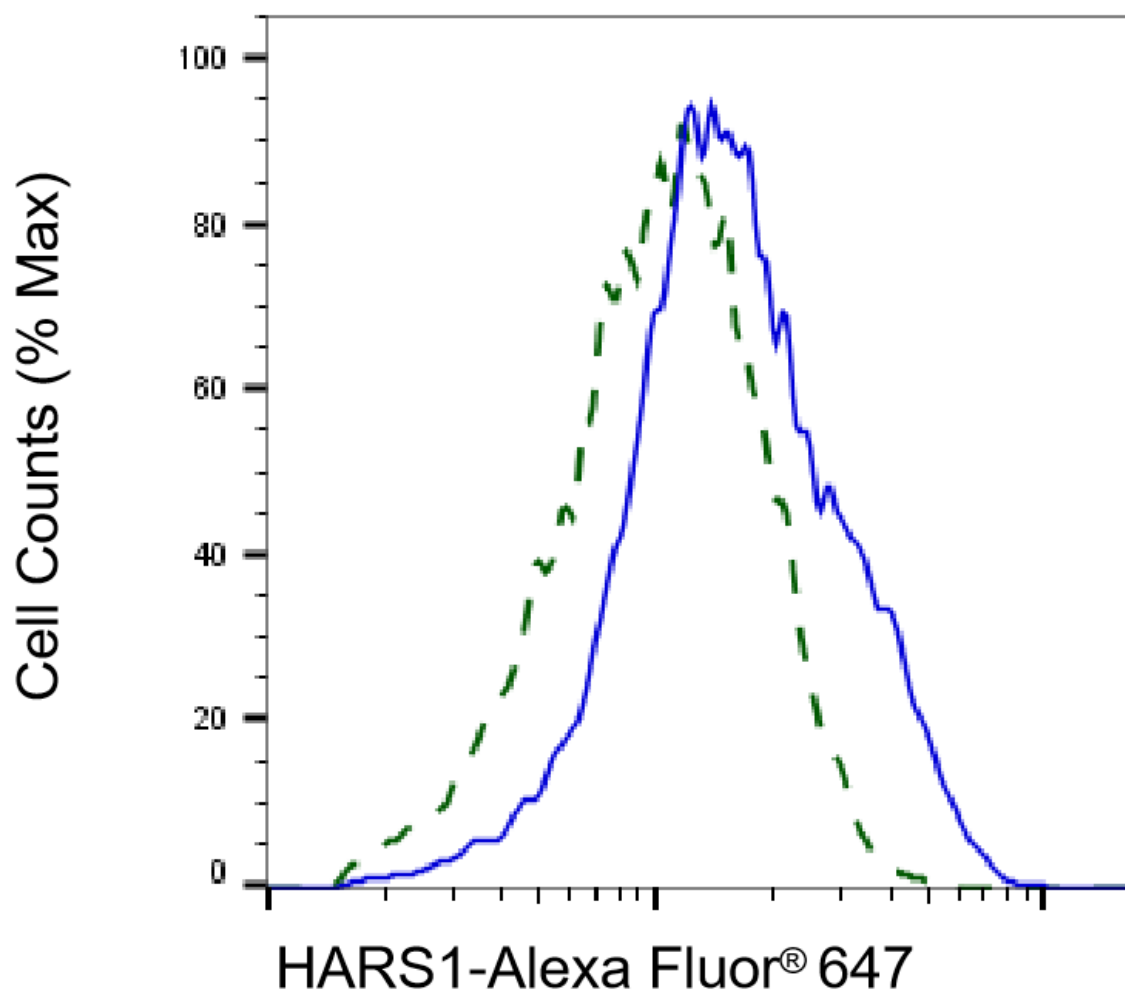
Immunocytochemical staining of HepG2 cells with anti-HARS1 antibody (Cat#63655, 1:1,000) . Nuclei were stained blue with DAPI; HARS1 was stained magenta with Alexa Fluor® 647. Images were taken using Leica stellaris 5. Protein abundance based on laser Intensity and smart gain: Medium. Scale bar, 20 μ m.



Western blotting analysis using anti-HARS1 antibody (Cat#63655). Total cell lysates (30 µg) from various cell lines were loaded and separated by SDS-PAGE. The blot was incubated with anti-HARS1 antibody (Cat#63655, 1:5,000) and HRP-conjugated goat anti-mouse secondary antibody (Cat#101, 1:20,000) respectively. Image was developed using NaQ™ ECL Substrate Kit (Cat#716).

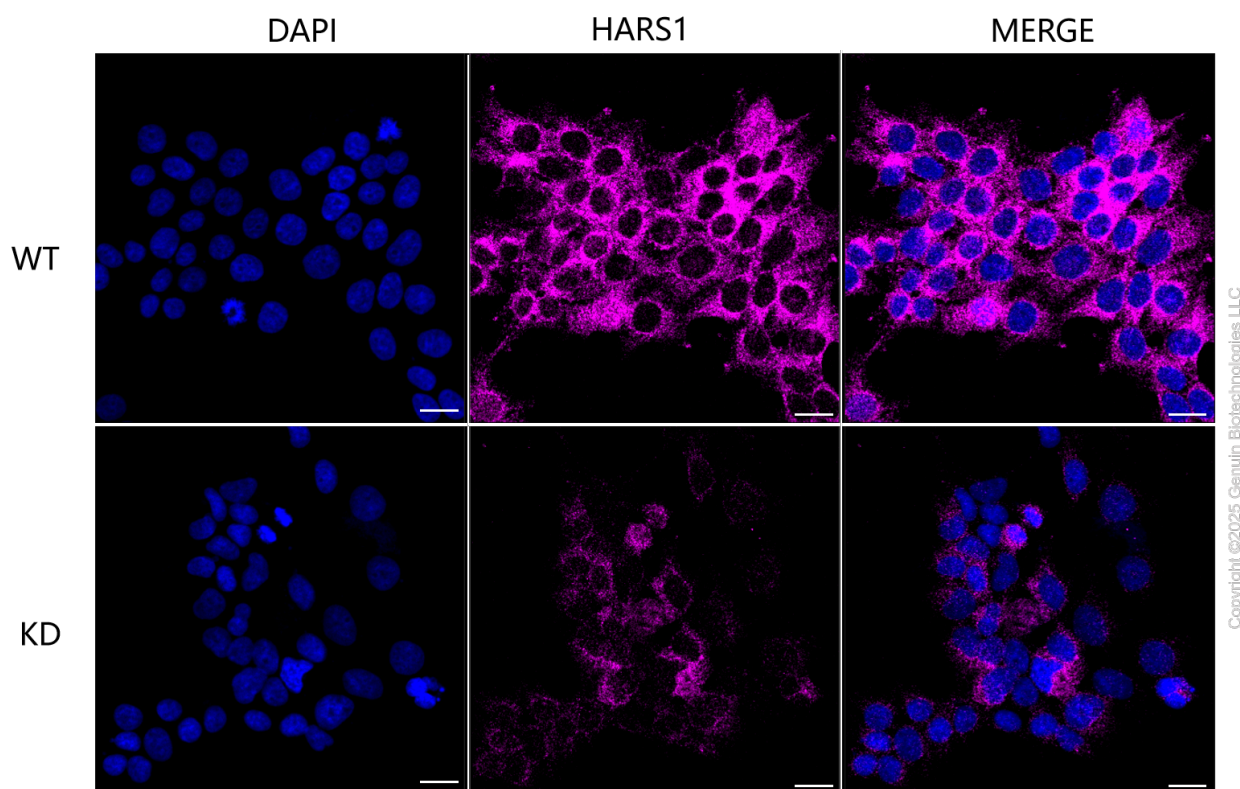


Western blotting analysis using anti-HARS1 antibody (Cat#63655). HARS1 expression in wild-type (WT) and HARS1 shRNA knockdown (KD) HeLa cells with 20 μ g of total cell lysates. Hsp90 α serves as a loading control. The blot was incubated with anti-HARS1 antibody (Cat#63655, 1:5,000) and HRP-conjugated goat anti-mouse secondary antibody (Cat#101, 1:20,000) respectively. Image was developed using NaQ™ ECL Substrate Kit (Cat#716).



Copyright ©2025 Genuin Biotechnologies LLC

Validation of HARS1 knockdown using flow cytometry. Wild-type(WT, Blue) and knockdown(KD, Green) HeLa cells were stained with anti-HARS1 antibody (Cat#63655, 1:2,000) and analyzed using BD flow cytometer.



Immunocytochemical staining of HeLa cells using anti-HARS1 antibody (Cat#63655, 1:1,000), Top panel: wild-type (WT); Bottom panel: HARS1 shRNA knockdown (KD). Nuclei were stained blue with DAPI; HARS1 was stained magenta with Alexa Fluor® 647. Scale bar, 20 μ m. Permeabilization: Triton.