

KD-Validated Anti-AKR1B1 Mouse Monoclonal Antibody



Catalog #: 63659

Aliases

AKR1B1; Aldo-Keto Reductase Family 1 Member B; AR; Aldose Reductase; ALDR1; Aldo-Keto Reductase Family 1 Member B1; EC 1.1.1.21; ALR2; Aldo-Keto Reductase Family 1, Member B1 (Aldose Reductase); Lii5-2 CTCL Tumor Antigen; Low Km Aldose Reductase; Aldehyde Reductase 1; Aldehyde Reductase; EC 1.1.1.300; EC 1.1.1.372; EC 1.1.1.54; EC 1.1.1; ADR

Background

Gene Name: AKR1B1

NCBI Gene Entry: [231](#)

UniProt Entry: [P15121](#)

Application Information

Molecular Weight: Predicted, 36 kDa; observed, 36 kDa

Clonality: Mouse monoclonal antibody

Clone ID: 24GB6775

Species Reactivity: Human, mouse, rat

Applications Tested: Western blotting (WB), flow cytometry (FCM), immunocytochemistry (IC)

Immunogen

Recombinant protein of human AKR1B1

Isotype

Mouse IgG1

Storage Buffer

Supplied in PBS (pH 7.4) containing 50% glycerol, and 0.02% sodium azide.

Storage

Store at -20 °C for one year.

Recommended Dilutions

Western Blotting (WB): 1:1,000-1:5,000

Flow Cytometry (FCM): 1:2,000

Immunocytochemistry (IC): 1:100-1:1,000

SUPPORT

SUPPORT@GENUINBIOTECH.COM
TEL: +1-540-855-7041

ORDERS

SALES@GENUINBIOTECH.COM
FAX: +1-540-855-7041

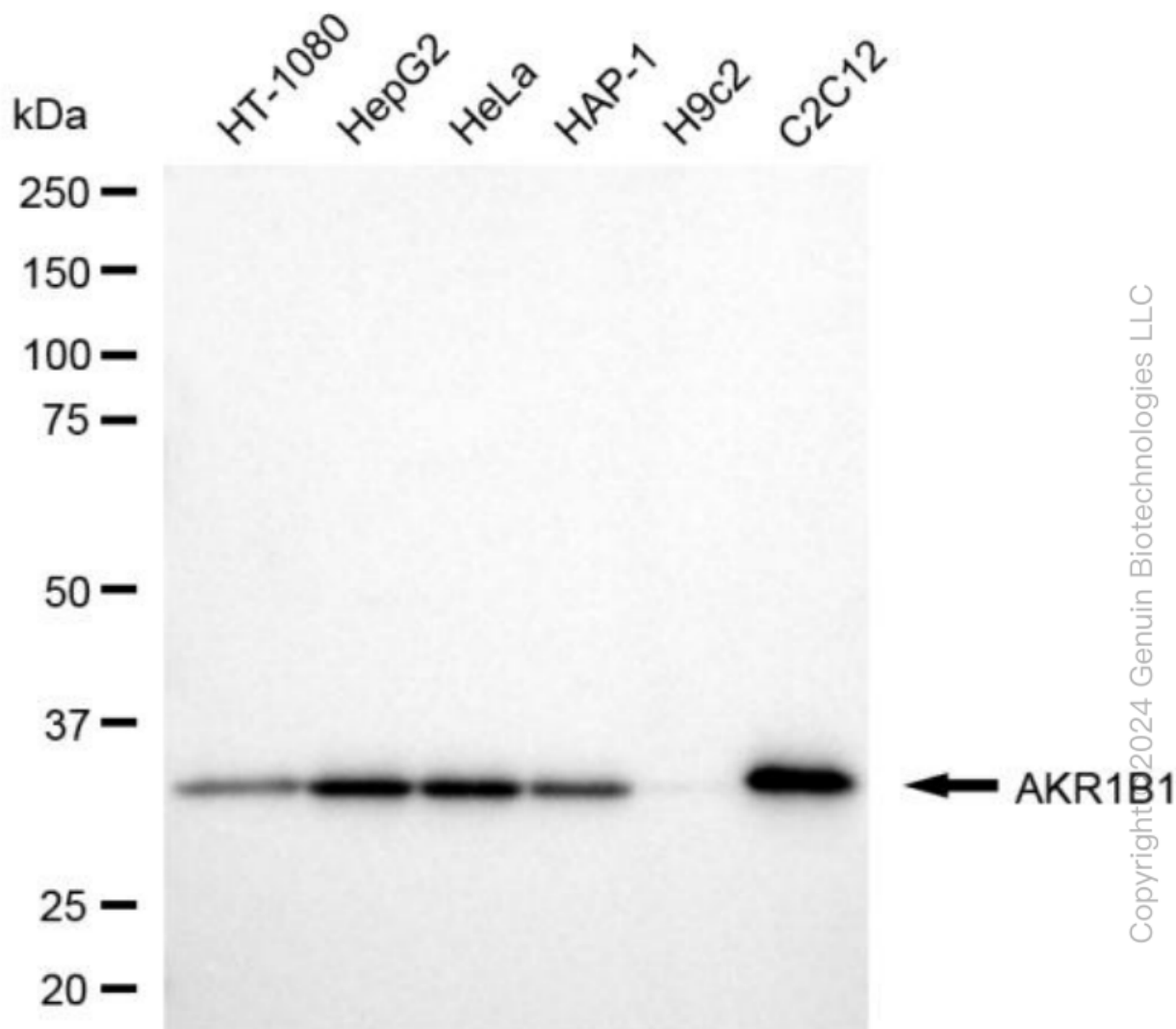
WWW.GENUINBIOTECH.COM

KD-Validated Anti-AKR1B1 Mouse Monoclonal Antibody

PAGE 2

Note: This product is for research use only.

Validation Data



Western blotting analysis using anti-AKR1B1 antibody (Cat#63659). Total cell lysates (30 μ g) from various cell lines were loaded and separated by SDS-PAGE. The blot was incubated with anti-AKR1B1 antibody (Cat#63659, 1:5,000) and HRP-conjugated goat anti-mouse secondary antibody (Cat#101, 1:20,000) respectively. Image was developed using NaQTM ECL Substrate Kit (Cat#716).

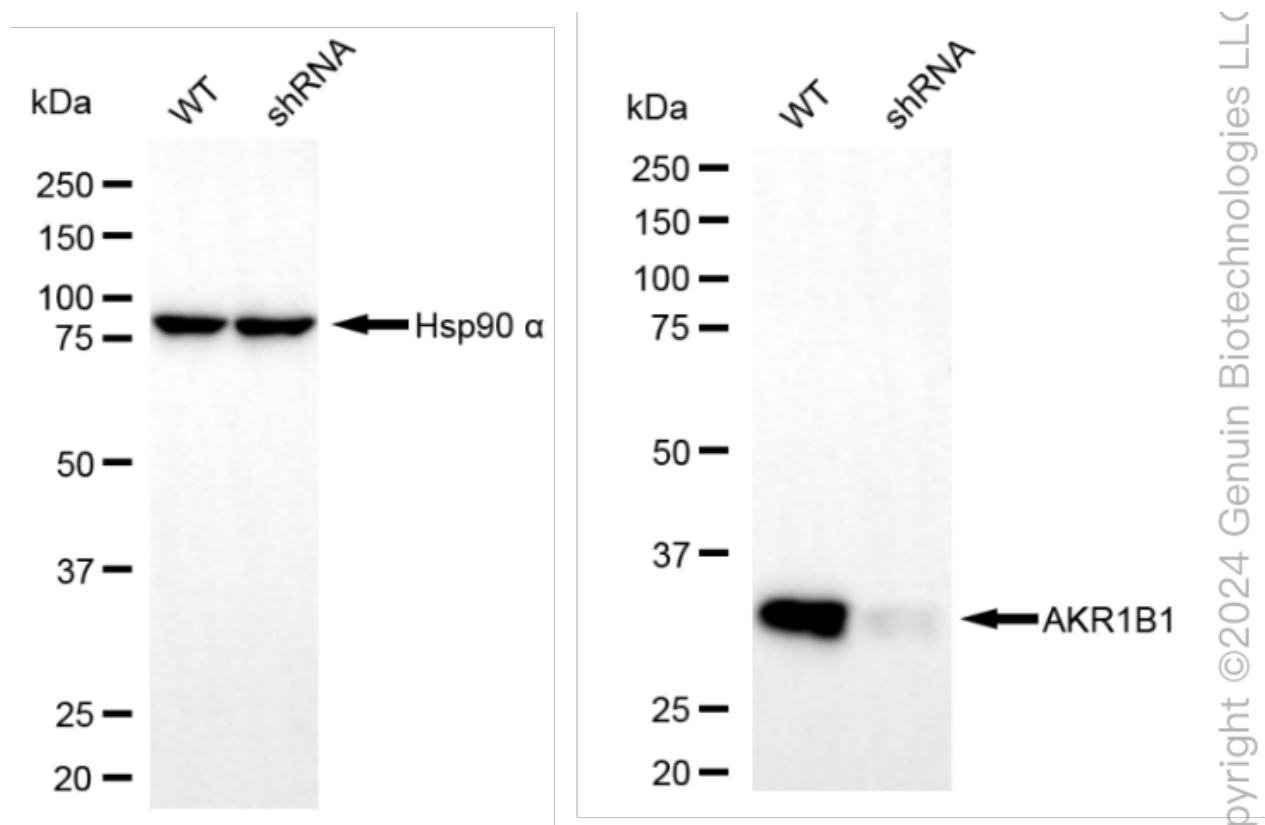
SUPPORT

SUPPORT@GENUINBIOTECH.COM
TEL: +1-540-855-7041

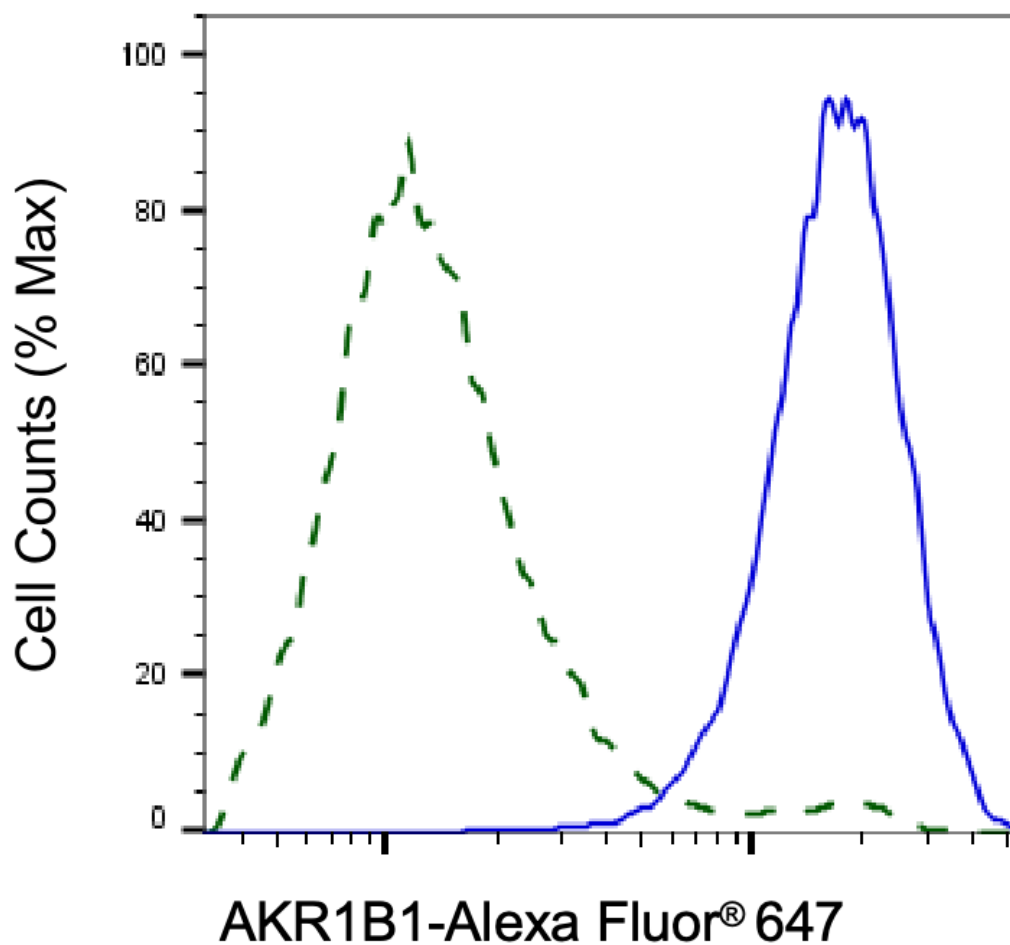
ORDERS

SALES@GENUINBIOTECH.COM
FAX: +1-540-855-7041

WWW.GENUINBIOTECH.COM



Western blotting analysis using anti-AKR1B1 antibody (Cat#63659). AKR1B1 expression in wild-type (WT) and AKR1B1 shRNA knockdown (KD) HeLa cells with 20 μ g of total cell lysates. Hsp90 α serves as a loading control. The blot was incubated with anti-AKR1B1 antibody (Cat#63659, 1:5,000) and HRP-conjugated goat anti-mouse secondary antibody (Cat#101, 1:20,000) respectively. Image was developed using NaQ™ ECL Substrate Kit (Cat#716).



Copyright ©2025 Genuin Biotechnologies LLC

Validation of AKR1B1 knockdown using flow cytometry. Wild-type(WT, Blue) and knockdown(KD, Green) HeLa cells were stained with anti-AKR1B1 antibody (Cat#63659, 1:2,000) and analyzed using BD flow cytometer.