

KD-Validated Anti-Annexin A6 Rabbit Monoclonal Antibody



Catalog #: 63669

Aliases

ANXA6; Annexin A6; ANX6; 67 KDa Callectrin; Chromobindin-20; Lipocortin VI; Annexin-6; CPB-II; P68; P70; Testis Secretory Sperm-Binding Protein Li 198a; Calcium-Binding Protein P68; Annexin VI (P68); Calphobindin II; Calphobindin-II; Callectrin; Protein III; Annexin VI; CBP68

Background

Gene Name: ANXA6

NCBI Gene Entry: [309](#)

UniProt Entry: [P08133](#)

Application Information

Molecular Weight: Predicted, 76 kDa; observed, 70 kDa

Clonality: Rabbit monoclonal antibody

Clone ID: 24GB6825

Species Reactivity: Human, mouse, rat

Applications Tested: Western blotting (WB), flow cytometry (FCM), immunocytochemistry (IC)

Immunogen

Recombinant protein of human Annexin-6

Isotype

Rabbit IgG

Storage Buffer

Supplied in PBS (pH 7.4) containing 50% glycerol, and 0.02% sodium azide.

Storage

Store at -20 °C for one year.

Recommended Dilutions

Western Blotting (WB): 1:1,000-1:5,000

Flow Cytometry (FCM): 1:2,000

Immunocytochemistry (IC): 1:100-1:1,000

Note: This product is for research use only.

SUPPORT

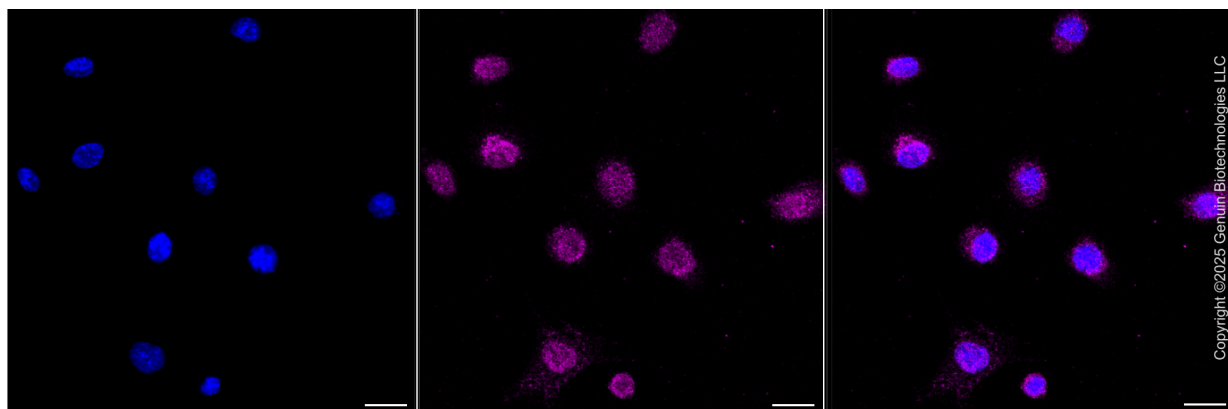
SUPPORT@GENUINBIOTECH.COM
TEL: +1-540-855-7041

ORDERS

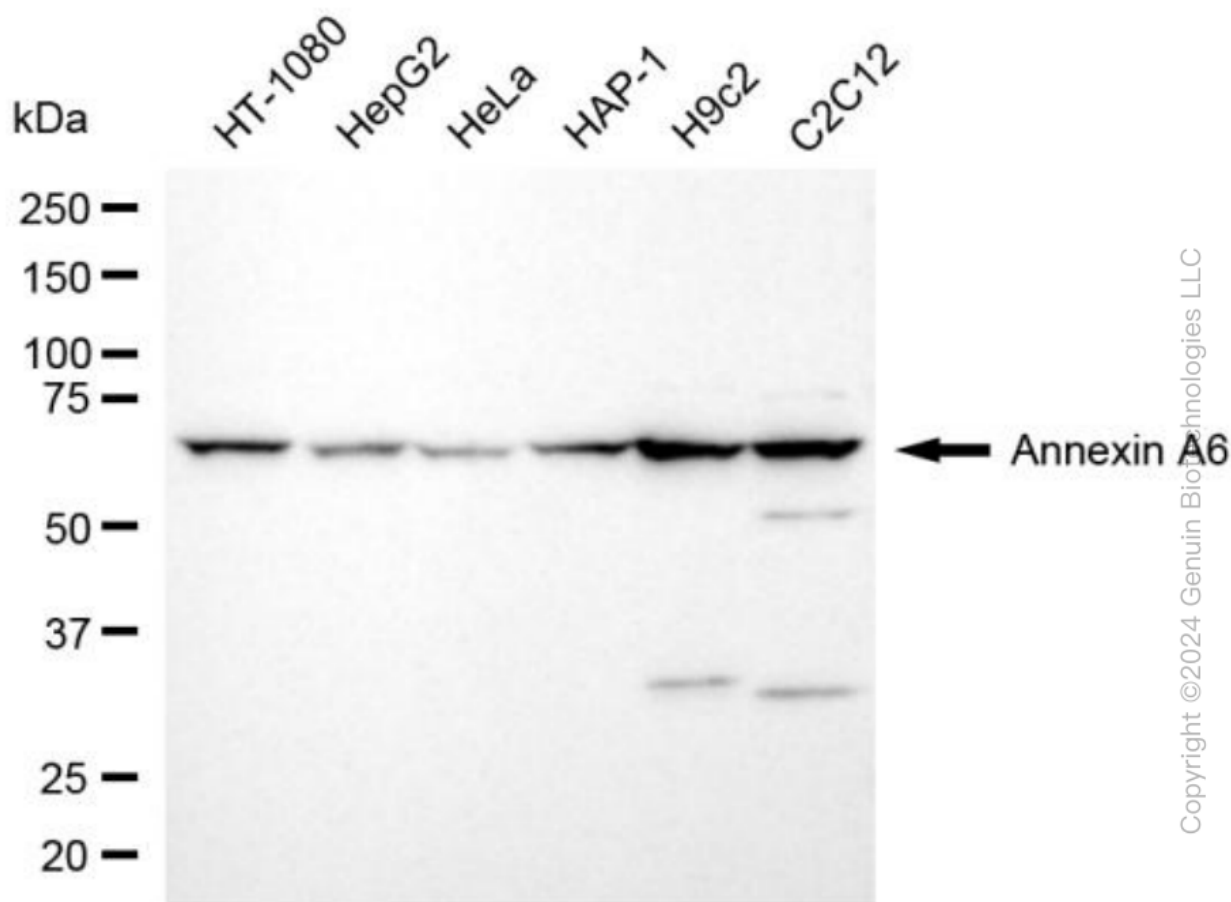
SALES@GENUINBIOTECH.COM
FAX: +1-540-855-7041

WWW.GENUINBIOTECH.COM

Validation Data



Immunocytochemical staining of C2C12 cells with anti-Annexin A6 antibody (Cat#63669, 1:1,000) . Nuclei were stained blue with DAPI; Annexin A6 was stained magenta with Alexa Fluor® 647. Images were taken using Leica stellaris 5. Protein abundance based on laser Intensity and smart gain: Low. Scale bar, 20 μ m.



Western blotting analysis using anti-annexin A6 antibody (Cat#63669). Total cell lysates (30 μ g) from various cell lines were loaded and separated by SDS-PAGE. The blot was incubated with

SUPPORT

SUPPORT@GENUINBIOTECH.COM
TEL: +1-540-855-7041

ORDERS

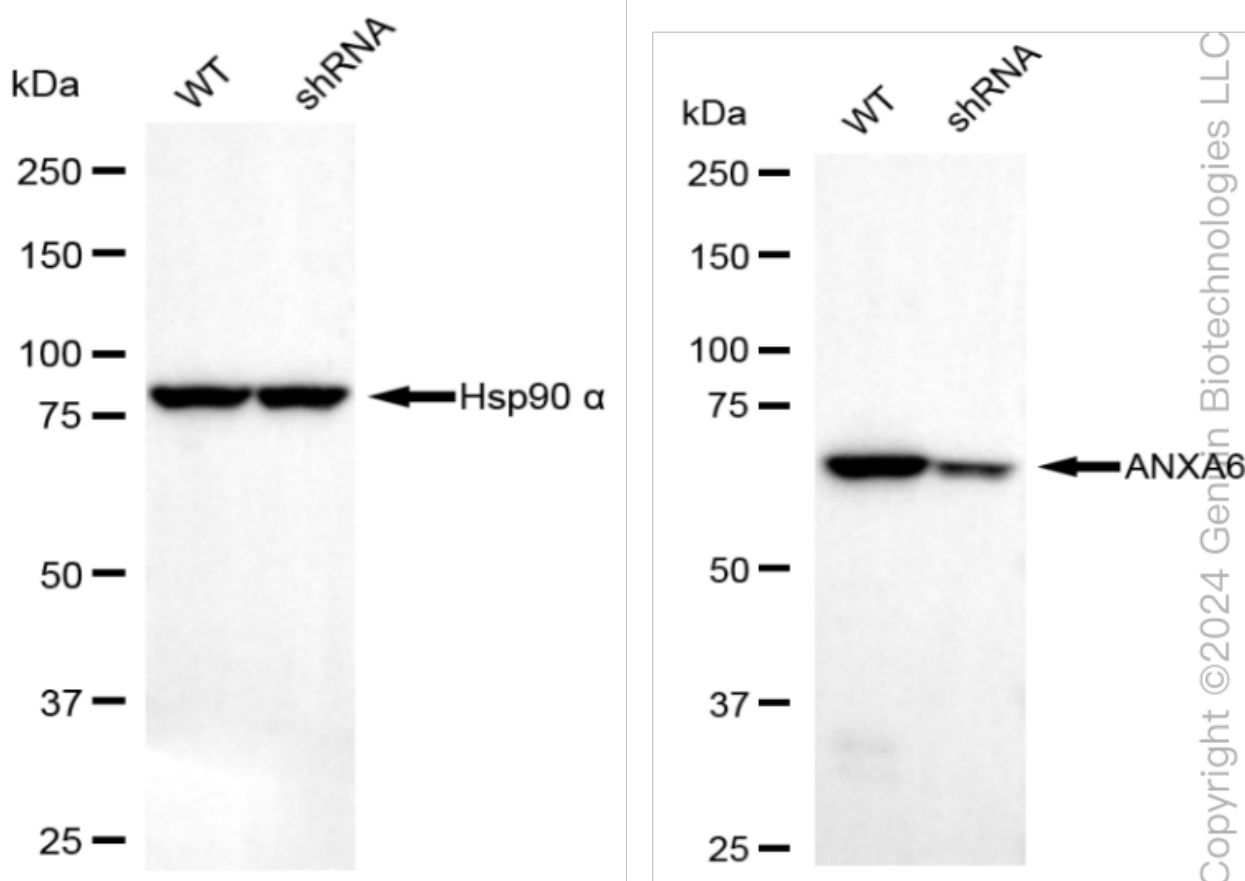
SALES@GENUINBIOTECH.COM
FAX: +1-540-855-7041

WWW.GENUINBIOTECH.COM

KD-Validated Anti-Annexin A6 Rabbit Monoclonal Antibody

PAGE 3

anti-annexin A6 antibody (Cat#63669, 1:5,000) and HRP-conjugated goat anti-rabbit secondary antibody (Cat#201, 1:20,000) respectively. Image was developed using NaQ™ ECL Substrate Kit (Cat#716).



Western blotting analysis using anti-annexin A6 antibody (Cat#63669). Annexin A6 expression in wild-type (WT) and annexin A6 (ANXA6) shRNA knockdown (KD) HT-1080 cells with 20 µg of total cell lysates. Hsp90 α serves as a loading control. The blot was incubated with anti-annexin A6 antibody (Cat#63669, 1:5,000) and HRP-conjugated goat anti-rabbit secondary antibody (Cat#201, 1:20,000) respectively. Image was developed using NaQ™ ECL Substrate Kit (Cat#716).

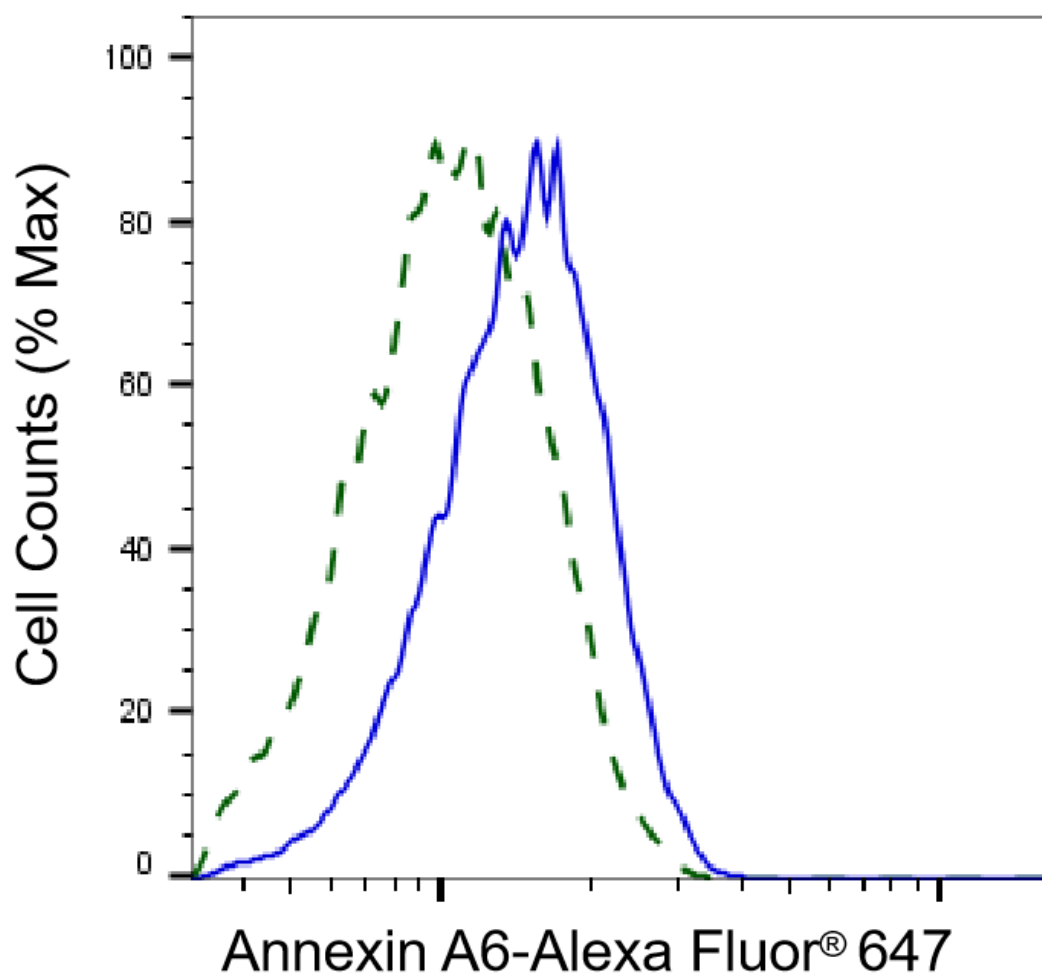
SUPPORT

SUPPORT@GENUINBIOTECH.COM
TEL: +1-540-855-7041

ORDERS

SALES@GENUINBIOTECH.COM
FAX: +1-540-855-7041

WWW.GENUINBIOTECH.COM



Copyright ©2025 Genuin Biotechnologies LLC

Validation of Annexin A6 knockdown using flow cytometry. Wild-type(WT, Blue) and knockdown(KD, Green) HeLa cells were stained with anti-Annexin A6 antibody (Cat#63669, 1:2,000) and analyzed using BD flow cytometer.