

KD-Validated Anti-BTF3 Rabbit Monoclonal Antibody



Catalog #: 63681

Aliases

BTF3; Basic Transcription Factor 3; BTF3a; BTF3b; NACB; Nascent-Polypeptide-Associated Complex Beta Polypeptide; Nascent Polypeptide-Associated Complex Subunit Beta; RNA Polymerase B Transcription Factor 3; Transcription Factor BTF3; NAC-Beta; BETA-NAC

Background

Gene Name: BTF3

NCBI Gene Entry: [689](#)

UniProt Entry: [P20290](#)

Application Information

Molecular Weight: Predicted, 22 kDa; observed, 18,22 kDa

Clonality: Rabbit monoclonal antibody

Clone ID: 24GB6880

Species Reactivity: Human, mouse, rat

Applications Tested: Western blotting (WB), flow cytometry (FCM), immunocytochemistry (IC)

Immunogen

Recombinant protein of human BTF3

Isotype

Rabbit IgG

Storage Buffer

Supplied in PBS (pH 7.4) containing 50% glycerol, and 0.02% sodium azide.

Storage

Store at -20 °C for one year.

Recommended Dilutions

Western Blotting (WB): 1:1,000-1:5,000

Flow Cytometry (FCM): 1:2,000

Immunocytochemistry (IC): 1:100-1:1,000

Note: This product is for research use only.

SUPPORT

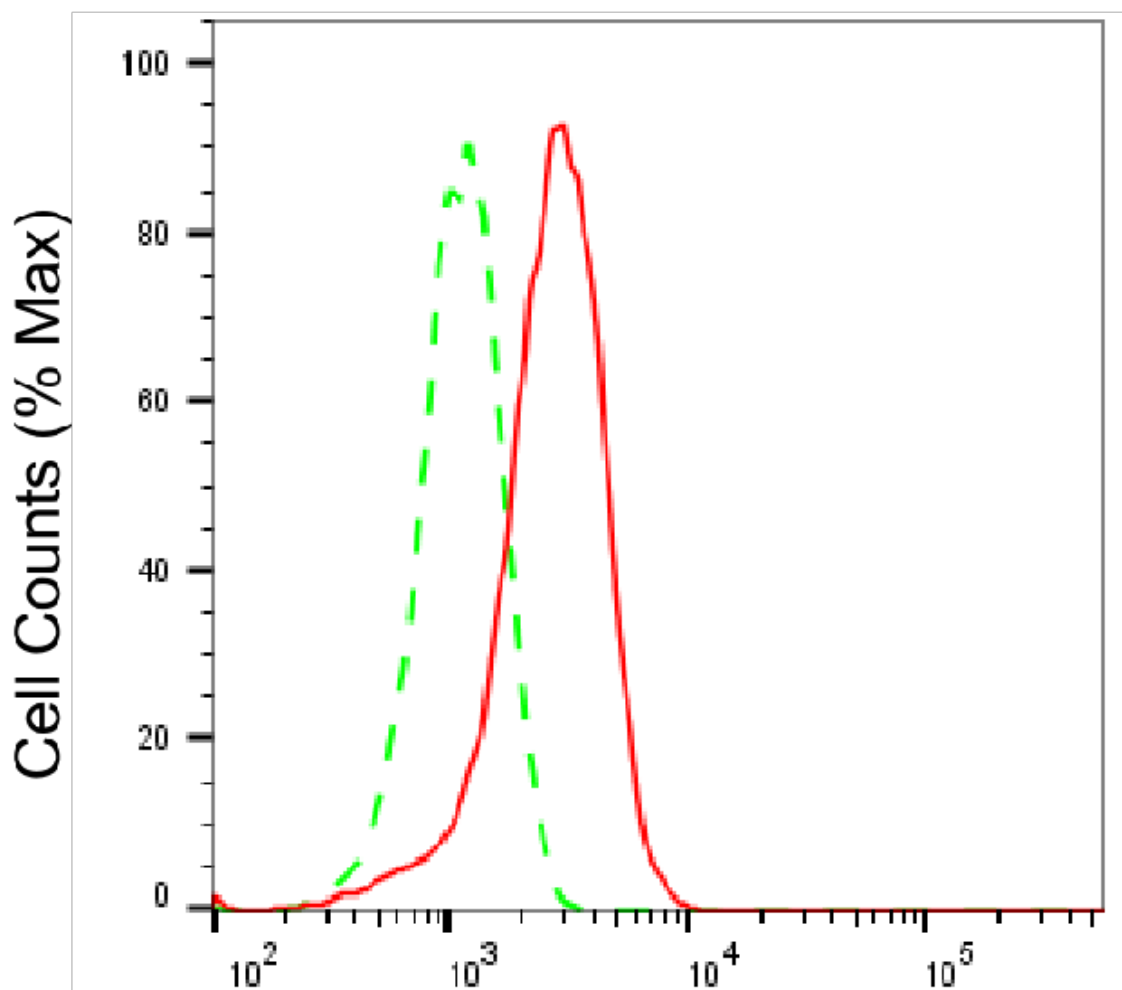
SUPPORT@GENUINBIOTECH.COM
TEL: +1-540-855-7041

ORDERS

SALES@GENUINBIOTECH.COM
FAX: +1-540-855-7041

WWW.GENUINBIOTECH.COM

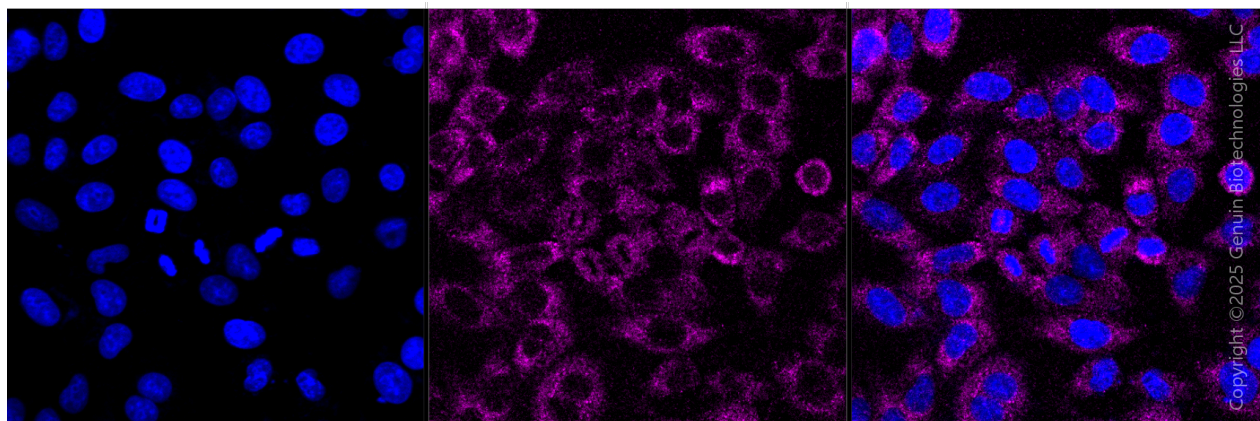
Validation Data



Copyright ©2025 Genuin Biotechnologies LLC

BTF3-Alexa Fluor® 647

Flow cytometric analysis of BTF3 expression in HepG2 cells using anti-BTF3 antibody (Cat#63681, 1:2,000). Green, isotype control; red, BTF3.



Copyright ©2025 Genuin Biotechnologies LLC

SUPPORT

SUPPORT@GENUINBIOTECH.COM
TEL: +1-540-855-7041

ORDERS

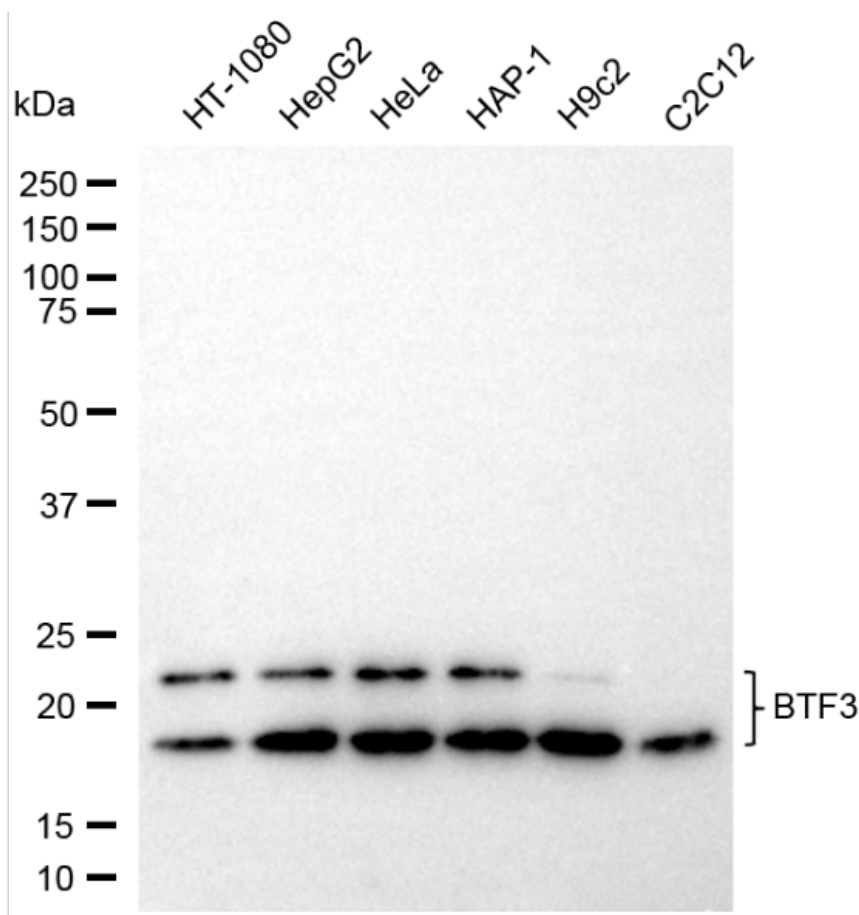
SALES@GENUINBIOTECH.COM
FAX: +1-540-855-7041

WWW.GENUINBIOTECH.COM

KD-Validated Anti-BTF3 Rabbit Monoclonal Antibody

PAGE 3

Immunocytochemical staining of HepG2 cells with anti-BTF3 antibody (Cat#63681, 1:1,000). Nuclei were stained blue with DAPI; BTF3 was stained magenta with Alexa Fluor® 647. Images were taken using Leica stellaris 5. Protein abundance based on laser Intensity and smart gain: Medium. Scale bar, 20 μ m.



Copyright ©2025 Genuin Biotechnologies LLC

Western blotting analysis using anti-BTF3 antibody (Cat#63681). Total cell lysates (30 μ g) from various cell lines were loaded and separated by SDS-PAGE. The blot was incubated with anti-BTF3 antibody (Cat#63681, 1:5,000) and HRP-conjugated goat anti-rabbit secondary antibody (Cat#201, 1:20,000) respectively. Image was developed using NaQ™ ECL Substrate Kit (Cat#716).

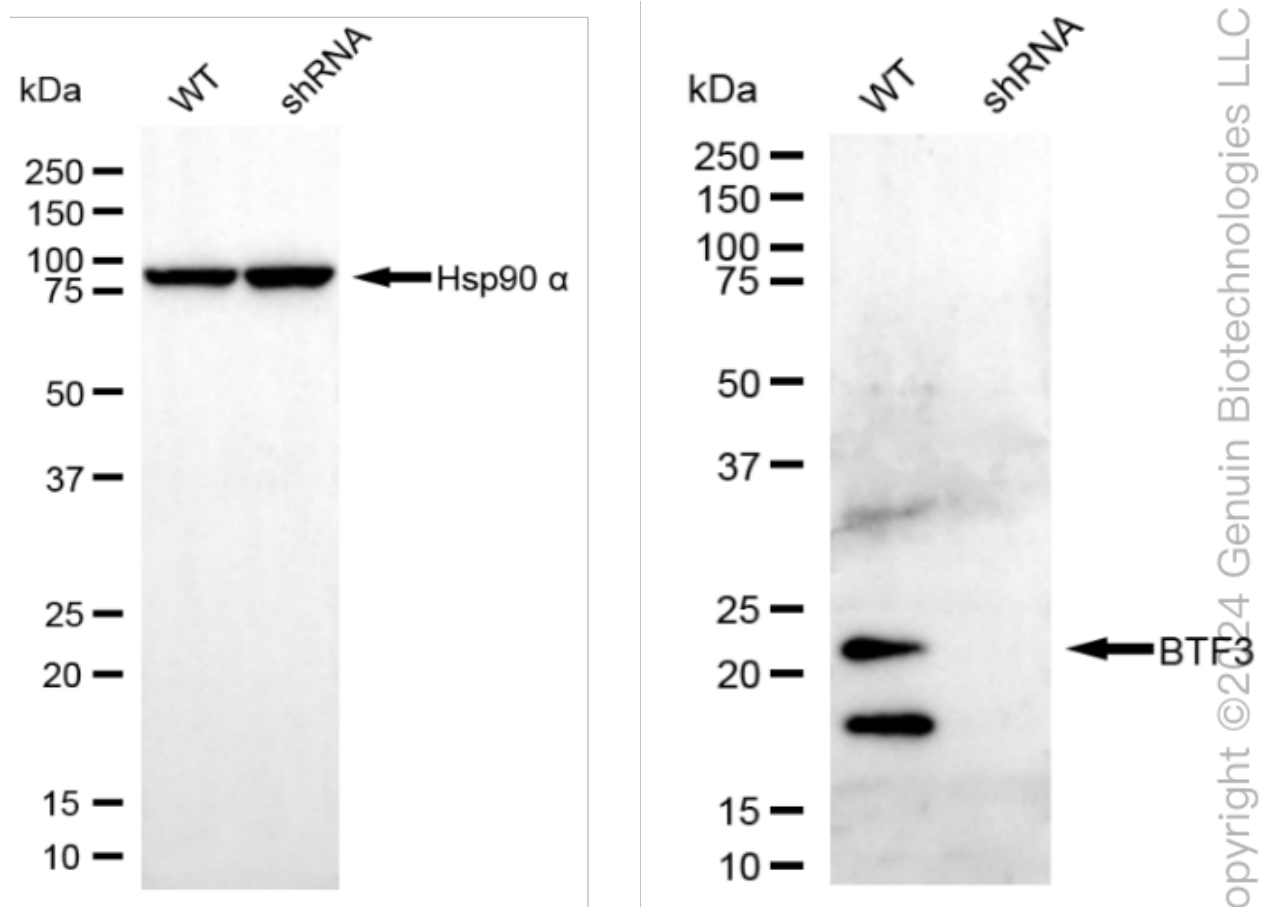
SUPPORT

SUPPORT@GENUINBIOTECH.COM
TEL: +1-540-855-7041

ORDERS

SALES@GENUINBIOTECH.COM
FAX: +1-540-855-7041

WWW.GENUINBIOTECH.COM



Western blotting analysis using anti-BTF3 antibody (Cat#63681). BTF3 expression in wild-type (WT) and BTF3 shRNA knockdown (KD) HeLa cells with 20 µg of total cell lysates. Hsp90 α serves as a loading control. The blot was incubated with anti-BTF3 antibody (Cat#63681, 1:5,000) and HRP-conjugated goat anti-rabbit secondary antibody (Cat#201, 1:20,000) respectively. Image was developed using FeQ™ ECL Substrate Kit (Cat#226).