

KD-Validated Anti-Clathrin Heavy Chain Rabbit Monoclonal Antibody



Catalog #: 63697

Aliases

CLTC; Clathrin Heavy Chain; CLTCL; Hc; Clathrin Heavy Chain On Chromosome 17; Clathrin, Heavy Polypeptide-Like 2; Clathrin, Heavy Polypeptide (Hc); Clathrin Heavy Chain 1; CLH-17; Clathrin, Heavy Chain (Hc); Clathrin, Heavy Chain; KIAA0034; CHC17; MRD56; CLH17; CHC

Background

Gene Name: CLTC

NCBI Gene Entry: [1213](#)

UniProt Entry: [Q00610](#)

Application Information

Molecular Weight: Predicted, 192 kDa; observed, 192 kDa

Clonality: Rabbit monoclonal antibody

Clone ID: 24GB6960

Species Reactivity: Human, mouse, rat

Applications Tested: Western blotting (WB), flow cytometry (FCM), immunocytochemistry (IC)

Immunogen

A synthesized peptide derived from human Clathrin heavy chain

Isotype

Rabbit IgG

Storage Buffer

Supplied in PBS (pH 7.4) containing 50% glycerol, and 0.02% sodium azide.

Storage

Store at -20 °C for one year.

Recommended Dilutions

Western Blotting (WB): 1:1,000-1:5,000

Flow Cytometry (FCM): 1:2,000

Immunocytochemistry (IC): 1:100-1:1,000

Note: This product is for research use only.

SUPPORT

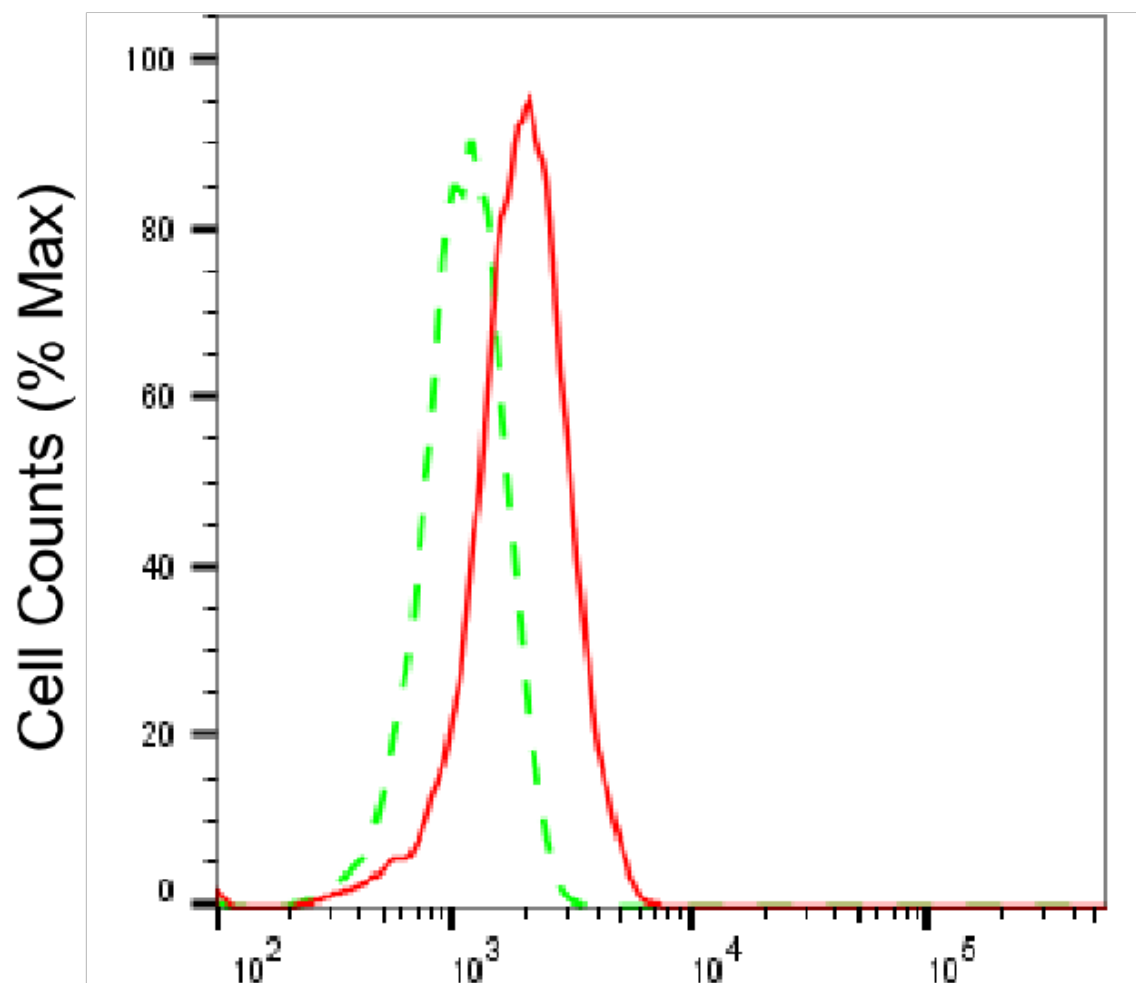
SUPPORT@GENUINBIOTECH.COM
TEL: +1-540-855-7041

ORDERS

SALES@GENUINBIOTECH.COM
FAX: +1-540-855-7041

WWW.GENUINBIOTECH.COM

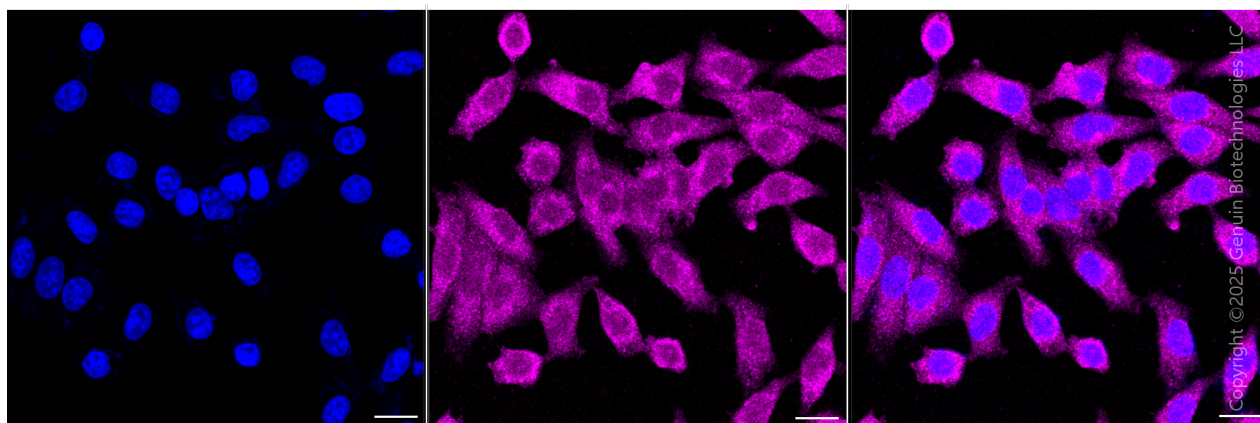
Validation Data



Copyright ©2025 Genuin Biotechnologies LLC

Clathrin heavy chain-Alexa Fluor® 647

Flow cytometric analysis of Clathrin heavy chain expression in HepG2 cells using anti-Clathrin heavy chain antibody (Cat#63697, 1:2,000). Green, isotype control; red, Clathrin heavy chain.



SUPPORT

SUPPORT@GENUINBIOTECH.COM
TEL: +1-540-855-7041

ORDERS

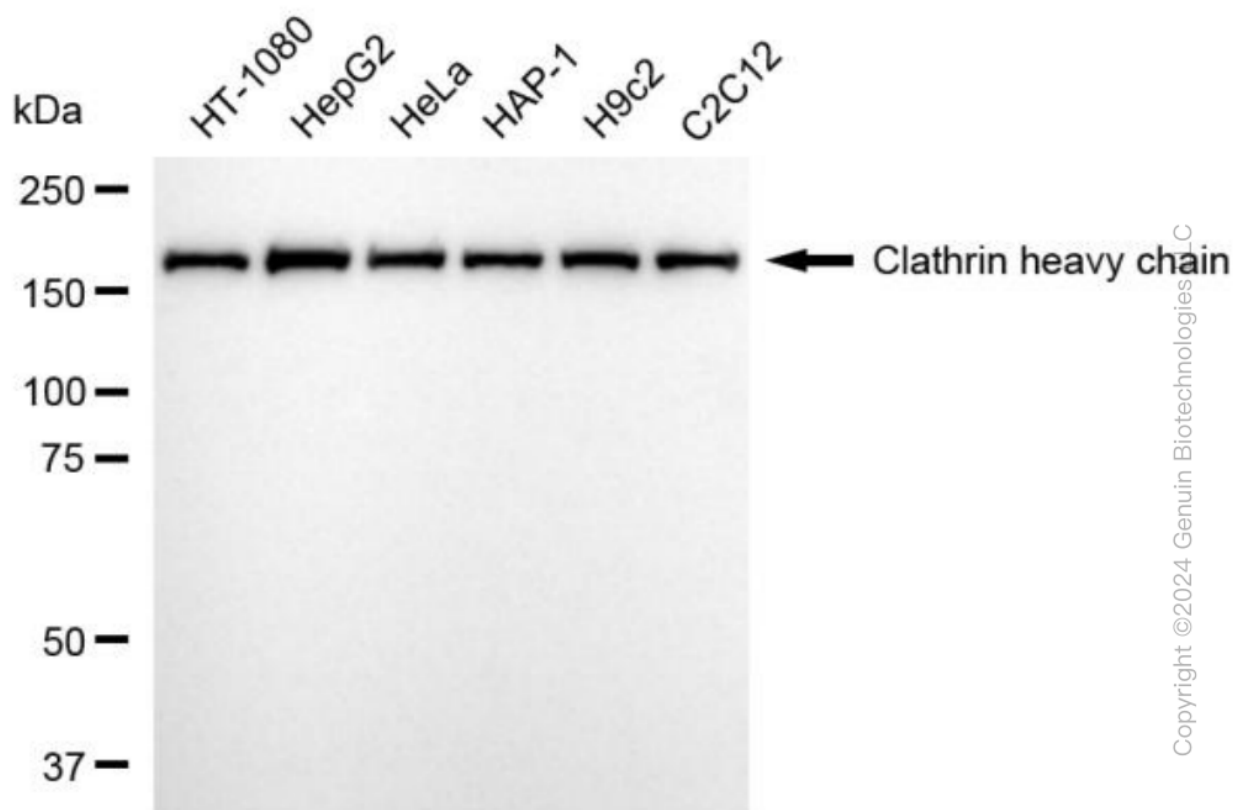
SALES@GENUINBIOTECH.COM
FAX: +1-540-855-7041

WWW.GENUINBIOTECH.COM

KD-Validated Anti-Clathrin Heavy Chain Rabbit Monoclonal Antibody

PAGE 3

Immunocytochemical staining of HepG2 cells with anti-Clathrin heavy chain antibody (Cat#63697, 1:1,000). Nuclei were stained blue with DAPI; Clathrin heavy chain was stained magenta with Alexa Fluor® 647. Images were taken using Leica stellaris 5. Protein abundance based on laser Intensity and smart gain: Medium. Scale bar, 20 μ m.



Western blotting analysis using anti-clathrin heavy chain antibody (Cat#63697). Total cell lysates (30 μ g) from various cell lines were loaded and separated by SDS-PAGE. The blot was incubated with anti-clathrin heavy chain antibody (Cat#63697, 1:5,000) and HRP-conjugated goat anti-rabbit secondary antibody (Cat#201, 1:20,000) respectively. Image was developed using NaQ™ ECL Substrate Kit (Cat#716).

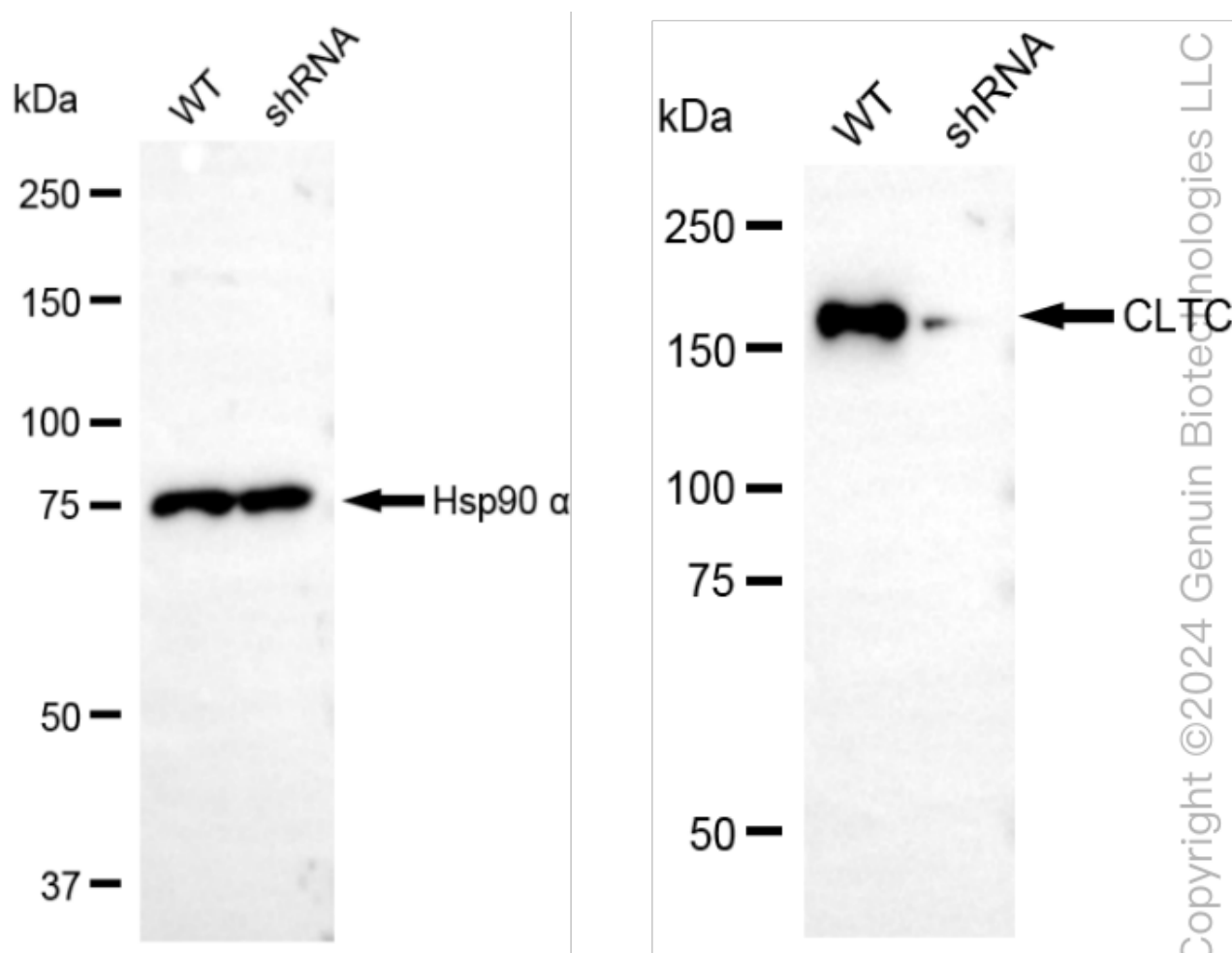
SUPPORT

SUPPORT@GENUINBIOTECH.COM
TEL: +1-540-855-7041

ORDERS

SALES@GENUINBIOTECH.COM
FAX: +1-540-855-7041

WWW.GENUINBIOTECH.COM



Western blotting analysis using anti-clathrin heavy chain antibody (Cat#63697). Clathrin heavy chain expression in wild-type (WT) and clathrin heavy chain (CLTC) shRNA knockdown (KD) HT-1080 cells with 20 µg of total cell lysates. Hsp90 α serves as a loading control. The blot was incubated with anti-clathrin heavy chain antibody (Cat#63697, 1:5,000) and HRP-conjugated goat anti-rabbit secondary antibody (Cat#201, 1:20,000) respectively. Image was developed using NaQ™ ECL Substrate Kit (Cat#716).