

# KD-Validated Anti-ATIC Mouse Monoclonal Antibody



**Catalog #: 63701**

## Aliases

ATIC; 5-Aminoimidazole-4-Carboxamide Ribonucleotide Formyltransferase/IMP Cyclohydrolase; PURH; IMPCHASE; AICARFT; Phosphoribosylaminoimidazolecarboxamide Formyltransferase/IMP Cyclohydrolase; AICAR Transformylase/Inosine Monophosphate Cyclohydrolase; Bifunctional Purine Biosynthesis Protein ATIC; 5-Aminoimidazole-4-Carboxamide-1-Beta-D-Ribonucleotide Transformylase/Inosinase; AICAR Formyltransferase/IMP Cyclohydrolase Bifunctional Enzyme; Epididymis Secretory Sperm Binding Protein Li 70p; Bifunctional Purine Biosynthesis Protein PURH; AICARFT/IMPCHASE; HEL-S-70p; AICAR

## Background

Gene Name: ATIC

NCBI Gene Entry: [471](#)

UniProt Entry: [P31939](#)

## Application Information

Molecular Weight: Predicted, 65 kDa; observed, 65 kDa

Clonality: Mouse monoclonal antibody

Clone ID: 24GB6980

Species Reactivity: Human, mouse, rat

Applications Tested: Western blotting (WB), flow cytometry (FCM), immunocytochemistry (IC)

## Immunogen

Recombinant protein of human ATIC

## Isotype

Mouse IgG1

## Storage Buffer

Supplied in PBS (pH 7.4) containing 50% glycerol, and 0.02% sodium azide.

## Storage

Store at -20 °C for one year.

## Recommended Dilutions

Western Blotting (WB): 1:1,000-1:5,000

Flow Cytometry (FCM): 1:2,000

---

### SUPPORT

SUPPORT@GENUINBIOTECH.COM  
TEL: +1-540-855-7041

### ORDERS

SALES@GENUINBIOTECH.COM  
FAX: +1-540-855-7041

[WWW.GENUINBIOTECH.COM](http://WWW.GENUINBIOTECH.COM)

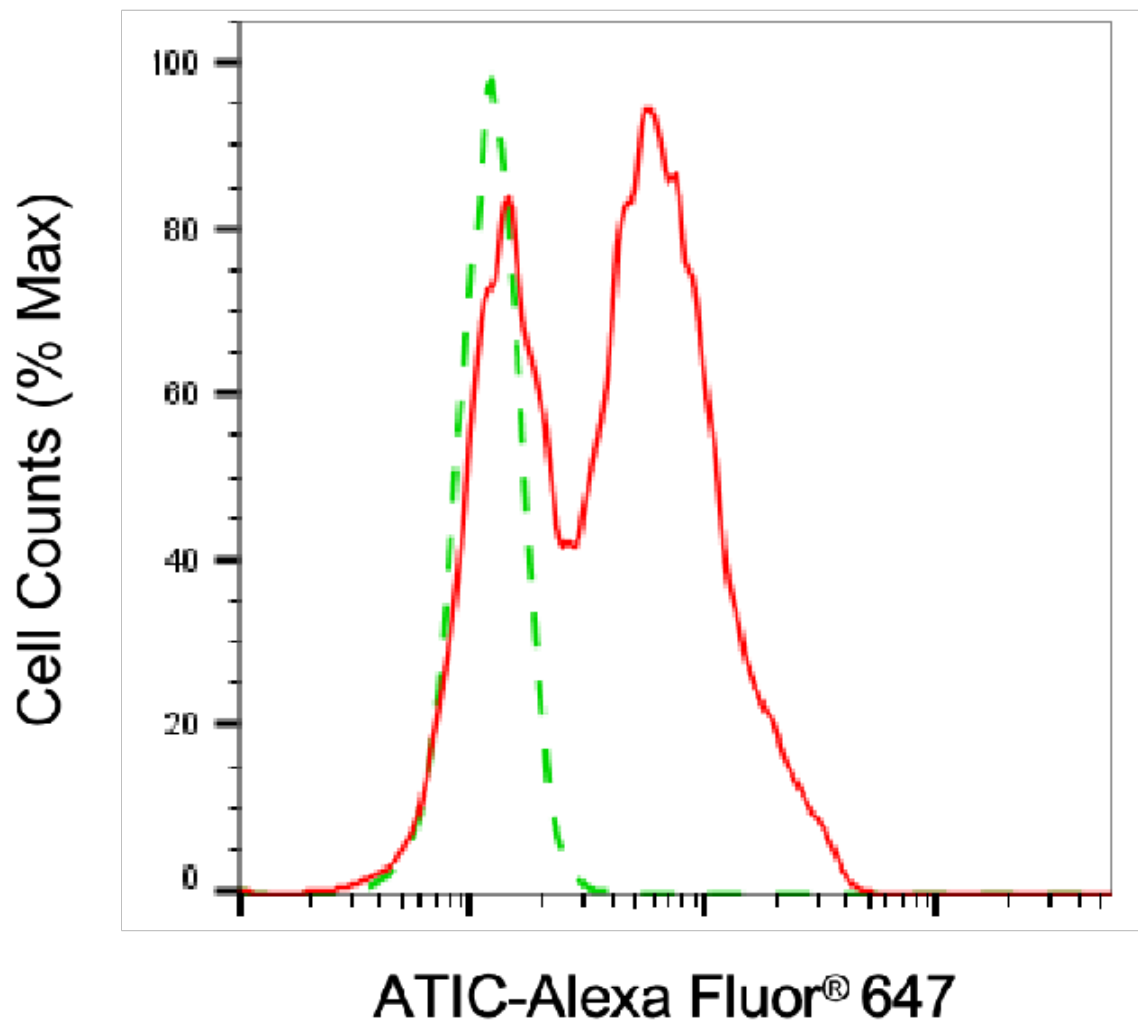
## KD-Validated Anti-ATIC Mouse Monoclonal Antibody

PAGE 2

Immunocytochemistry (IC): 1:100-1:1,000

**Note:** This product is for research use only.

### Validation Data



Copyright ©2025 Genuin Biotechnologies LLC

Flow cytometric analysis of ATIC expression in C2C12 cells using anti-ATIC antibody (Cat#63701, 1:2,000). Green, isotype control; red, ATIC.

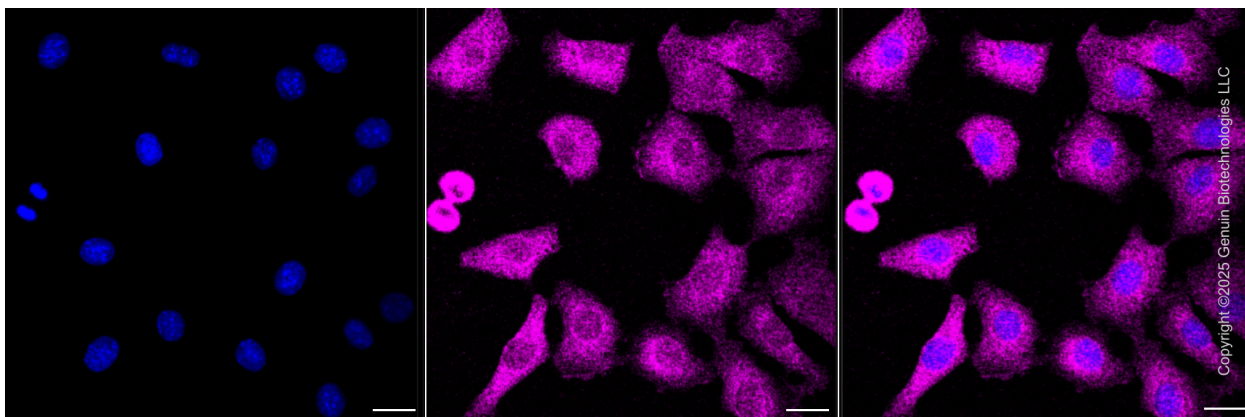
#### SUPPORT

SUPPORT@GENUINBIOTECH.COM  
TEL: +1-540-855-7041

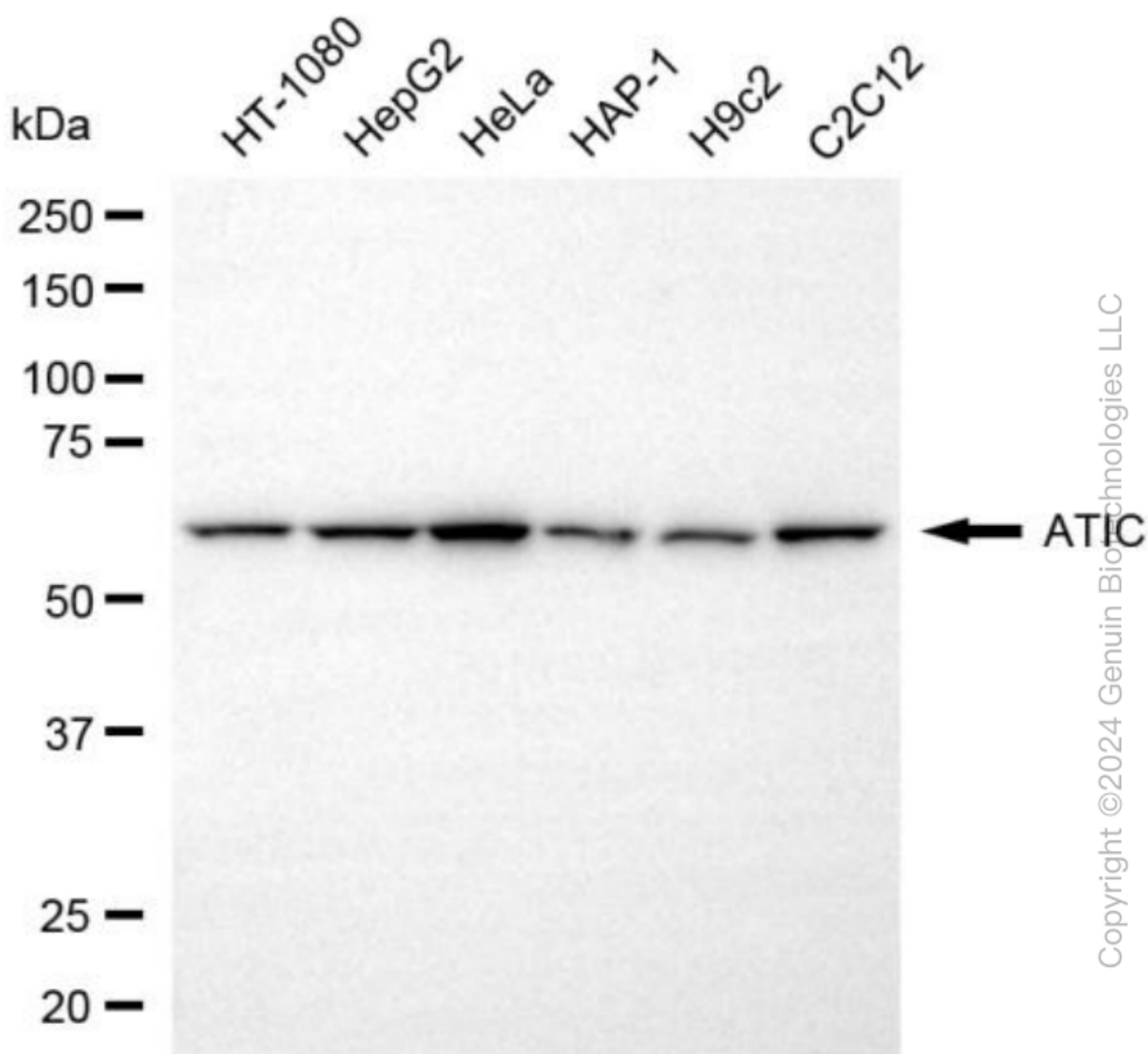
#### ORDERS

SALES@GENUINBIOTECH.COM  
FAX: +1-540-855-7041

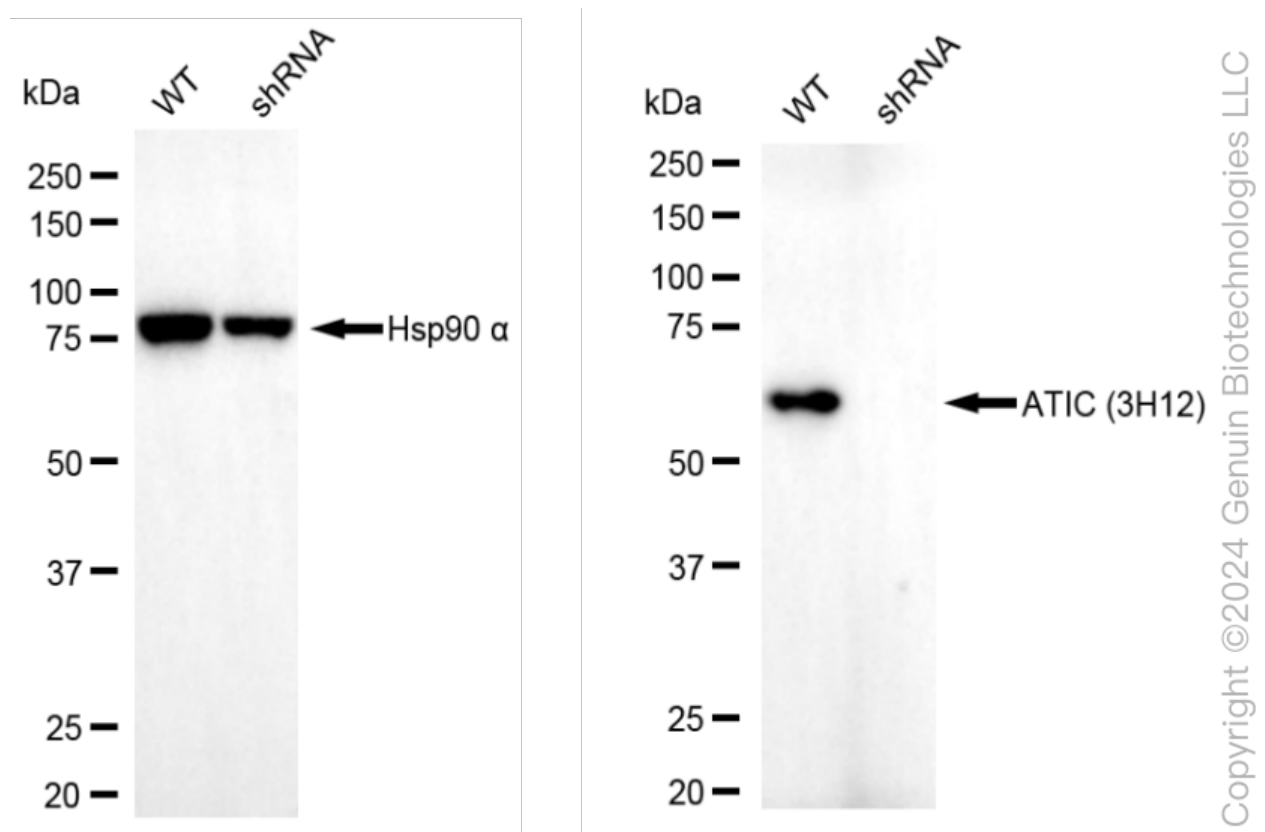
[WWW.GENUINBIOTECH.COM](http://WWW.GENUINBIOTECH.COM)



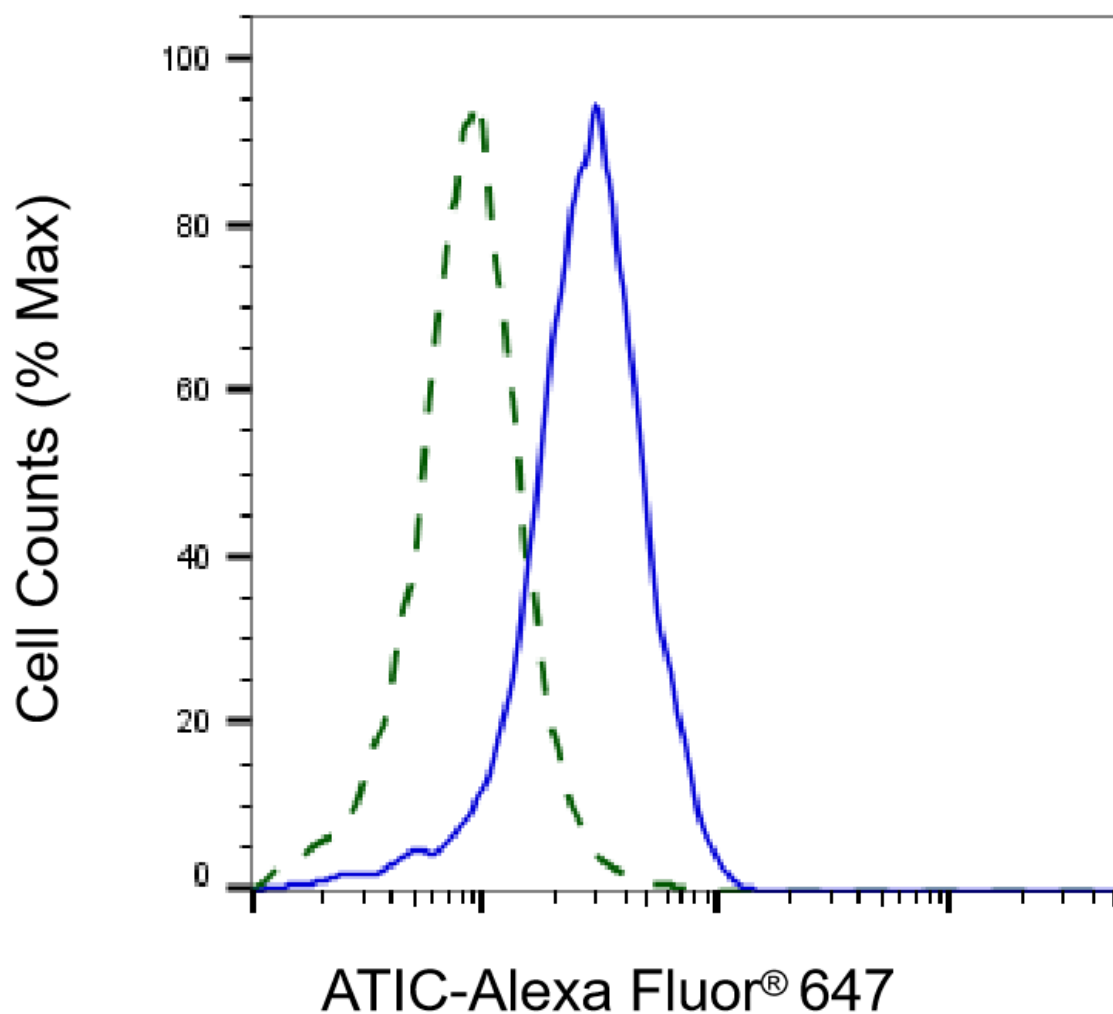
Immunocytochemical staining of C2C12 cells with anti-ATIC associated protein antibody (Cat#63701, 1:1,000) . Nuclei were stained blue with DAPI; ATIC associated protein was stained magenta with Alexa Fluor® 647. Images were taken using Leica stellaris 5. Protein abundance based on laser Intensity and smart gain: Medium. Scale bar, 20  $\mu$ m.



Western blotting analysis using anti-ATIC antibody (Cat#63701). Total cell lysates (30  $\mu$ g) from various cell lines were loaded and separated by SDS-PAGE. The blot was incubated with anti-ATIC antibody (Cat#63701, 1:5,000) and HRP-conjugated goat anti-mouse secondary antibody (Cat#101, 1:20,000) respectively. Image was developed using NaQ™ ECL Substrate Kit (Cat#716).

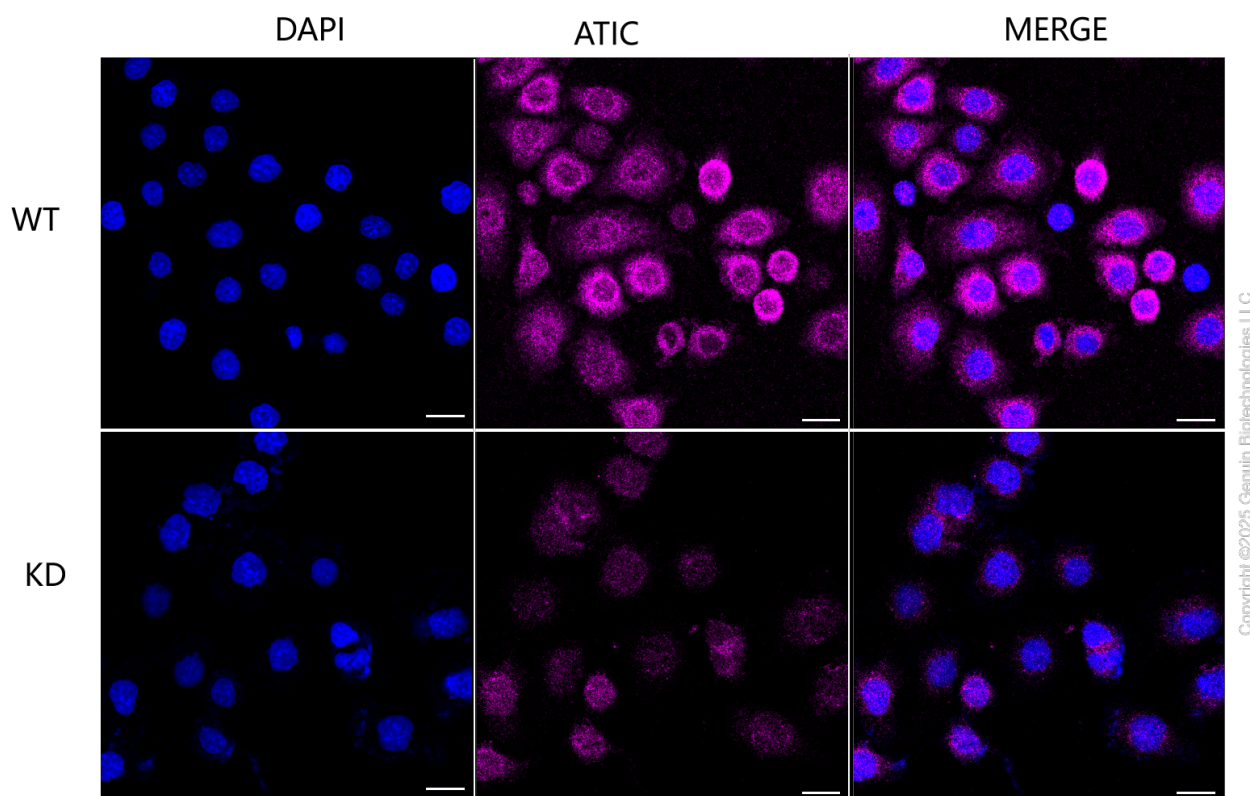


Western blotting analysis using anti-ATIC antibody (Cat#63701). ATIC expression in wild-type (WT) and ATIC shRNA knockdown (KD) HeLa cells with 20 µg of total cell lysates. Hsp90 α serves as a loading control. The blot was incubated with anti-ATIC antibody (Cat#63701, 1:5,000) and HRP-conjugated goat anti-mouse secondary antibody (Cat#101, 1:20,000) respectively. Image was developed using NaQ™ ECL Substrate Kit (Cat#716).



Copyright ©2025 Genuin Biotechnologies LLC

Validation of ATIC knockdown using flow cytometry. Wild-type(WT, Blue) and knockdown(KD, Green) HeLa cells were stained with anti-ATIC antibody (Cat#63701, 1:2,000) and analyzed using BD flow cytometer.



Immunocytochemical staining of HeLa cells using anti-ATIC antibody (Cat#63701, 1:1,000), Top panel: wild-type (WT); Bottom panel: ATIC shRNA knockdown (KD). Nuclei were stained blue with DAPI; ATIC was stained magenta with Alexa Fluor® 647. Scale bar, 20  $\mu$ m. Permeabilization: Triton.