

KD-Validated Anti-EIF2AK2 Mouse Monoclonal Antibody



Catalog #: 63730

Aliases

EIF2AK2; Eukaryotic Translation Initiation Factor 2 Alpha Kinase 2; PKR; Protein Kinase R; PPP1R83; PRKR; Protein Kinase, Interferon-Inducible Double Stranded RNA Dependent; Interferon-Induced, Double-Stranded RNA-Activated Protein Kinase; Protein Phosphatase 1, Regulatory Subunit 83; Tyrosine-Protein Kinase EIF2AK2; Protein Kinase RNA-Activated; Protein Kinase RNA-Regulated; P1/EIF-2A Protein Kinase; EIF-2A Protein Kinase 2; P68 Kinase; Eukaryotic Translation Initiation Factor 2-Alpha Kinase 2; Interferon-Inducible RNA-Dependent Protein Kinase; Double Stranded RNA Activated Protein Kinase; Interferon-Inducible EIF2alpha Kinase; EC 2.7.11.1; EC 2.7.10.2; EIF2AK1; LEUDEN; DYT33

Background

Gene Name: EIF2AK2

NCBI Gene Entry: [5610](#)

UniProt Entry: [P19525](#)

Application Information

Molecular Weight: Predicted, 62 kDa; observed, 68 kDa

Clonality: Mouse monoclonal antibody

Clone ID: 24GB7125

Species Reactivity: Human

Applications Tested: Western blotting (WB), flow cytometry (FCM), immunocytochemistry (IC)

Immunogen

Recombinant protein of human PKR

Isotype

Mouse IgG1 kappa

Storage Buffer

Supplied in PBS (pH 7.4) containing 50% glycerol, and 0.02% sodium azide.

Storage

Store at -20 °C for one year.

Recommended Dilutions

Western Blotting (WB): 1:1,000-1:5,000

SUPPORT

SUPPORT@GENUINBIOTECH.COM
TEL: +1-540-855-7041

ORDERS

SALES@GENUINBIOTECH.COM
FAX: +1-540-855-7041

WWW.GENUINBIOTECH.COM

KD-Validated Anti-EIF2AK2 Mouse Monoclonal Antibody

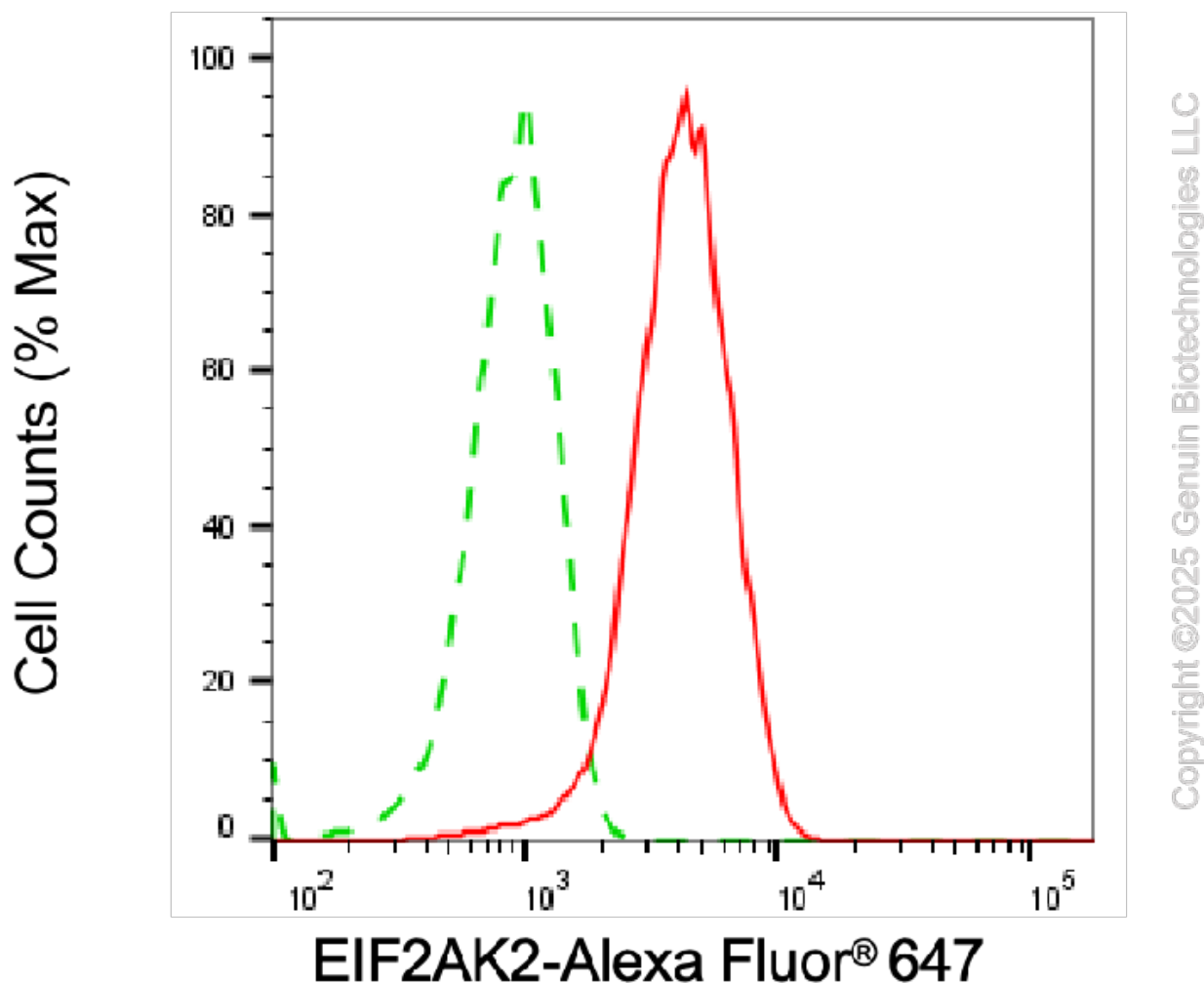
PAGE 2

Flow Cytometry (FCM): 1:2,000

Immunocytochemistry (IC): 1:100-1:1,000

Note: This product is for research use only.

Validation Data



Flow cytometric analysis of EIF2AK2 expression in HepG2 cells using anti-EIF2AK2 antibody (Cat#63730, 1:2,000). Green, isotype control; red, EIF2AK2.

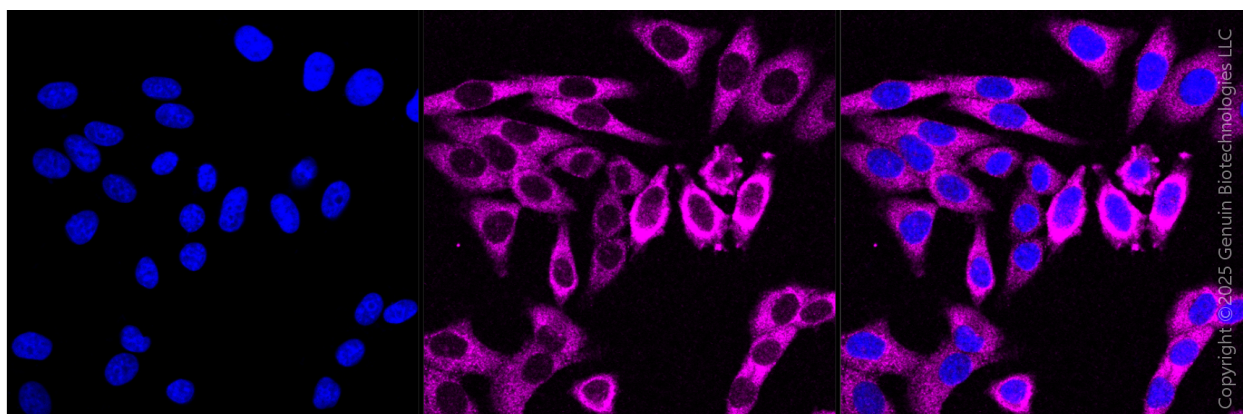
SUPPORT

SUPPORT@GENUINBIOTECH.COM
TEL: +1-540-855-7041

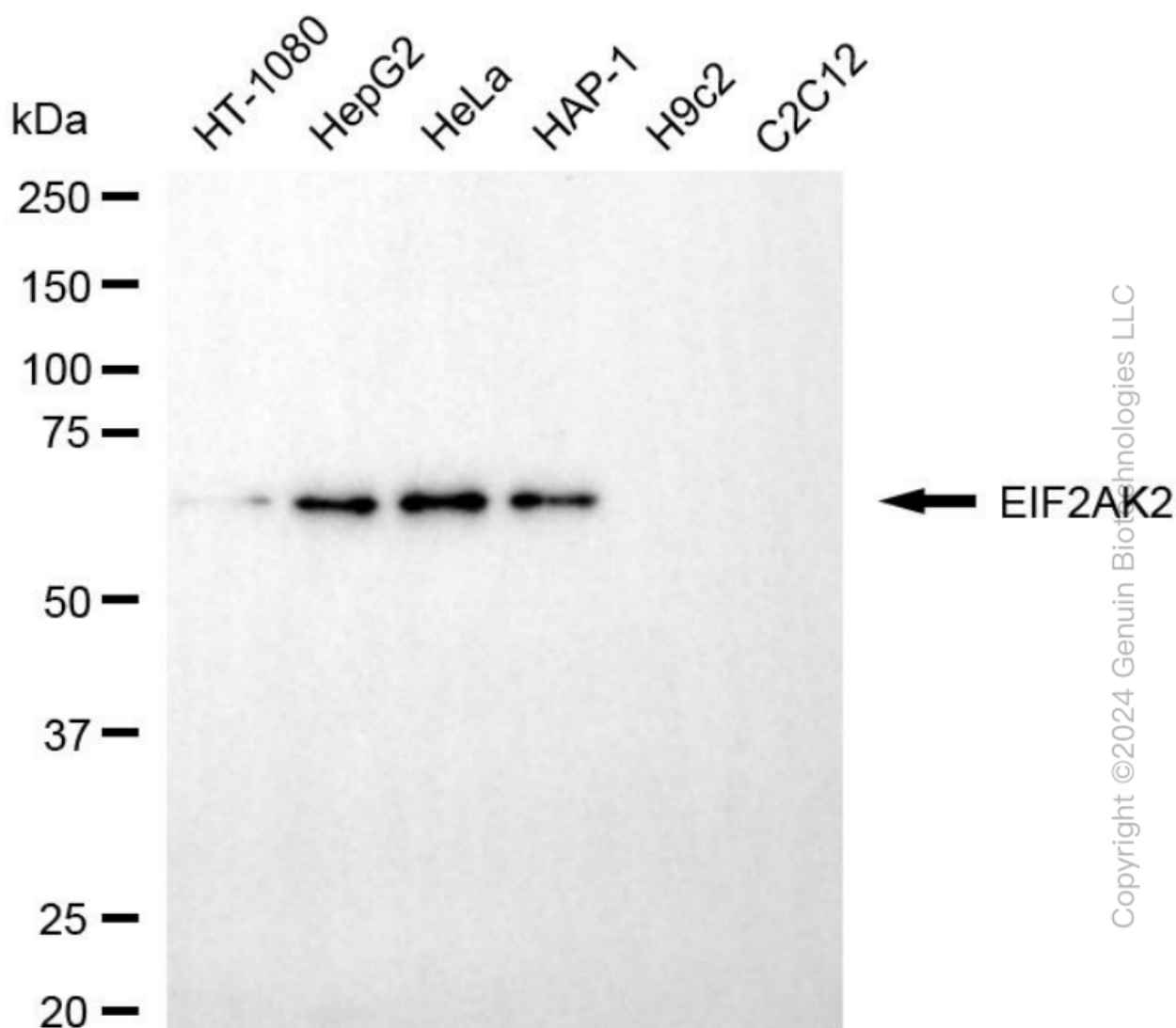
ORDERS

SALES@GENUINBIOTECH.COM
FAX: +1-540-855-7041

WWW.GENUINBIOTECH.COM



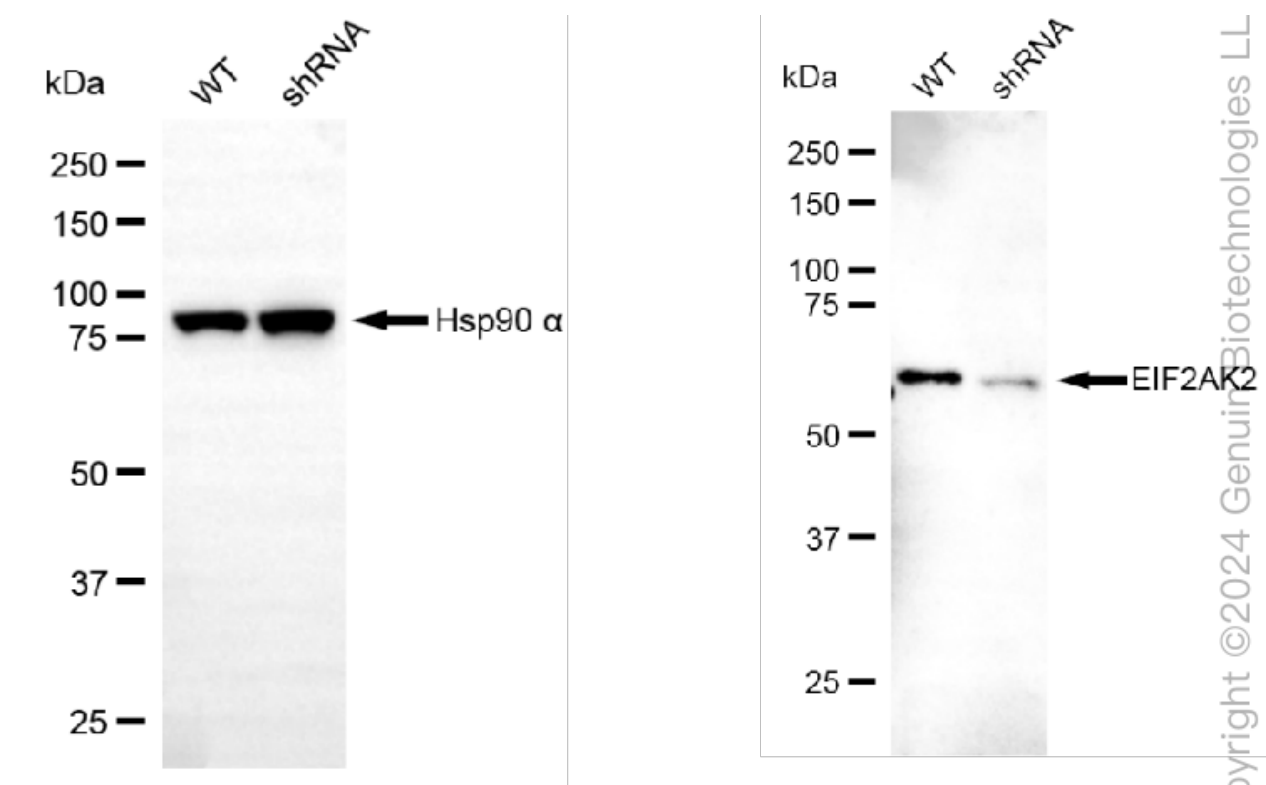
Immunocytochemical staining of HepG2 cells with anti-EIF2AK2 antibody(Cat#63730, 1:1,000) . Nuclei were stained blue with DAPI; EIF2AK2 was stained magenta with Alexa Fluor® 647. Images were taken using Leica stellaris 5. Protein abundance based on laser Intensity and smart gain: Medium. Scale bar, 20 μ m.



KD-Validated Anti-EIF2AK2 Mouse Monoclonal Antibody

PAGE 4

Western blotting analysis using anti-EIF2AK2 antibody (Cat#63730). Total cell lysates (30 µg) from various cell lines were loaded and separated by SDS-PAGE. The blot was incubated with anti-EIF2AK2 antibody (Cat#63730, 1:5,000) and HRP-conjugated goat anti-mouse secondary antibody (Cat#101, 1:20,000) respectively. Image was developed using NaQ™ ECL Substrate Kit (Cat#716). EIF2AK2, eukaryotic translation initiation factor 2 alpha kinase 2.



Western blotting analysis using anti-EIF2AK2 antibody (Cat#63730). EIF2AK2 expression in wild-type (WT) and EIF2AK2 shRNA knockdown (KD) HeLa cells with 20 µg of total cell lysates. Hsp90 α serves as a loading control. The blot was incubated with anti-EIF2AK2 antibody (Cat#63730, 1:5,000) and HRP-conjugated goat anti-mouse secondary antibody (Cat#101, 1:20,000) respectively. Image was developed using FeQ™ ECL Substrate Kit (Cat#226).

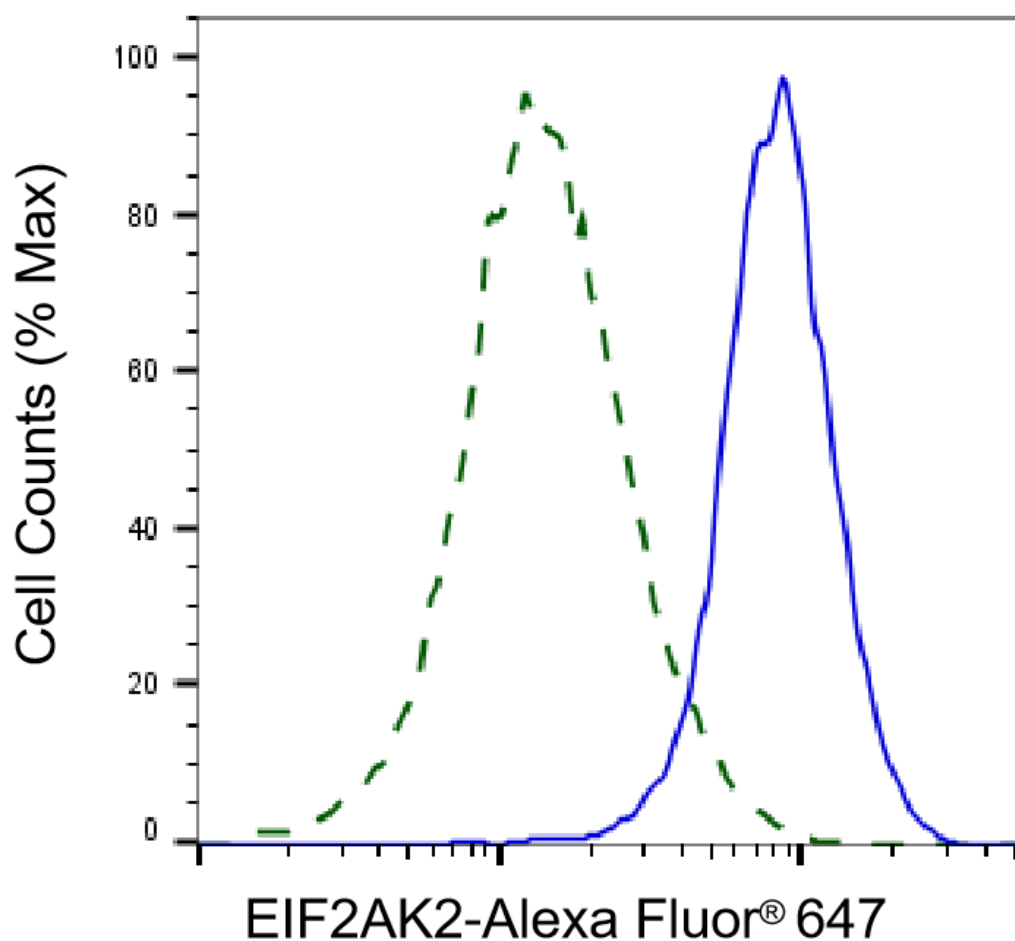
SUPPORT

SUPPORT@GENUINBIOTECH.COM
TEL: +1-540-855-7041

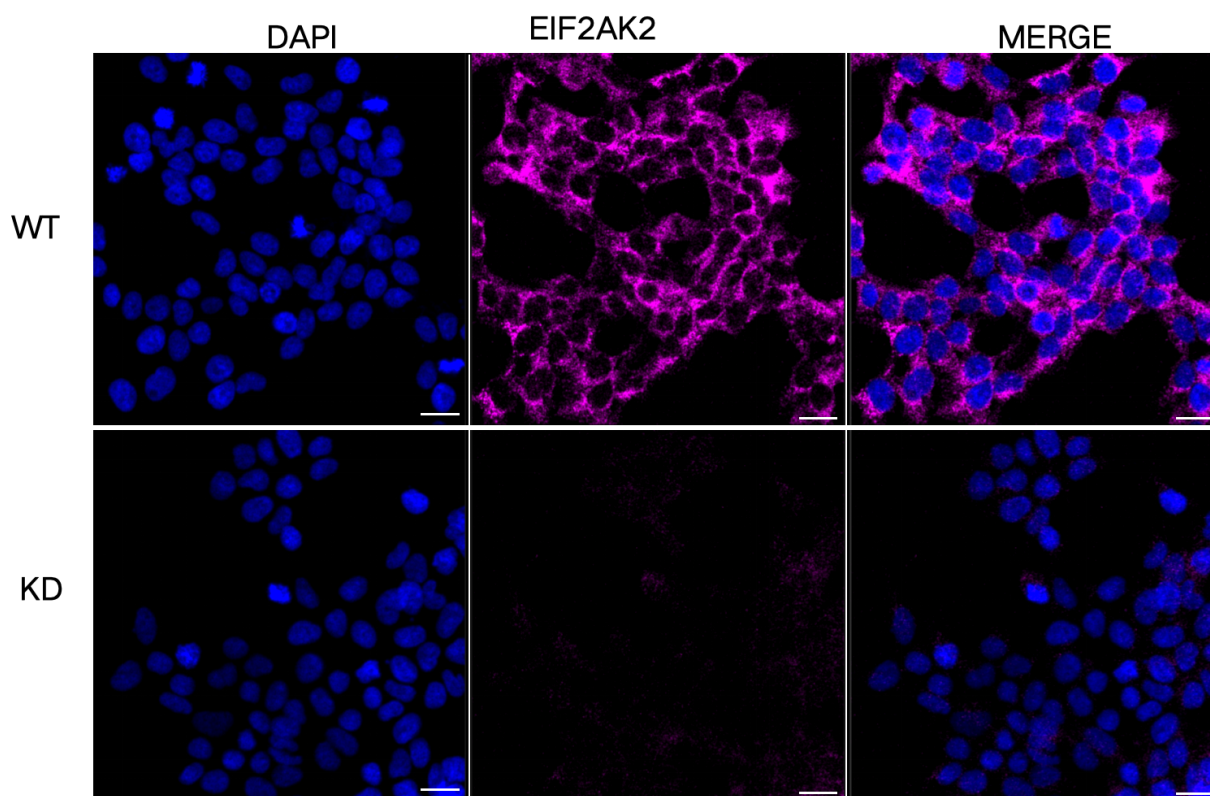
ORDERS

SALES@GENUINBIOTECH.COM
FAX: +1-540-855-7041

WWW.GENUINBIOTECH.COM



Validation of EIF2AK2 knockdown using flow cytometry. Wild-type(WT, Blue) and knockdown(KD, Green) HeLa cells were stained with anti-EIF2AK2 antibody (Cat#63730, 1:2,000) and analyzed using BD flow cytometer.



Immunocytochemical staining of HeLa cells using anti-EIF2AK2 antibody (Cat#63730, 1:1,000), Top panel: wild-type (WT); Bottom panel: EIF2AK2 shRNA knockdown (KD). Nuclei were stained blue with DAPI; EIF2AK2 was stained magenta with Alexa Fluor® 647. Scale bar, 20 μ m.