

KD-Validated Anti-Ring-Box 1 Mouse Monoclonal Antibody



Catalog #: 63745

Aliases

RBX1; Ring-Box 1; RNF75; ROC1; Regulator Of Cullins 1; BA554C12.1; E3 Ubiquitin-Protein Transferase RBX1; E3 Ubiquitin-Protein Ligase RBX1; RING Finger Protein 75; RING-Box Protein 1; Ring-Box 1, E3 Ubiquitin Protein Ligase; ZYP Protein; Protein ZYP; EC 2.3.2.27; EC 2.3.2.32; Rbx1

Background

Gene Name: RBX1

NCBI Gene Entry: [9978](#)

UniProt Entry: [P62877](#)

Application Information

Molecular Weight: Predicted, 12 kDa; observed, 17 kDa

Clonality: Mouse monoclonal antibody

Clone ID: 24GB7170

Species Reactivity: Human, mouse, rat

Applications Tested: Western blotting (WB), flow cytometry (FCM), immunocytochemistry (IC)

Immunogen

Recombinant protein of human Rbx1

Isotype

Mouse IgG1 kappa

Storage Buffer

Supplied in PBS (pH 7.4) containing 50% glycerol, and 0.02% sodium azide.

Storage

Store at -20 °C for one year.

Recommended Dilutions

Western Blotting (WB): 1:1,000-1:5,000

Flow Cytometry (FCM): 1:2,000

Immunocytochemistry (IC): 1:100-1:1,000

SUPPORT

SUPPORT@GENUINBIOTECH.COM
TEL: +1-540-855-7041

ORDERS

SALES@GENUINBIOTECH.COM
FAX: +1-540-855-7041

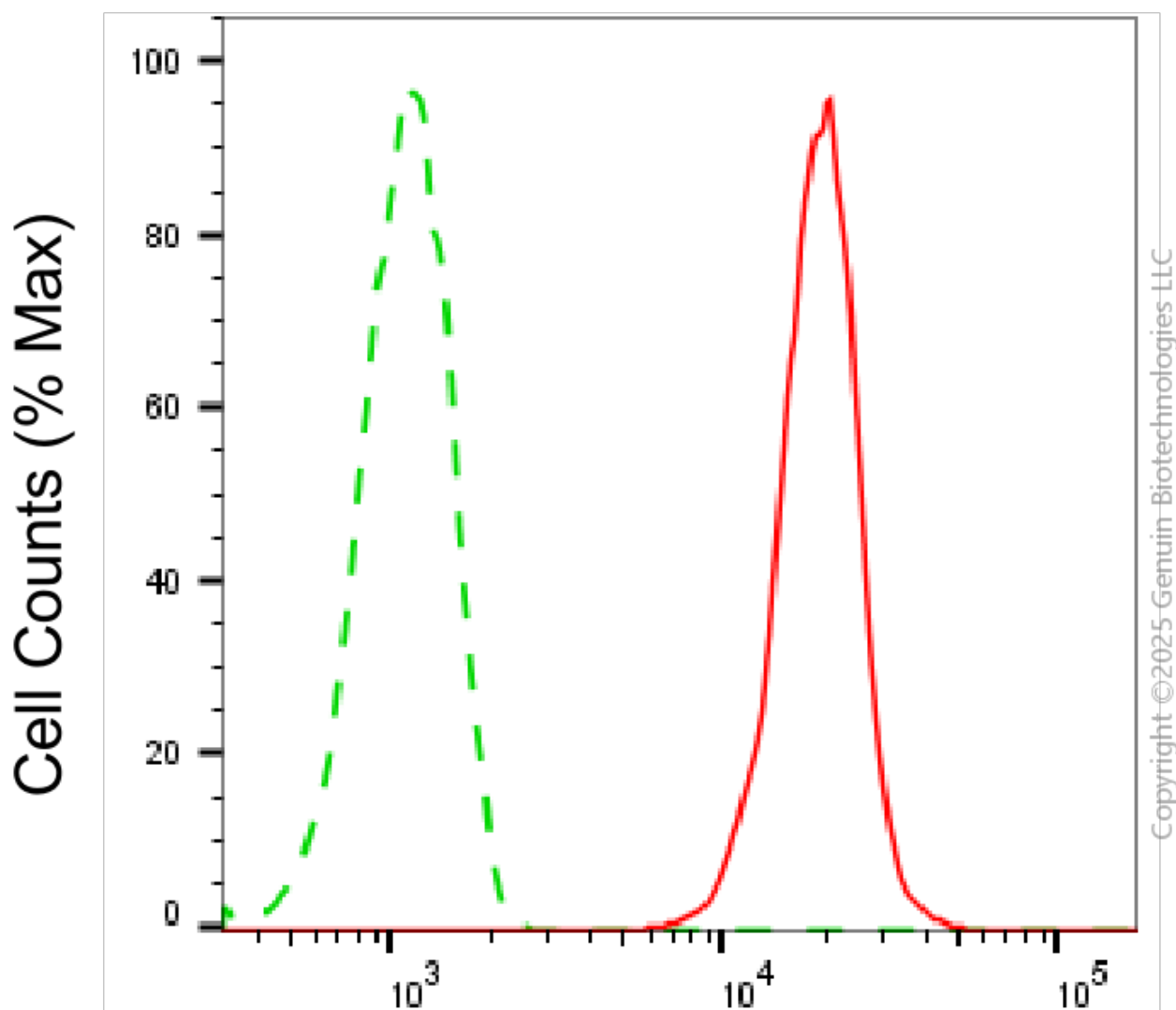
WWW.GENUINBIOTECH.COM

KD-Validated Anti-Ring-Box 1 Mouse Monoclonal Antibody

PAGE 2

Note: This product is for research use only.

Validation Data



Ring-box 1-Alexa Fluor® 647

Flow cytometric analysis of Ring-box 1 expression in C2C12 cells using anti-Ring-box 1 antibody (Cat#63745, 1:2,000). Green, isotype control; red, Ring-box 1.

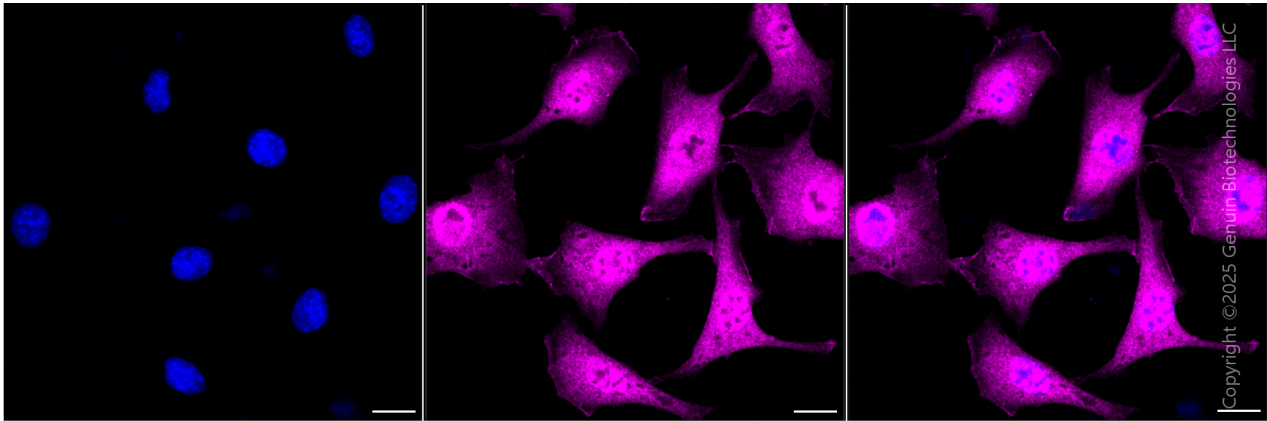
SUPPORT

SUPPORT@GENUINBIOTECH.COM
TEL: +1-540-855-7041

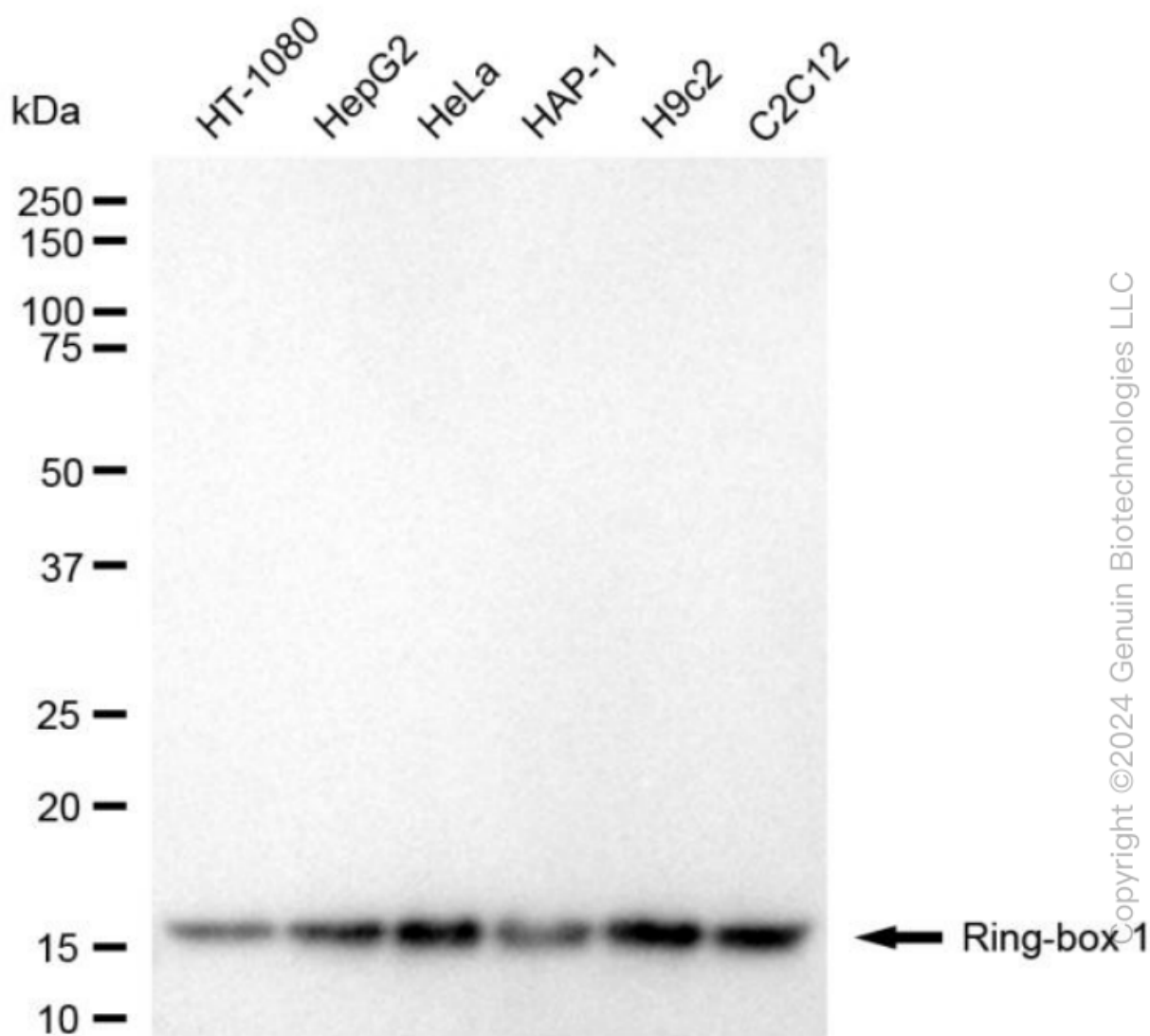
ORDERS

SALES@GENUINBIOTECH.COM
FAX: +1-540-855-7041

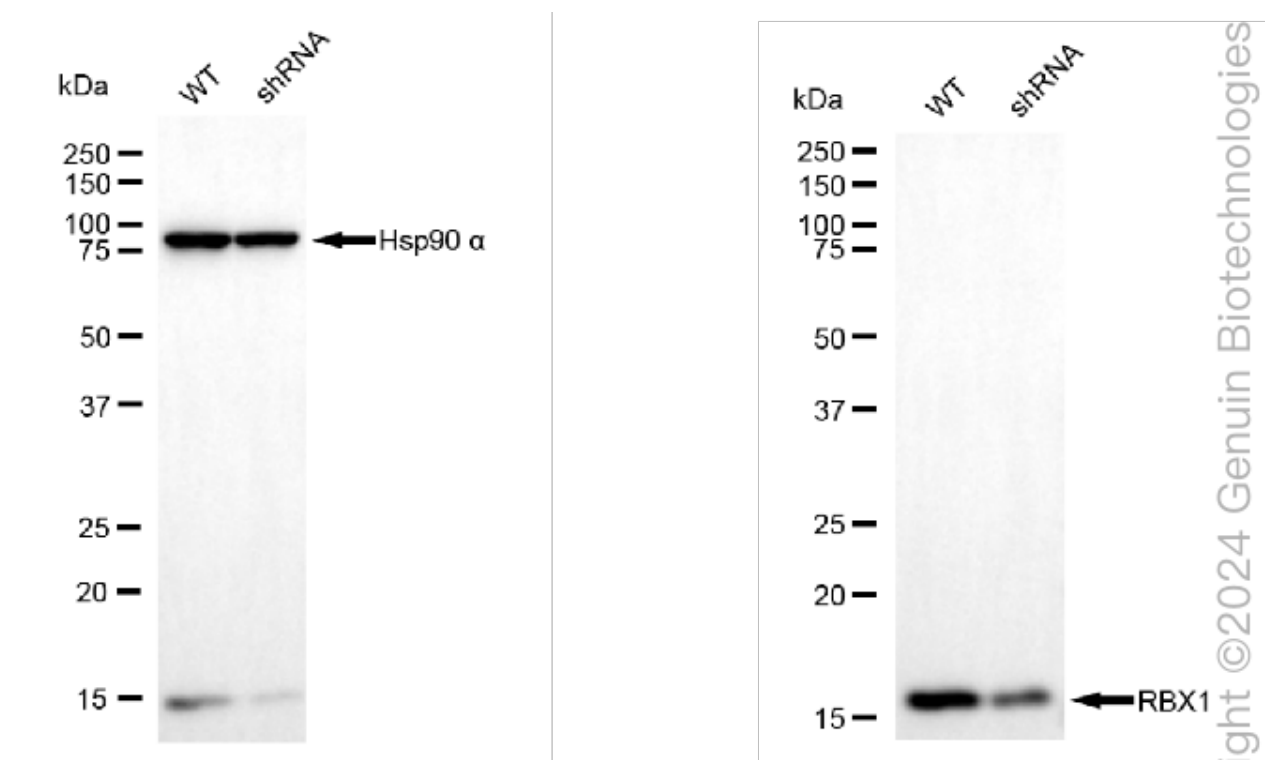
WWW.GENUINBIOTECH.COM



Immunocytochemical staining of C2C12 cells with anti-Ring-box 1 antibody (Cat#63745, 1:1,000) . Nuclei were stained blue with DAPI;Ring-box 1 was stained magenta with Alexa Fluor® 647. Images were taken using Leica stellaris 5. Protein abundance based on laser Intensity and smart gain:High. Scale bar, 20 μ m.



Western blotting analysis using anti-ring-box 1 antibody (Cat#63745). Total cell lysates (30 μ g) from various cell lines were loaded and separated by SDS-PAGE. The blot was incubated with anti-ring-box 1 antibody (Cat#63745, 1:5,000) and HRP-conjugated goat anti-mouse secondary antibody (Cat#101, 1:20,000) respectively. Image was developed using FeQ™ ECL Substrate Kit (Cat#226).



Western blotting analysis using anti-ring-box 1 antibody (Cat#63745). Ring-box 1 expression in wild-type (WT) and ring-box 1 (RBX1) shRNA knockdown (KD) HT-1080 cells with 30 µg of total cell lysates. Hsp90 α serves as a loading control. The blot was incubated with anti-ring-box 1 antibody (Cat#63745, 1:5,000) and HRP-conjugated goat anti-mouse secondary antibody (Cat#101, 1:20,000) respectively. Image was developed using FeQ™ ECL Substrate Kit (Cat#226).