

**Catalog #: 63746**

## Aliases

SUMO1; Small Ubiquitin Like Modifier 1; SMT3H3; SMT3C; GMP1; SUMO-1; OFC10; PIC1; UBL1; Ubiquitin-Homology Domain Protein PIC1; Small Ubiquitin-Related Modifier 1; Ubiquitin-Like Protein SMT3C; Ubiquitin-Like Protein UBL1; SMT3 Homolog 3; Sentrin; SMT3 Suppressor Of Mif Two 3 Homolog 1 (S. Cerevisiae); SMT3 Suppressor Of Mif Two 3 Homolog 1 (Yeast); SMT3 Suppressor Of Mif Two 3 Homolog 1; Ubiquitin-Like 1 (Sentrin); GAP Modifying Protein 1; GAP-Modifying Protein 1; SENP2; Smt3C; DAP1; SMT3

## Background

Gene Name: SUMO1

NCBI Gene Entry: [7341](#)

UniProt Entry: [P63165](#)

## Application Information

Molecular Weight: Predicted, 12 kDa; observed, 75 kDa

Clonality: Mouse monoclonal antibody

Clone ID: 24GB7175

Species Reactivity: Human, mouse, rat

Applications Tested: Western blotting (WB), flow cytometry (FCM), immunocytochemistry (IC)

## Immunogen

Recombinant protein of human SUMO1

## Isotype

Mouse IgG1

## Storage Buffer

Supplied in PBS (pH 7.4) containing 50% glycerol, and 0.02% sodium azide.

## Storage

Store at -20 °C for one year.

## Recommended Dilutions

Western Blotting (WB): 1:1,000-1:5,000

Flow Cytometry (FCM): 1:2,000

Immunocytochemistry (IC): 1:100-1:1,000

---

### SUPPORT

SUPPORT@GENUINBIOTECH.COM  
TEL: +1-540-855-7041

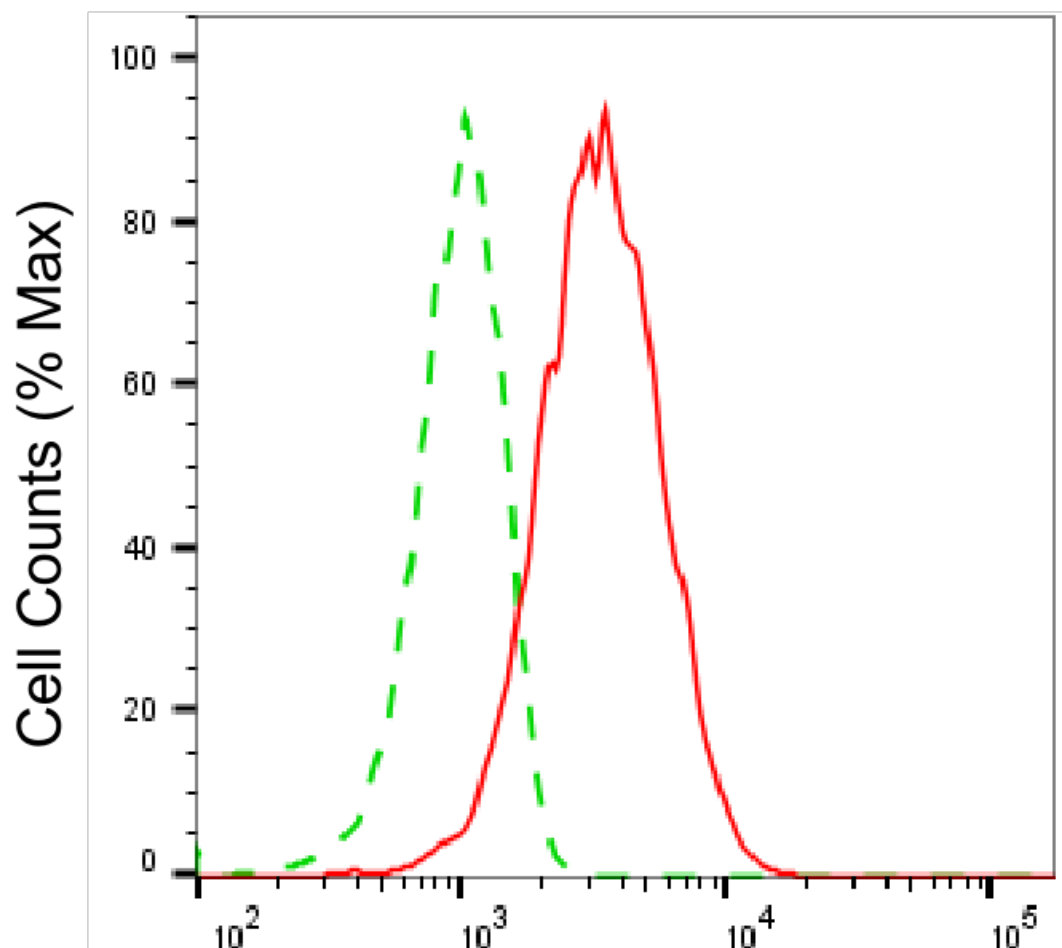
### ORDERS

SALES@GENUINBIOTECH.COM  
FAX: +1-540-855-7041

[WWW.GENUINBIOTECH.COM](http://WWW.GENUINBIOTECH.COM)

**Note:** This product is for research use only.

### Validation Data



Copyright ©2025 Genuin Biotechnologies LLC

## Small ubiquitin like modifier 1-Alexa Fluor® 647

Flow cytometric analysis of Small ubiquitin like modifier 1 expression in HAP-1 cells using anti-Small ubiquitin like modifier 1 antibody (Cat#63746, 1:2,000). Green, isotype control; red, Small ubiquitin like modifier 1.

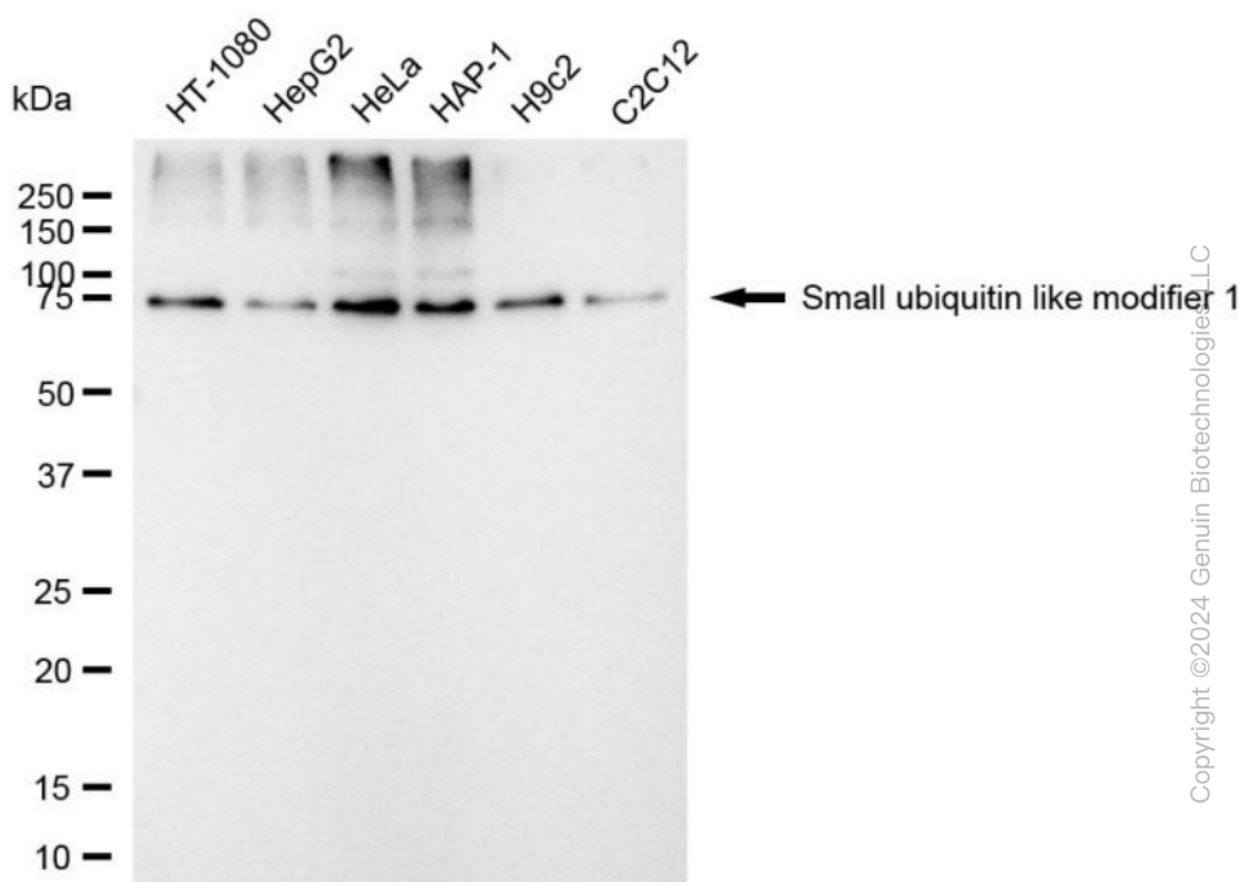
#### SUPPORT

SUPPORT@GENUINBIOTECH.COM  
TEL: +1-540-855-7041

#### ORDERS

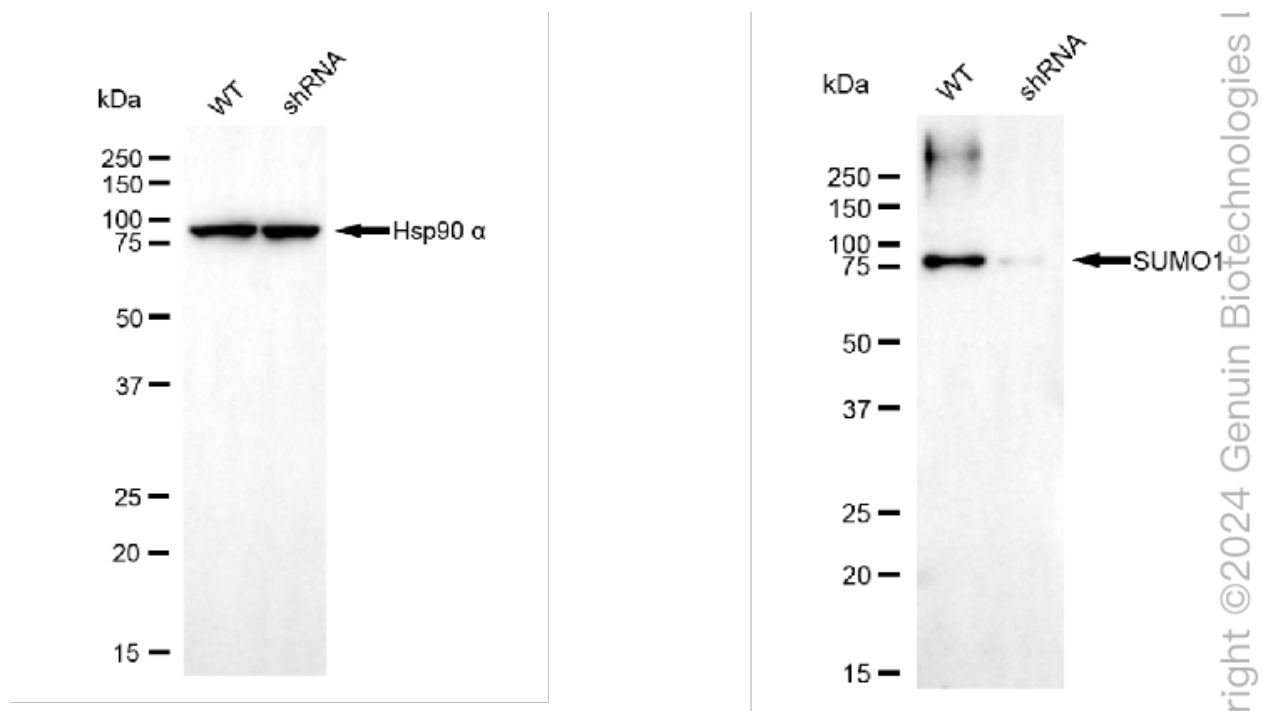
SALES@GENUINBIOTECH.COM  
FAX: +1-540-855-7041

WWW.GENUINBIOTECH.COM

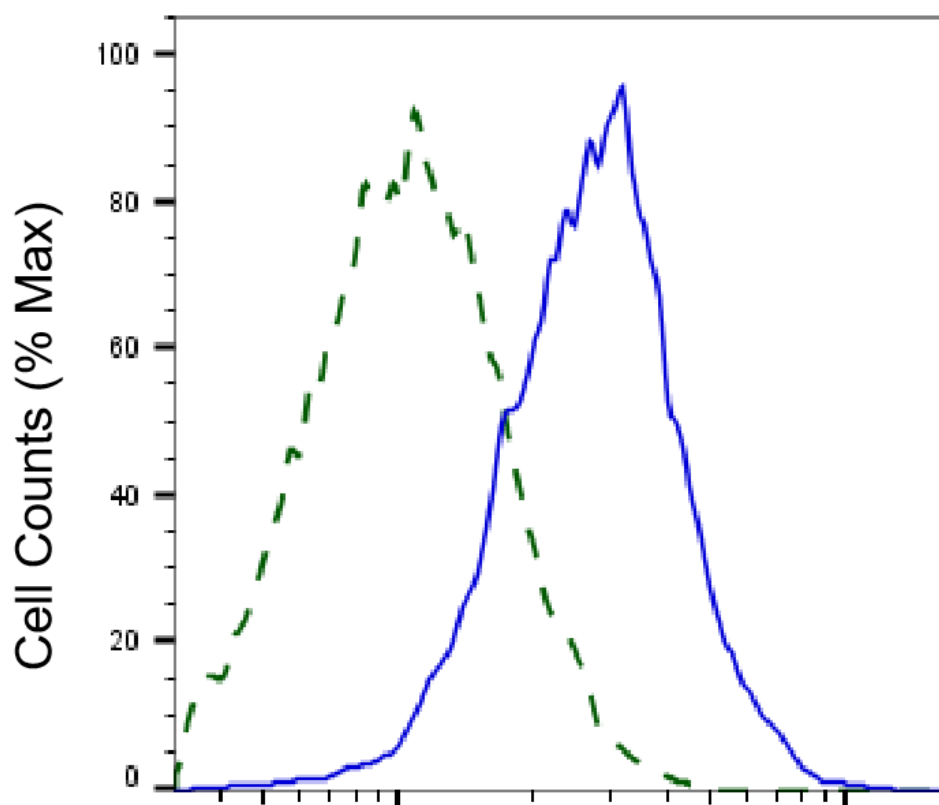


Copyright ©2024 Genuin Biotechnologies, LLC

Western blotting analysis using anti-small ubiquitin like modifier 1 antibody (Cat#63746). Total cell lysates (30  $\mu$ g) from various cell lines were loaded and separated by SDS-PAGE. The blot was incubated with anti-small ubiquitin like modifier 1 antibody (Cat#63746, 1:5,000) and HRP-conjugated goat anti-mouse secondary antibody (Cat#101, 1:20,000) respectively. Image was developed using FeQ™ ECL Substrate Kit (Cat#226).



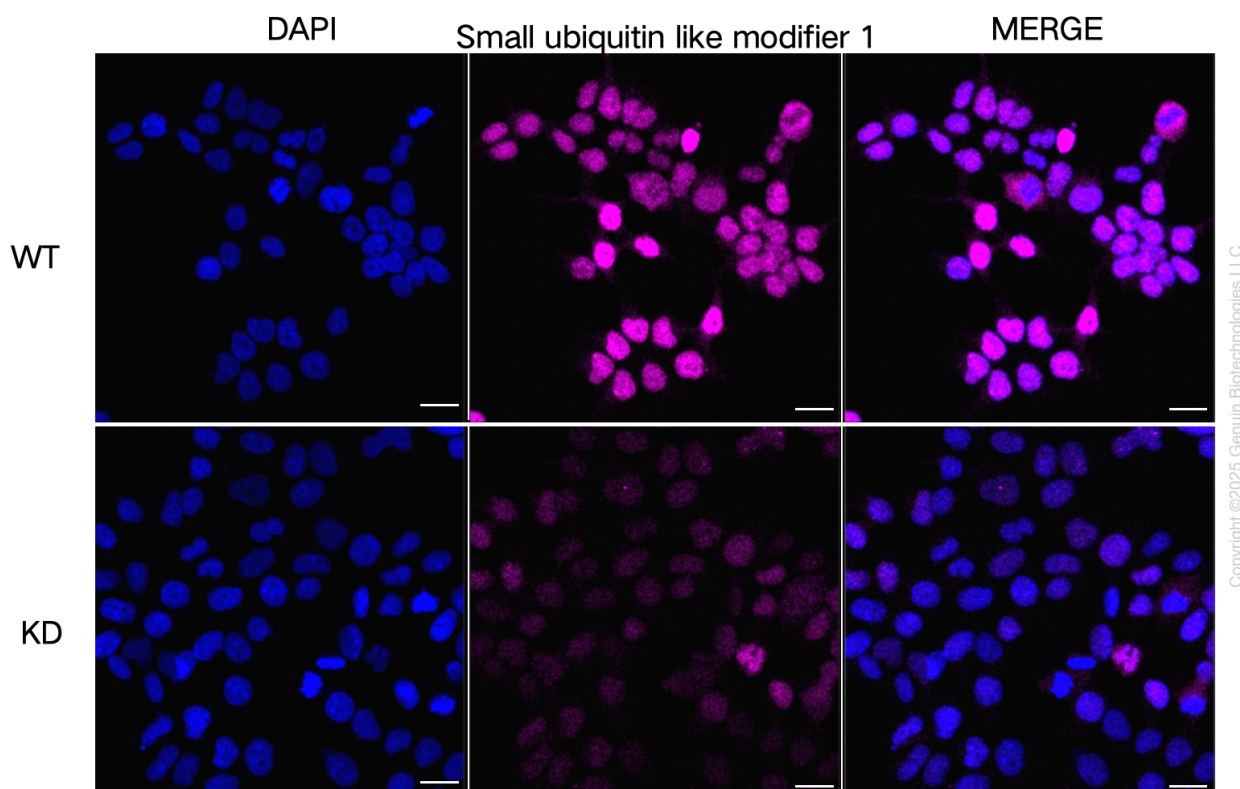
Western blotting analysis using anti-small ubiquitin like modifier 1 antibody (Cat#63746). Small ubiquitin like modifier 1 expression in wild-type (WT) and small ubiquitin like modifier 1 (SUMO1) shRNA knockdown (KD) HeLa cells with 20  $\mu$ g of total cell lysates. Hsp90  $\alpha$  serves as a loading control. The blot was incubated with anti-small ubiquitin like modifier 1 antibody (Cat#63746, 1:5,000) and HRP-conjugated goat anti-mouse secondary antibody (Cat#101, 1:20,000) respectively. Image was developed using FeQ™ ECL Substrate Kit (Cat#226).



Copyright ©2025 Genuin Biotechnologies LLC

## Small ubiquitin like modifier 1-Alexa Fluor® 647

Validation of Small ubiquitin like modifier 1 knockdown using flow cytometry. Wild-type(WT, Blue) and knockdown(KD, Green) HeLa cells were stained with anti-Small ubiquitin like modifier 1 antibody (Cat#63746, 1:2,000) and analyzed using BD flow cytometer.



Immunocytochemical staining of HeLa cells using anti-Small ubiquitin like modifier 1 antibody (Cat#63746, 1:1,000), Top panel: wild-type (WT); Bottom panel: Small ubiquitin like modifier 1 shRNA knockdown (KD). Nuclei were stained blue with DAPI; Small ubiquitin like modifier 1 was stained magenta with Alexa Fluor® 647. Scale bar, 20  $\mu$ m.