

KD-Validated Anti-EZH2 Mouse Monoclonal Antibody



Catalog #: 63751

Aliases

EZH2; Enhancer Of Zeste 2 Polycomb Repressive Complex 2 Subunit 2; ENX-1; KMT6; KMT6A; Histone-Lysine N-Methyltransferase EZH2; Lysine N-Methyltransferase 6; Enhancer Of Zeste Homolog 2; EZH1; Enhancer Of Zeste (Drosophila) Homolog 2; Enhancer Of Zeste Homolog 2 (Drosophila); EC 2.1.1.356; EC 2.1.1.43; EC 2.1.1; EZH2b; ENX1; WVS2; WVS

Background

Gene Name: EZH2

NCBI Gene Entry: [2146](#)

UniProt Entry: [Q15910](#)

Application Information

Molecular Weight: Predicted, 85 kDa; observed, 98 kDa

Clonality: Mouse monoclonal antibody

Clone ID: 24GB7200

Species Reactivity: Human

Applications Tested: Western blotting (WB), flow cytometry (FCM), immunocytochemistry (IC)

Immunogen

Recombinant protein of human EZH2

Isotype

Mouse IgG1 kappa

Storage Buffer

Supplied in PBS (pH 7.4) containing 50% glycerol, and 0.02% sodium azide.

Storage

Store at -20 °C for one year.

Recommended Dilutions

Western Blotting (WB): 1:1,000-1:5,000

Flow Cytometry (FCM): 1:2,000

Immunocytochemistry (IC): 1:100-1:1,000

SUPPORT

SUPPORT@GENUINBIOTECH.COM
TEL: +1-540-855-7041

ORDERS

SALES@GENUINBIOTECH.COM
FAX: +1-540-855-7041

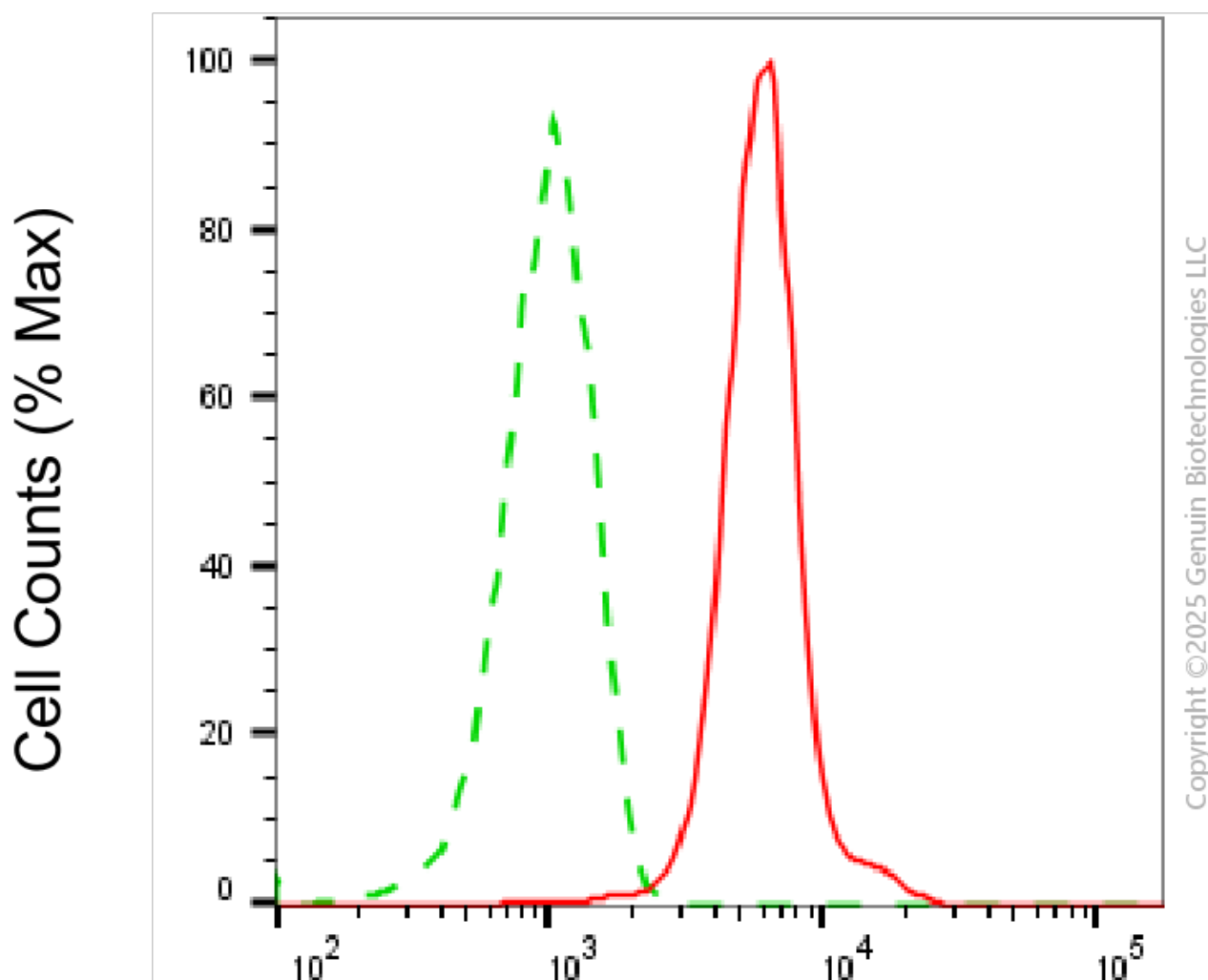
WWW.GENUINBIOTECH.COM

KD-Validated Anti-EZH2 Mouse Monoclonal Antibody

PAGE 2

Note: This product is for research use only.

Validation Data



EZH2-Alexa Fluor® 647

Flow cytometric analysis of EZH2 expression in HAP-1 cells using anti-EZH2 antibody (Cat#63751, 1:2,000). Green, isotype control; red, EZH2.

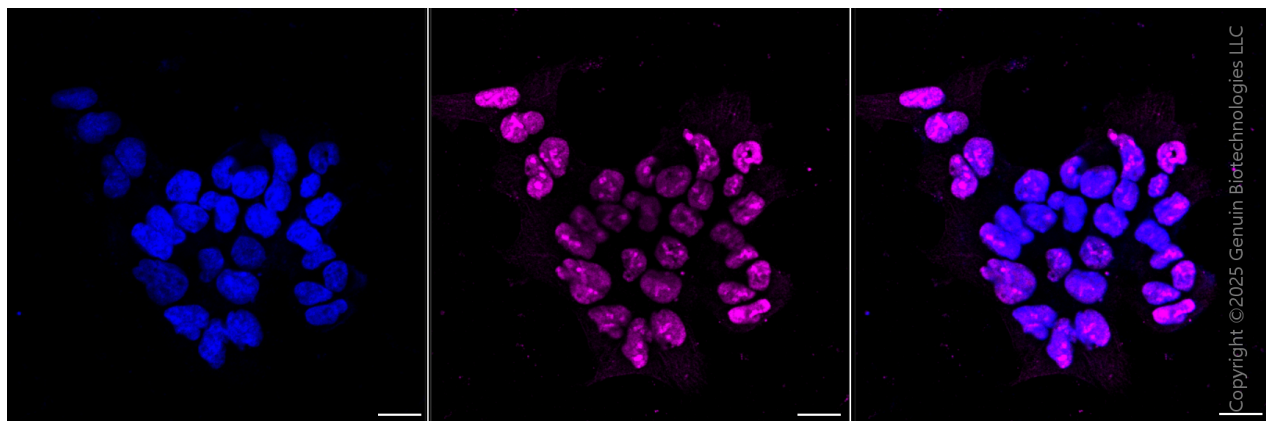
SUPPORT

SUPPORT@GENUINBIOTECH.COM
TEL: +1-540-855-7041

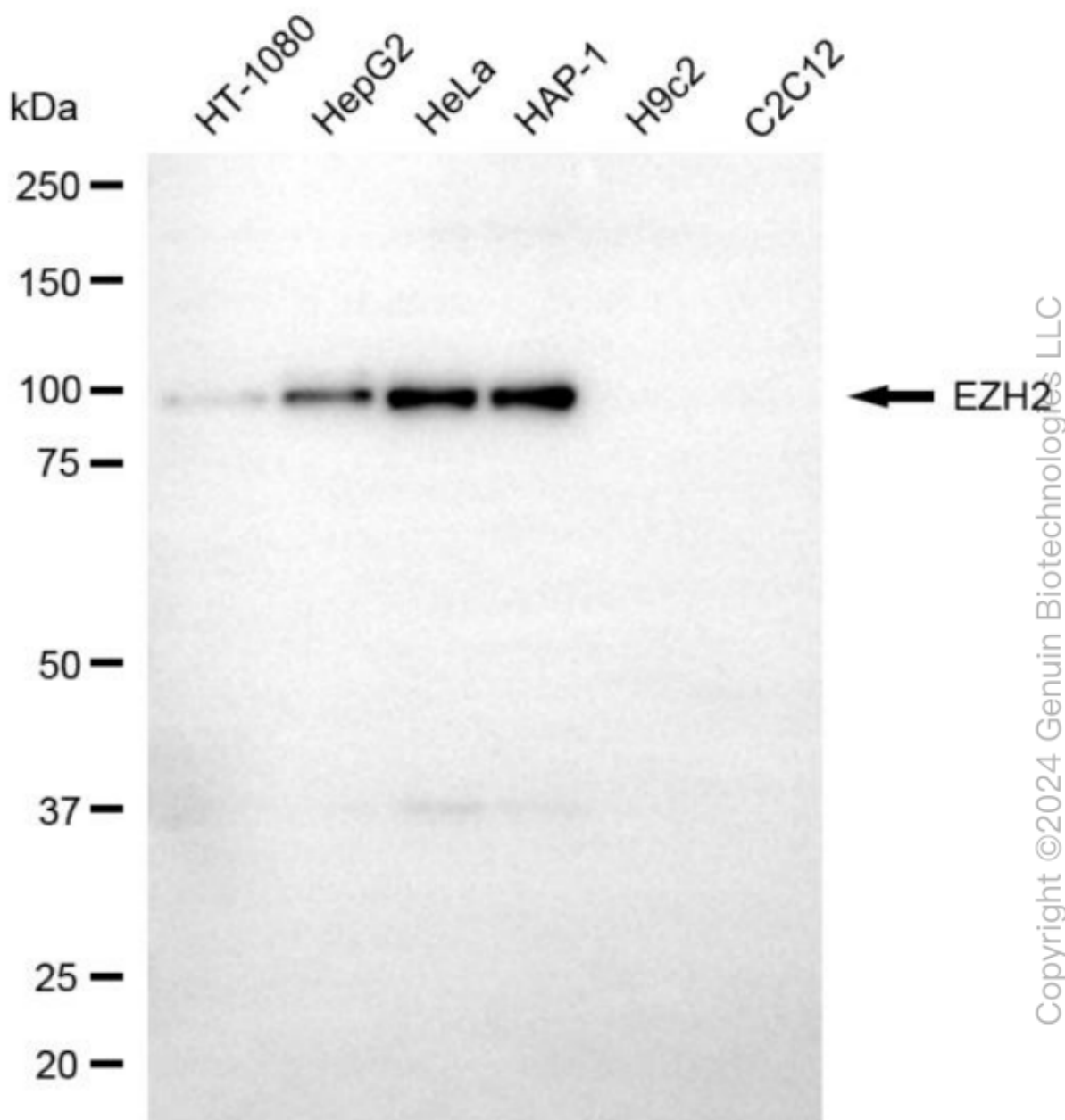
ORDERS

SALES@GENUINBIOTECH.COM
FAX: +1-540-855-7041

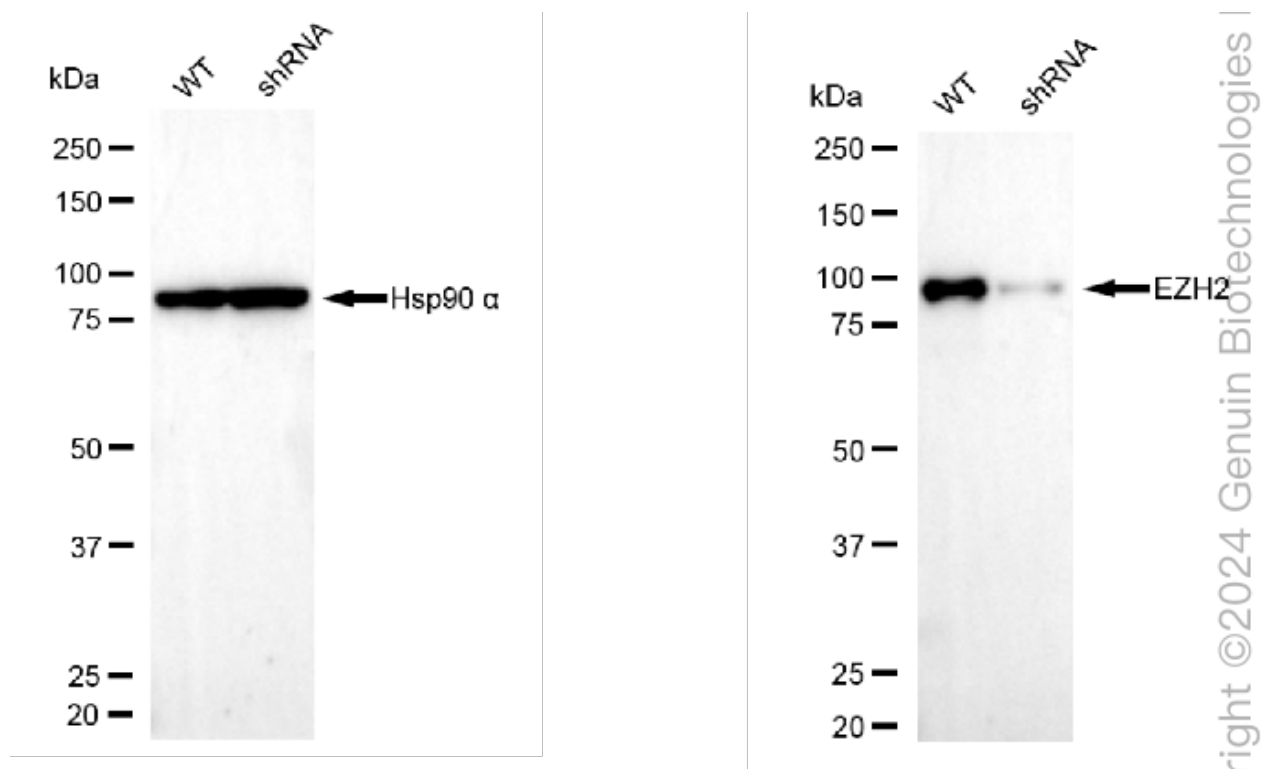
WWW.GENUINBIOTECH.COM



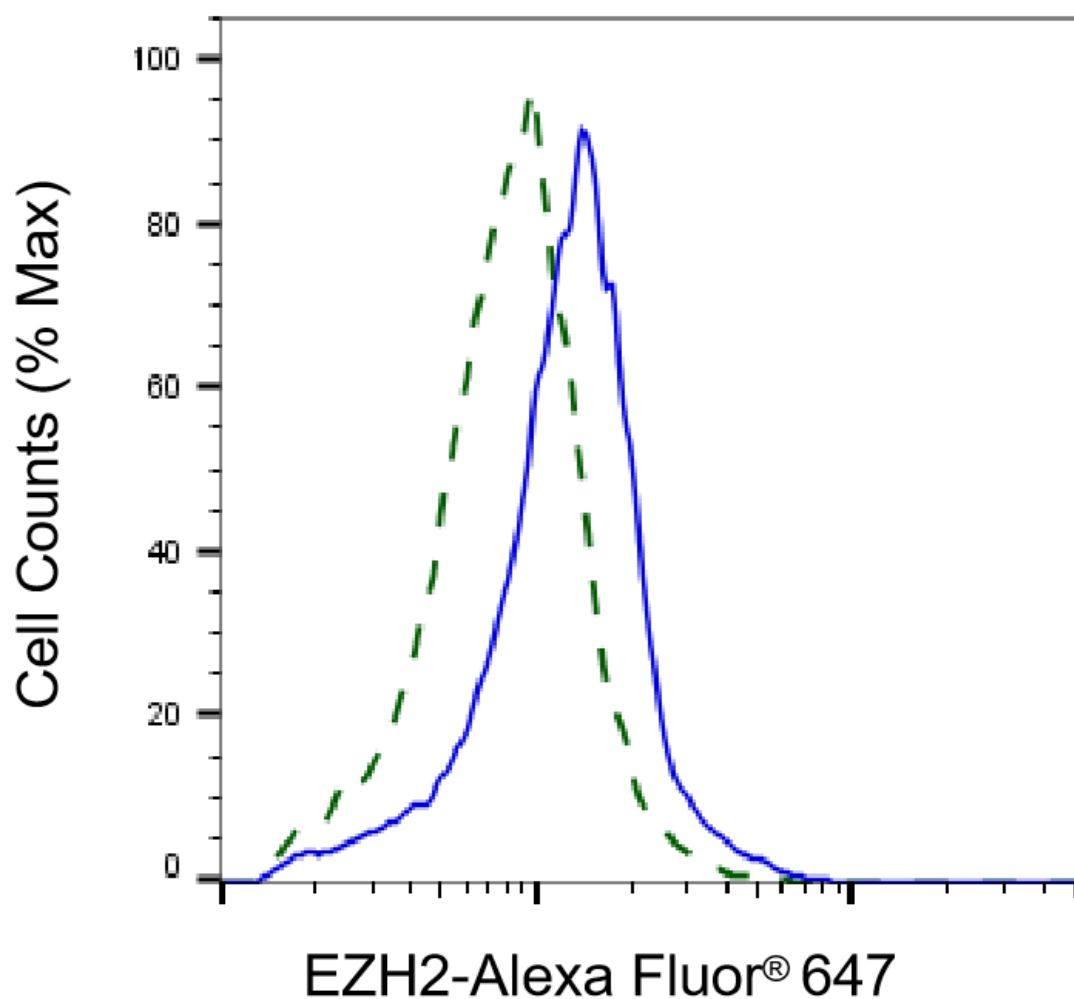
Immunocytochemical staining of HAP-1 cells with anti-EZH2 antibody (Cat#63751, 1:1,000) . Nuclei were stained blue with DAPI; EZH2 was stained magenta with Alexa Fluor® 647. Images were taken using Leica stellaris 5. Protein abundance based on laser Intensity and Smart Gain□ High. Scale bar, 20 μ m.



Western blotting analysis using anti-EZH2 antibody (Cat#63751). Total cell lysates (30 µg) from various cell lines were loaded and separated by SDS-PAGE. The blot was incubated with anti-EZH2 antibody (Cat#63751, 1:5,000) and HRP-conjugated goat anti-mouse secondary antibody (Cat#101, 1:20,000) respectively. Image was developed using NaQ™ ECL Substrate Kit (Cat#716). EZH2, enhancer of zeste 2 polycomb repressive complex 2 subunit.



Western blotting analysis using anti-EZH2 antibody (Cat#63751). EZH2 expression in wild-type (WT) and EZH2 shRNA knockdown (KD) HeLa cells with 20 μ g of total cell lysates. β -Tubulin serves as a loading control. The blot was incubated with anti-EZH2 antibody (Cat#63751, 1:5,000) and HRP-conjugated goat anti-mouse secondary antibody (Cat#101, 1:20,000) respectively. Image was developed using FeQ™ ECL Substrate Kit (Cat#226).



Copyright ©2025 Genuin Biotechnologies LLC

Validation of EZH2 knockdown using flow cytometry. Wild-type(WT, Blue) and knockdown(KD, Green) HeLa cells were stained with anti-EZH2 antibody (Cat#63751, 1:2,000) and analyzed using BD flow cytometer.