

KD-Validated Anti-GAPDH Rabbit Polyclonal Antibody



Catalog #: 63763

Aliases

GAPDH; Glyceraldehyde-3-Phosphate Dehydrogenase; GAPD; Peptidyl-Cysteine S-Nitrosylase GAPDH; EC 1.2.1.12; Epididymis Secretory Sperm Binding Protein Li 162eP; Oct1 Coactivator In S Phase, 38 Kd Component; Aging-Associated Gene 9 Protein; OCAS, P38 Component; HEL-S-162eP; EC 2.6.99.-; EC 1.2.1; G3PD

Background

Gene Name: GAPDH

NCBI Gene Entry: [2597](#)

UniProt Entry: [P04406](#)

Application Information

Molecular Weight: Predicted, 36 kDa; observed, 36 kDa

Clonality: Rabbit polyclonal antibody

Species Reactivity: Human, mouse, rat

Applications Tested: Western blotting (WB)

Immunogen

A synthesized peptide derived from human GAPDH

Isotype

Rabbit IgG

Storage Buffer

Supplied in PBS (pH 7.4) containing 50% glycerol, and 0.02% sodium azide.

Storage

Store at -20 °C for one year.

Recommended Dilutions

Western Blotting (WB): 1:1,000-1:5,000

Note: This product is for research use only.

Validation Data

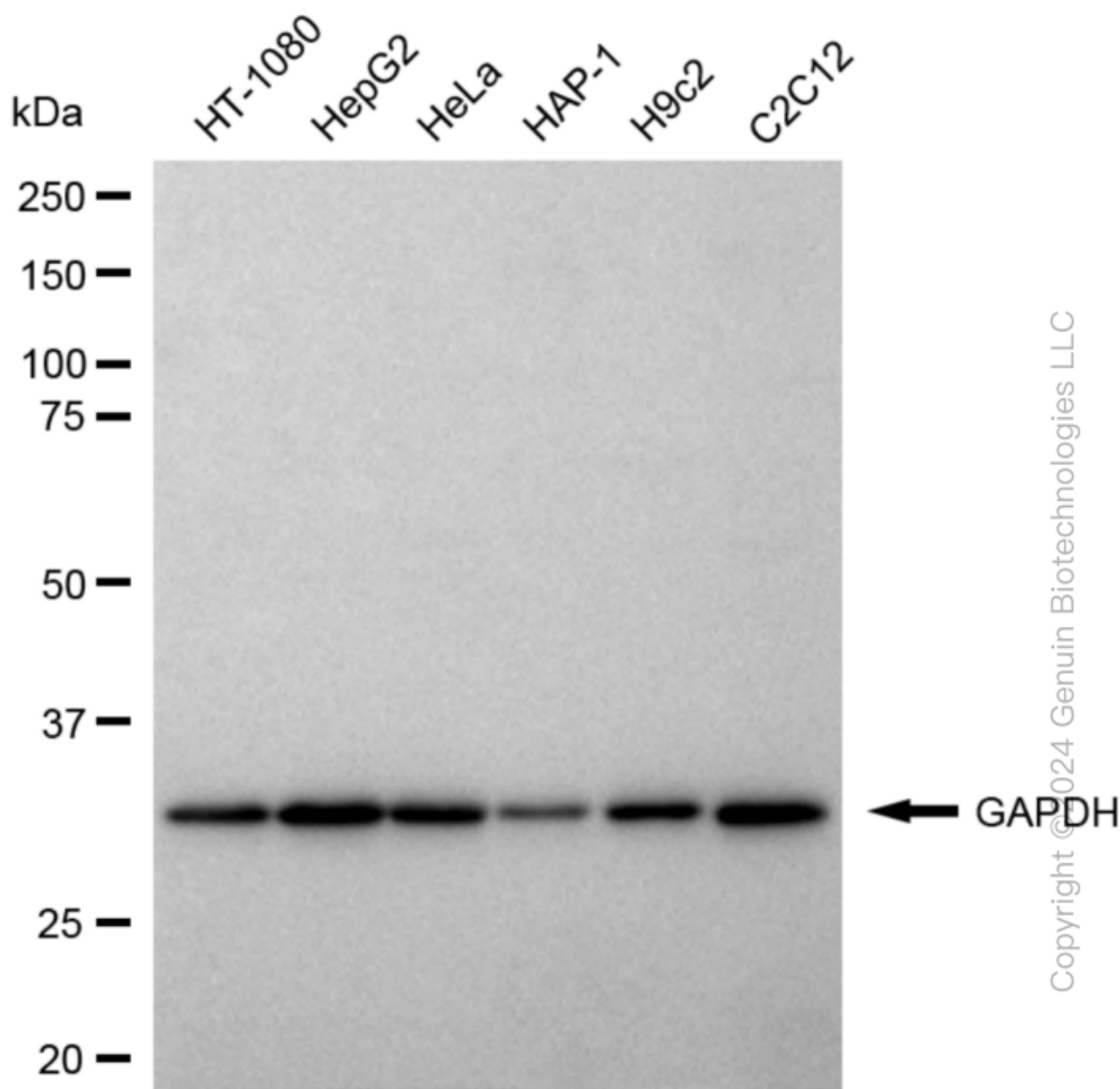
SUPPORT

SUPPORT@GENUINBIOTECH.COM
TEL: +1-540-855-7041

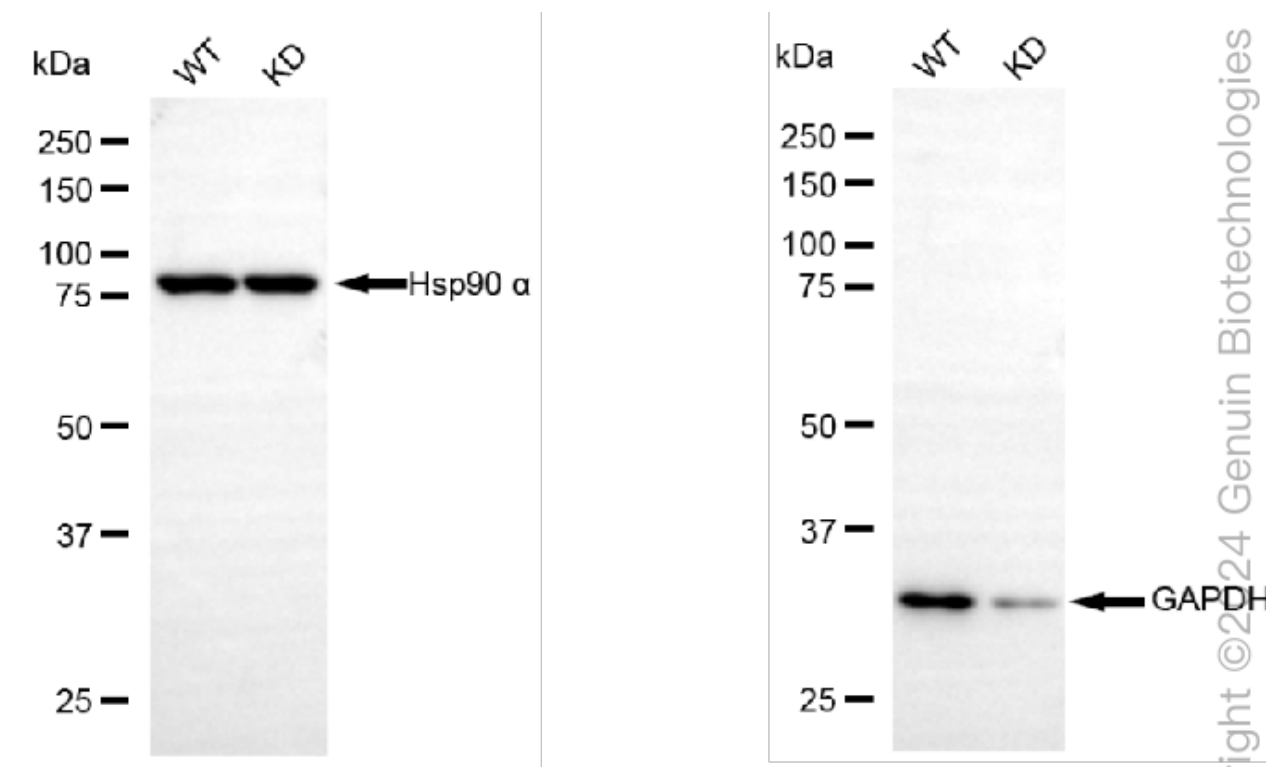
ORDERS

SALES@GENUINBIOTECH.COM
FAX: +1-540-855-7041

WWW.GENUINBIOTECH.COM



Western blotting analysis using anti-GAPDH antibody (Cat#63763). Total cell lysates (30 μ g) from various cell lines were loaded and separated by SDS-PAGE. The blot was incubated with anti-GAPDH antibody (Cat#63763, 1:5,000) and HRP-conjugated goat anti-rabbit secondary antibody (Cat#201, 1:20,000) respectively. Image was developed using FeQ™ ECL Substrate Kit (Cat#226).



Western blotting analysis using anti-GAPDH antibody (Cat#63763). GAPDH expression in wild type (WT) and GAPDH knockdown (KD) HSHC cells with 20 µg of total cell lysates. Hsp90 α serves as a loading control. The blot was incubated with anti-GAPDH antibody (Cat#63763, 1:5,000) and HRP-conjugated goat anti-rabbit secondary antibody (Cat#201, 1:20,000) respectively. Image was developed using NaQ™ ECL Substrate Kit (Cat#716).