

# KD-Validated Anti-RB1 Rabbit Polyclonal Antibody



**Catalog #: 63765**

## Aliases

RB1; RB Transcriptional Corepressor 1; PPP1R130; RB; Protein Phosphatase 1, Regulatory Subunit 130; Prepro-Retinoblastoma-Associated Protein; Retinoblastoma-Associated Protein; Retinoblastoma 1; P110-RB1; P105-Rb; Pp110; OSRC; PRb; Retinoblastoma Susceptibility Protein; Osteosarcoma; Rb

## Background

Gene Name: RB1

NCBI Gene Entry: [5925](#)

UniProt Entry: [P06400](#)

## Application Information

Molecular Weight: Predicted, 106 kDa; observed, 115 kDa

Clonality: Rabbit polyclonal antibody

Species Reactivity: Human

Applications Tested: Western blotting (WB)

## Immunogen

A synthesized peptide derived from human RB1

## Isotype

Rabbit IgG

## Storage Buffer

Supplied in PBS (pH 7.4) containing 50% glycerol, and 0.02% sodium azide.

## Storage

Store at -20 °C for one year.

## Recommended Dilutions

Western Blotting (WB): 1:1,000-1:5,000

**Note:** This product is for research use only.

## Validation Data

---

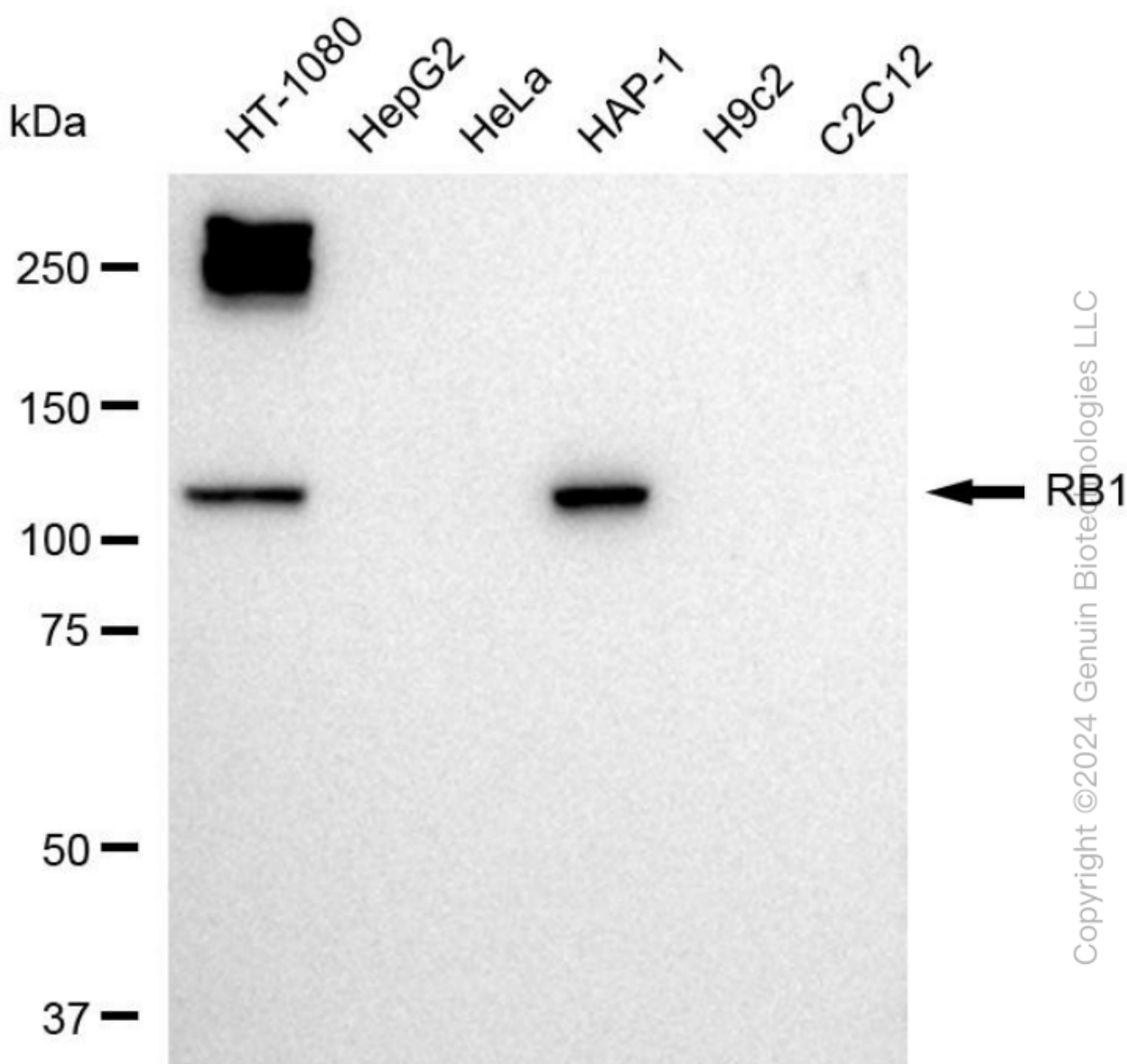
### SUPPORT

SUPPORT@GENUINBIOTECH.COM  
TEL: +1-540-855-7041

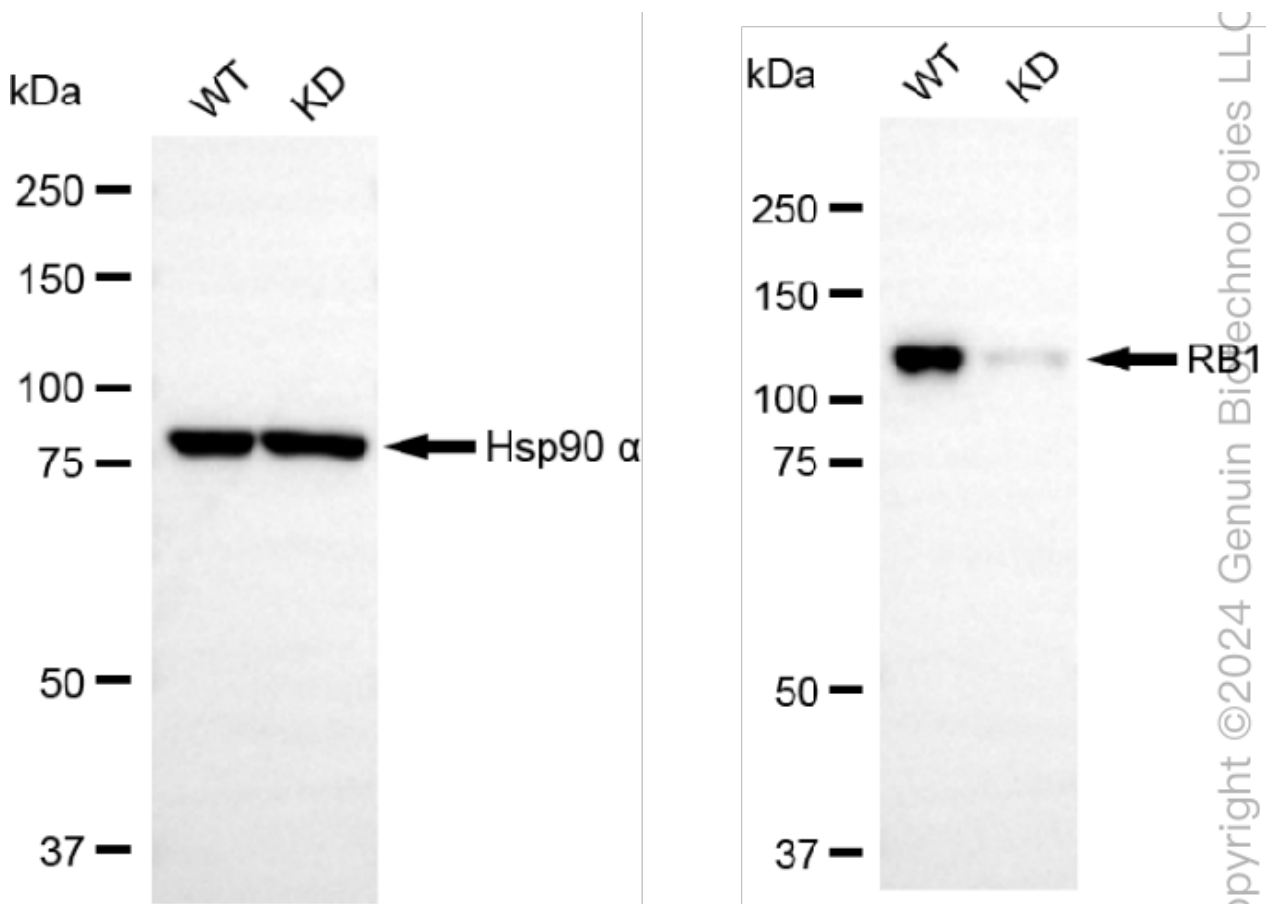
### ORDERS

SALES@GENUINBIOTECH.COM  
FAX: +1-540-855-7041

[WWW.GENUINBIOTECH.COM](http://WWW.GENUINBIOTECH.COM)



Western blotting analysis using anti-RB1 antibody (Cat#63765). Total cell lysates (30 µg) from various cell lines were loaded and separated by SDS-PAGE. The blot was incubated with anti-RB1 antibody (Cat#63765, 1:5,000) and HRP-conjugated goat anti-rabbit secondary antibody (Cat#201, 1:20,000) respectively. Image was developed using FeQ™ ECL Substrate Kit (Cat#226).



Western blotting analysis using anti-RB1 antibody (Cat#63765). RB1 expression in wild type (WT) and RB1 knockdown (KD) HSHC cells with 20 µg of total cell lysates. Hsp90  $\alpha$  serves as a loading control. The blot was incubated with anti-RB1 antibody (Cat#63765, 1:5,000) and HRP-conjugated goat anti-rabbit secondary antibody (Cat#201, 1:20,000) respectively. Image was developed using FeQ™ ECL Substrate Kit (Cat#226).