

KD-Validated Anti-CFAP298 Mouse Monoclonal Antibody



Catalog #: 63796

Aliases

CFAP298; Cilia And Flagella Associated Protein 298; C21orf48; C21orf59; DNAAF16; CILD26; FBB18; Kur; Cilia- And Flagella-Associated Protein 298; Dynein Axonemal Assembly Factor 16; Protein Kurly Homolog; FLJ20467; Prostate Cancer Upregulated Protein 1; Chromosome 21 Open Reading Frame 48; Chromosome 21 Open Reading Frame 59; Kurly Homolog (Zebrafish); UPF0769 Protein C21orf59; Kurly Homolog

Background

Gene Name: CFAP298

NCBI Gene Entry: [56683](#)

UniProt Entry: [P57076](#)

Application Information

Molecular Weight: Predicted, 33 kDa; observed, 33 kDa

Clonality: Mouse monoclonal antibody

Clone ID: 24GB7915

Species Reactivity: Human

Applications Tested: Western blotting (WB), flow cytometry (FCM), immunocytochemistry (IC)

Immunogen

Recombinant protein of human C21orf59

Isotype

Mouse IgG1

Storage Buffer

Supplied in PBS (pH 7.4) containing 50% glycerol, and 0.02% sodium azide.

Storage

Store at -20 °C for one year.

Recommended Dilutions

Western Blotting (WB): 1:500-1:2,500

Flow Cytometry (FCM): 1:1,000

Immunocytochemistry (IC): 1:100-1:1,000

SUPPORT

SUPPORT@GENUINBIOTECH.COM
TEL: +1-540-855-7041

ORDERS

SALES@GENUINBIOTECH.COM
FAX: +1-540-855-7041

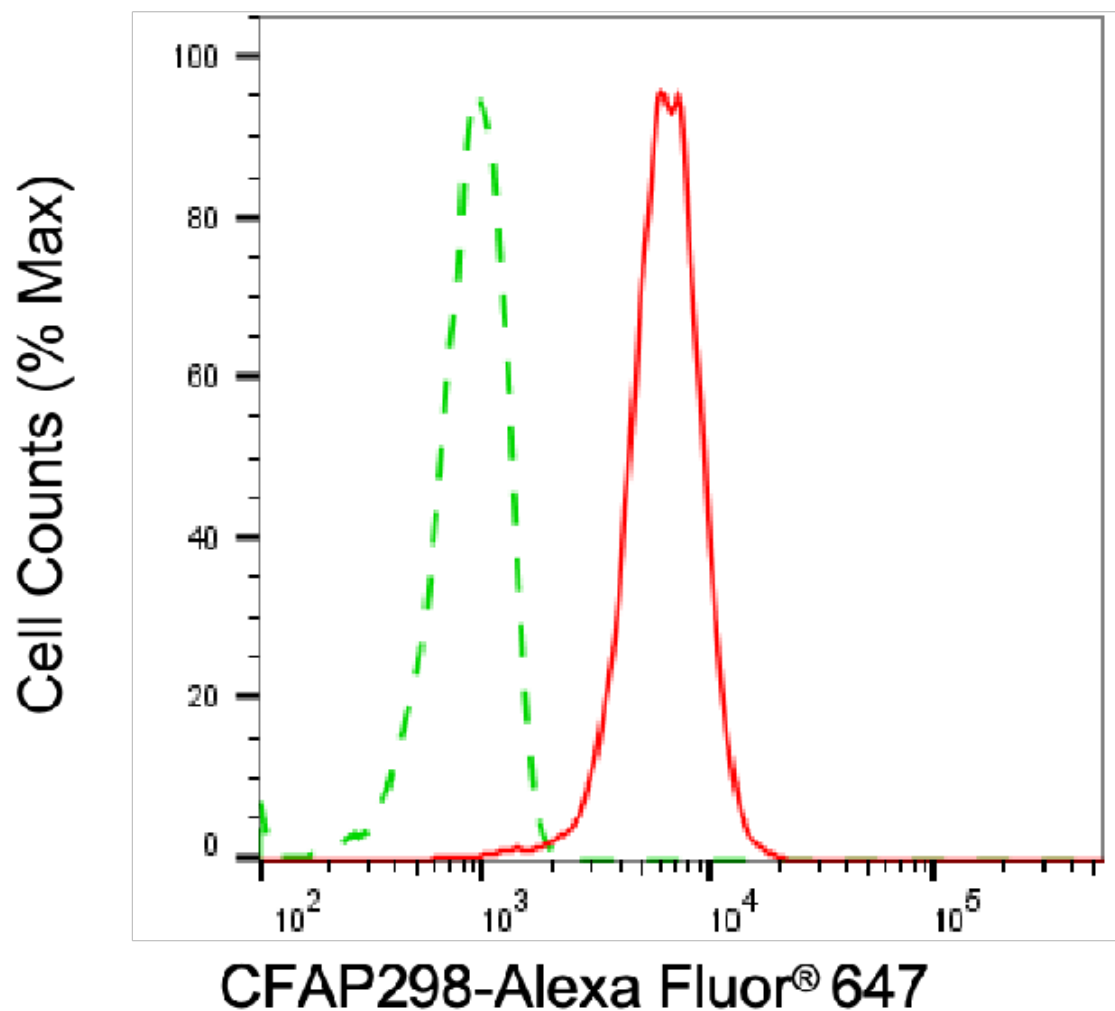
WWW.GENUINBIOTECH.COM

KD-Validated Anti-CFAP298 Mouse Monoclonal Antibody

PAGE 2

Note: This product is for research use only.

Validation Data



Copyright ©2025 Genuin Biotechnologies LLC

Flow cytometric analysis of CFAP298 expression in HepG2 cells using anti-CFAP298 antibody (Cat#63796, 1:1,000). Green, isotype control; red, CFAP298.

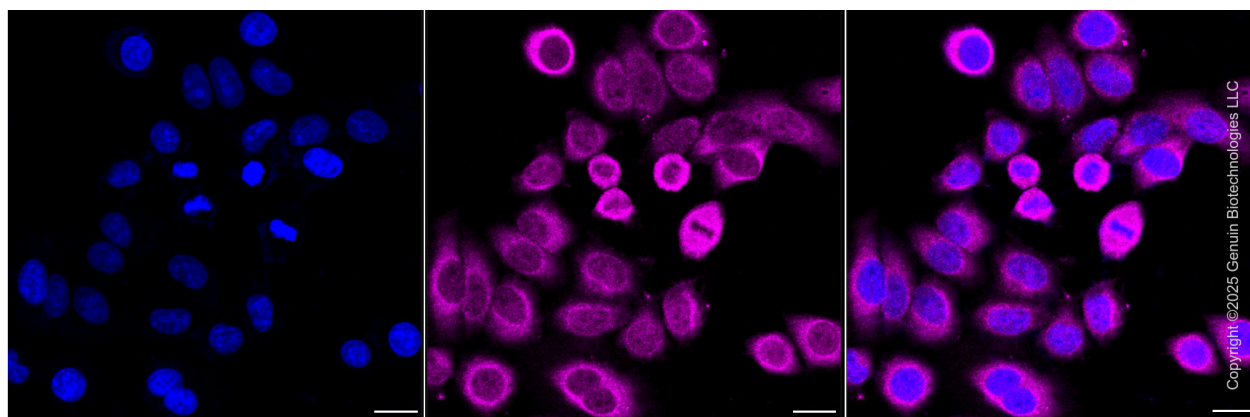
SUPPORT

SUPPORT@GENUINBIOTECH.COM
TEL: +1-540-855-7041

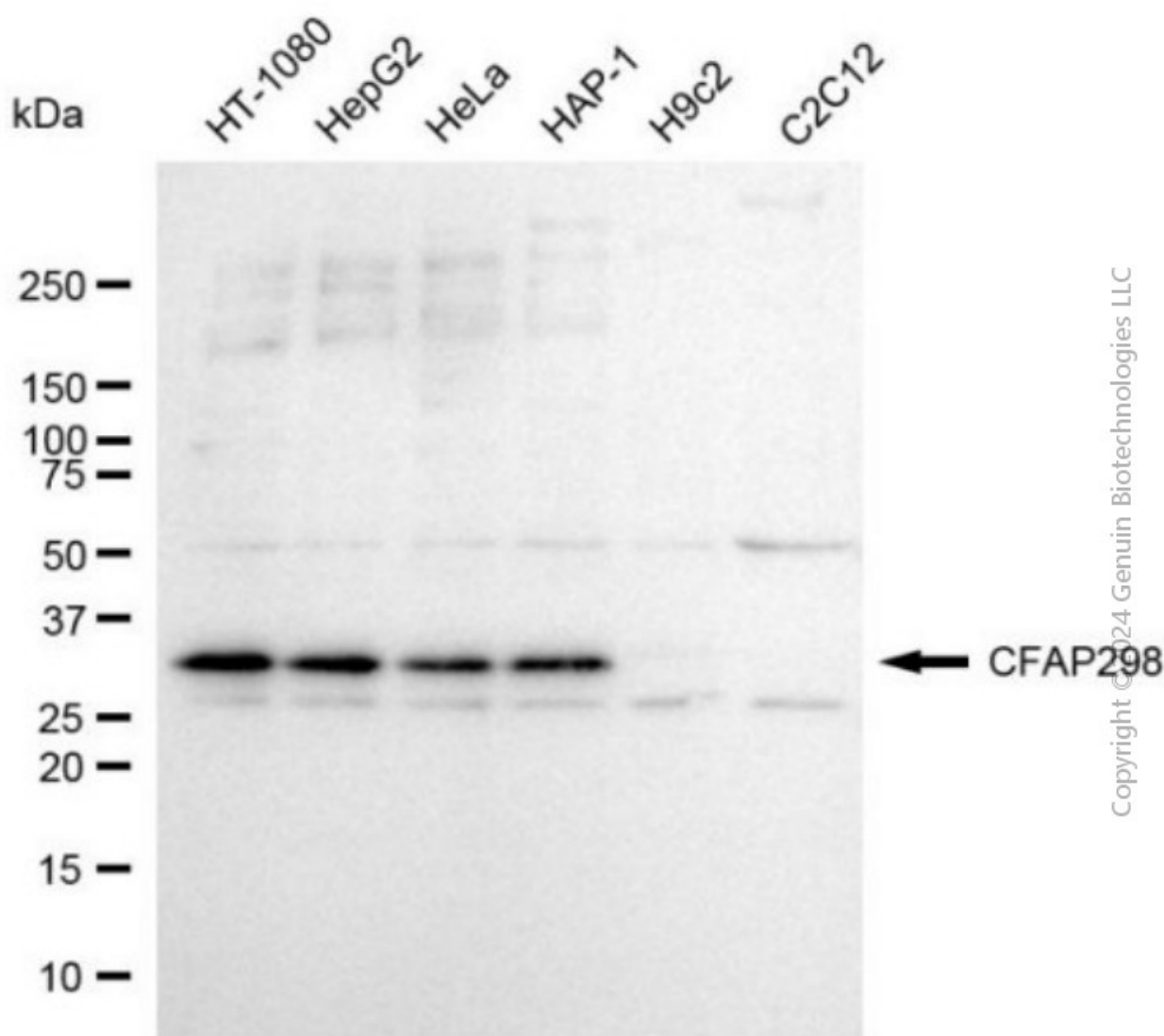
ORDERS

SALES@GENUINBIOTECH.COM
FAX: +1-540-855-7041

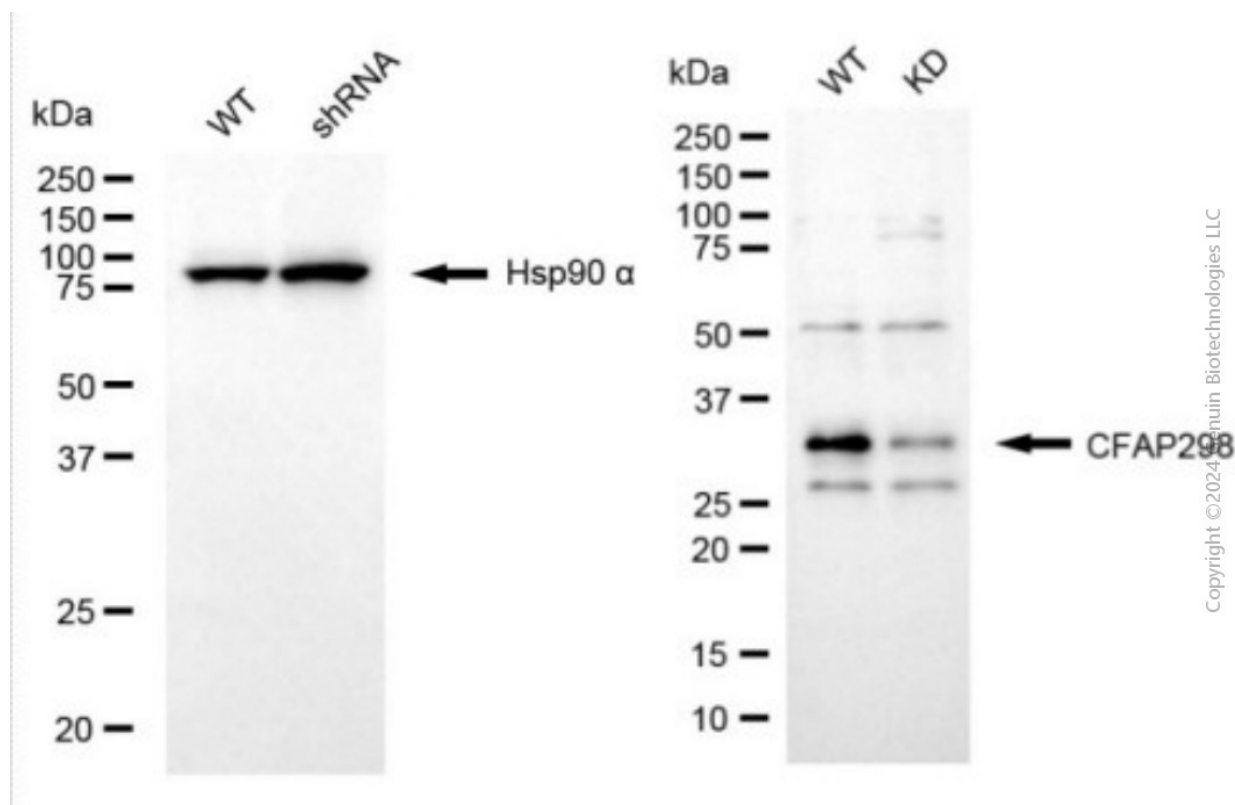
WWW.GENUINBIOTECH.COM



Immunocytochemical staining of HepG2 cells with anti-CFAP298 antibody (Cat#63796, 1:500) . Nuclei were stained blue with DAPI; CFAP298 was stained magenta with Alexa Fluor® 647. Images were taken using Leica stellaris 5. Protein abundance based on laser Intensity and smart gain: Medium. Scale bar, 20 μ m.



Western blotting analysis using anti-CFAP298 antibody (Cat#63796). Total cell lysates (30 μ g) from various cell lines were loaded and separated by SDS-PAGE. The blot was incubated with anti-CFAP298 antibody (Cat#63796, 1:2,500) and HRP-conjugated goat anti-mouse secondary antibody (Cat#201, 1:20,000) respectively. Image was developed using FeQ™ ECL Substrate Kit (Cat#226).



Western blotting analysis using anti-CFAP298 antibody (Cat#63796). CFAP298 expression in wild type (WT) and CFAP298 shRNA knockdown (KD) HT-1080 cells with 20 µg of total cell lysates. Hsp90 α serves as a loading control. The blot was incubated with anti-CFAP298 antibody (Cat#63796, 1:2,500) and HRP-conjugated goat anti-mouse secondary antibody (Cat#101, 1:20,000) respectively. Image was developed using NaQ™ ECL Substrate Kit (Cat#716).