

# KD-Validated Anti-BCAT1 Mouse Monoclonal Antibody



**Catalog #: 63802**

## Aliases

BCAT1; Branched Chain Amino Acid Transaminase 1; BCATc; BCT1; Branched-Chain-Amino-Acid Aminotransferase, Cytosolic; Branched Chain Aminotransferase 1, Cytosolic; EC 2.6.1.42; ECA39; Branched Chain Amino-Acid Transaminase 1, Cytosolic; Placental Protein 18; Protein ECA39; PNAS121; BCAT(C); MECA39; PP18

## Background

Gene Name: BCAT1

NCBI Gene Entry: [586](#)

UniProt Entry: [P54687](#)

## Application Information

Molecular Weight: Predicted, 43 kDa; observed, 43 kDa

Clonality: Mouse monoclonal antibody

Clone ID: 24GB7945

Species Reactivity: Human, mouse

Applications Tested: Western blotting (WB), flow cytometry (FCM), immunocytochemistry (IC)

## Immunogen

Recombinant protein of human BCAT1

## Isotype

Mouse IgG2a

## Storage Buffer

Supplied in PBS (pH 7.4) containing 50% glycerol, and 0.02% sodium azide.

## Storage

Store at -20 °C for one year.

## Recommended Dilutions

Western Blotting (WB): 1:1,000-1:5,000

Flow Cytometry (FCM): 1:1,000

Immunocytochemistry (IC): 1:100-1:1,000

---

### SUPPORT

SUPPORT@GENUINBIOTECH.COM  
TEL: +1-540-855-7041

### ORDERS

SALES@GENUINBIOTECH.COM  
FAX: +1-540-855-7041

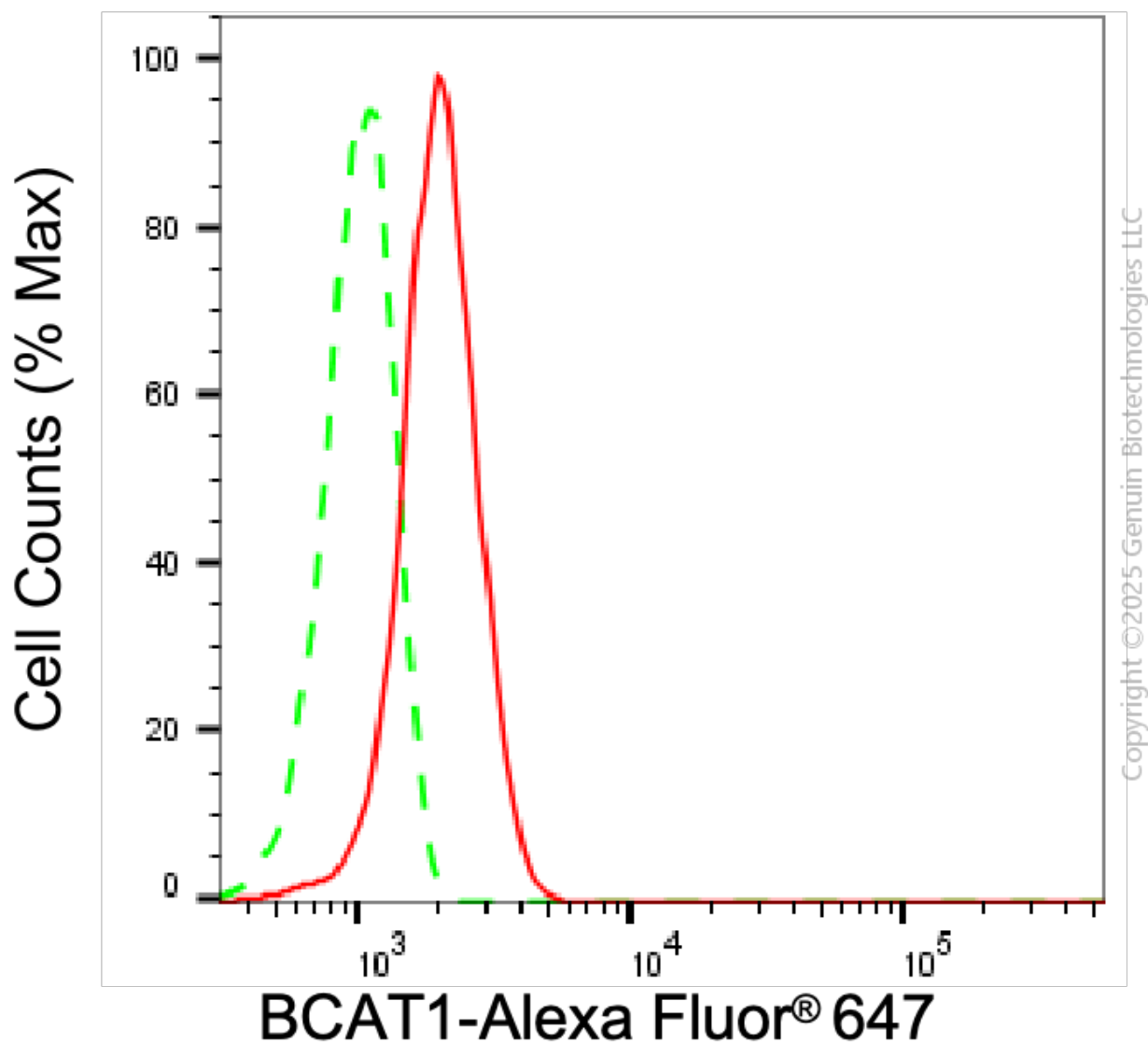
[WWW.GENUINBIOTECH.COM](http://WWW.GENUINBIOTECH.COM)

## KD-Validated Anti-BCAT1 Mouse Monoclonal Antibody

PAGE 2

**Note:** This product is for research use only.

### Validation Data



Flow cytometric analysis of BCAT1 expression in C2C12 cells using anti-BCAT1 antibody (Cat#63802, 1:1,000). Green, isotype control; red, BCAT1.

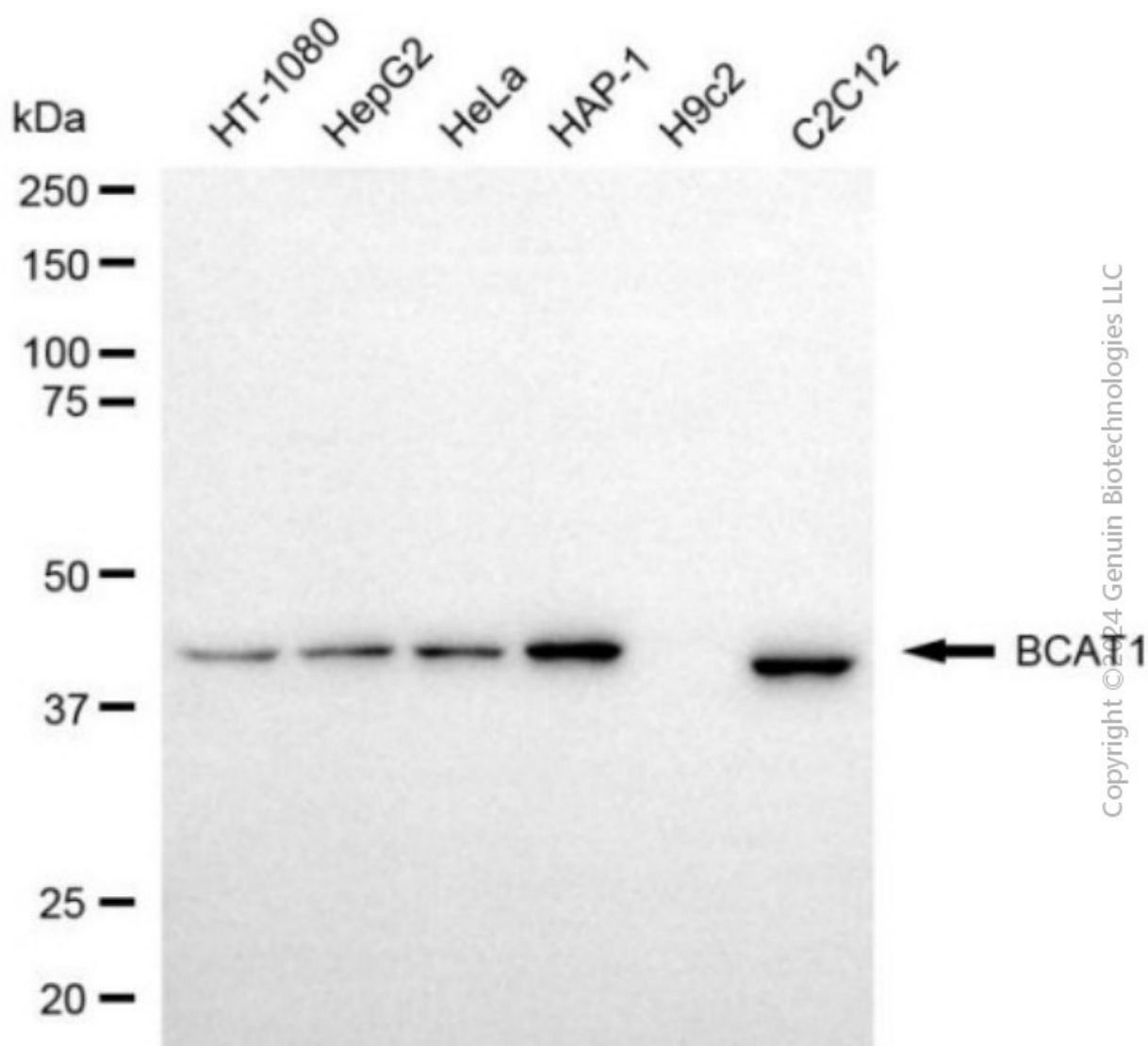
#### SUPPORT

SUPPORT@GENUINBIOTECH.COM  
TEL: +1-540-855-7041

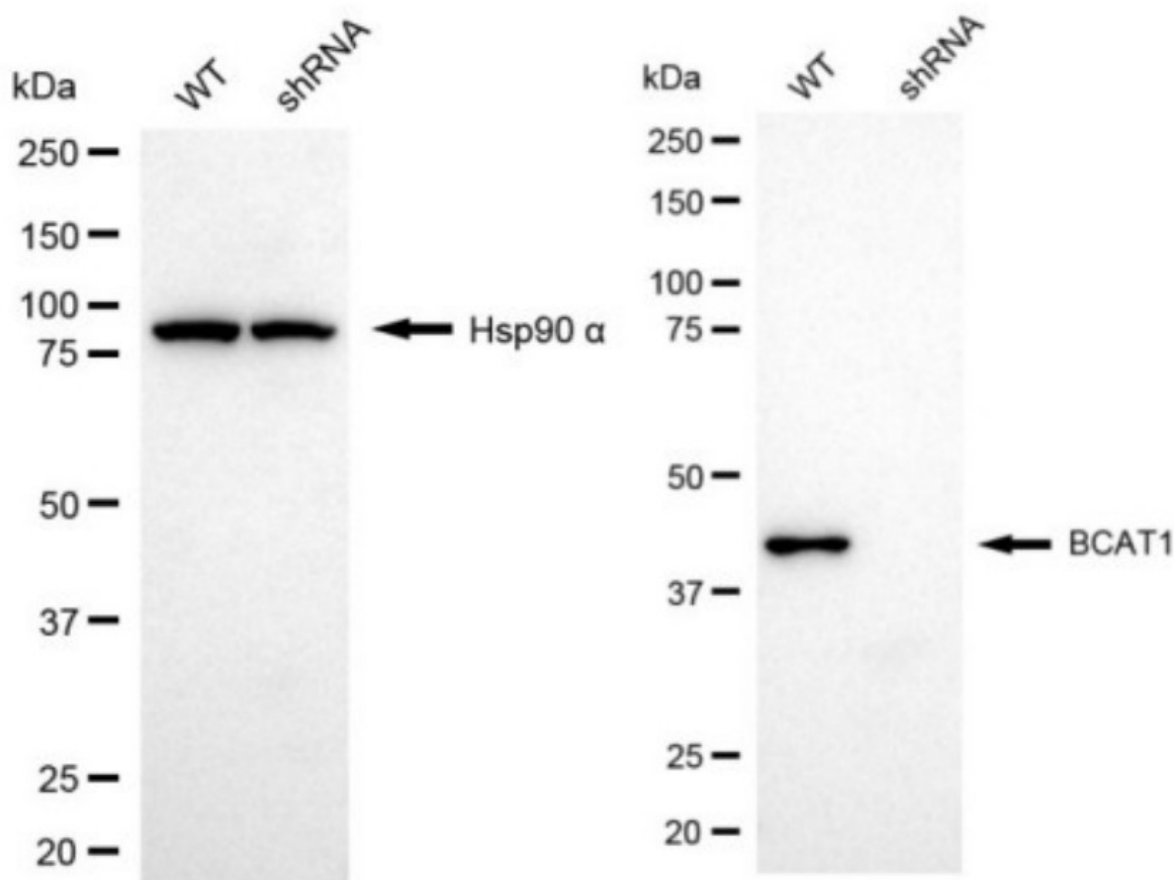
#### ORDERS

SALES@GENUINBIOTECH.COM  
FAX: +1-540-855-7041

[WWW.GENUINBIOTECH.COM](http://WWW.GENUINBIOTECH.COM)

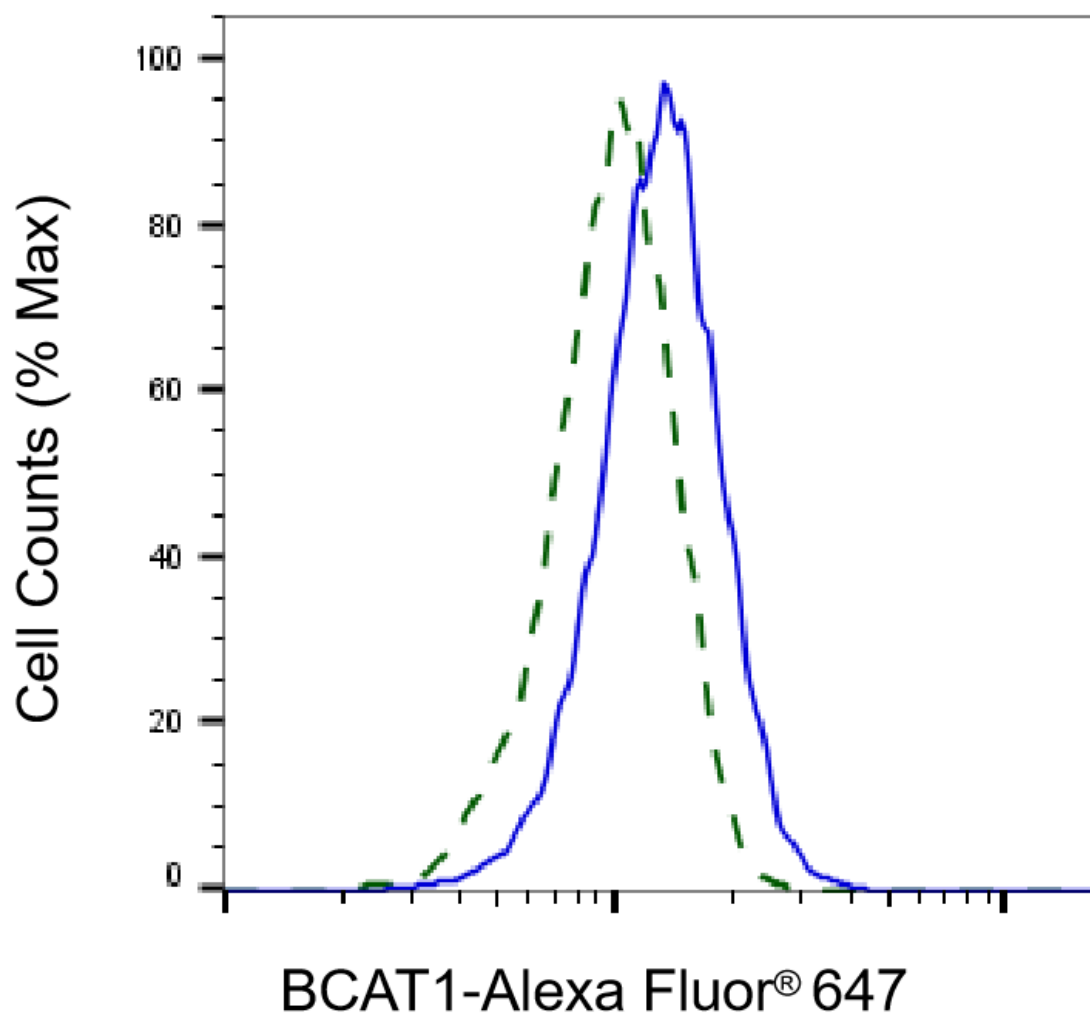


Western blotting analysis using anti-BCAT1 antibody (Cat#63802). Total cell lysates (30 µg) from various cell lines were loaded and separated by SDS-PAGE. The blot was incubated with anti-BCAT1 antibody (Cat#63802, 1:5,000) and HRP-conjugated goat anti-mouse secondary antibody (Cat#101, 1:20,000) respectively. Image was developed using FeQ™ ECL Substrate Kit (Cat#226).

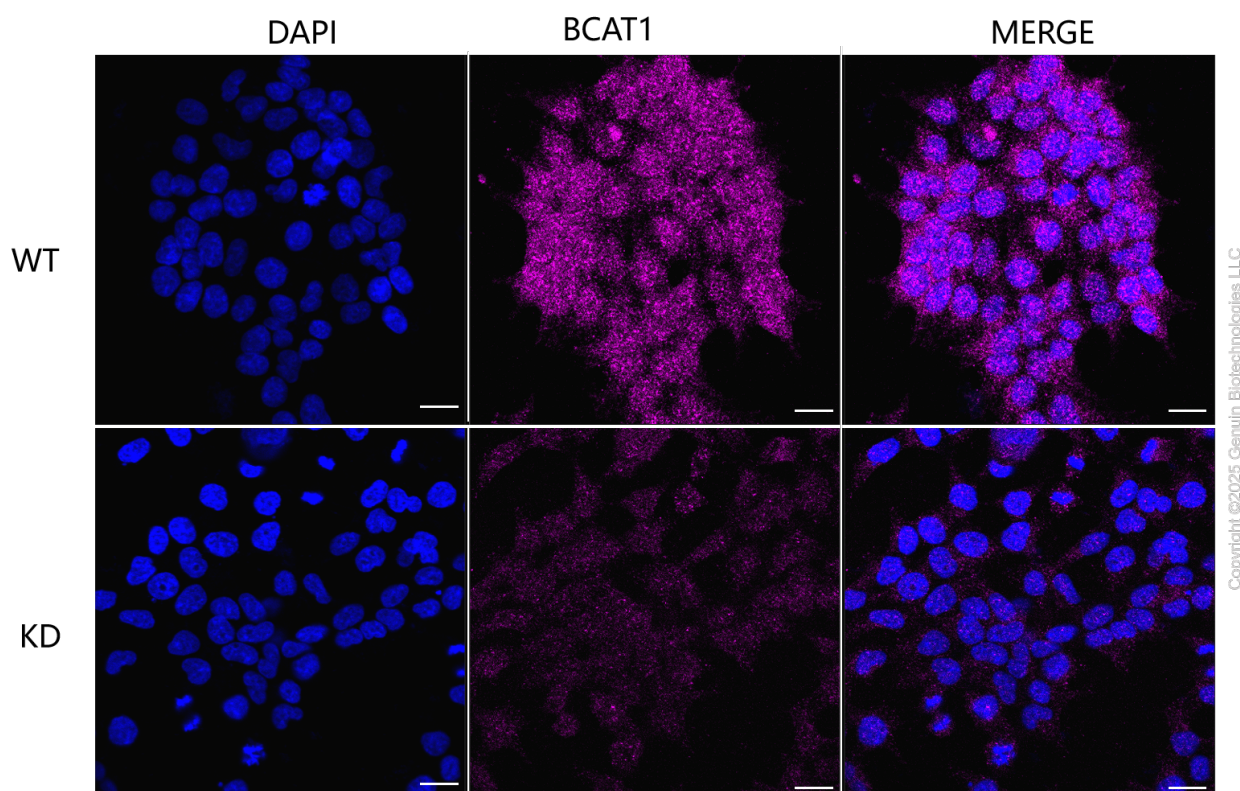


Copyright ©2024 Genuin Biotechnologies LLC

Western blotting analysis using anti-BCAT1 antibody (Cat#63802). BCAT1 expression in wild type (WT) and BCAT1 shRNA knockdown (KD) HeLa cells with 20 µg of total cell lysates. Hsp90 α serves as a loading control. The blot was incubated with anti-BCAT1 antibody (Cat#63802, 1:5,000) and HRP-conjugated goat anti-mouse secondary antibody (Cat#101, 1:20,000) respectively. Image was developed using NaQ™ ECL Substrate Kit (Cat#716).



Validation of BCAT1 knockdown using flow cytometry. Wild-type(WT, Blue) and knockdown(KD, Green) HeLa cells were stained with anti-BCAT1 antibody (Cat#63802, 1:2,000) and analyzed using BD flow cytometer.



Immunocytochemical staining of HeLa cells using anti-BCAT1 antibody (Cat#63802, 1:1,000), Top panel: wild-type (WT); Bottom panel: BCAT1 shRNA knockdown (KD). Nuclei were stained blue with DAPI; BCAT1 was stained magenta with Alexa Fluor® 647. Scale bar, 20  $\mu$ m.