

Catalog #: 63806

Aliases

CMPK1; Cytidine/Uridine Monophosphate Kinase 1; UMP-CMP Kinase; UMP/CMP Kinase; UMP-CMPK; CMPK; Cytidine Monophosphate (UMP-CMP) Kinase 1, Cytosolic; Uridine Monophosphate/Cytidine Monophosphate Kinase; Nucleoside-Diphosphate Kinase; Deoxycytidylate Kinase; Cytidylate Kinase; DCMP Kinase; EC 2.7.4.14; UMPK; CMK; UMK; CK; Cytidine Monophosphate Kinase; Uridine Monophosphate Kinase; EC 2.7.4.6; UMP/CMPK; EC 2.7.4; UCK

Background

Gene Name: CMPK1

NCBI Gene Entry: [51727](#)

UniProt Entry: [P30085](#)

Application Information

Molecular Weight: Predicted, 22 kDa; observed, 20 kDa

Clonality: Mouse monoclonal antibody

Clone ID: 24GB7965

Species Reactivity: Human

Applications Tested: Western blotting (WB), flow cytometry (FCM), immunocytochemistry (IC)

Immunogen

Recombinant protein of human CMPK1

Isotype

Mouse IgG1

Storage Buffer

Supplied in PBS (pH 7.4) containing 50% glycerol, and 0.02% sodium azide.

Storage

Store at -20 °C for one year.

Recommended Dilutions

Western Blotting (WB): 1:500-1:2,500

Flow Cytometry (FCM): 1:1,000

Immunocytochemistry (IC): 1:100-1:1,000

SUPPORT

SUPPORT@GENUINBIOTECH.COM
TEL: +1-540-855-7041

ORDERS

SALES@GENUINBIOTECH.COM
FAX: +1-540-855-7041

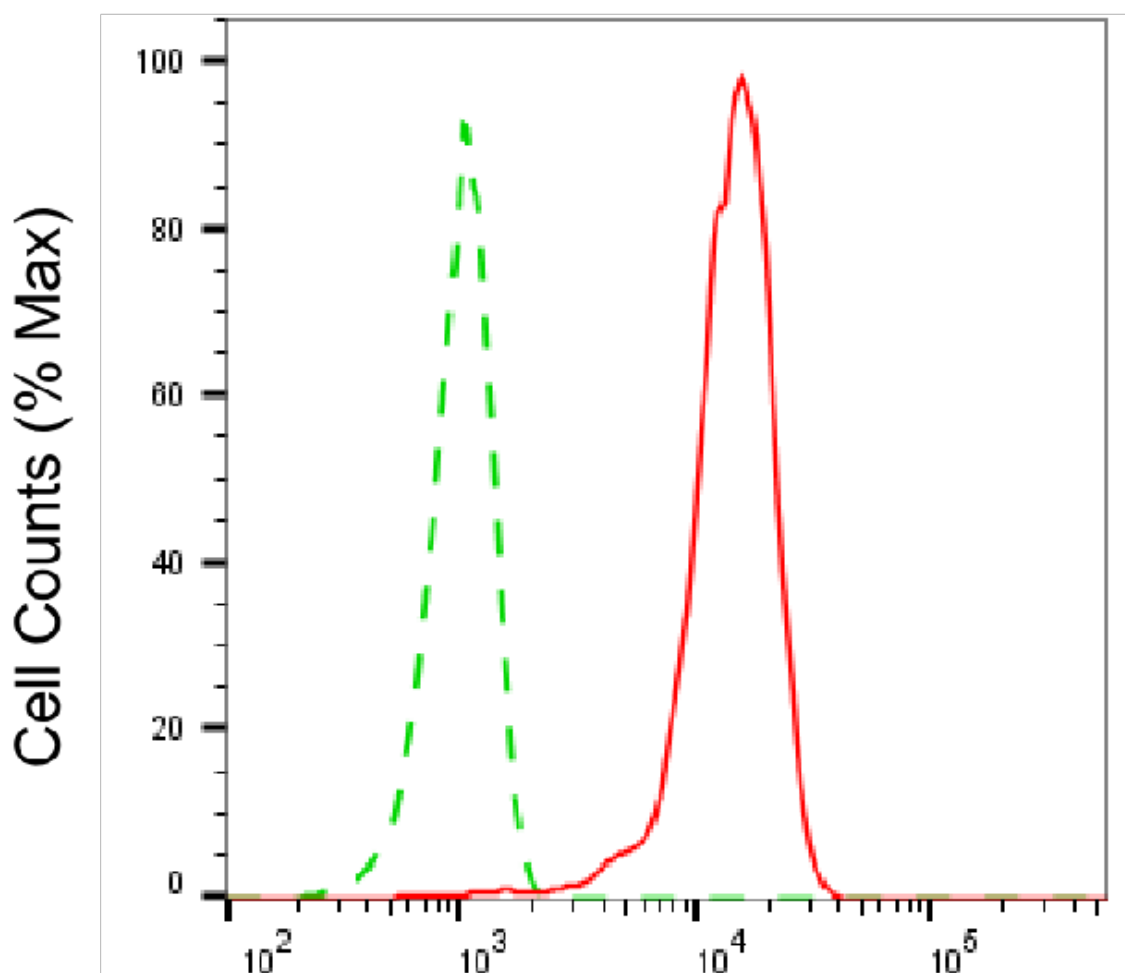
WWW.GENUINBIOTECH.COM

KD-Validated Anti-CMPK1 Mouse Monoclonal Antibody

PAGE 2

Note: This product is for research use only.

Validation Data



Copyright ©2025 Genuin Biotechnologies LLC

CMPK1-Alexa Fluor® 647

Flow cytometric analysis of CMPK1 expression in HepG2 cells using anti-CMPK1 antibody (Cat#63806, 1:1,000). Green, isotype control; red, CMPK1.

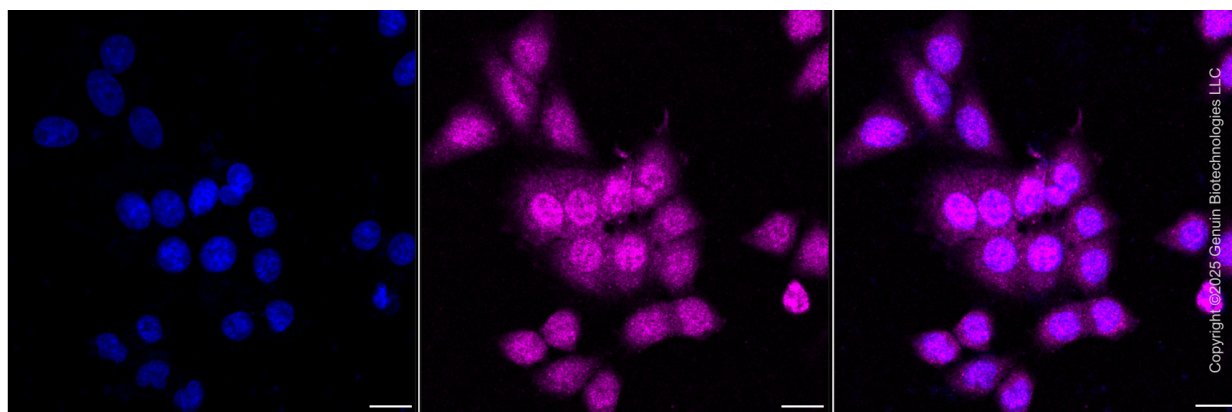
SUPPORT

SUPPORT@GENUINBIOTECH.COM
TEL: +1-540-855-7041

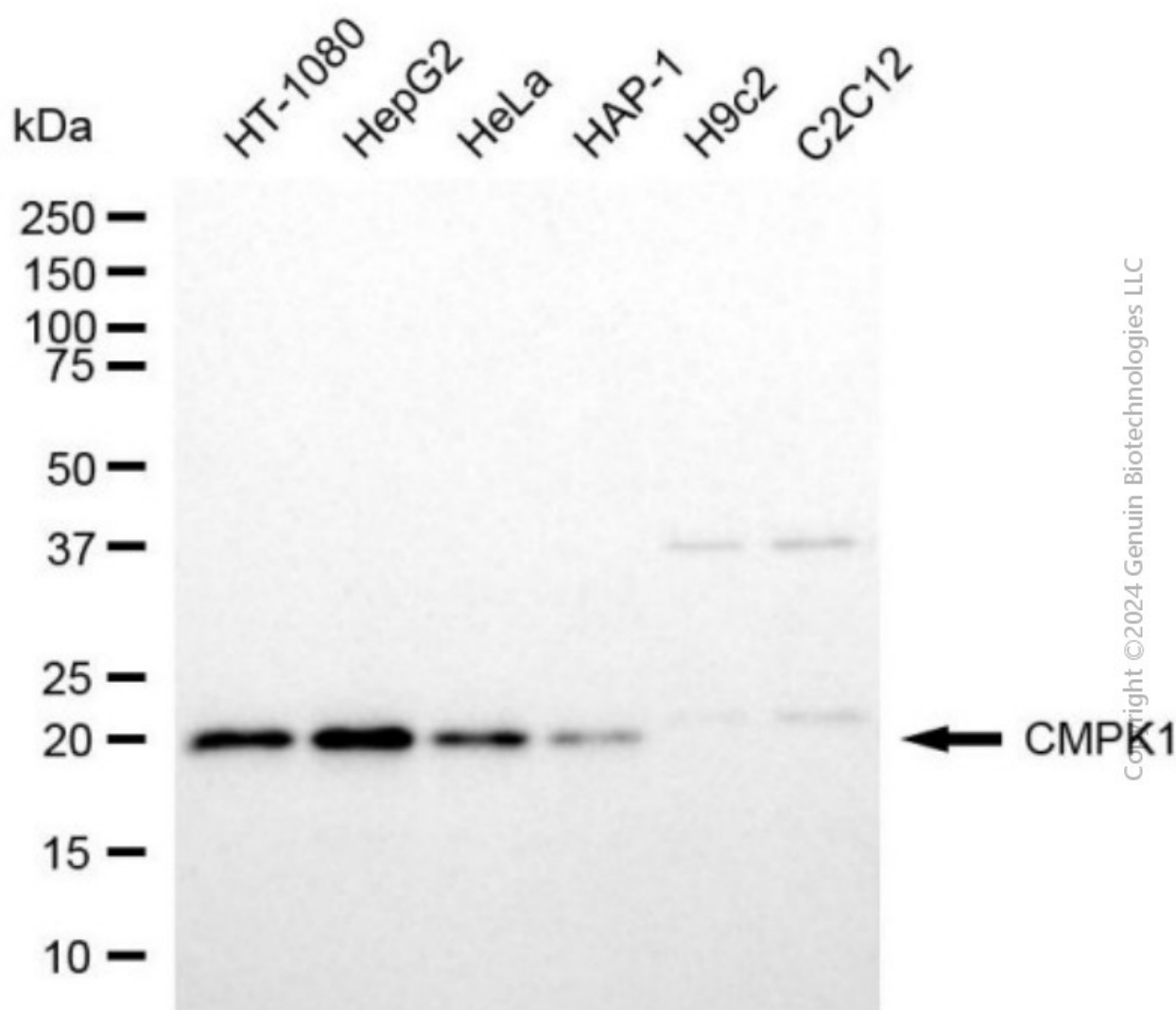
ORDERS

SALES@GENUINBIOTECH.COM
FAX: +1-540-855-7041

WWW.GENUINBIOTECH.COM



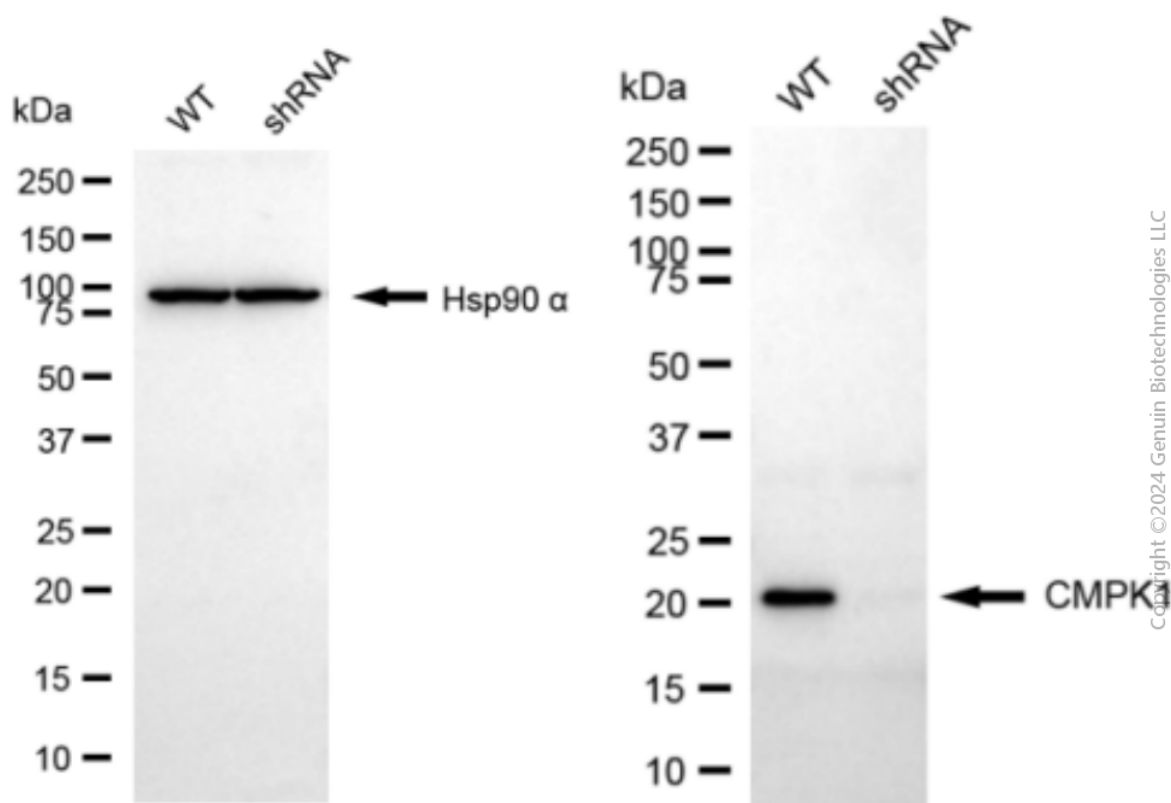
Immunocytochemical staining of HepG2 cells with anti-CMPK1 antibody (Cat#63806, 1:500) . Nuclei were stained blue with DAPI; CMPK1 was stained magenta with Alexa Fluor® 647. Images were taken using Leica stellaris 5. Protein abundance based on laser Intensity and smart gain: Medium. Scale bar, 20 μ m.



KD-Validated Anti-CMPK1 Mouse Monoclonal Antibody

PAGE 4

Western blotting analysis using anti-CMPK1 antibody (Cat#63806). Total cell lysates (30 μ g) from various cell lines were loaded and separated by SDS-PAGE. The blot was incubated with anti-CMPK1 antibody (Cat#63806, 1:2,500) and HRP-conjugated goat anti-mouse secondary antibody (Cat#101, 1:20,000) respectively. Image was developed using FeQ™ ECL Substrate Kit (Cat#226).



Western blotting analysis using anti-CMPK1 antibody (Cat#63806). CMPK1 expression in wild type (WT) and CMPK1 shRNA knockdown (KD) HeLa cells with 20 μ g of total cell lysates. Hsp90 α serves as a loading control. The blot was incubated with anti-CMPK1 antibody (Cat#63806, 1:2,500) and HRP-conjugated goat anti-mouse secondary antibody (Cat#101, 1:20,000) respectively. Image was developed using FeQ™ ECL Substrate Kit (Cat#226).

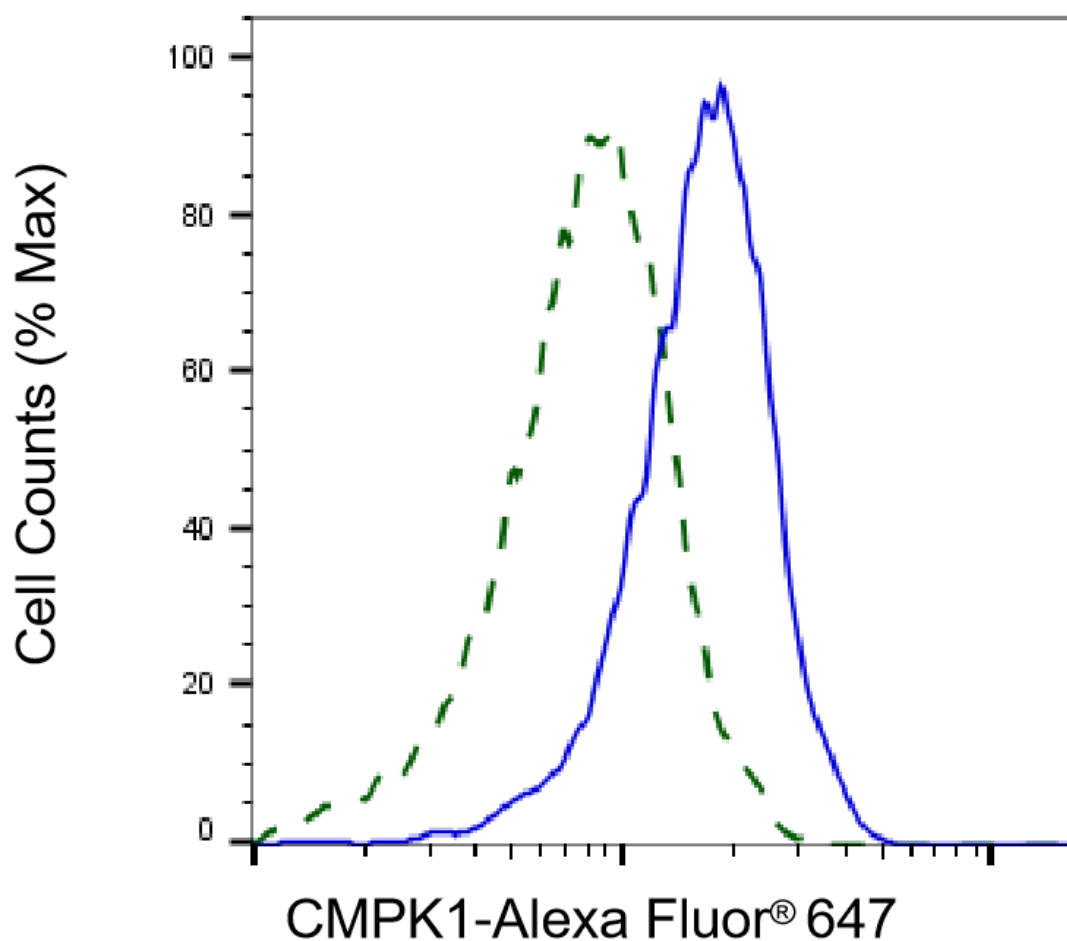
SUPPORT

SUPPORT@GENUINBIOTECH.COM
TEL: +1-540-855-7041

ORDERS

SALES@GENUINBIOTECH.COM
FAX: +1-540-855-7041

WWW.GENUINBIOTECH.COM



Copyright ©2025 Genuin Biotechnologies LLC

Validation of CMPK1 knockdown using flow cytometry. Wild-type(WT, Blue) and knockdown(KD, Green) HeLa cells were stained with anti-CMPK1 antibody (Cat#63806, 1:2,000) and analyzed using BD flow cytometer.