

KD-Validated Anti-CHMP5 Mouse Monoclonal Antibody



Catalog #: 63819

Aliases

CHMP5; Charged Multivesicular Body Protein 5; Vps60; HSPC177; C9orf83; SNF7DC2; CGI-34; Vacuolar Protein Sorting-Associated Protein 60; SNF7 Domain-Containing Protein; Chromatin-Modifying Protein 5; HVps60; Chromosome 9 Open Reading Frame 83; Apoptosis-Related Protein PNAS-2; Chromatin Modifying Protein 5; SNF7 Domain Containing; PNAS-2

Background

Gene Name: CHMP5

NCBI Gene Entry: [51510](#)

UniProt Entry: [Q9NZZ3](#)

Application Information

Molecular Weight: Predicted, 25 kDa; observed, 30 kDa

Clonality: Mouse monoclonal antibody

Clone ID: 24GB8030

Species Reactivity: Human, mouse, rat

Applications Tested: Western blotting (WB), flow cytometry (FCM)

Immunogen

Recombinant protein of human CHMP5

Isotype

Mouse IgG1

Storage Buffer

Supplied in PBS (pH 7.4) containing 50% glycerol, and 0.02% sodium azide.

Storage

Store at -20 °C for one year.

Recommended Dilutions

Western Blotting (WB): 1:200-1:1,000

Flow Cytometry (FCM): 1:1,000

Note: This product is for research use only.

SUPPORT

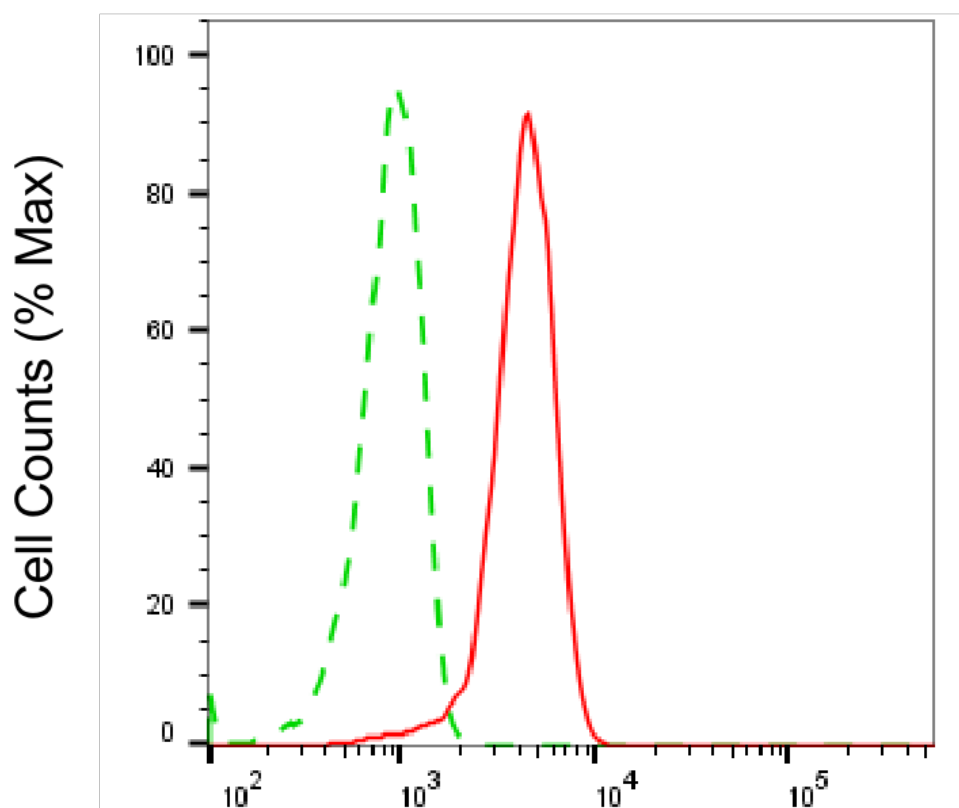
SUPPORT@GENUINBIOTECH.COM
TEL: +1-540-855-7041

ORDERS

SALES@GENUINBIOTECH.COM
FAX: +1-540-855-7041

WWW.GENUINBIOTECH.COM

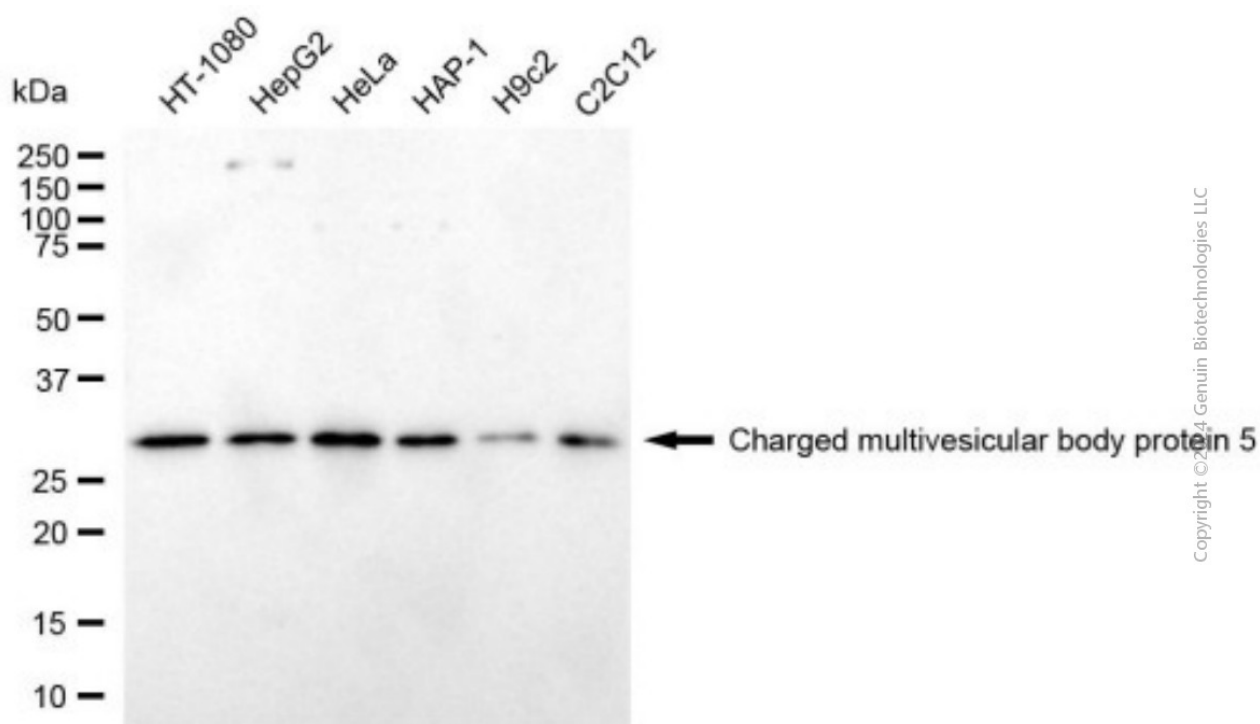
Validation Data



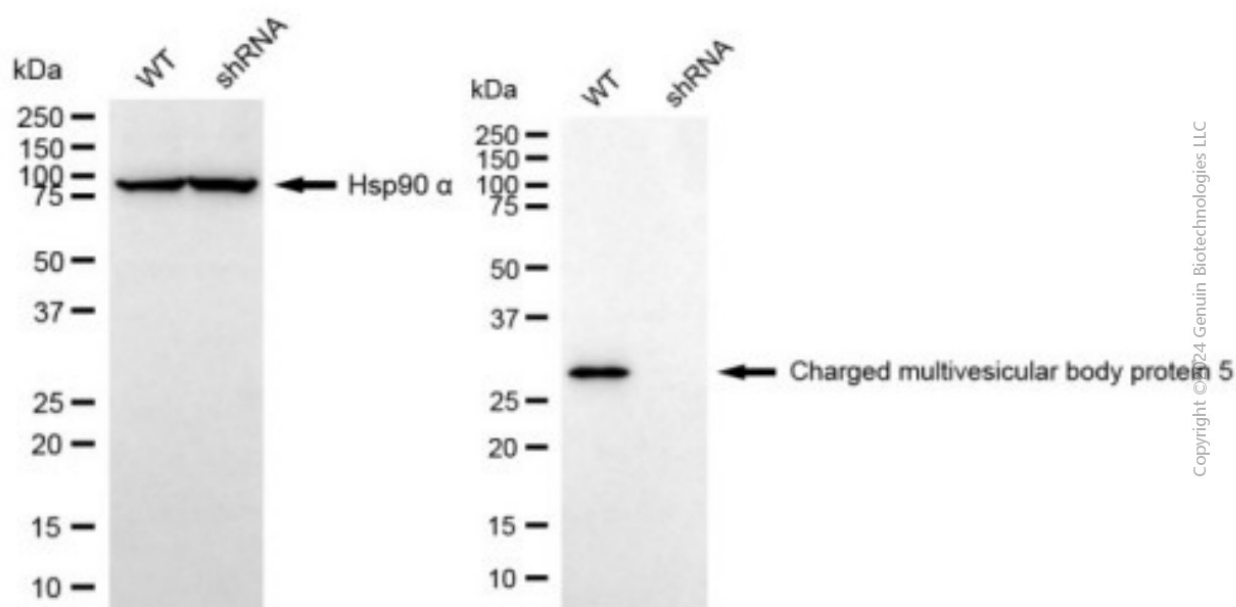
Copyright ©2025 Genuin Biotechnologies LLC

Charged multivesicular body protein 5-Alexa Fluor® 647

Flow cytometric analysis of Charged multivesicular body protein 5 expression in HepG2 cells using anti-Charged multivesicular body protein 5 antibody (Cat#63819, 1:1,000). Green, isotype control; red, Charged multivesicular body protein 5.



Western blotting analysis using anti-charged multivesicular body protein 5 antibody (Cat#63819). Total cell lysates (30 μ g) from various cell lines were loaded and separated by SDS-PAGE. The blot was incubated with anti-charged multivesicular body protein 5 antibody (Cat#63819, 1:1,000) and HRP-conjugated goat anti-mouse secondary antibody (Cat#101, 1:20,000) respectively. Image was developed using NaQ™ ECL Substrate Kit (Cat#716).



KD-Validated Anti-CHMP5 Mouse Monoclonal Antibody

PAGE 4

Western blotting analysis using anti-charged multivesicular body protein 5 antibody (Cat#63819). Charged multivesicular body protein 5 expression in wild-type (WT) and charged multivesicular body protein 5 (CHMP5) shRNA knockdown (KD) HeLa cells with 20 µg of total cell lysates. Hsp90 α serves as a loading control. The blot was incubated with anti-charged multivesicular body protein 5 antibody (Cat#63819, 1:1,000) and HRP-conjugated goat anti-mouse secondary antibody (Cat#101, 1:20,000) respectively. Image was developed using NaQ™ ECL Substrate Kit (Cat#716).

SUPPORT

SUPPORT@GENUINBIOTECH.COM
TEL: +1-540-855-7041

ORDERS

SALES@GENUINBIOTECH.COM
FAX: +1-540-855-7041

WWW.GENUINBIOTECH.COM