

Catalog #: 63822

Aliases

CTDSP2; CTD Small Phosphatase 2; SCP2; OS4; Nuclear LIM Interactor-Interacting Factor 2; NLI-Interacting Factor 2; Small CTD Phosphatase 2; PSR2; CTD (Carboxy-Terminal Domain, RNA Polymerase II, Polypeptide A) Small Phosphatase 2; Carboxy-Terminal Domain RNA Polymerase II Polypeptide A Small Phosphatase 2; Conserved Gene Amplified In Osteosarcoma; Small C-Terminal Domain Phosphatase 2; Protein OS-4; EC 3.1.3.16; NIF

Background

Gene Name: CTDSP2

NCBI Gene Entry: [10106](#)

UniProt Entry: [O14595](#)

Application Information

Molecular Weight: Predicted, 31 kDa; observed, 35 kDa

Clonality: Mouse monoclonal antibody

Clone ID: 24GB8045

Species Reactivity: Human, mouse, rat

Applications Tested: Western blotting (WB), flow cytometry (FCM)

Immunogen

Recombinant protein of human CTDSP2

Isotype

Mouse IgG1

Storage Buffer

Supplied in PBS (pH 7.4) containing 50% glycerol, and 0.02% sodium azide.

Storage

Store at -20 °C for one year.

Recommended Dilutions

Western Blotting (WB): 1:1,000-1:5,000

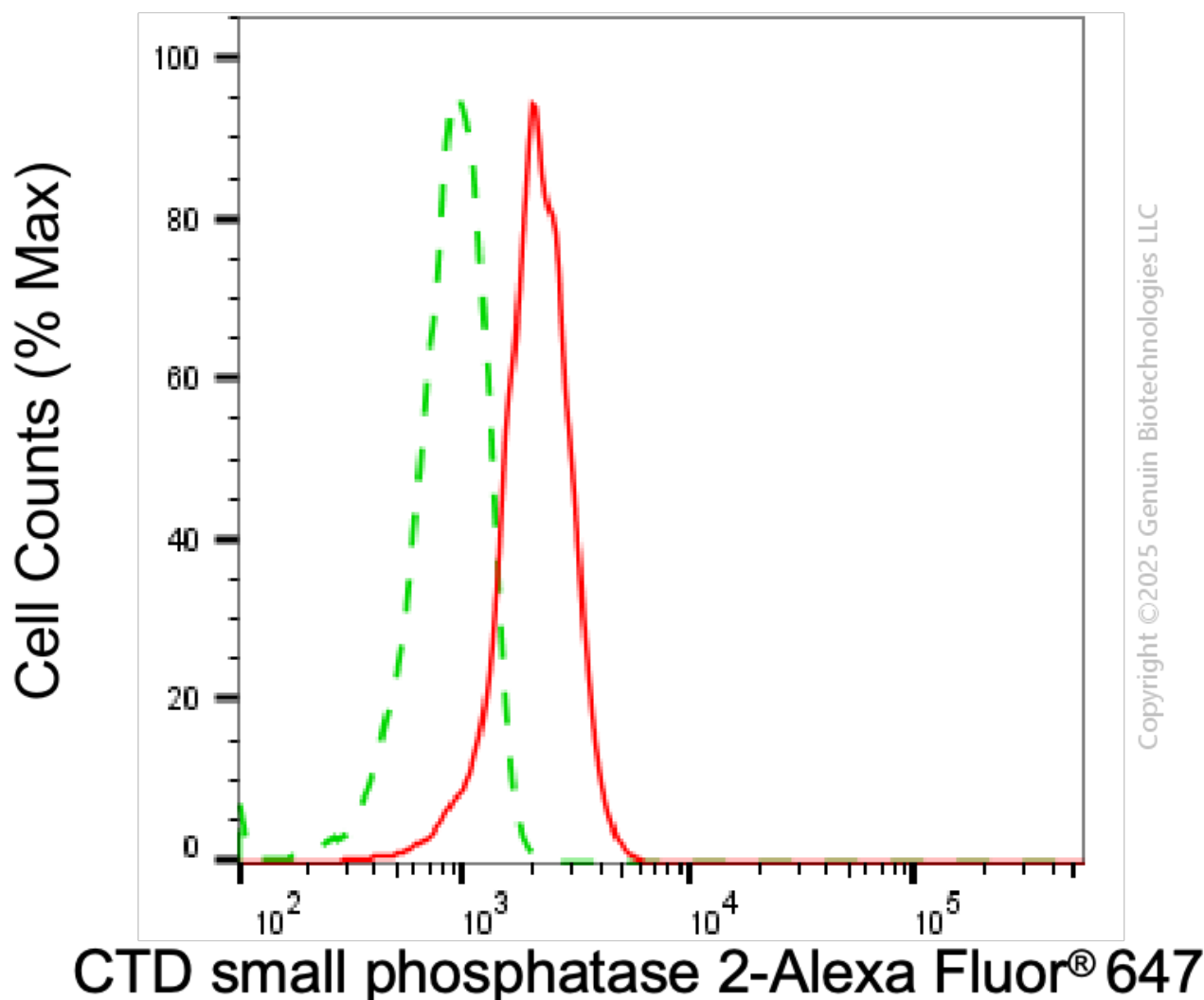
Flow Cytometry (FCM): 1:2,000

KD-Validated Anti-CTDSP2 Mouse Monoclonal Antibody

PAGE 2

Note: This product is for research use only.

Validation Data



Flow cytometric analysis of CTD small phosphatase 2 expression in HepG2 cells using anti-CTD small phosphatase 2 antibody (Cat#63822, 1:2,000). Green, isotype control; red, CTD small phosphatase 2.

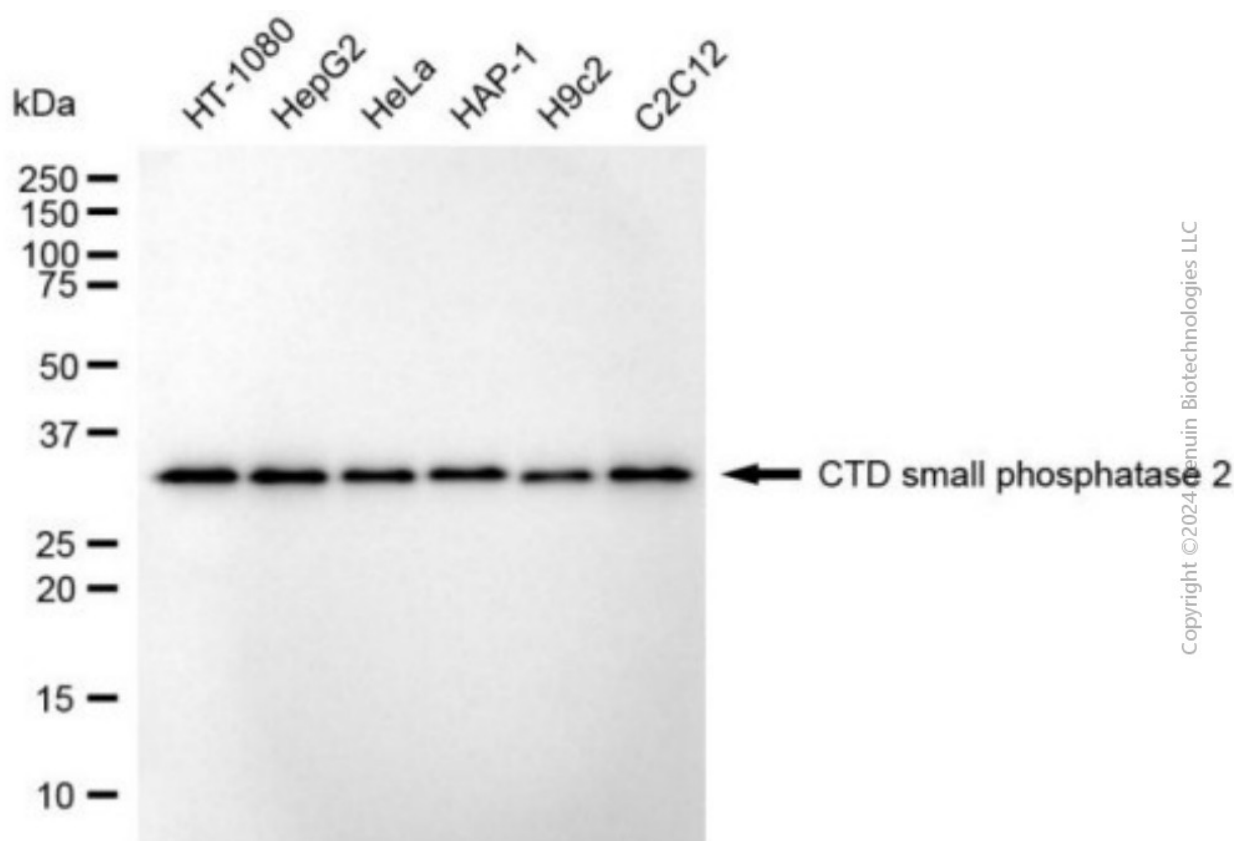
SUPPORT

SUPPORT@GENUINBIOTECH.COM
TEL: +1-540-855-7041

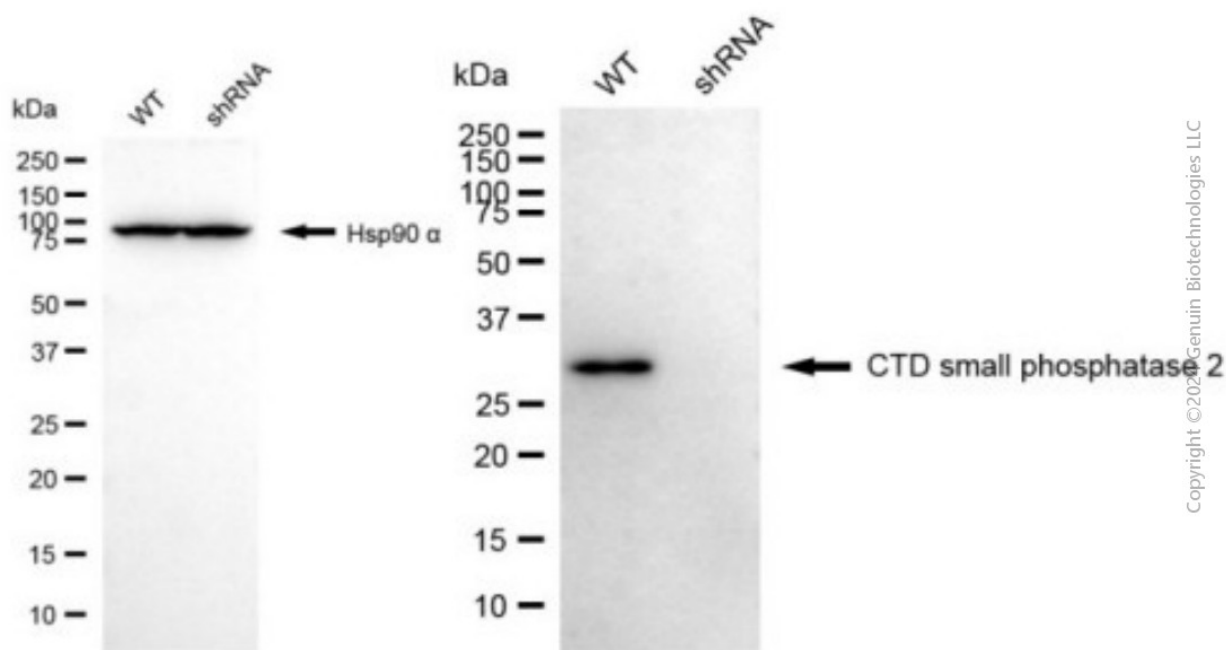
ORDERS

SALES@GENUINBIOTECH.COM
FAX: +1-540-855-7041

WWW.GENUINBIOTECH.COM



Western blotting analysis using anti-CTD small phosphatase 2 antibody (Cat#63822). Total cell lysates (30 µg) from various cell lines were loaded and separated by SDS-PAGE. The blot was incubated with anti-CTD small phosphatase 2 antibody (Cat#63822, 1:5,000) and HRP-conjugated goat anti-mouse secondary antibody (Cat#101, 1:20,000) respectively. Image was developed using FeQ™ ECL Substrate Kit (Cat#226).



Copyright ©2020 Genuin Biotechnologies LLC

Western blotting analysis using anti-CTD small phosphatase 2 antibody (Cat#63822). CTD small phosphatase 2 expression in wild type (WT) and CTD small phosphatase 2 (CTDSP2) shRNA knockdown (KD) HeLa cells with 20 μ g of total cell lysates. Hsp90 α serves as a loading control. The blot was incubated with anti-CTD small phosphatase 2 antibody (Cat#63822, 1:5,000) and HRP-conjugated goat anti-mouse secondary antibody (Cat#101, 1:20,000) respectively. Image was developed using FeQ™ ECL Substrate Kit (Cat#226).