

# KD-Validated Anti-CRLF3 Mouse Monoclonal Antibody



**Catalog #: 63834**

## Aliases

CRLF3; Cytokine Receptor Like Factor 3; CREME9; CYTOR4; Cytokine Receptor-Like Factor 3; Type I Cytokine Receptor-Like Factor P48; Cytokine Receptor-Related Protein 4; Cytokine Receptor-Like Molecule 9; CREME-9; CRLM9; P48.2; FRWS; P48

## Background

Gene Name: CRLF3

NCBI Gene Entry: [51379](#)

UniProt Entry: [Q8IUI8](#)

## Application Information

Molecular Weight: Predicted, 50 kDa; observed, 51 kDa

Clonality: Mouse monoclonal antibody

Clone ID: 24GB8640

Species Reactivity: Human

Applications Tested: Western blotting (WB), flow cytometry (FCM), immunocytochemistry (IC), Immunohistochemistry (IHC)

## Immunogen

Recombinant protein of human CRLF3

## Isotype

Mouse IgG1

## Storage Buffer

Supplied in PBS (pH 7.4) containing 50% glycerol, and 0.02% sodium azide.

## Storage

Store at -20 °C for one year.

## Recommended Dilutions

Western Blotting (WB): 1:200-1:1,000

Flow Cytometry (FCM): 1:2,000

Immunocytochemistry (IC): 1:100-1:1,000

Immunohistochemistry (IHC): 1:100-1:200

---

### SUPPORT

SUPPORT@GENUINBIOTECH.COM  
TEL: +1-540-855-7041

### ORDERS

SALES@GENUINBIOTECH.COM  
FAX: +1-540-855-7041

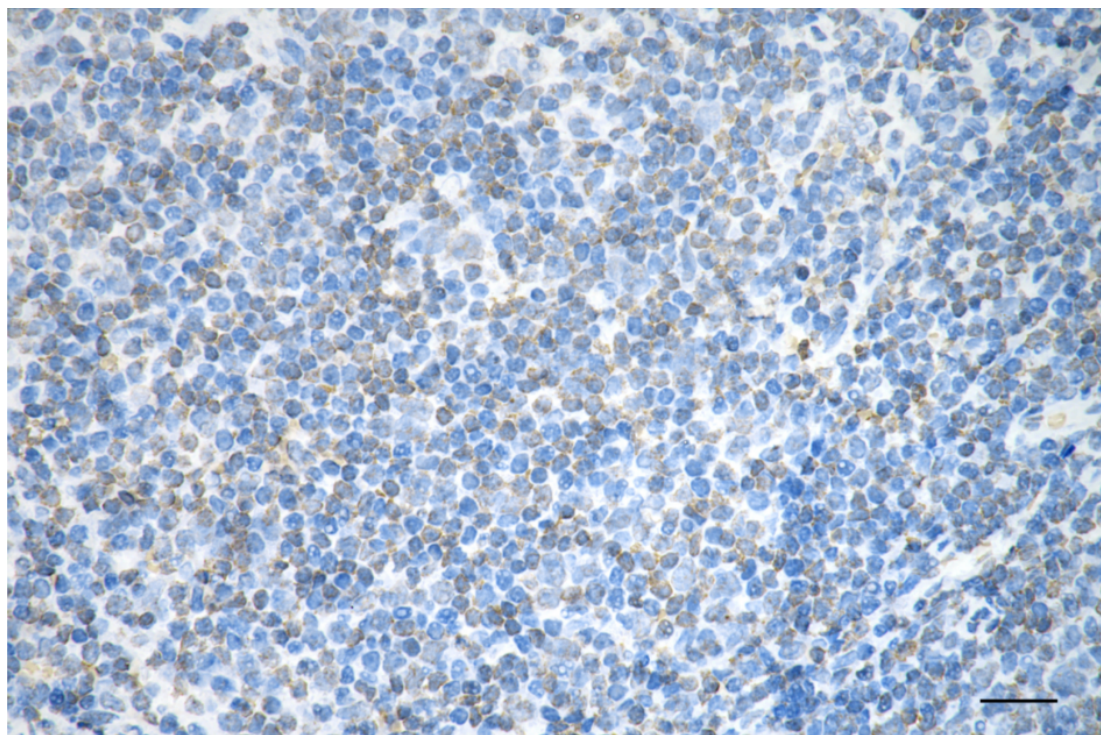
[WWW.GENUINBIOTECH.COM](http://WWW.GENUINBIOTECH.COM)

## KD-Validated Anti-CRLF3 Mouse Monoclonal Antibody

PAGE 2

**Note:** This product is for research use only.

### Validation Data



Copyright ©2025 Genuin Biotechnologies LLC

Immunohistochemistry was performed on paraffin-embedded human lymphoma using anti-cytokine receptor like factor 3 antibody (Cat#63834, 1:200). Antigen retrieval was done in sodium citrate buffer (pH 6.0). DAB was used for detection, with hematoxylin counterstaining. Images were acquired using a Nikon Ci-L Plus microscope (40× objective). Scale bar: 25  $\mu$ m.

---

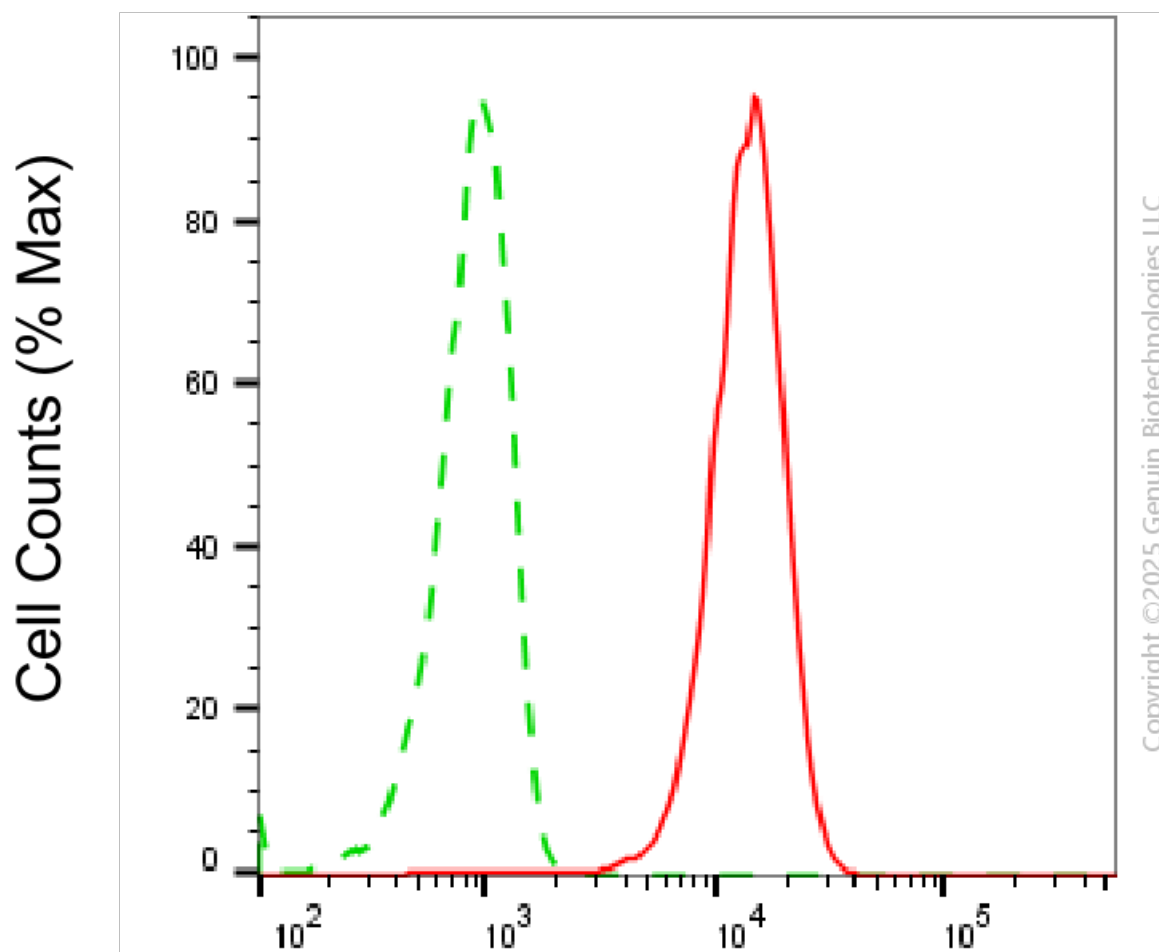
#### SUPPORT

SUPPORT@GENUINBIOTECH.COM  
TEL: +1-540-855-7041

#### ORDERS

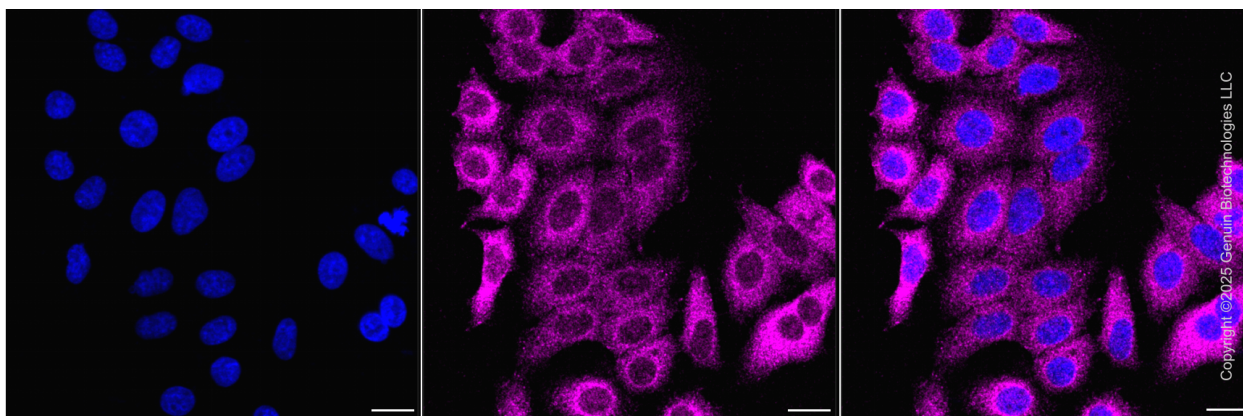
SALES@GENUINBIOTECH.COM  
FAX: +1-540-855-7041

[WWW.GENUINBIOTECH.COM](http://WWW.GENUINBIOTECH.COM)



## Cytokine receptor like factor 3-Alexa Fluor® 647

Flow cytometric analysis of Cytokine receptor like factor 3 expression in HepG2 cells using anti-Cytokine receptor like factor 3 antibody (Cat#63834, 1:2,000). Green, isotype control; red, Cytokine receptor like factor 3.



Immunocytochemical staining of HepG2 cells with anti-Cytokine receptor like factor 3 antibody

### SUPPORT

SUPPORT@GENUINBIOTECH.COM  
TEL: +1-540-855-7041

### ORDERS

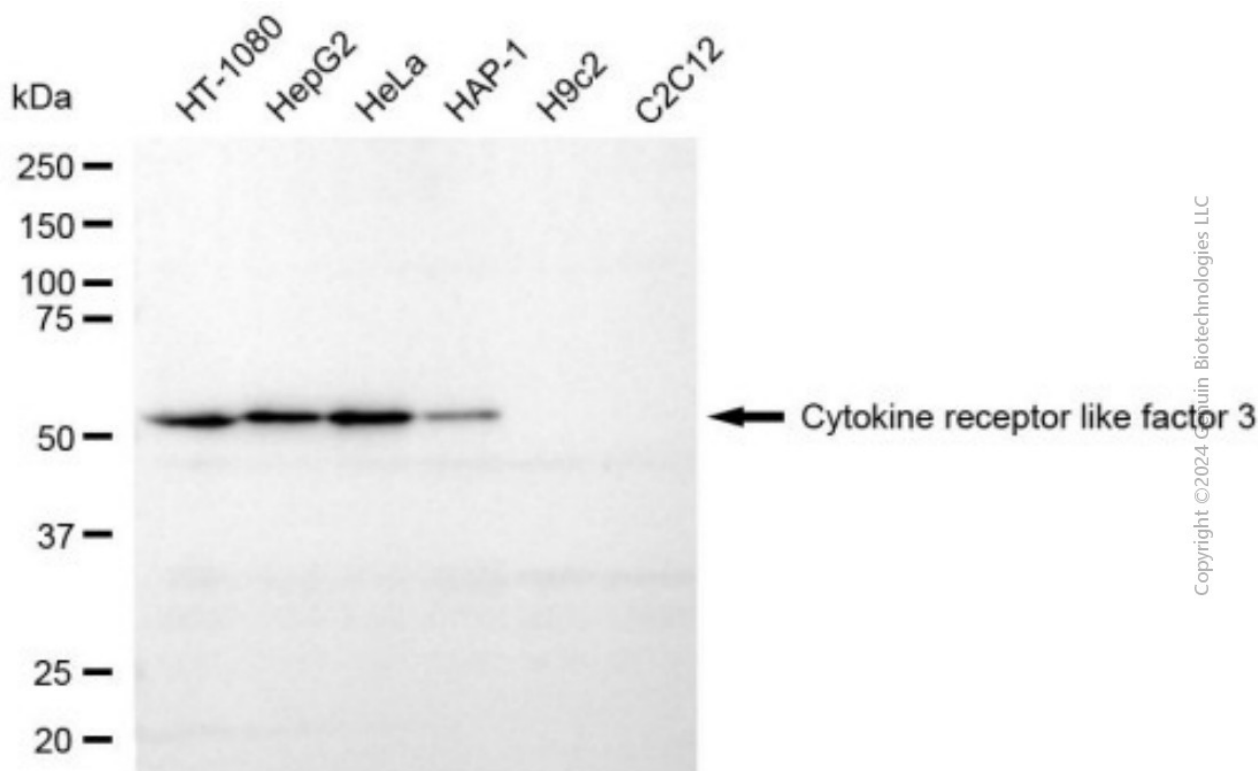
SALES@GENUINBIOTECH.COM  
FAX: +1-540-855-7041

[WWW.GENUINBIOTECH.COM](http://WWW.GENUINBIOTECH.COM)

## KD-Validated Anti-CRLF3 Mouse Monoclonal Antibody

PAGE 4

(Cat#63834, 1:500) . Nuclei were stained blue with DAPI; Cytokine receptor like factor 3 was stained magenta with Alexa Fluor® 647. Images were taken using Leica stellaris 5. Protein abundance based on laser Intensity and smart gain: Medium. Scale bar, 20  $\mu$ m.



Western blotting analysis using anti-cytokine receptor like factor 3 antibody (Cat#63834). Total cell lysates (30  $\mu$ g) from various cell lines were loaded and separated by SDS-PAGE. The blot was incubated with anti-cytokine receptor like factor 3 antibody (Cat#63834, 1:1,000) and HRP-conjugated goat anti-mouse secondary antibody (Cat#101, 1:20,000) respectively. Image was developed using NaQ™ ECL Substrate Kit (Cat#716).

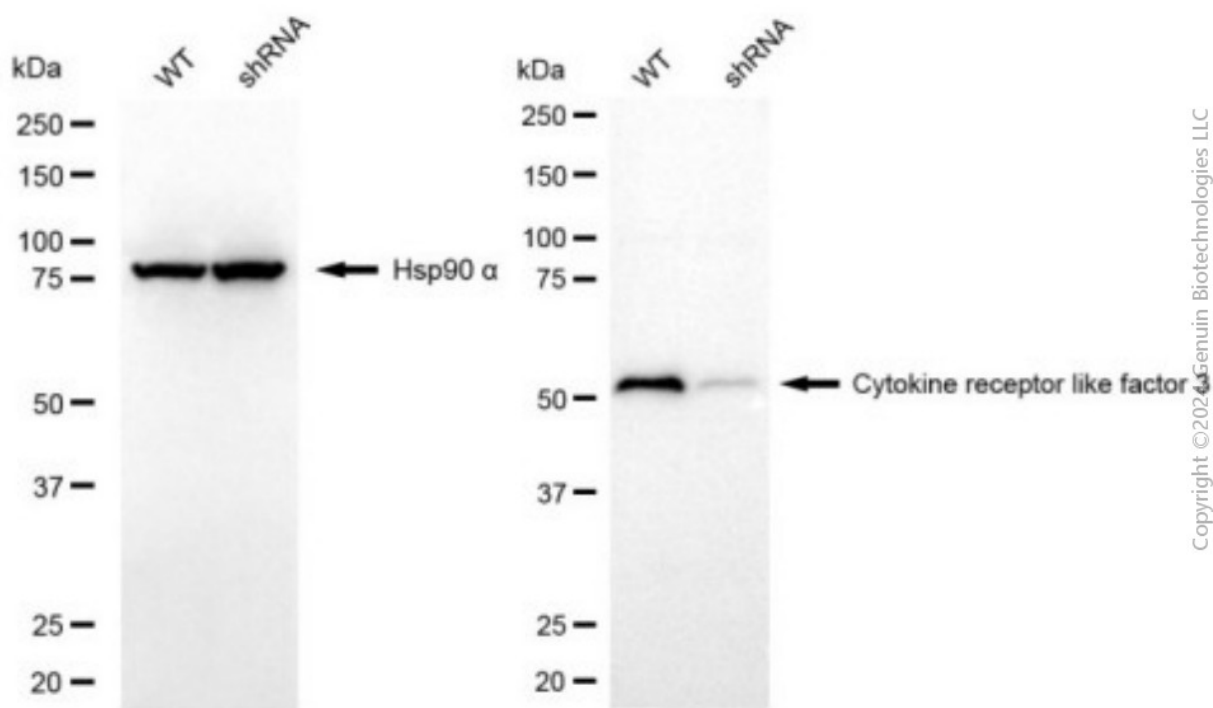
### SUPPORT

SUPPORT@GENUINBIOTECH.COM  
TEL: +1-540-855-7041

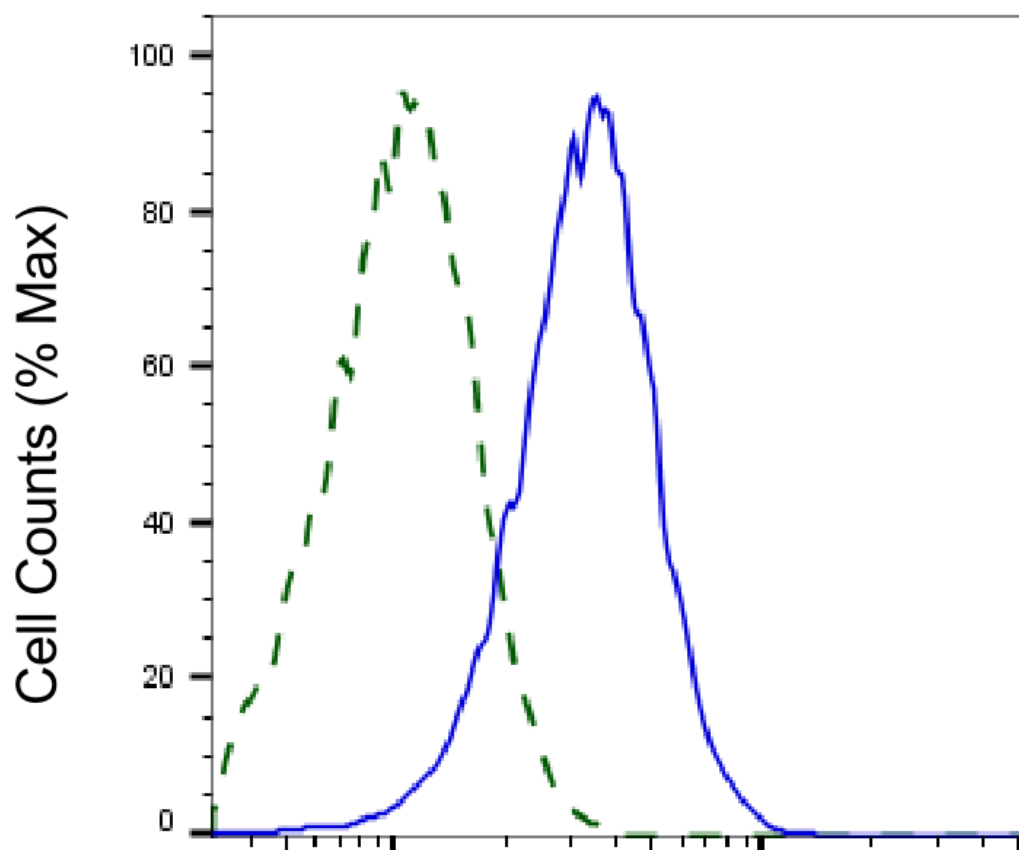
### ORDERS

SALES@GENUINBIOTECH.COM  
FAX: +1-540-855-7041

[WWW.GENUINBIOTECH.COM](http://WWW.GENUINBIOTECH.COM)



Western blotting analysis using anti-cytokine receptor like factor 3 antibody (Cat#63834). Cytokine receptor like factor 3 expression in wild-type (WT) and cytokine receptor like factor 3 (CRLF3) shRNA knockdown (KD) HeLa cells with 20 µg of total cell lysates. Hsp90 α serves as a loading control. The blot was incubated with anti-cytokine receptor like factor 3 antibody (Cat#63834, 1:1,000) and HRP-conjugated goat anti-mouse secondary antibody (Cat#101, 1:20,000) respectively. Image was developed using FeQ™ ECL Substrate Kit (Cat#226).

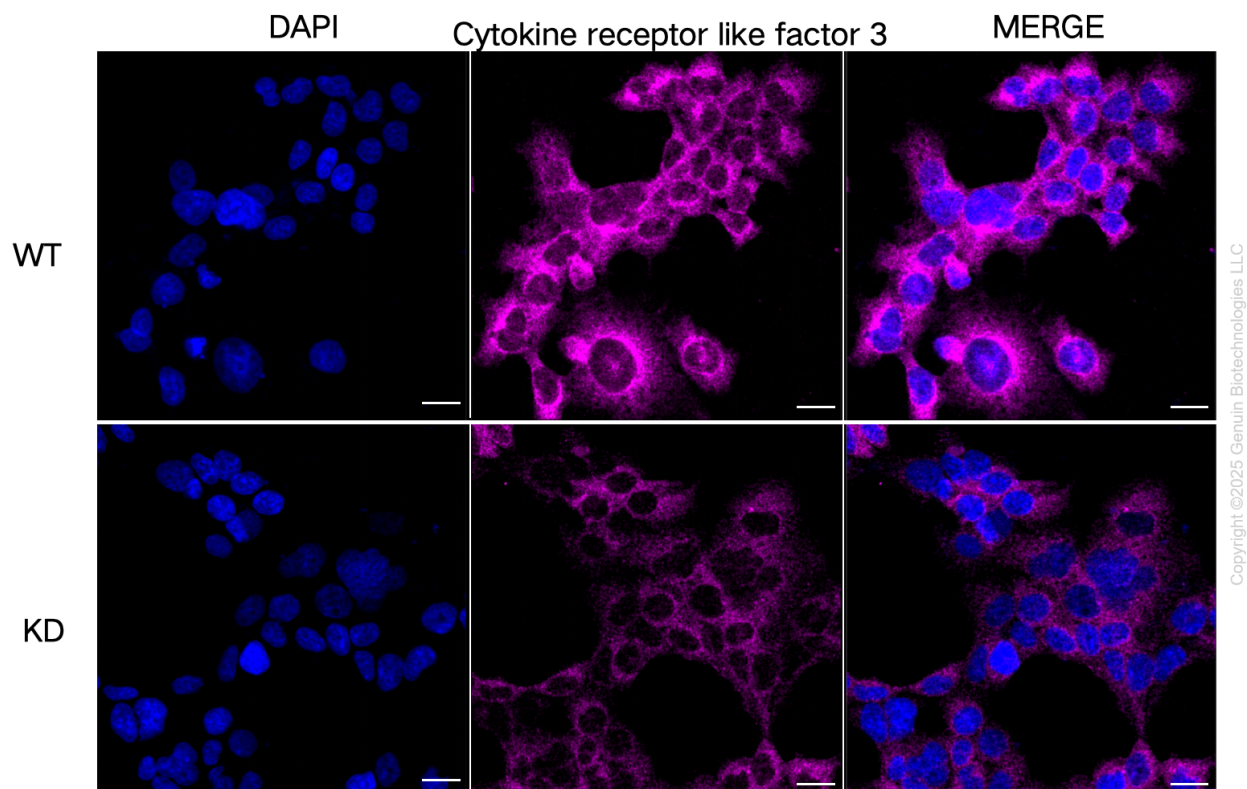


Copyright ©2025 Genuin Biotechnologies LLC

## Cytokine receptor like factor 3-Alexa Fluor® 647

Validation of Cytokine receptor like factor 3 knockdown using flow cytometry. Wild-type(WT, Blue) and knockdown(KD, Green) HeLa cells were stained with anti-Cytokine receptor like factor 3 antibody (Cat#63834, 1:2,000) and analyzed using BD flow cytometer.





Immunocytochemical staining of HeLa cells using anti-Cytokine receptor like factor 3 antibody (Cat#63834, 1:1,000), Top panel: wild-type (WT); Bottom panel: Cytokine receptor like factor 3 shRNA knockdown (KD). Nuclei were stained blue with DAPI; Cytokine receptor like factor 3 was stained magenta with Alexa Fluor® 647. Scale bar, 20  $\mu$ m.