

KD-Validated Anti-DNAJA2 Mouse Monoclonal Antibody



Catalog #: 63838

Aliases

DNAJA2; DnaJ Heat Shock Protein Family (Hsp40) Member A2; HIRIP4; CPR3; DNAJ; DNJ3; Cell Cycle Progression Restoration Gene 3 Protein; DnaJ (Hsp40) Homolog, Subfamily A, Member 2; DnaJ Homolog Subfamily A Member; Renal Carcinoma Antigen NY-REN-14; Cell Cycle Progression 3 Protein; HIRA Interacting Protein 4; HIRA-Interacting Protein 4; PRO3015; DJA2; RDJ2; Dnj3; DJ3; Dj3

Background

Gene Name: DNAJA2

NCBI Gene Entry: [10294](#)

UniProt Entry: [O60884](#)

Application Information

Molecular Weight: Predicted, 46 kDa; observed, 46 kDa

Clonality: Mouse monoclonal antibody

Clone ID: 24GB8120

Species Reactivity: Human, mouse, rat

Applications Tested: Western blotting (WB), flow cytometry (FCM), immunocytochemistry (IC)

Immunogen

Recombinant protein of human DNAJA2

Isotype

Mouse IgG1

Storage Buffer

Supplied in PBS (pH 7.4) containing 50% glycerol, and 0.02% sodium azide.

Storage

Store at -20 °C for one year.

Recommended Dilutions

Western Blotting (WB): 1:200-1:1,000

Flow Cytometry (FCM): 1:1,000

Immunocytochemistry (IC): 1:100-1:1,000

SUPPORT

SUPPORT@GENUINBIOTECH.COM
TEL: +1-540-855-7041

ORDERS

SALES@GENUINBIOTECH.COM
FAX: +1-540-855-7041

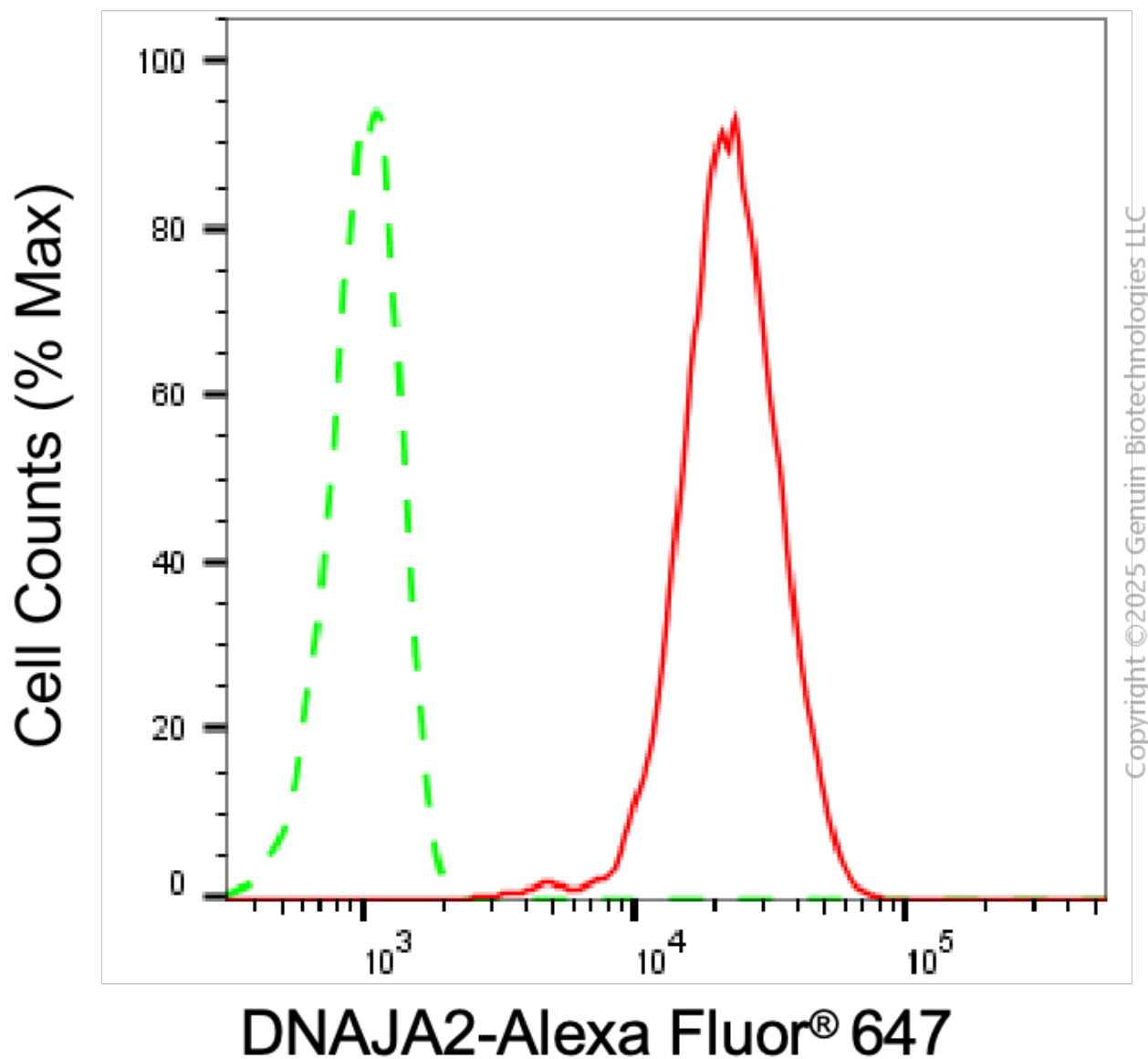
WWW.GENUINBIOTECH.COM

KD-Validated Anti-DNAJA2 Mouse Monoclonal Antibody

PAGE 2

Note: This product is for research use only.

Validation Data



Flow cytometric analysis of DNAJA2 expression in C2C12 cells using anti-DNAJA2 antibody (Cat#63838, 1:1,000). Green, isotype control; red, DNAJA2.

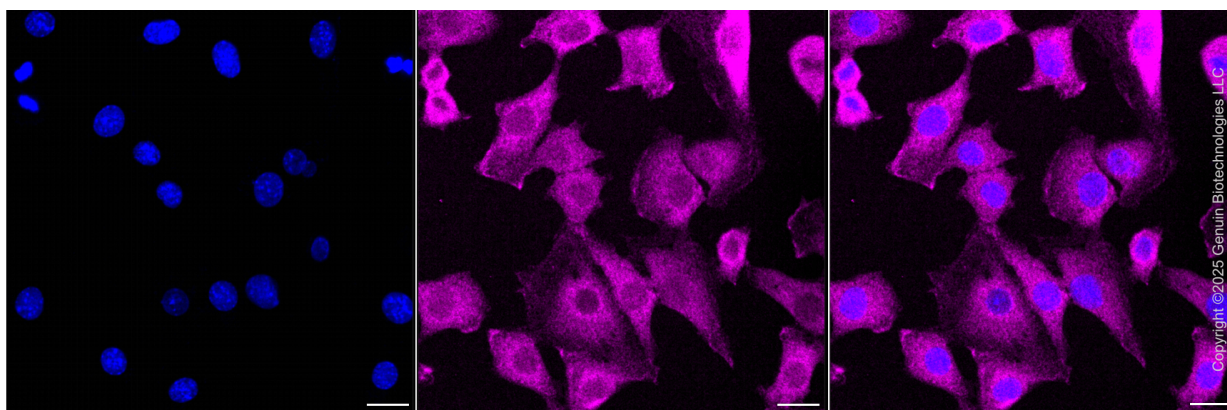
SUPPORT

SUPPORT@GENUINBIOTECH.COM
TEL: +1-540-855-7041

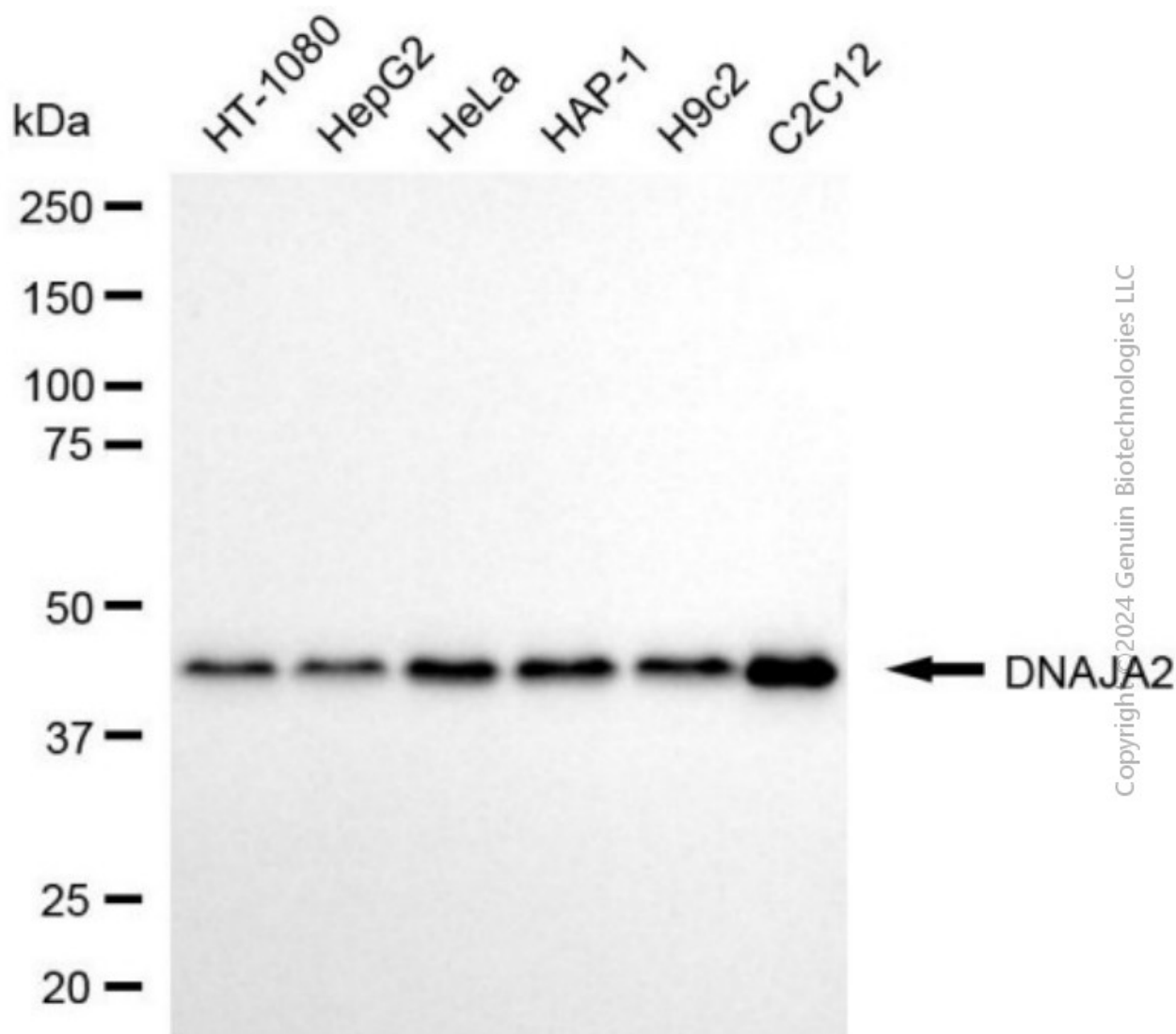
ORDERS

SALES@GENUINBIOTECH.COM
FAX: +1-540-855-7041

WWW.GENUINBIOTECH.COM



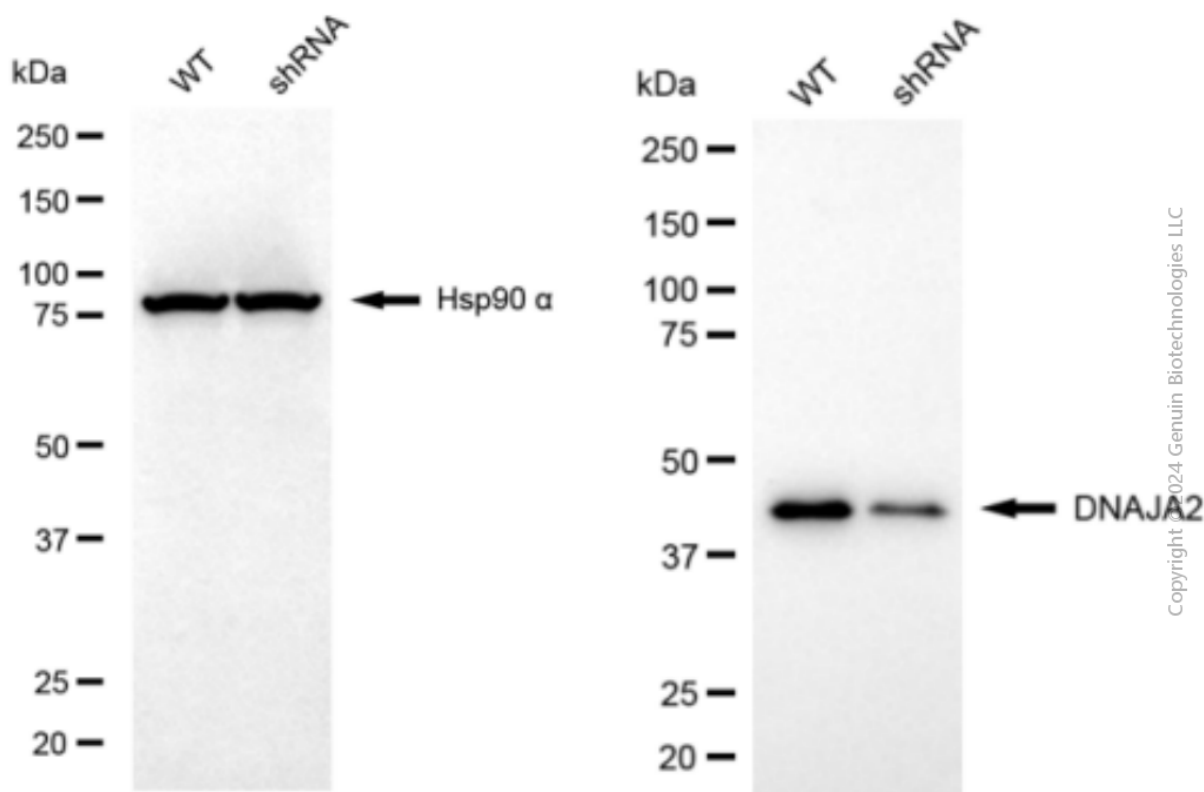
Immunocytochemical staining of C2C12 cells with anti-DNAJA2 antibody (Cat#63838, 1:1,000) . Nuclei were stained blue with DAPI; DNAJA2 was stained magenta with Alexa Fluor® 647. Images were taken using Leica stellaris 5. Protein abundance based on laser Intensity and smart gain: Medium. Scale bar, 20 μ m.



KD-Validated Anti-DNAJA2 Mouse Monoclonal Antibody

PAGE 4

Western blotting analysis using anti-DNAJA2 antibody (Cat#63838). Total cell lysates (10 μ g for C2C12 and 30 μ g for others) from various cell lines were loaded and separated by SDS-PAGE. The blot was incubated with anti-DNAJA2 antibody (Cat#63838, 1:1,000) and HRP-conjugated goat anti-mouse secondary antibody (Cat#101, 1:20,000) respectively. Image was developed using NaQ™ ECL Substrate Kit (Cat#716).



Western blotting analysis using anti-DNAJA2 antibody (Cat#63838). DNAJA2 expression in wild type (WT) and DNAJA2 shRNA knockdown (KD) HeLa cells with 20 μ g of total cell lysates. Hsp90 α serves as a loading control. The blot was incubated with anti-DNAJA2 antibody (Cat#63838, 1:1,000) and HRP-conjugated goat anti-mouse secondary antibody (Cat#101, 1:20,000) respectively. Image was developed using NaQ™ ECL Substrate Kit (Cat#716).

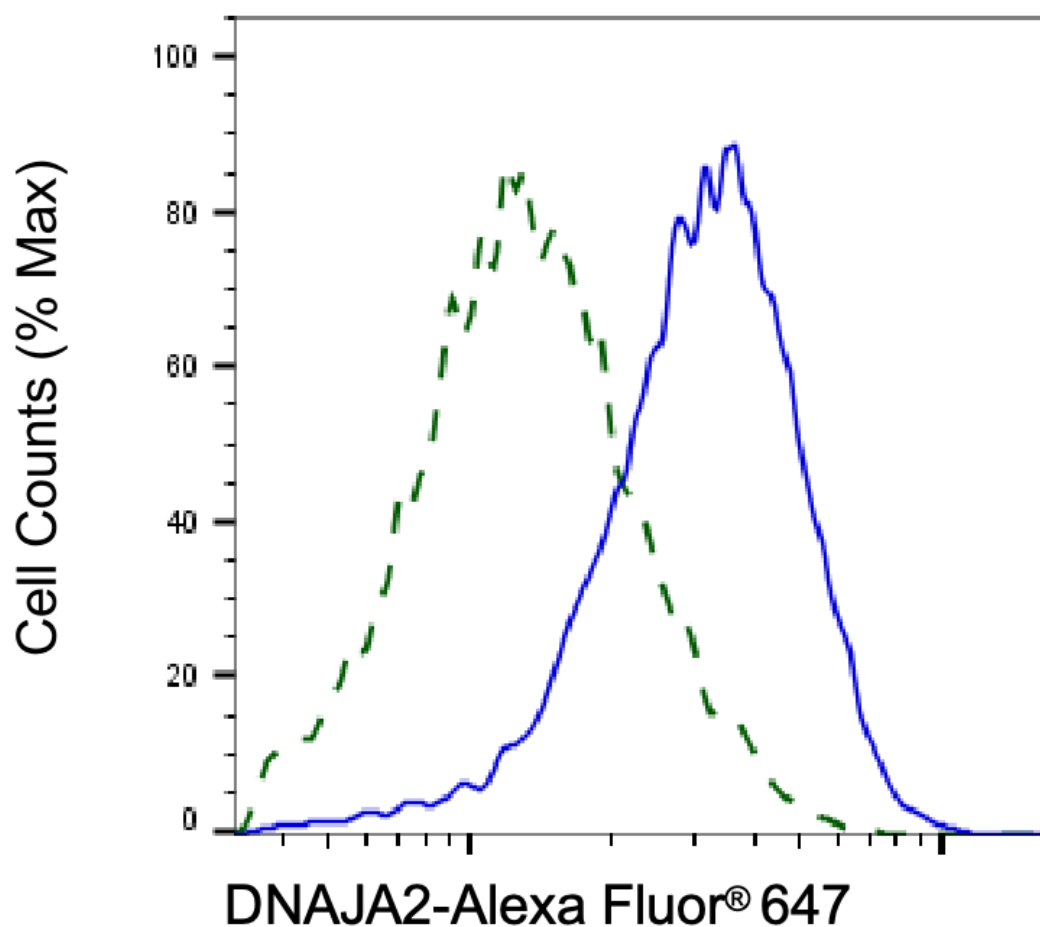
SUPPORT

SUPPORT@GENUINBIOTECH.COM
TEL: +1-540-855-7041

ORDERS

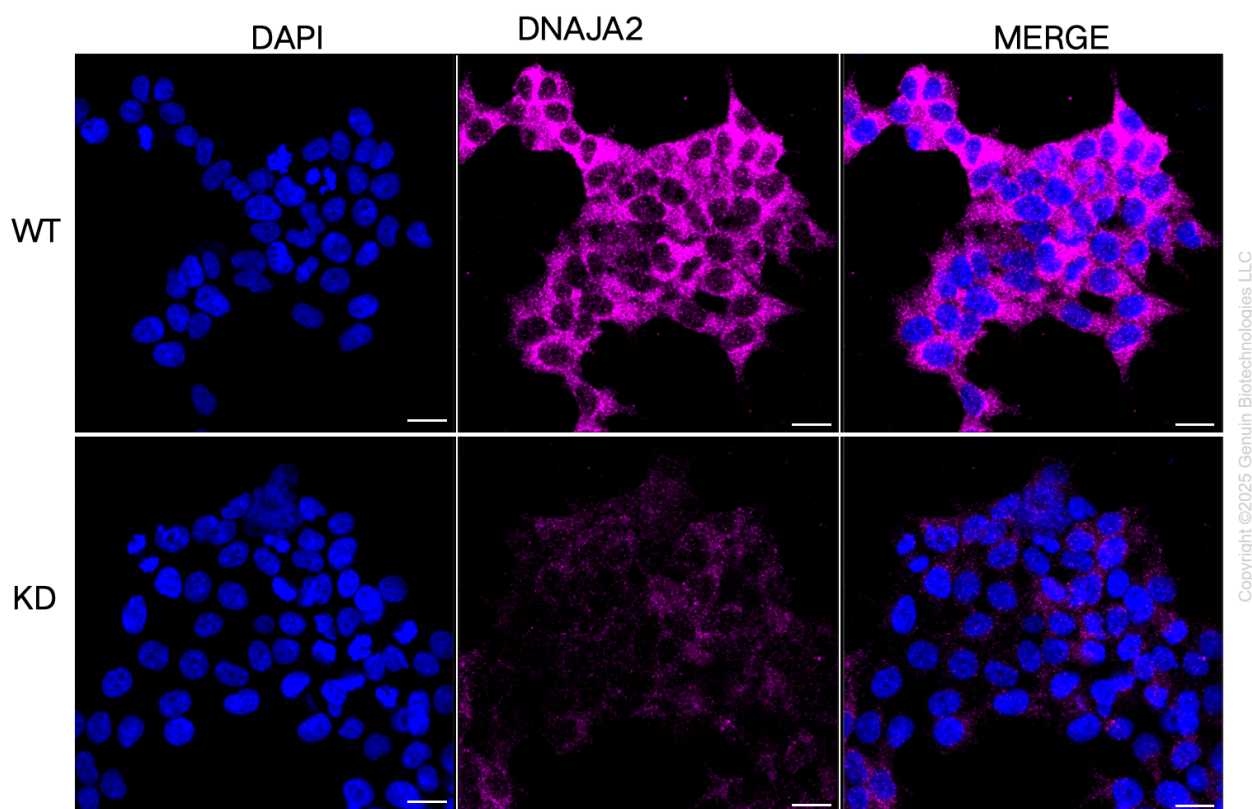
SALES@GENUINBIOTECH.COM
FAX: +1-540-855-7041

WWW.GENUINBIOTECH.COM



Copyright ©2025 Genuin Biotechnologies LLC

Validation of DNAJA2 knockdown using flow cytometry. Wild-type(WT, Blue) and knockdown(KD, Green) HeLa cells were stained with anti-DNAJA2 antibody (Cat#63838, 1:2,000) and analyzed using BD flow cytometer.



Immunocytochemical staining of HeLa cells using anti-DNAJA2 antibody (Cat#63838, 1:1,000), Top panel: wild-type (WT); Bottom panel: DNAJA2 shRNA knockdown (KD). Nuclei were stained blue with DAPI; DNAJA2 was stained magenta with Alexa Fluor® 647. Scale bar, 20 μ m.