

# KD-Validated Anti-DNAJA2 Mouse Monoclonal Antibody



**Catalog #: 63839**

## Aliases

DNAJA2; DnaJ Heat Shock Protein Family (Hsp40) Member A2; HIRIP4; CPR3; DNAJ; DNJ3; Cell Cycle Progression Restoration Gene 3 Protein; DnaJ (Hsp40) Homolog, Subfamily A, Member 2; DnaJ Homolog Subfamily A Member; Renal Carcinoma Antigen NY-REN-14; Cell Cycle Progression 3 Protein; HIRA Interacting Protein 4; HIRA-Interacting Protein 4; PRO3015; DJA2; RDJ2; Dnj3; DJ3; Dj3

## Background

Gene Name: DNAJA2

NCBI Gene Entry: [10294](#)

UniProt Entry: [O60884](#)

## Application Information

Molecular Weight: Predicted, 46 kDa; observed, 46 kDa

Clonality: Mouse monoclonal antibody

Clone ID: 24GB8125

Species Reactivity: Human, mouse, rat

Applications Tested: Western blotting (WB), flow cytometry (FCM), immunocytochemistry (IC)

## Immunogen

Recombinant protein of human DNAJA2

## Isotype

Mouse IgG2a

## Storage Buffer

Supplied in PBS (pH 7.4) containing 50% glycerol, and 0.02% sodium azide.

## Storage

Store at -20 °C for one year.

## Recommended Dilutions

Western Blotting (WB): 1:500-1:2,500

Flow Cytometry (FCM): 1:1,000

Immunocytochemistry (IC): 1:100-1:1,000

---

### SUPPORT

SUPPORT@GENUINBIOTECH.COM  
TEL: +1-540-855-7041

### ORDERS

SALES@GENUINBIOTECH.COM  
FAX: +1-540-855-7041

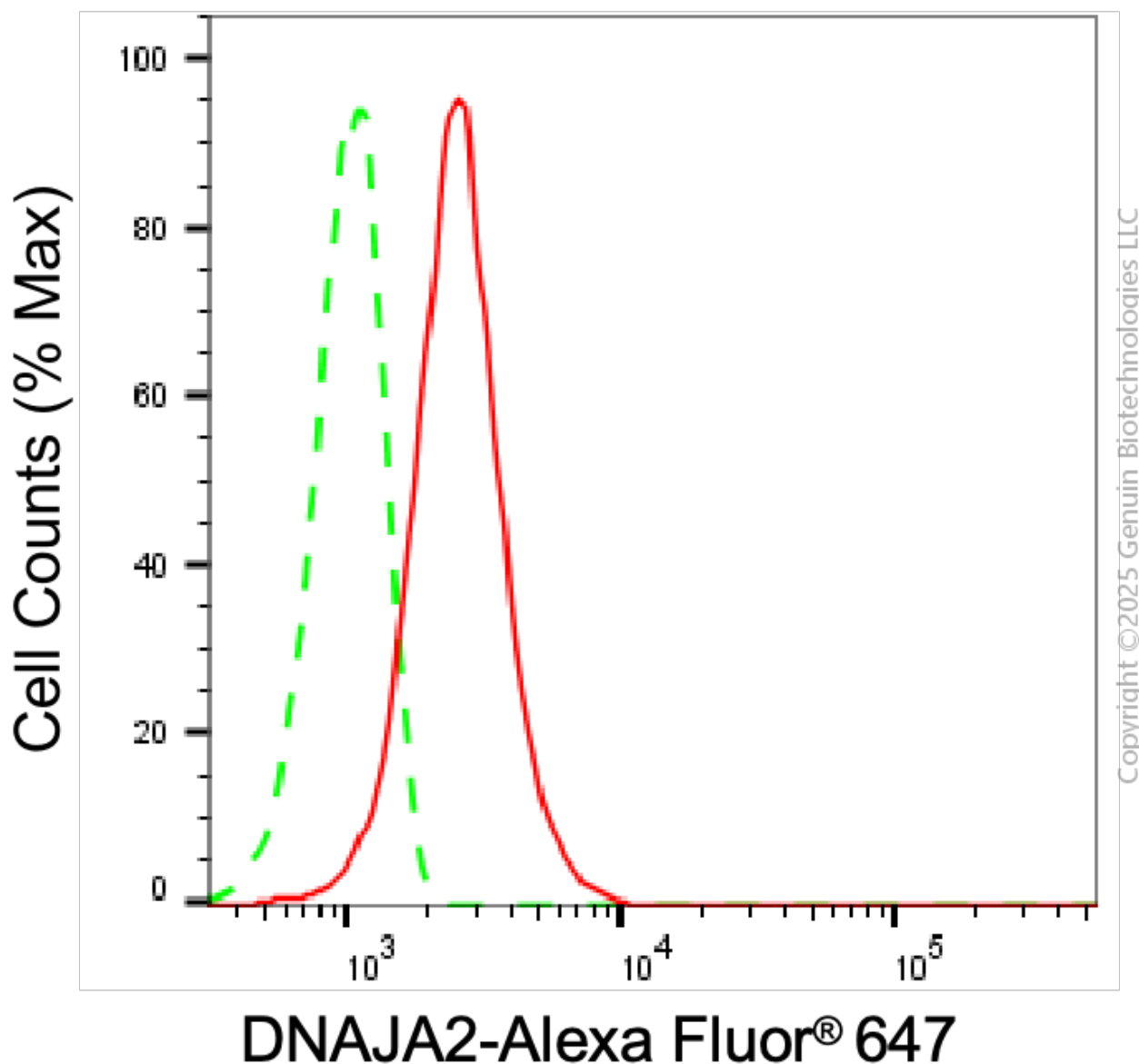
[WWW.GENUINBIOTECH.COM](http://WWW.GENUINBIOTECH.COM)

## KD-Validated Anti-DNAJA2 Mouse Monoclonal Antibody

PAGE 2

**Note:** This product is for research use only.

### Validation Data



Copyright ©2025 Genuin Biotechnologies LLC

Flow cytometric analysis of DNAJA2 expression in C2C12 cells using anti-DNAJA2 antibody (Cat#63839, 1:1,000). Green, isotype control; red, DNAJA2.

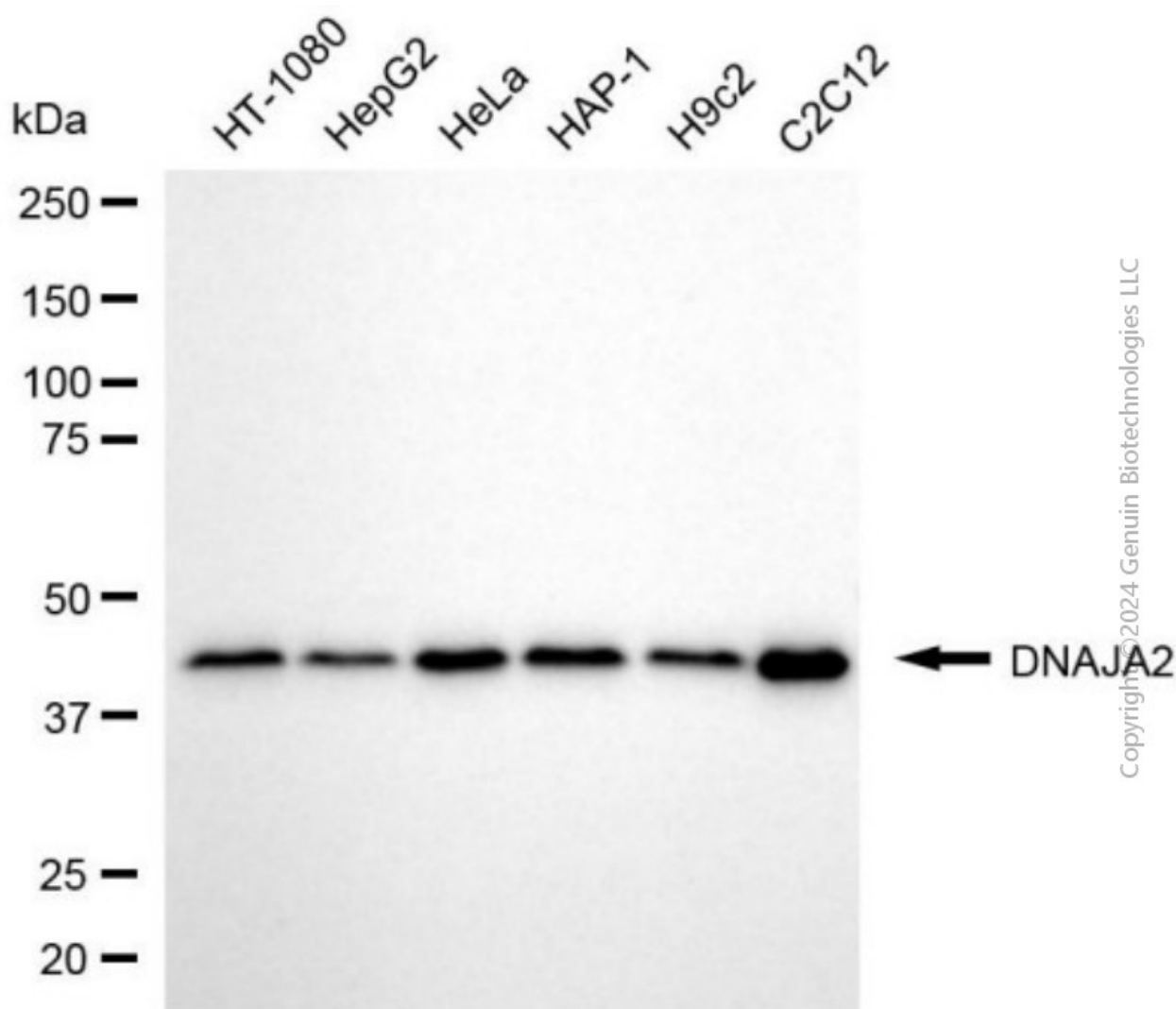
#### SUPPORT

SUPPORT@GENUINBIOTECH.COM  
TEL: +1-540-855-7041

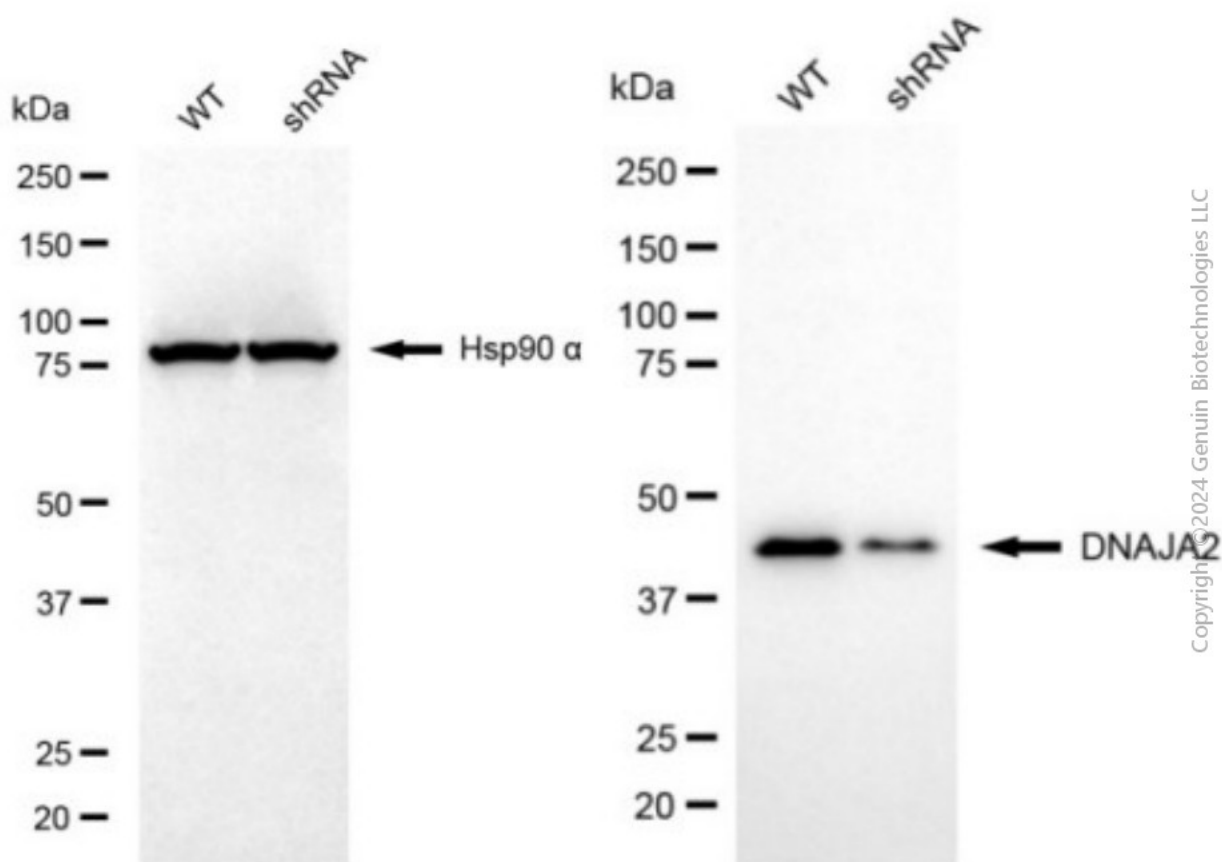
#### ORDERS

SALES@GENUINBIOTECH.COM  
FAX: +1-540-855-7041

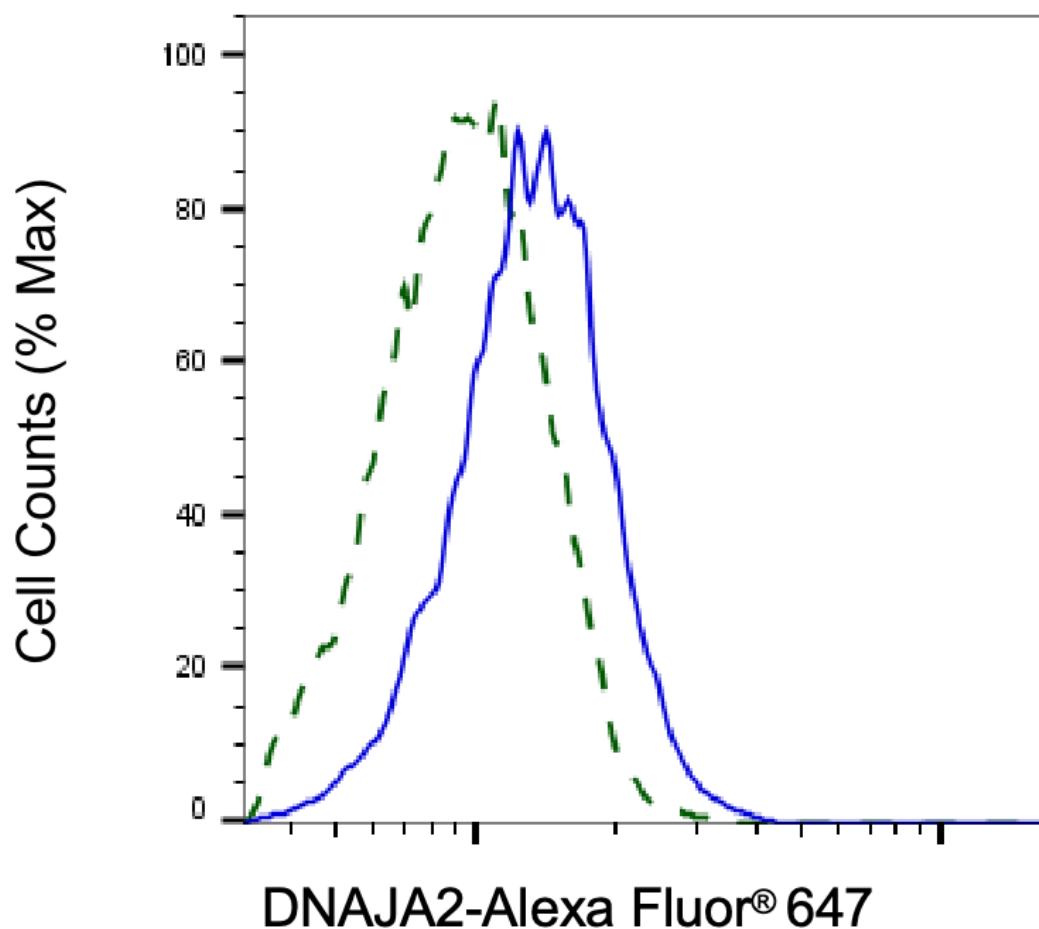
[WWW.GENUINBIOTECH.COM](http://WWW.GENUINBIOTECH.COM)



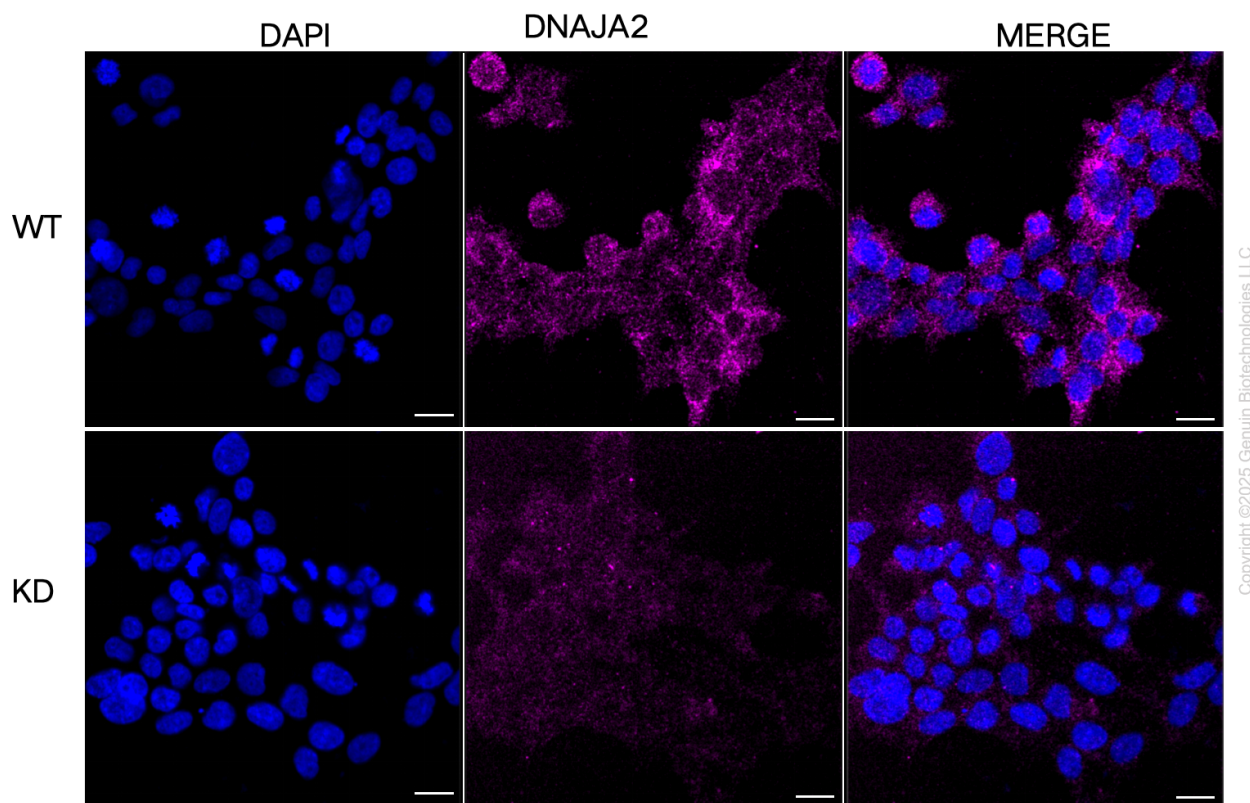
Western blotting analysis using anti-DNAJA2 antibody (Cat#63839). Total cell lysates (10  $\mu$ g for C2C12 and 30  $\mu$ g for others) from various cell lines were loaded and separated by SDS-PAGE. The blot was incubated with anti-DNAJA2 antibody (Cat#63839, 1:2,500) and HRP-conjugated goat anti-mouse secondary antibody (Cat#101, 1:20,000) respectively. Image was developed using NaQ™ ECL Substrate Kit (Cat#716).



Western blotting analysis using anti-DNAJA2 antibody (Cat#63839). DNAJA2 expression in wild type (WT) and DNAJA2 shRNA knockdown (KD) HeLa cells with 20  $\mu$ g of total cell lysates. Hsp90  $\alpha$  serves as a loading control. The blot was incubated with anti-DNAJA2 antibody (Cat#63839, 1:2,500) and HRP-conjugated goat anti-mouse secondary antibody (Cat#101, 1:20,000) respectively. Image was developed using NaQ<sup>TM</sup> ECL Substrate Kit (Cat#716).



Validation of DNAJA2 knockdown using flow cytometry. Wild-type(WT, Blue) and knockdown(KD, Green) HeLa cells were stained with anti-DNAJA2 antibody (Cat#63839, 1:2,000) and analyzed using BD flow cytometer.



Immunocytochemical staining of HeLa cells using anti-DNAJA2 antibody (Cat#63839, 1:1,000), Top panel: wild-type (WT); Bottom panel: DNAJA2 shRNA knockdown (KD). Nuclei were stained blue with DAPI; DNAJA2 was stained magenta with Alexa Fluor® 647. Scale bar, 20  $\mu$ m.