

KD-Validated Anti-EIF2B3 Mouse Monoclonal Antibody



Catalog #: 63844

Aliases

EIF2B3; Eukaryotic Translation Initiation Factor 2B Subunit Gamma; EIF2Bgamma; EIF-2B; Eukaryotic Translation Initiation Factor 2B, Subunit 3 Gamma, 58kDa; Translation Initiation Factor EIF2B Subunit Gamma; EIF2B GDP-GTP Exchange Factor Subunit Gamma; Eukaryotic Translation Initiation Factor 2B, Subunit 3 (Gamma, 58kD); Translation Initiation Factor EIF-2B Subunit Gamma; EIF-2B GDP-GTP Exchange Factor Subunit Gamma; VWM3

Background

Gene Name: EIF2B3

NCBI Gene Entry: [8891](#)

UniProt Entry: [Q9NR50](#)

Application Information

Molecular Weight: Predicted, 50 kDa; observed, 50 kDa

Clonality: Mouse monoclonal antibody

Clone ID: 24GB8150

Species Reactivity: Human, mouse, rat

Applications Tested: Western blotting (WB), flow cytometry (FCM)

Immunogen

Recombinant protein of human EIF2B3

Isotype

Mouse IgG1

Storage Buffer

Supplied in PBS (pH 7.4) containing 50% glycerol, and 0.02% sodium azide.

Storage

Store at -20 °C for one year.

Recommended Dilutions

Western Blotting (WB): 1:500-1:2,500

Flow Cytometry (FCM): 1:1,000

SUPPORT

SUPPORT@GENUINBIOTECH.COM
TEL: +1-540-855-7041

ORDERS

SALES@GENUINBIOTECH.COM
FAX: +1-540-855-7041

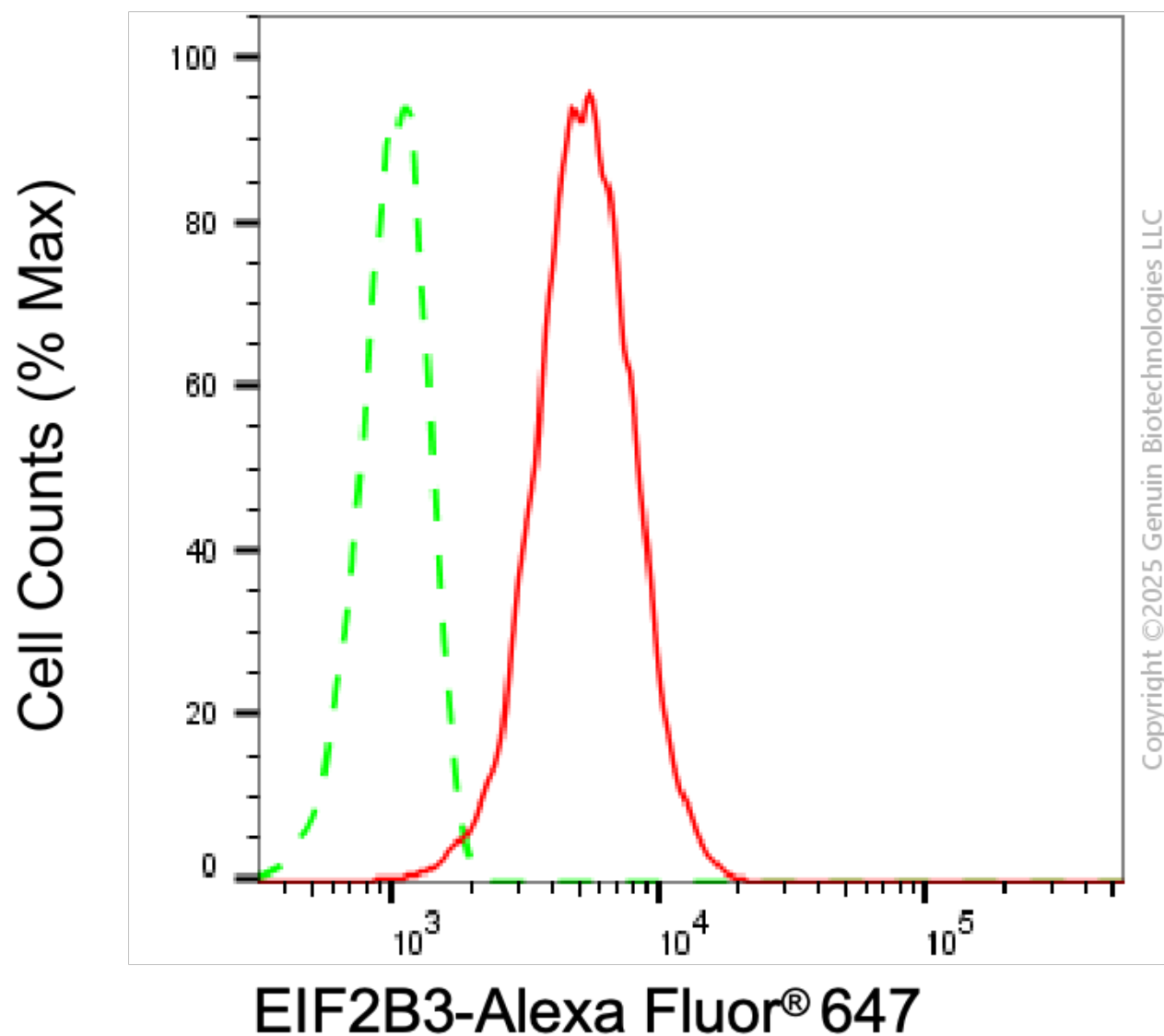
WWW.GENUINBIOTECH.COM

KD-Validated Anti-EIF2B3 Mouse Monoclonal Antibody

PAGE 2

Note: This product is for research use only.

Validation Data



Flow cytometric analysis of EIF2B3 expression in C2C12 cells using anti-EIF2B3 antibody (Cat#63844, 1:1,000). Green, isotype control; red, EIF2B3.

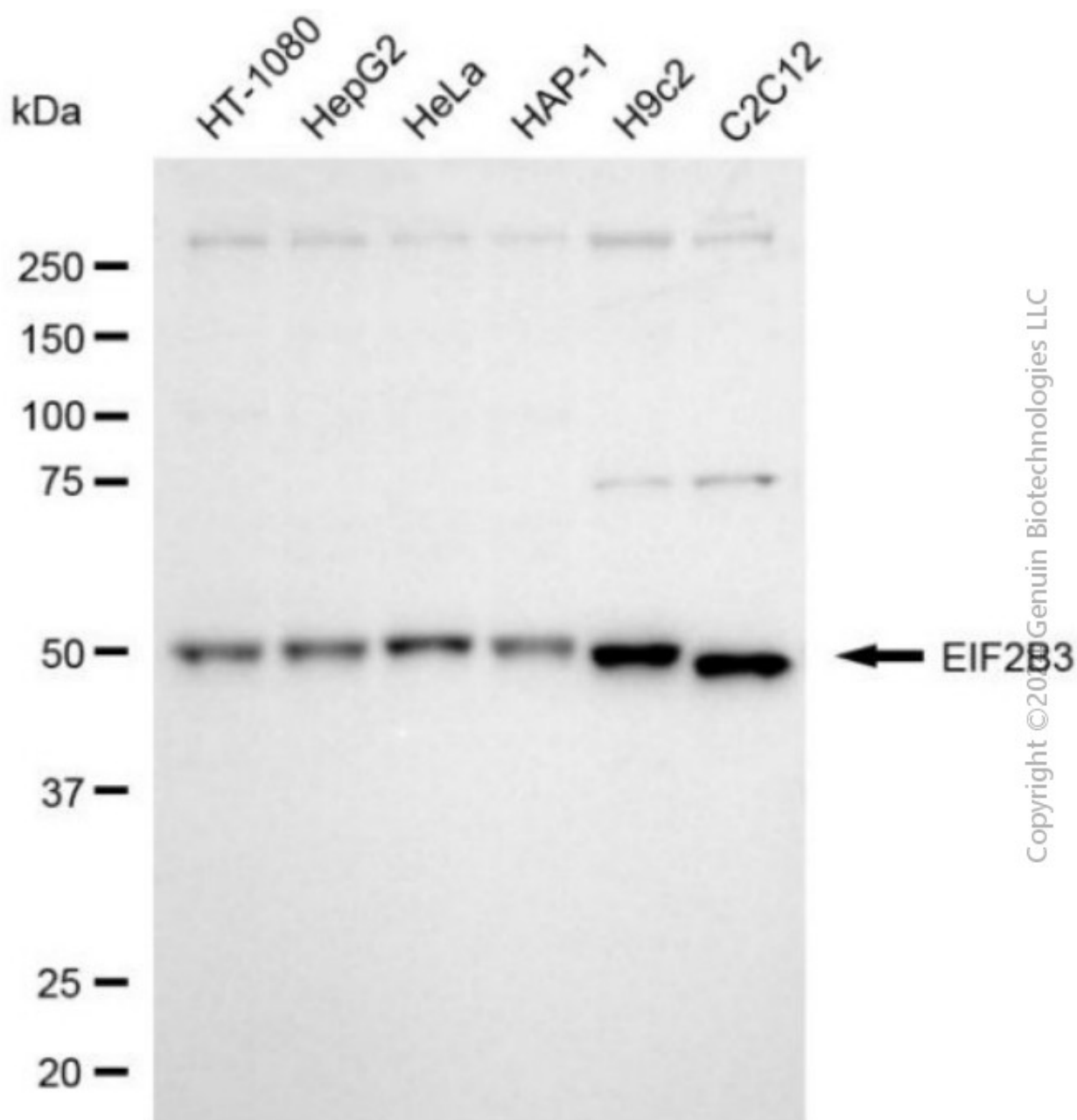
SUPPORT

SUPPORT@GENUINBIOTECH.COM
TEL: +1-540-855-7041

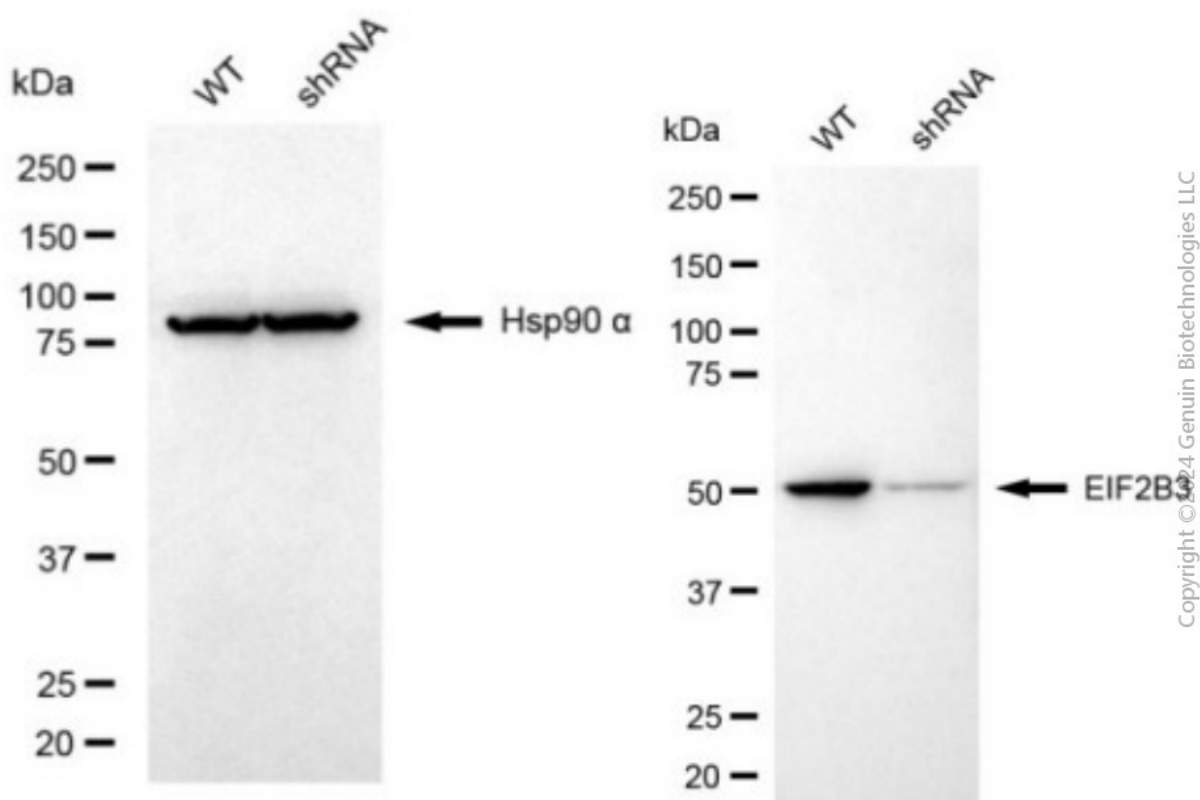
ORDERS

SALES@GENUINBIOTECH.COM
FAX: +1-540-855-7041

WWW.GENUINBIOTECH.COM



Western blotting analysis using anti-EIF2B3 antibody (Cat#63844). Total cell lysates (30 µg) from various cell lines were loaded and separated by SDS-PAGE. The blot was incubated with anti-EIF2B3 antibody (Cat#63844, 1:2,500) and HRP-conjugated goat anti-mouse secondary antibody (Cat#101, 1:20,000) respectively. Image was developed using FeQ™ ECL Substrate Kit (Cat#226).



Western blotting analysis using anti-EIF2B3 antibody (Cat#63844). EIF2B3 expression in wild type (WT) and EIF2B3 shRNA knockdown (KD) HeLa cells with 20 µg of total cell lysates. Hsp90 α serves as a loading control. The blot was incubated with anti-EIF2B3 antibody (Cat#63844, 1:2,500) and HRP-conjugated goat anti-mouse secondary antibody (Cat#101, 1:20,000) respectively. Image was developed using NaQ™ ECL Substrate Kit (Cat#716).