

# KD-Validated Anti-FBXO21 Mouse Monoclonal Antibody



**Catalog #: 63846**

## Aliases

FBXO21; F-Box Protein 21; FBX21; F-Box Only Protein 21; KIAA0875

## Background

Gene Name: FBXO21

NCBI Gene Entry: [23014](#)

UniProt Entry: [O94952](#)

## Application Information

Molecular Weight: Predicted, 72 kDa; observed, 72 kDa

Clonality: Mouse monoclonal antibody

Clone ID: 24GB8160

Species Reactivity: Human, mouse, rat

Applications Tested: Western blotting (WB), flow cytometry (FCM)

## Immunogen

Recombinant protein of human FBXO21

## Isotype

Mouse IgG2a

## Storage Buffer

Supplied in PBS (pH 7.4) containing 50% glycerol, and 0.02% sodium azide.

## Storage

Store at -20 °C for one year.

## Recommended Dilutions

Western Blotting (WB): 1:200-1:1,000

Flow Cytometry (FCM): 1:1,000

**Note:** This product is for research use only.

## Validation Data

---

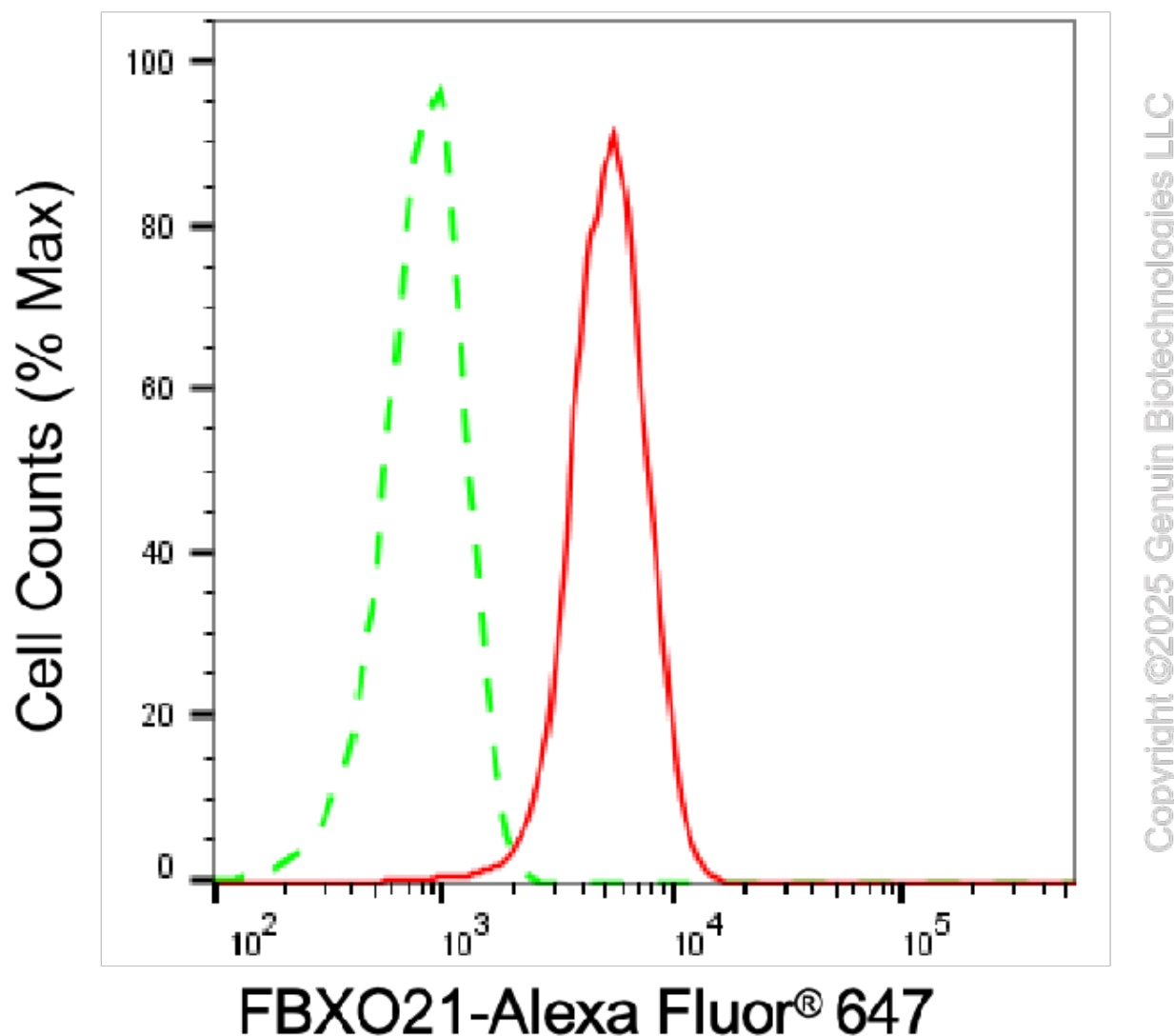
### SUPPORT

SUPPORT@GENUINBIOTECH.COM  
TEL: +1-540-855-7041

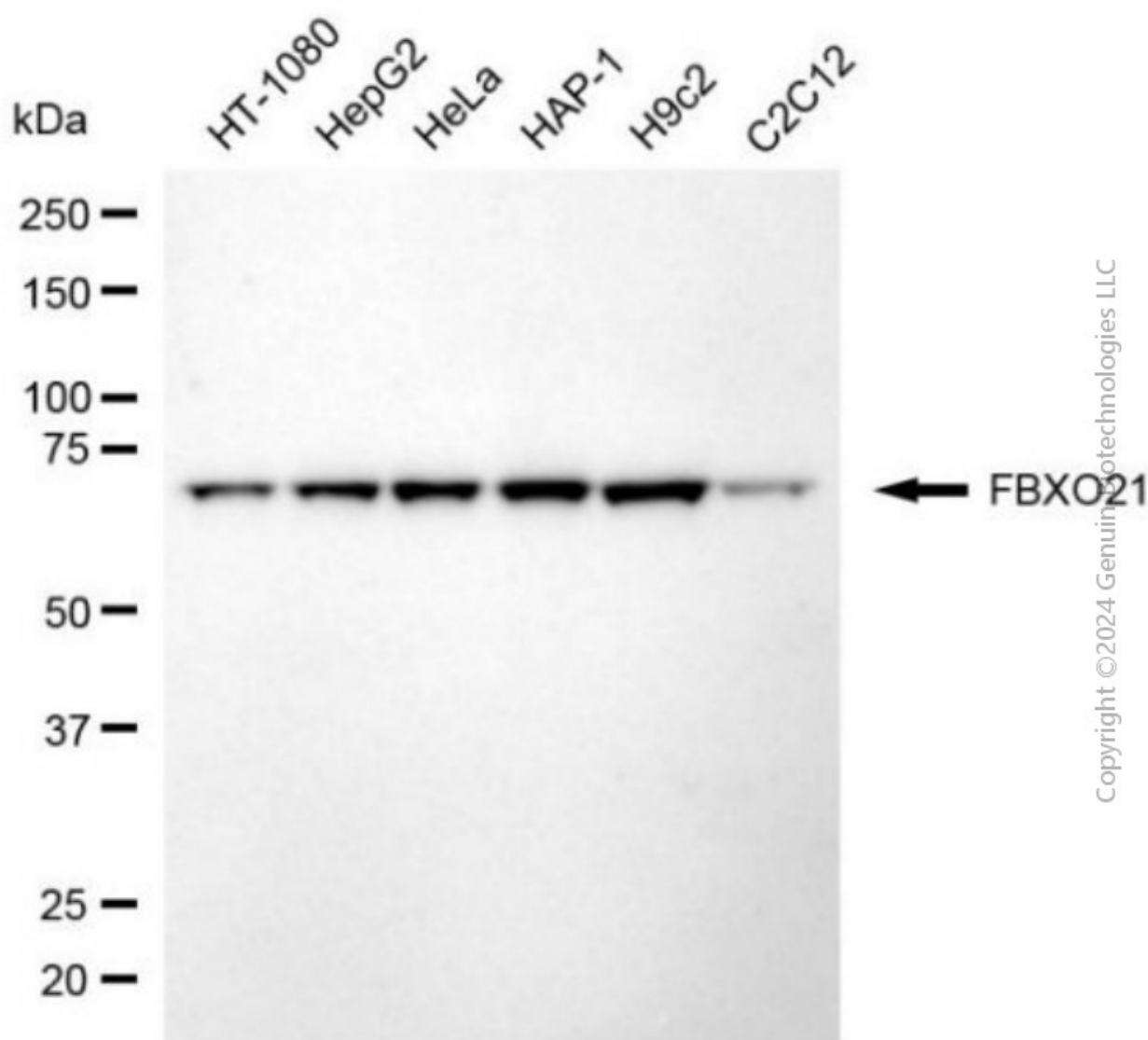
### ORDERS

SALES@GENUINBIOTECH.COM  
FAX: +1-540-855-7041

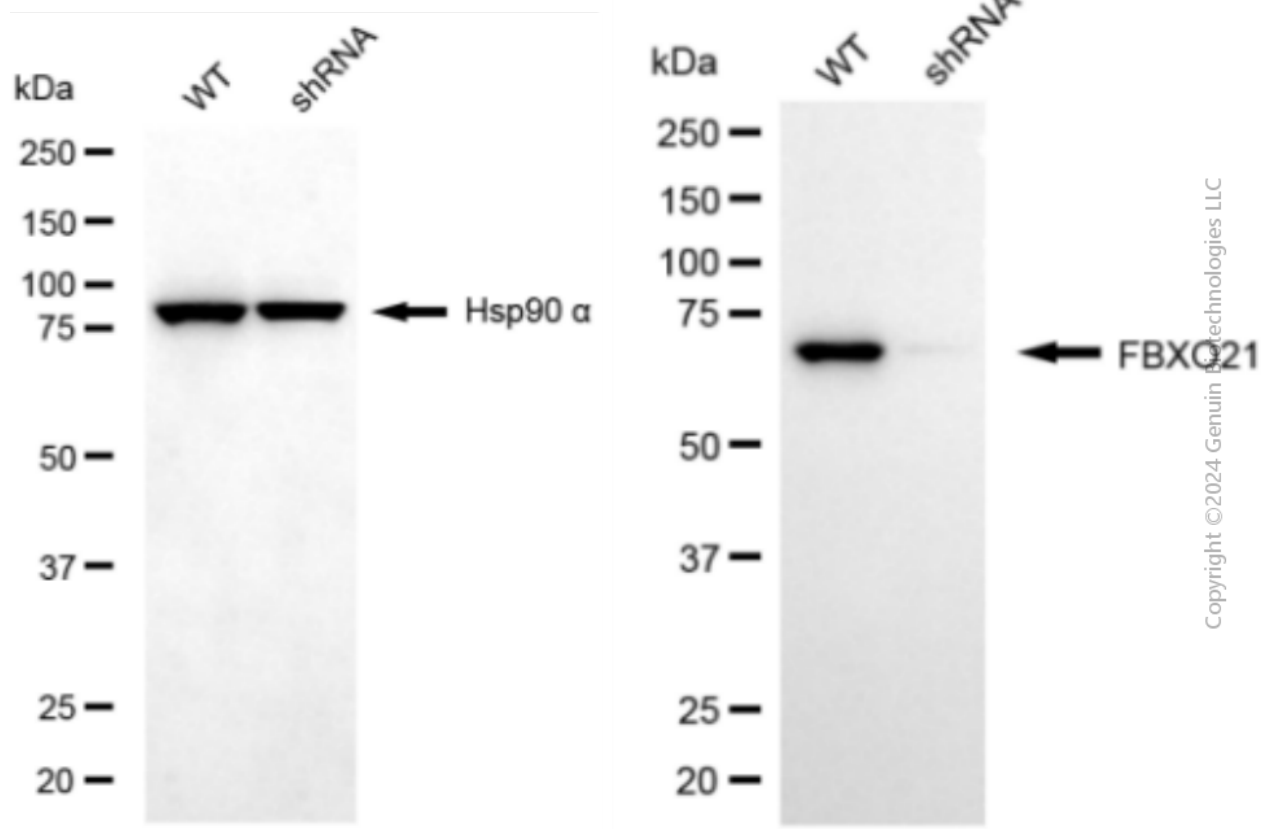
[WWW.GENUINBIOTECH.COM](http://WWW.GENUINBIOTECH.COM)



Flow cytometric analysis of FBXO21 expression in HAP-1 cells using anti-FBXO21 antibody (Cat#63846, 1:1,000). Green, isotype control; red, FBXO21.



Western blotting analysis using anti-FBXO21 antibody (Cat#63846). Total cell lysates (30 µg) from various cell lines were loaded and separated by SDS-PAGE. The blot was incubated with anti-FBXO21 antibody (Cat#63846, 1:2,500) and HRP-conjugated goat anti-mouse secondary antibody (Cat#101, 1:20,000) respectively. Image was developed using NaQ™ ECL Substrate Kit (Cat#716).



Western blotting analysis using anti-FBXO21 antibody (Cat#63846). FBXO21 expression in wild type (WT) and FBXO21 shRNA knockdown (KD) HeLa cells with 20  $\mu$ g of total cell lysates. Hsp90  $\alpha$  serves as a loading control. The blot was incubated with anti-FBXO21 antibody (Cat#63846, 1:2,500) and HRP-conjugated goat anti-mouse secondary antibody (Cat#101, 1:20,000) respectively. Image was developed using NaQ<sup>TM</sup> ECL Substrate Kit (Cat#716).