

# KD-Validated Anti-DNM1L Mouse Monoclonal Antibody



**Catalog #: 63857**

## Aliases

DNM1L; Dynamin 1 Like; DRP1; DVLP; HDYNIV; DYMPLE; Dynamin Family Member Proline-Rich Carboxyl-Terminal Domain Less; Dynamin-Related Protein 1; Dnm1p/Vps1p-Like Protein; Dynamin-Like Protein IV; Dynamin-1-Like Protein; Dynamin-Like Protein 4; EC 3.6.5.5; VPS1; DLP1; Dynamin-Like Protein; Dymple; HdynIV; EMPF1; EMPF; OPA5

## Background

Gene Name: DNM1L

NCBI Gene Entry: [10059](#)

UniProt Entry: [O00429](#)

## Application Information

Molecular Weight: Predicted, 82 kDa; observed, 74 kDa

Clonality: Mouse monoclonal antibody

Clone ID: 24GB8215

Species Reactivity: Human, mouse, rat

Applications Tested: Western blotting (WB), flow cytometry (FCM), immunocytochemistry (IC)

## Immunogen

Recombinant protein of human DNM1L

## Isotype

Mouse IgG2b

## Storage Buffer

Supplied in PBS (pH 7.4) containing 50% glycerol, and 0.02% sodium azide.

## Storage

Store at -20 °C for one year.

## Recommended Dilutions

Western Blotting (WB): 1:1,000-1:5,000

Immunohistochemistry (IHC): 1:100-1:1,000

Flow Cytometry (FCM) : 1:2,000

---

### SUPPORT

SUPPORT@GENUINBIOTECH.COM  
TEL: +1-540-855-7041

### ORDERS

SALES@GENUINBIOTECH.COM  
FAX: +1-540-855-7041

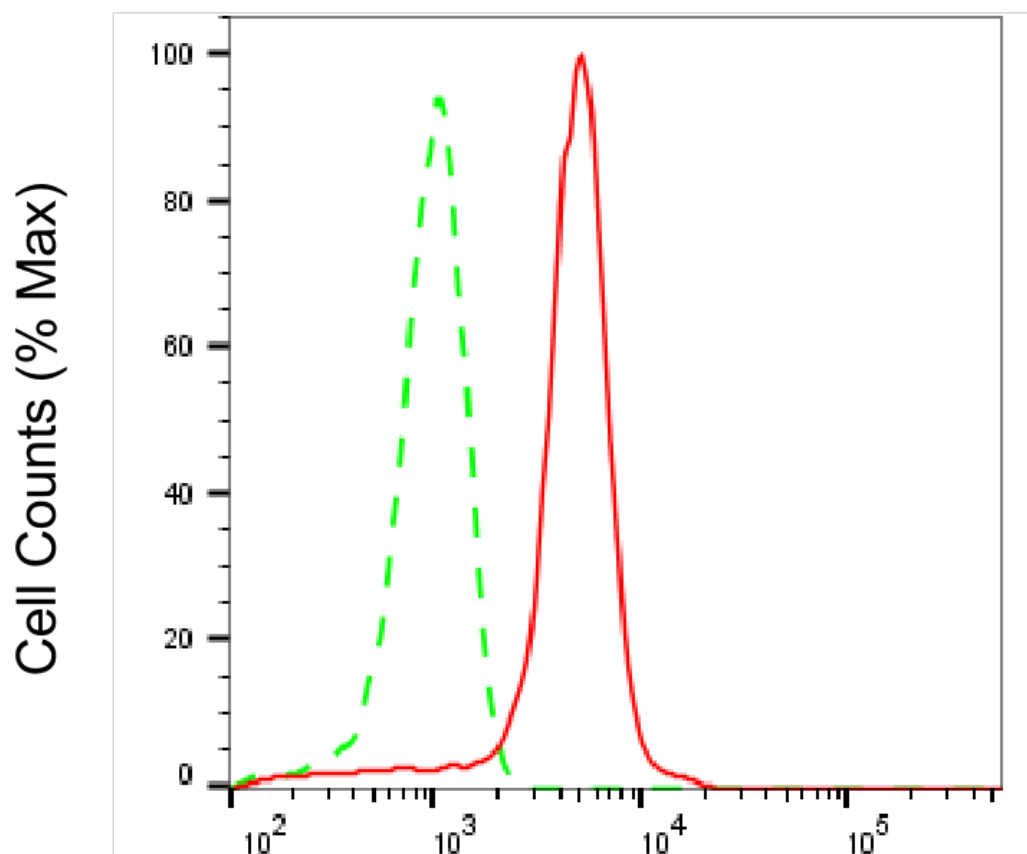
[WWW.GENUINBIOTECH.COM](http://WWW.GENUINBIOTECH.COM)

## KD-Validated Anti-DNM1L Mouse Monoclonal Antibody

PAGE 2

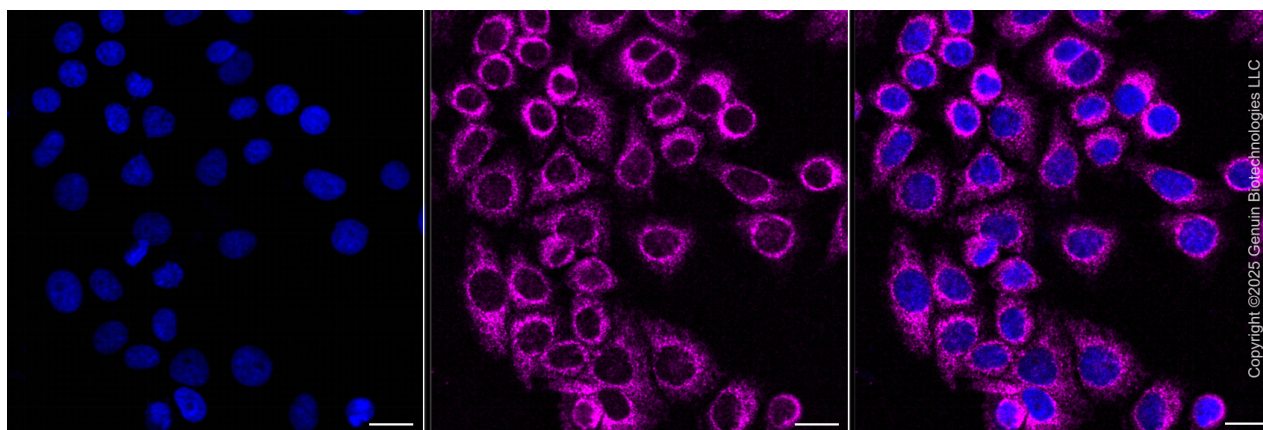
**Note:** This product is for research use only.

### Validation Data



### Dynamin 1 like-Alexa Fluor® 647

Flow cytometric analysis of Dynamin 1 like expression in HepG2 cells using anti-Dynamin 1 like antibody (Cat#63857, 1:1,000). Green, isotype control; red, Dynamin 1 like.



#### SUPPORT

SUPPORT@GENUINBIOTECH.COM  
TEL: +1-540-855-7041

#### ORDERS

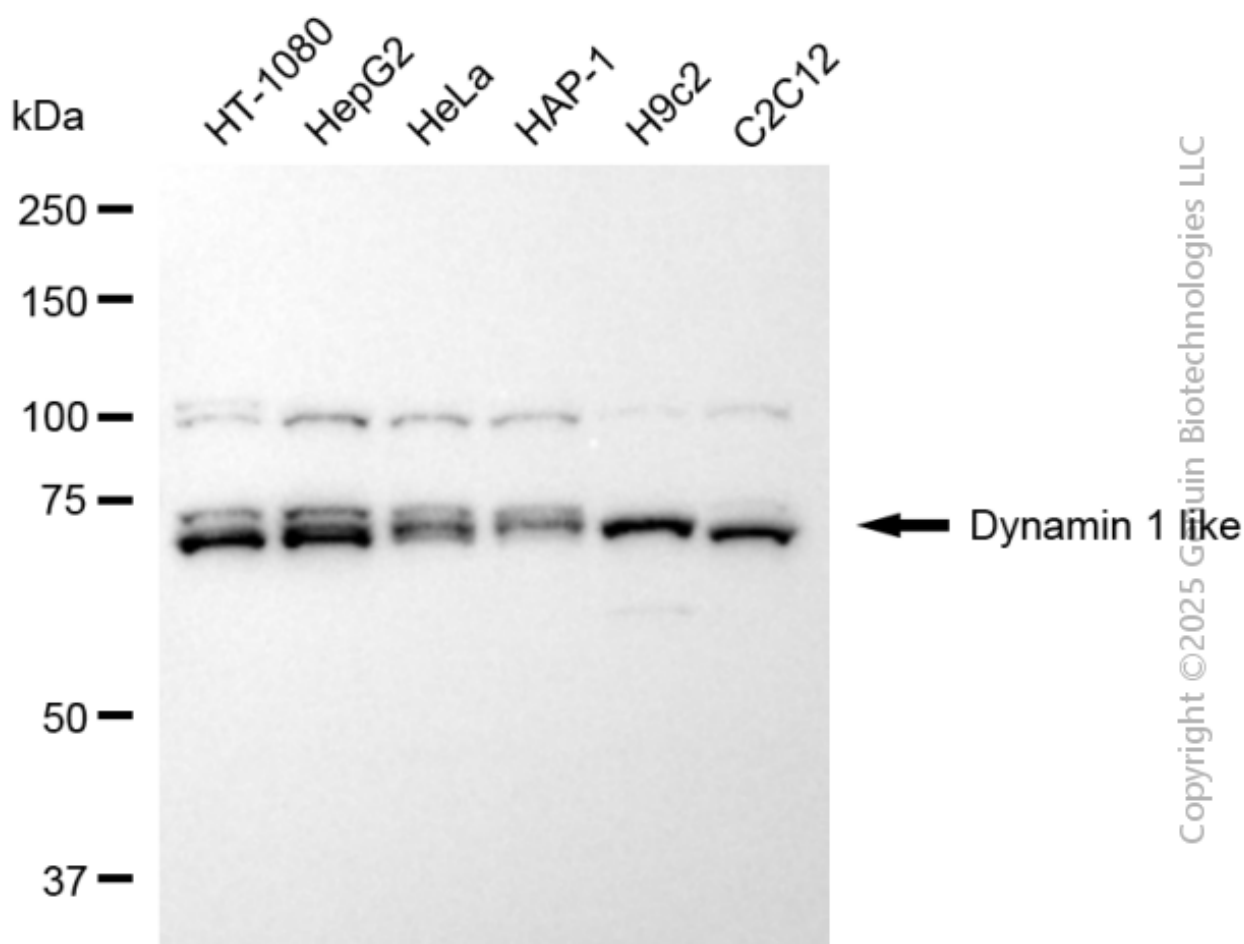
SALES@GENUINBIOTECH.COM  
FAX: +1-540-855-7041

WWW.GENUINBIOTECH.COM

## KD-Validated Anti-DNM1L Mouse Monoclonal Antibody

PAGE 3

Immunocytochemical staining of HepG2 cells with anti-Dynamin 1 like protein antibody (Cat#63857, 1:500). Nuclei were stained blue with DAPI; Dynamin 1 like was stained magenta with Alexa Fluor® 647. Images were taken using Leica stellaris 5. Protein abundance based on laser Intensity and smart gain: Medium. Scale bar, 20 µm.



Western blotting analysis using anti-dynamin 1 like antibody (Cat#63857). Total cell lysates (30 µg) from various cell lines were loaded and separated by SDS-PAGE. The blot was incubated with anti-dynamin 1 like antibody (Cat#63857, 1:5,000) and HRP-conjugated goat anti-mouse secondary antibody (Cat#101, 1:20,000) respectively. Image was developed using FeQ™ ECL Substrate Kit (Cat#226).

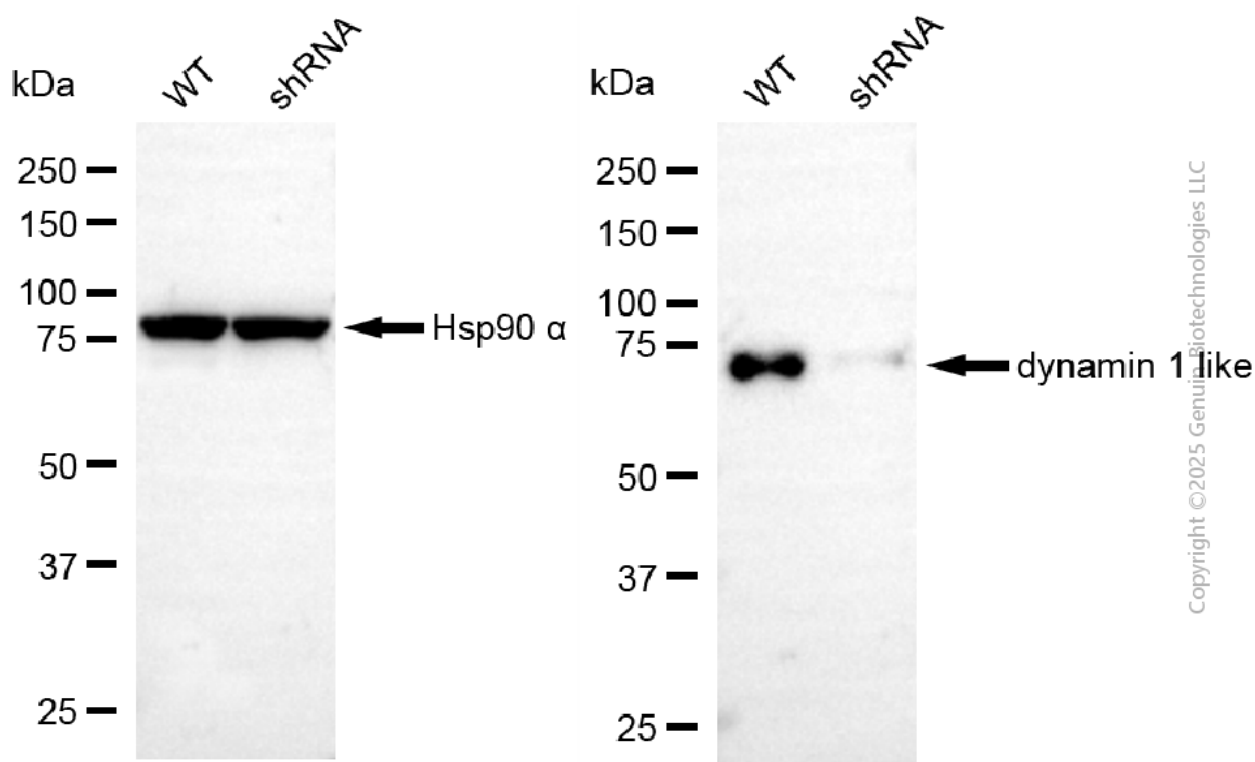
### SUPPORT

SUPPORT@GENUINBIOTECH.COM  
TEL: +1-540-855-7041

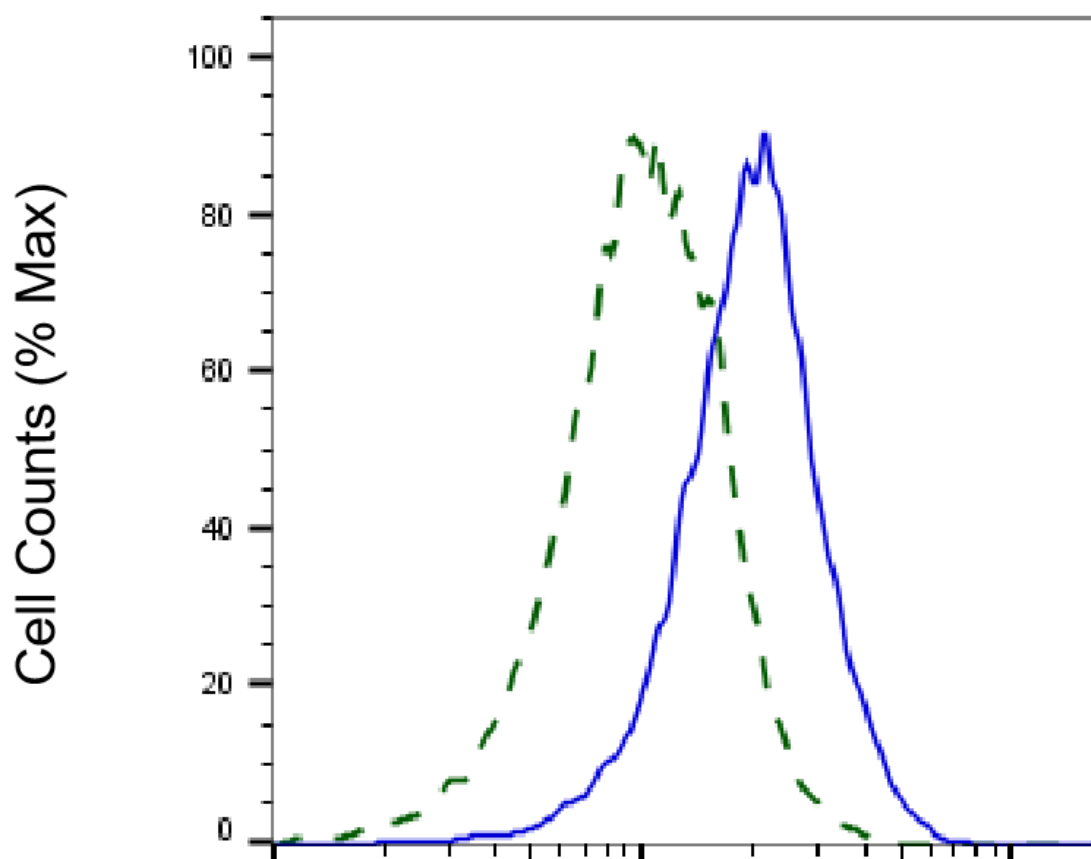
### ORDERS

SALES@GENUINBIOTECH.COM  
FAX: +1-540-855-7041

WWW.GENUINBIOTECH.COM



Western blotting analysis using anti-dynamin 1 like antibody (Cat#63857). Dynamin 1 like expression in wild type (WT) and dynamin 1 like (DNM1L) shRNA knockdown (KD) HeLa cells with 20 µg of total cell lysates. Hsp90 α serves as a loading control. The blot was incubated with anti-dynamin 1 like antibody (Cat#63857, 1:5,000) and HRP-conjugated goat anti-mouse secondary antibody (Cat#101, 1:20,000) respectively. Image was developed using FeQ™ ECL Substrate Kit (Cat#226).



Copyright ©2025 Genuin Biotechnologies LLC

## Dynamin 1 like-Alexa Fluor® 647

Validation of Dynamin 1 like knockdown using flow cytometry. Wild-type(WT, Blue) and knockdown(KD, Green) HeLa cells were stained with anti-Dynamin 1 like antibody (Cat#63857, 1:2,000) and analyzed using BD flow cytometer.