

# KD-Validated Anti-Epoxyde Hydrolase 1 Mouse Monoclonal Antibody



**Catalog #: 63860**

## Aliases

EPHX1; Epoxyde Hydrolase 1; EPHX; Epoxyde Hydrolase 1, Microsomal (Xenobiotic); Epoxyde Hydratase; EPOX; MEH; Epoxyde Hydrolase 1 Microsomal; Microsomal Epoxyde Hydrolase; EC 3.3.2.9; HYL1

## Background

Gene Name: EPHX1

NCBI Gene Entry: [2052](#)

UniProt Entry: [P07099](#)

## Application Information

Molecular Weight: Predicted, 53 kDa; observed, 48 kDa

Clonality: Mouse monoclonal antibody

Clone ID: 24GB8230

Species Reactivity: Human

Applications Tested: Western blotting (WB), immunocytochemistry (IC)

## Immunogen

Recombinant protein of human EPHX1

## Isotype

Mouse IgG2a

## Storage Buffer

Supplied in PBS (pH 7.4) containing 50% glycerol, and 0.02% sodium azide.

## Storage

Store at -20 °C for one year.

## Recommended Dilutions

Western Blotting (WB): 1:500-1:2,500

Immunocytochemistry (IC): 1:100-1:1,000

**Note:** This product is for research use only.

## Validation Data

---

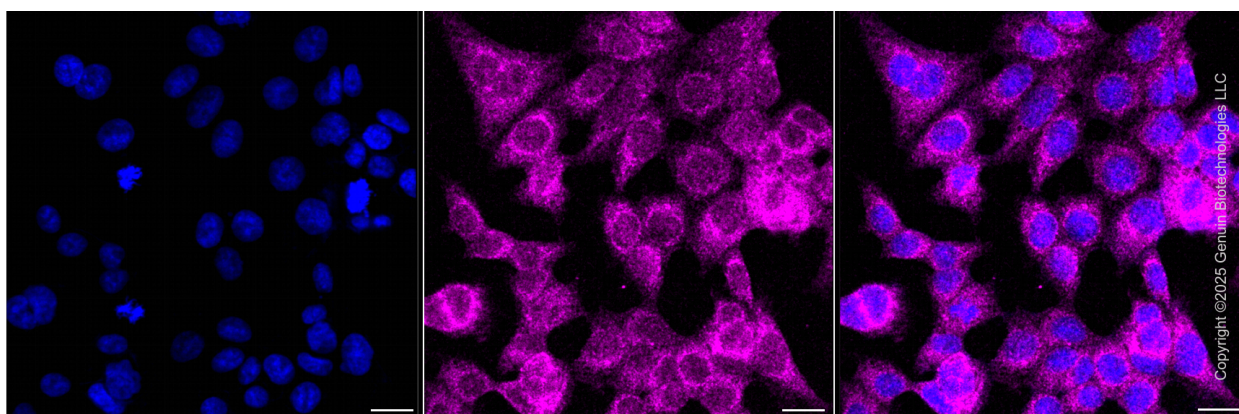
### SUPPORT

SUPPORT@GENUINBIOTECH.COM  
TEL: +1-540-855-7041

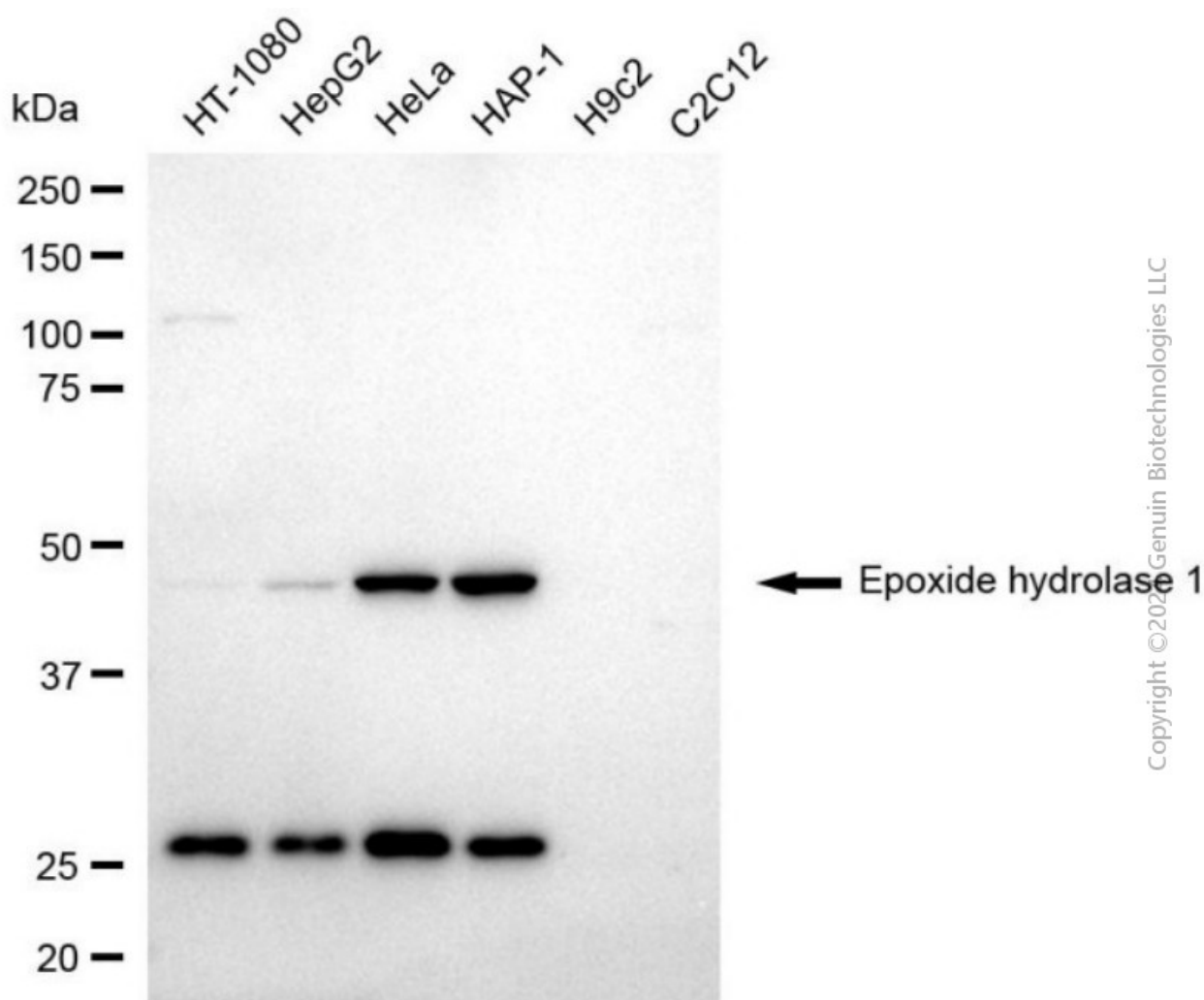
### ORDERS

SALES@GENUINBIOTECH.COM  
FAX: +1-540-855-7041

[WWW.GENUINBIOTECH.COM](http://WWW.GENUINBIOTECH.COM)



Immunocytochemical staining of HAP1 cells with anti-Epoxyde hydrolase 1 antibody (Cat#63860, 1:500) . Nuclei were stained blue with DAPI; Epoxyde hydrolase 1 stained magenta with Alexa Fluor® 647. Images were taken using Leica stellaris 5. Protein abundance based on laser Intensity and smart gain: Low. Scale bar, 20  $\mu$ m.



Western blotting analysis using anti-epoxyde hydrolase 1 antibody (Cat#63860). Total cell lysates

## SUPPORT

SUPPORT@GENUINBIOTECH.COM  
TEL: +1-540-855-7041

## ORDERS

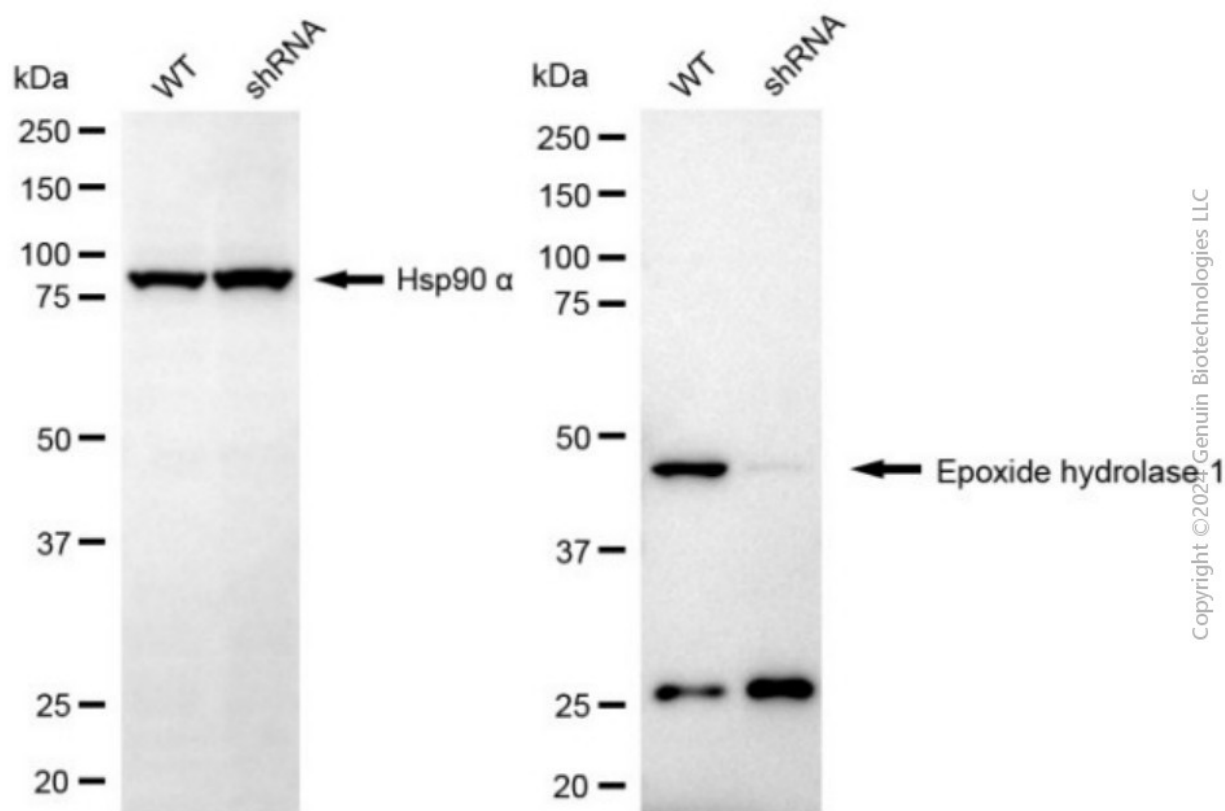
SALES@GENUINBIOTECH.COM  
FAX: +1-540-855-7041

[WWW.GENUINBIOTECH.COM](http://WWW.GENUINBIOTECH.COM)

## KD-Validated Anti-Epoxyde Hydrolase 1 Mouse Monoclonal Antibody

PAGE 3

(30 µg) from various cell lines were loaded and separated by SDS-PAGE. The blot was incubated with anti-epoxide hydrolase 1 antibody (Cat#63860, 1:2,500) and HRP-conjugated goat anti-mouse secondary antibody (Cat#101, 1:20,000) respectively. Image was developed using FeQ™ ECL Substrate Kit (Cat#226).



Western blotting analysis using anti-epoxide hydrolase 1 antibody (Cat#63860). Epoxide hydrolase 1 expression in wild-type (WT) and epoxide hydrolase 1 (EPHX1) shRNA knockdown (KD) HeLa cells with 20 µg of total cell lysates. Hsp90 α serves as a loading control. The blot was incubated with anti-epoxide hydrolase 1 antibody (Cat#63860, 1:2,500) and HRP-conjugated goat anti-mouse secondary antibody (Cat#101, 1:20,000) respectively. Image was developed using FeQ™ ECL Substrate Kit (Cat#226).

### SUPPORT

SUPPORT@GENUINBIOTECH.COM  
TEL: +1-540-855-7041

### ORDERS

SALES@GENUINBIOTECH.COM  
FAX: +1-540-855-7041

WWW.GENUINBIOTECH.COM