

# KD-Validated Anti-DDOST Mouse Monoclonal Antibody



**Catalog #: 63862**

## Aliases

DDOST; Dolichyl-Diphosphooligosaccharide--Protein Glycosyltransferase Non-Catalytic Subunit; OST48; KIAA0115; WBP1; OST; Dolichyl-Diphosphooligosaccharide--Protein Glycosyltransferase 48 KDa Subunit; Advanced Glycation End-Product Receptor 1; Oligosaccharyl Transferase 48 KDa Subunit; Oligosaccharyltransferase Subunit 48; Dolichyl-Diphosphooligosaccharide--Protein Glycosyltransferase Subunit (Non-Catalytic); Dolichyl-Diphosphooligosaccharide-Protein Glycosyltransferase; Dolichyl-Diphosphooligosaccharide-Protein Glycotransferase; Advanced Glycation Endproduct Receptor 1; Oligosaccharyltransferase 48 KDa Subunit; DDOST 48 KDa Subunit; EC 2.4.1.119; OKSWcl45; AGER1; CDG1R; GATD6

## Background

Gene Name: DDOST

NCBI Gene Entry: [1650](#)

UniProt Entry: [P39656](#)

## Application Information

Molecular Weight: Predicted, 51 kDa; observed, 49 kDa

Clonality: Mouse monoclonal antibody

Clone ID: 24GB8240

Species Reactivity: Human, mouse, rat

Applications Tested: Western blotting (WB), flow cytometry (FCM)

## Immunogen

Recombinant protein of human DDOST

## Isotype

Mouse IgG1

## Storage Buffer

Supplied in PBS (pH 7.4) containing 50% glycerol, and 0.02% sodium azide.

## Storage

Store at -20 °C for one year.

## Recommended Dilutions

Western Blotting (WB): 1:200-1:1,000

---

### SUPPORT

SUPPORT@GENUINBIOTECH.COM  
TEL: +1-540-855-7041

### ORDERS

SALES@GENUINBIOTECH.COM  
FAX: +1-540-855-7041

[WWW.GENUINBIOTECH.COM](http://WWW.GENUINBIOTECH.COM)

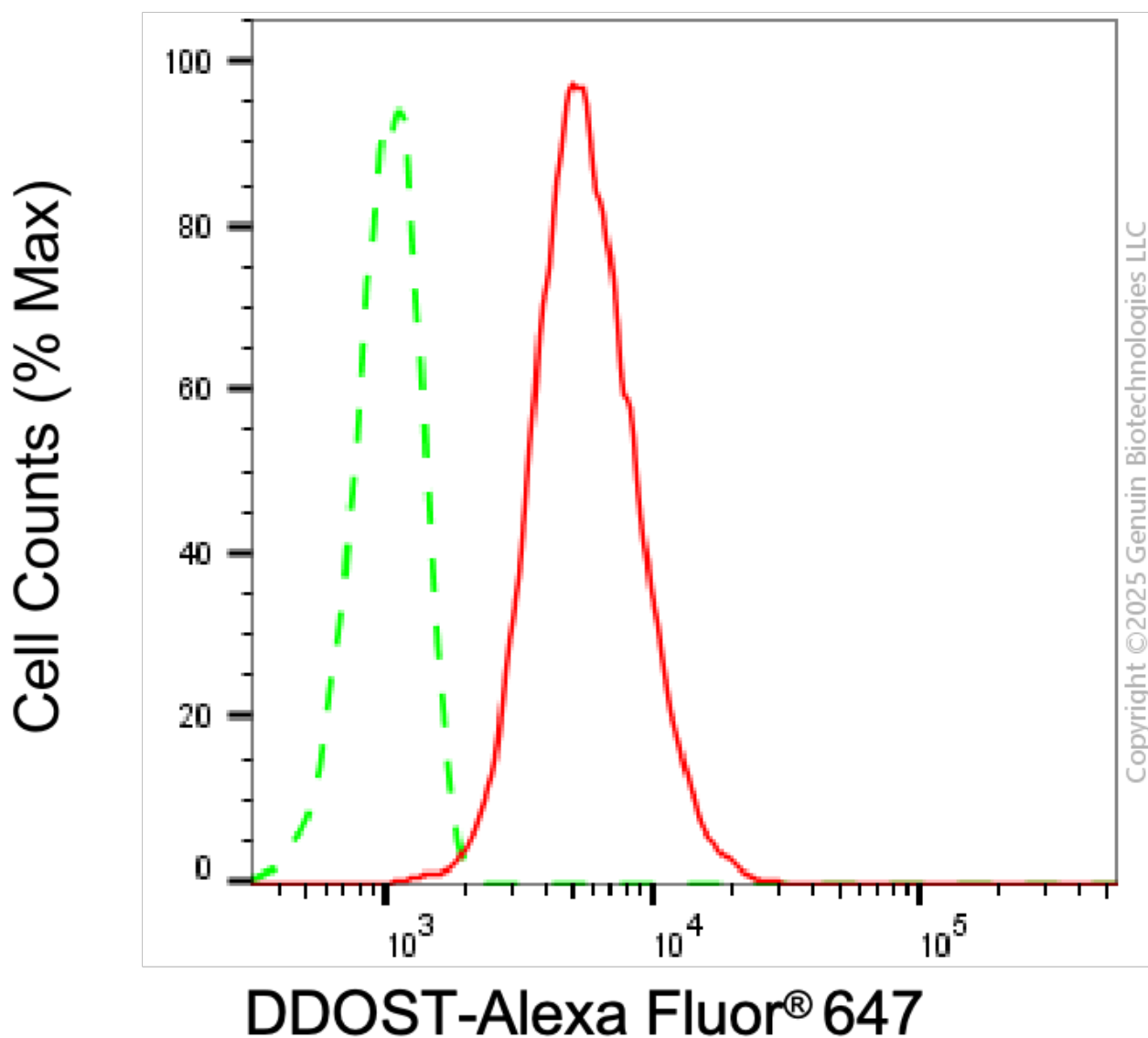
## KD-Validated Anti-DDOST Mouse Monoclonal Antibody

PAGE 2

Flow Cytometry (FCM): 1:1,000

**Note:** This product is for research use only.

### Validation Data



Flow cytometric analysis of DDOST expression in C2C12 cells using anti-DDOST antibody (Cat#63862, 1:1,000). Green, isotype control; red, DDOST.

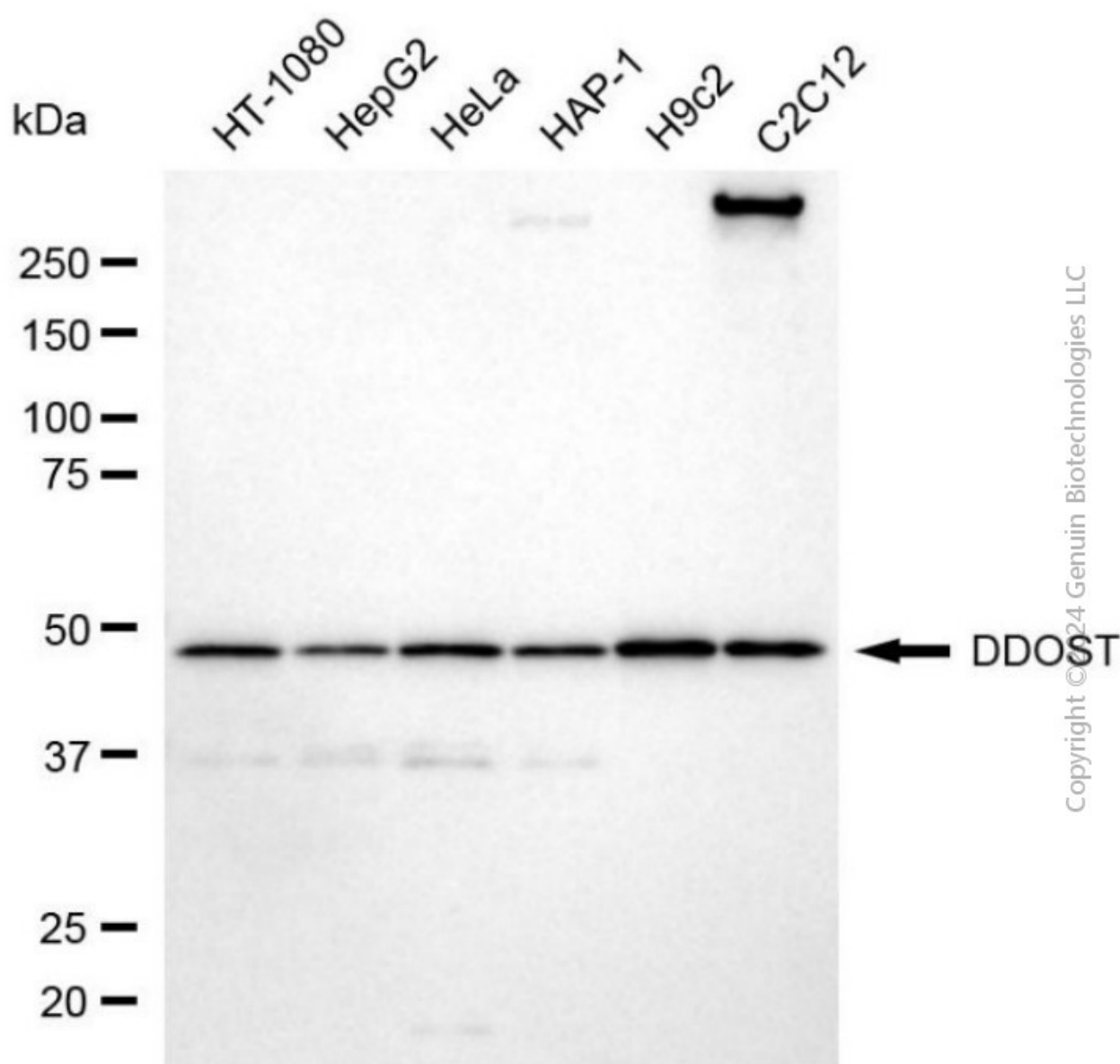
#### SUPPORT

SUPPORT@GENUINBIOTECH.COM  
TEL: +1-540-855-7041

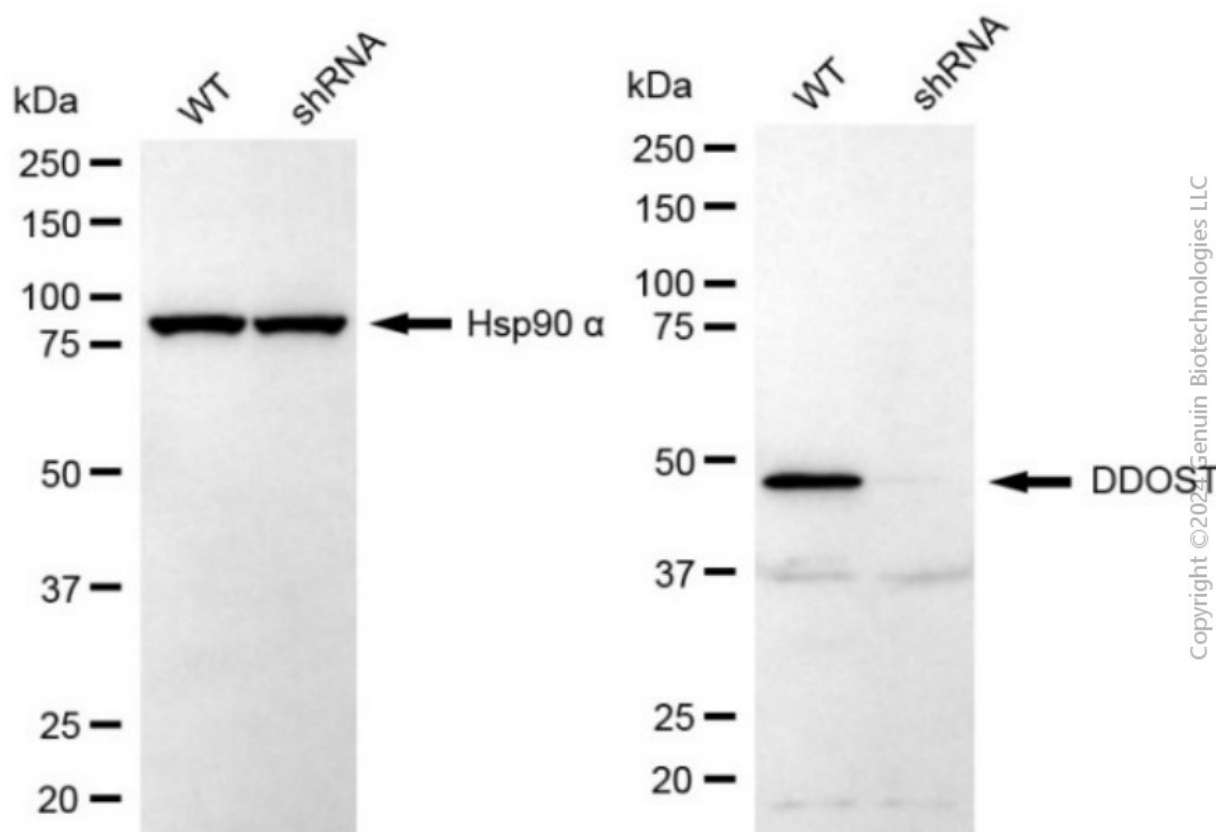
#### ORDERS

SALES@GENUINBIOTECH.COM  
FAX: +1-540-855-7041

[WWW.GENUINBIOTECH.COM](http://WWW.GENUINBIOTECH.COM)



Western blotting analysis using anti-DDOST antibody (Cat#63862). Total cell lysates (20  $\mu$ g) from various cell lines were loaded and separated by SDS-PAGE. The blot was incubated with anti-DDOST antibody (Cat#63862, 1:1,000) and HRP-conjugated goat anti-mouse secondary antibody (Cat#101, 1:20,000) respectively. Image was developed using NaQ™ ECL Substrate Kit (Cat#716).



Western blotting analysis using anti-DDOST antibody (Cat#63862). DDOST expression in wild-type (WT) and DDOST shRNA knockdown (KD) HeLa cells with 20  $\mu$ g of total cell lysates. Hsp90  $\alpha$  serves as a loading control. The blot was incubated with anti-DDOST antibody (Cat#63862, 1:1,000) and HRP-conjugated goat anti-mouse secondary antibody (Cat#101, 1:20,000) respectively. Image was developed using NaQ™ ECL Substrate Kit (Cat#716).