

# KD-Validated Anti-FAF1 Mouse Monoclonal Antibody



**Catalog #: 63863**

## Aliases

FAF1; Fas Associated Factor 1; UBXD12; UBXN3A; HFAP1; CGI-03; HFAP1s; Fas (TNFRSF6) Associated Factor 1; UBX Domain-Containing Protein 12; UBX Domain-Containing Protein 3A; TNFRSF6-Associated Factor 1; FAS-Associated Factor 1; UBX Domain Protein 3A

## Background

Gene Name: FAF1

NCBI Gene Entry: [11124](#)

UniProt Entry: [Q9UNN5](#)

## Application Information

Molecular Weight: Predicted, 74 kDa; observed, 74 kDa

Clonality: Mouse monoclonal antibody

Clone ID: 24GB8245

Species Reactivity: Human, mouse, rat

Applications Tested: Western blotting (WB), flow cytometry (FCM), immunocytochemistry (IC)

## Immunogen

Recombinant protein of human FAF1

## Isotype

Mouse IgG1

## Storage Buffer

Supplied in PBS (pH 7.4) containing 50% glycerol, and 0.02% sodium azide.

## Storage

Store at -20 °C for one year.

## Recommended Dilutions

Western Blotting (WB): 1:500-1:2,500

Immunohistochemistry (IHC): 1:100-1:1,000

Flow Cytometry (FCM) : 1:2,000

**Note:** This product is for research use only.

---

### SUPPORT

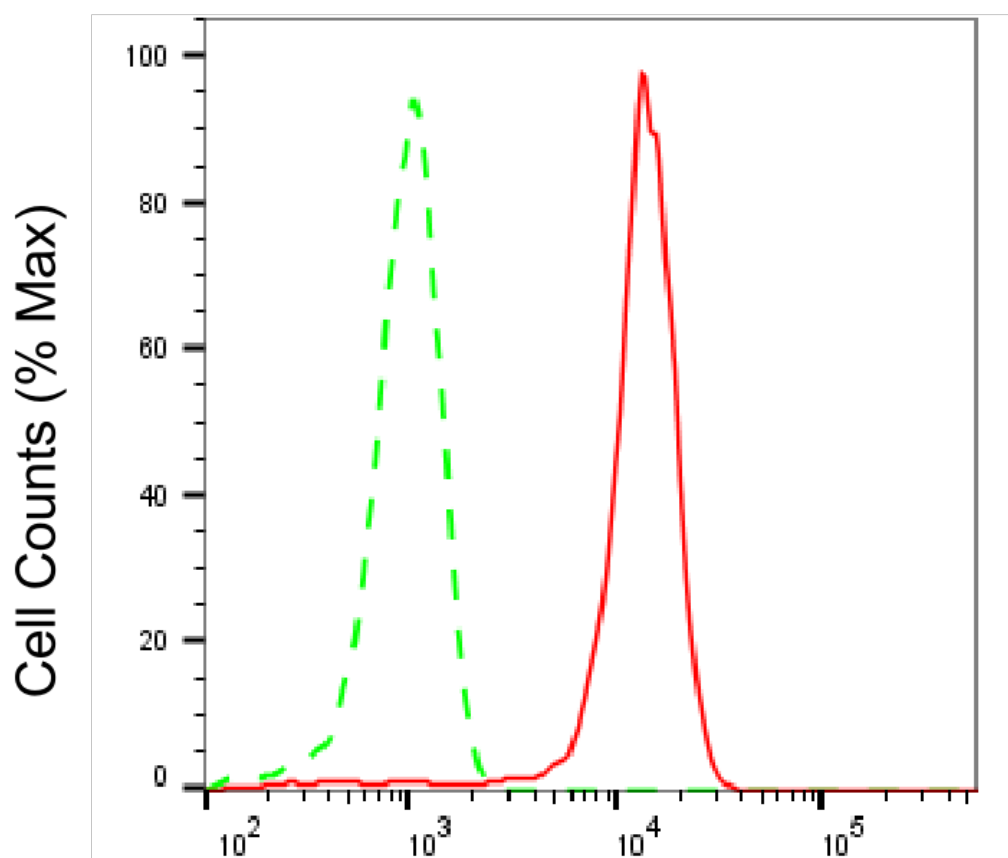
SUPPORT@GENUINBIOTECH.COM  
TEL: +1-540-855-7041

### ORDERS

SALES@GENUINBIOTECH.COM  
FAX: +1-540-855-7041

[WWW.GENUINBIOTECH.COM](http://WWW.GENUINBIOTECH.COM)

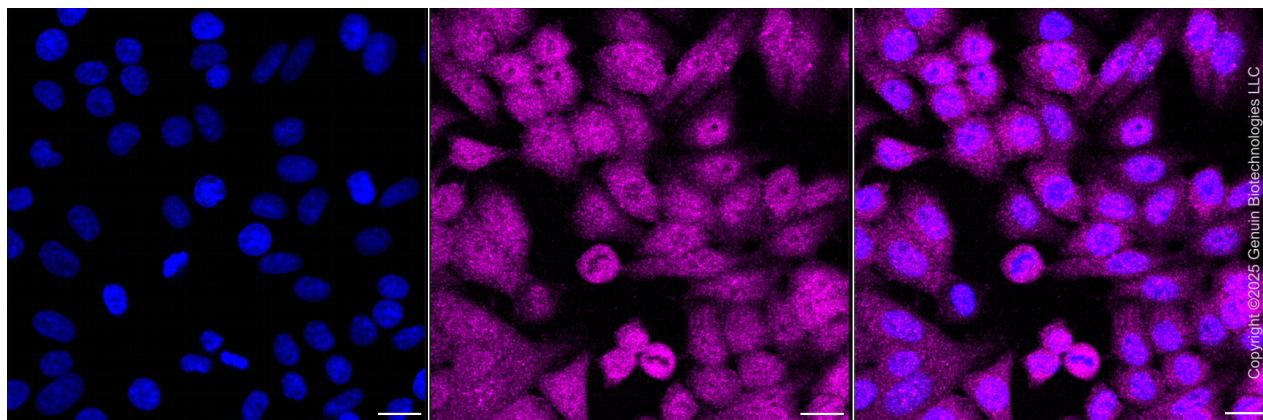
**Validation Data**



Copyright ©2025 Genuin Biotechnologies LLC

**Fas associated factor 1-Alexa Fluor® 647**

Flow cytometric analysis of Fas associated factor 1 expression in HepG2 cells using anti-Fas associated factor 1 antibody (Cat#63863, 1:1,000). Green, isotype control; red, Fas associated factor 1.



Copyright ©2025 Genuin Biotechnologies LLC

Immunocytochemical staining of HepG2 cells with anti-Fas associated factor 1 antibody

**SUPPORT**

SUPPORT@GENUINBIOTECH.COM  
TEL: +1-540-855-7041

**ORDERS**

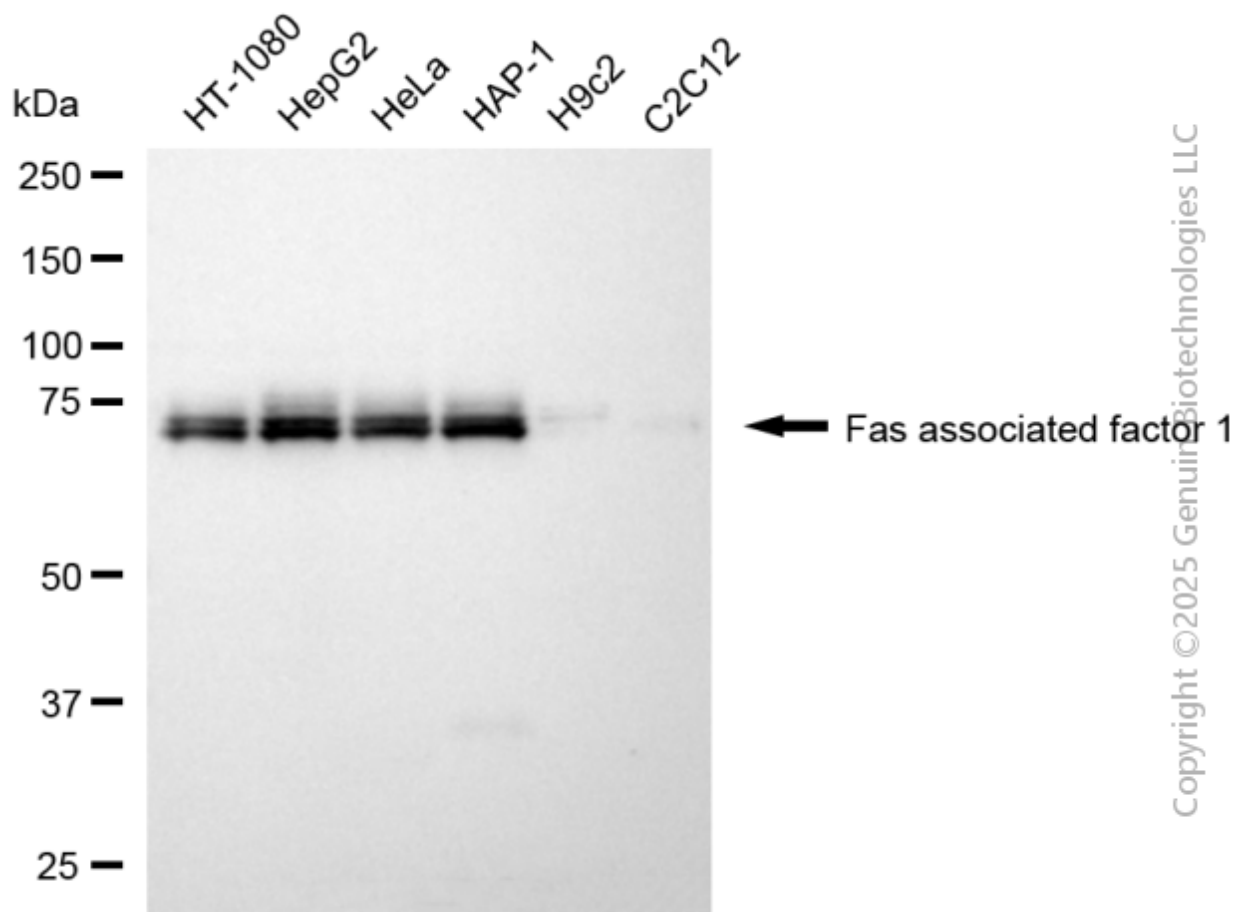
SALES@GENUINBIOTECH.COM  
FAX: +1-540-855-7041

**WWW.GENUINBIOTECH.COM**

## KD-Validated Anti-FAF1 Mouse Monoclonal Antibody

PAGE 3

(Cat#63863, 1:500) . Nuclei were stained blue with DAPI; Fas associated factor 1 was stained magenta with Alexa Fluor® 647. Images were taken using Leica stellaris 5. Protein abundance based on laser Intensity and smart gain: Medium. Scale bar, 20  $\mu$ m.



Copyright ©2025 Genuin Biotechnologies LLC

Western blotting analysis using anti-fas associated factor 1 antibody (Cat#63863). Total cell lysates (30  $\mu$ g) from various cell lines were loaded and separated by SDS-PAGE. The blot was incubated with anti-fas associated factor 1 antibody (Cat#63863, 1:2,500) and HRP-conjugated goat anti-mouse secondary antibody (Cat#101, 1:20,000) respectively. Image was developed using NaQ™ ECL Substrate Kit (Cat#716).

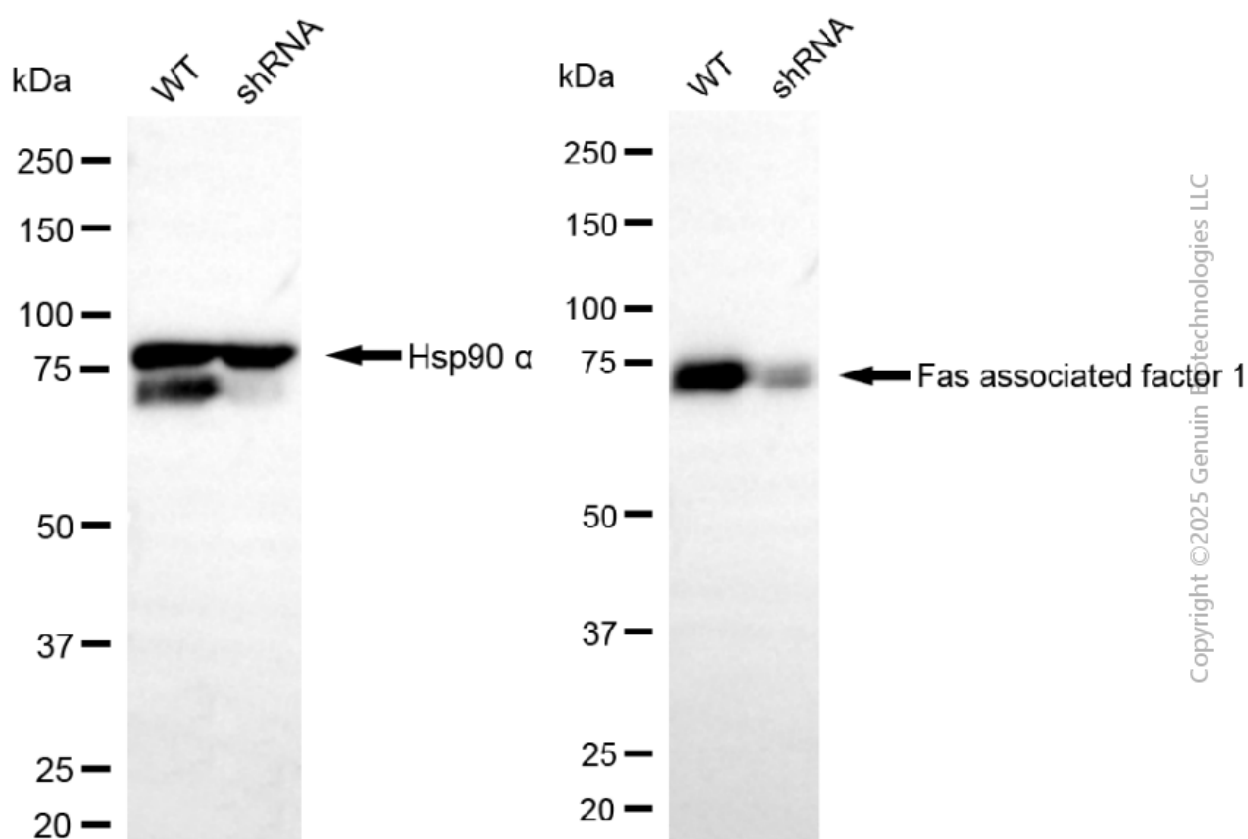
### SUPPORT

SUPPORT@GENUINBIOTECH.COM  
TEL: +1-540-855-7041

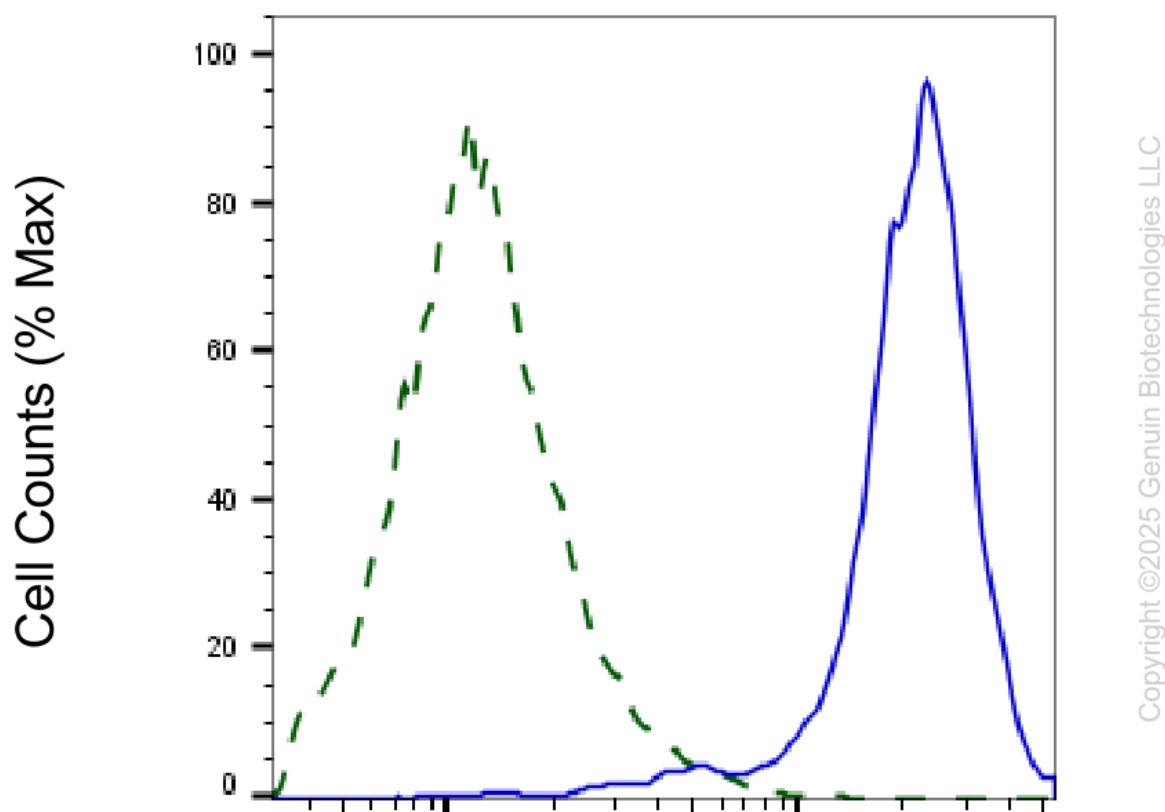
### ORDERS

SALES@GENUINBIOTECH.COM  
FAX: +1-540-855-7041

WWW.GENUINBIOTECH.COM

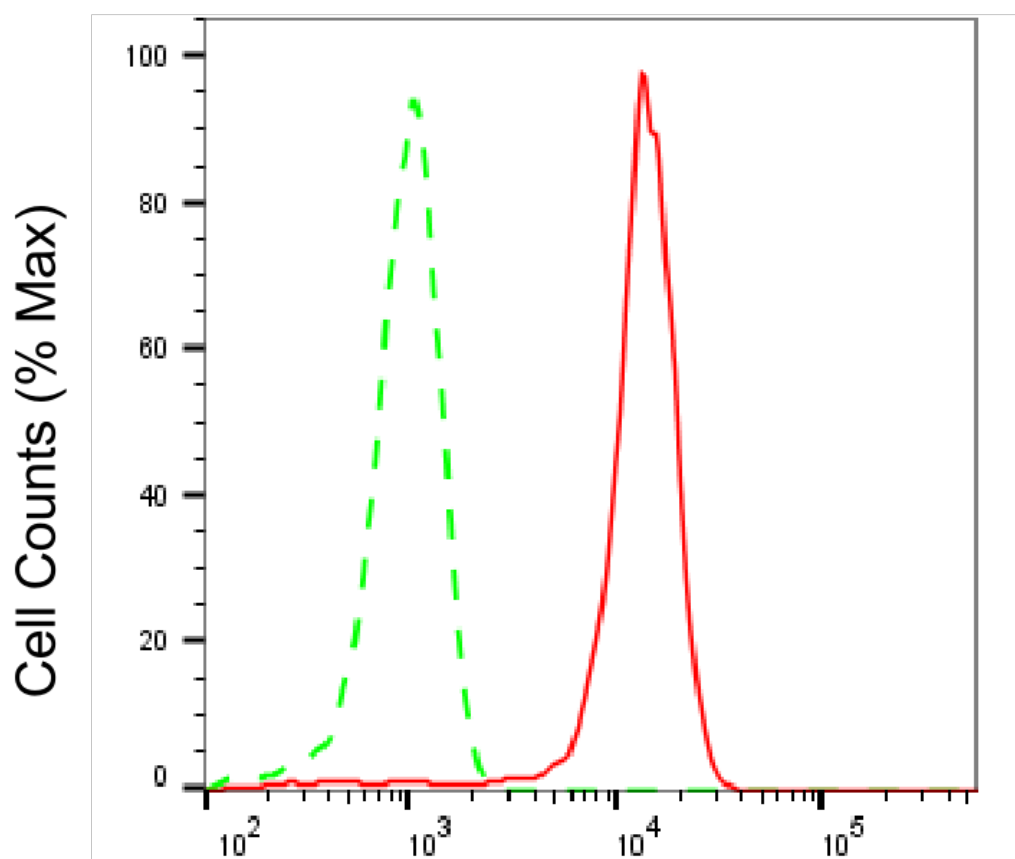


Western blotting analysis using anti-fas associated factor 1 antibody (Cat#63863). Fas associated factor 1 expression in wild type (WT) and fas associated factor 1 (FAF1) shRNA knockdown (KD) HeLa cells with 20 µg of total cell lysates. Hsp90 α serves as a loading control. The blot was incubated with anti-fas associated factor 1 antibody (Cat#63863, 1:2,500) and HRP-conjugated goat anti-mouse secondary antibody (Cat#101, 1:20,000) respectively. Image was developed using NaQ™ ECL Substrate Kit (Cat#716).



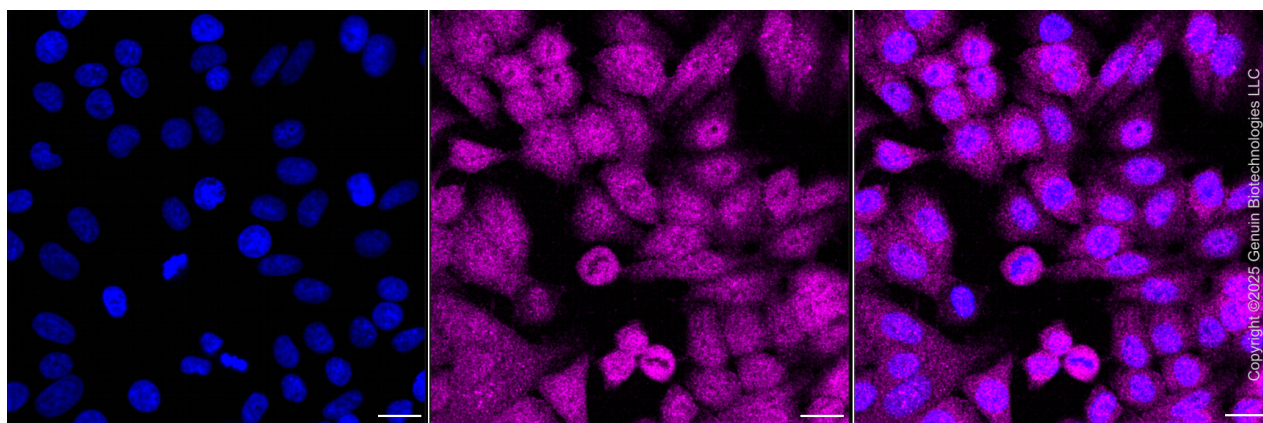
### Fas associated factor 1-Alexa Fluor® 647

Validation of Fas associated factor 1 knockdown using flow cytometry. Wild-type(WT, Blue) and knockdown(KD, Green) HeLa cells were stained with anti-Fas associated factor 1 antibody (Cat#63863, 1:2,000) and analyzed using BD flow cytometer.



## Fas associated factor 1-Alexa Fluor® 647

Flow cytometric analysis of Fas associated factor 1 expression in HepG2 cells using anti-Fas associated factor 1 antibody (Cat#63863, 1:1,000). Green, isotype control; red, Fas associated factor 1.



Immunocytochemical staining of HepG2 cells with anti-Fas associated factor 1 antibody (Cat#63863, 1:500). Nuclei were stained blue with DAPI; Fas associated factor 1 was stained magenta with Alexa Fluor® 647. Images were taken using Leica stellaris 5. Protein abundance

### SUPPORT

SUPPORT@GENUINBIOTECH.COM  
TEL: +1-540-855-7041

### ORDERS

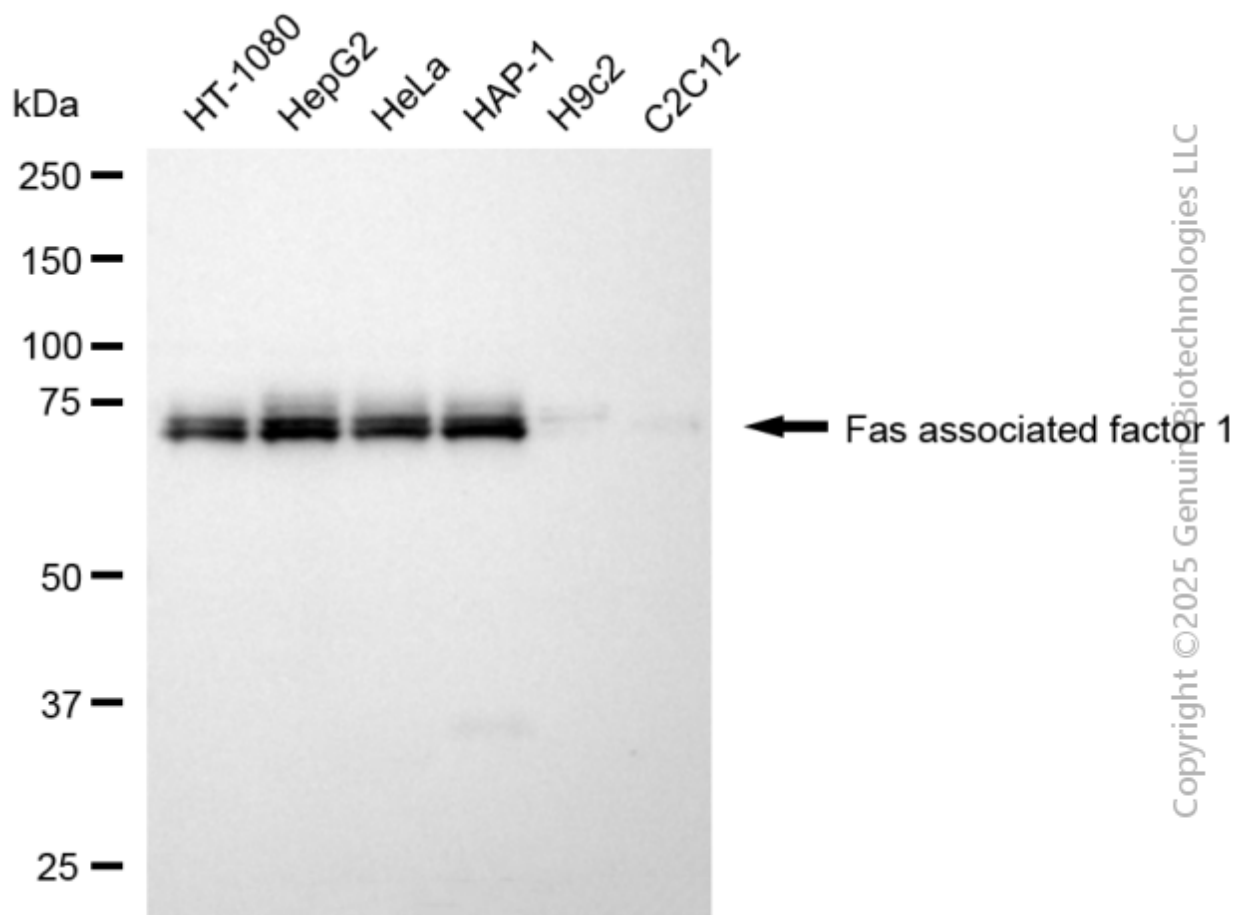
SALES@GENUINBIOTECH.COM  
FAX: +1-540-855-7041

[WWW.GENUINBIOTECH.COM](http://WWW.GENUINBIOTECH.COM)

## KD-Validated Anti-FAF1 Mouse Monoclonal Antibody

PAGE 7

based on laser Intensity and smart gain: Medium. Scale bar, 20  $\mu$ m.



Western blotting analysis using anti-fas associated factor 1 antibody (Cat#63863). Total cell lysates (30  $\mu$ g) from various cell lines were loaded and separated by SDS-PAGE. The blot was incubated with anti-fas associated factor 1 antibody (Cat#63863, 1:2,500) and HRP-conjugated goat anti-mouse secondary antibody (Cat#101, 1:20,000) respectively. Image was developed using NaQ™ ECL Substrate Kit (Cat#716).

### SUPPORT

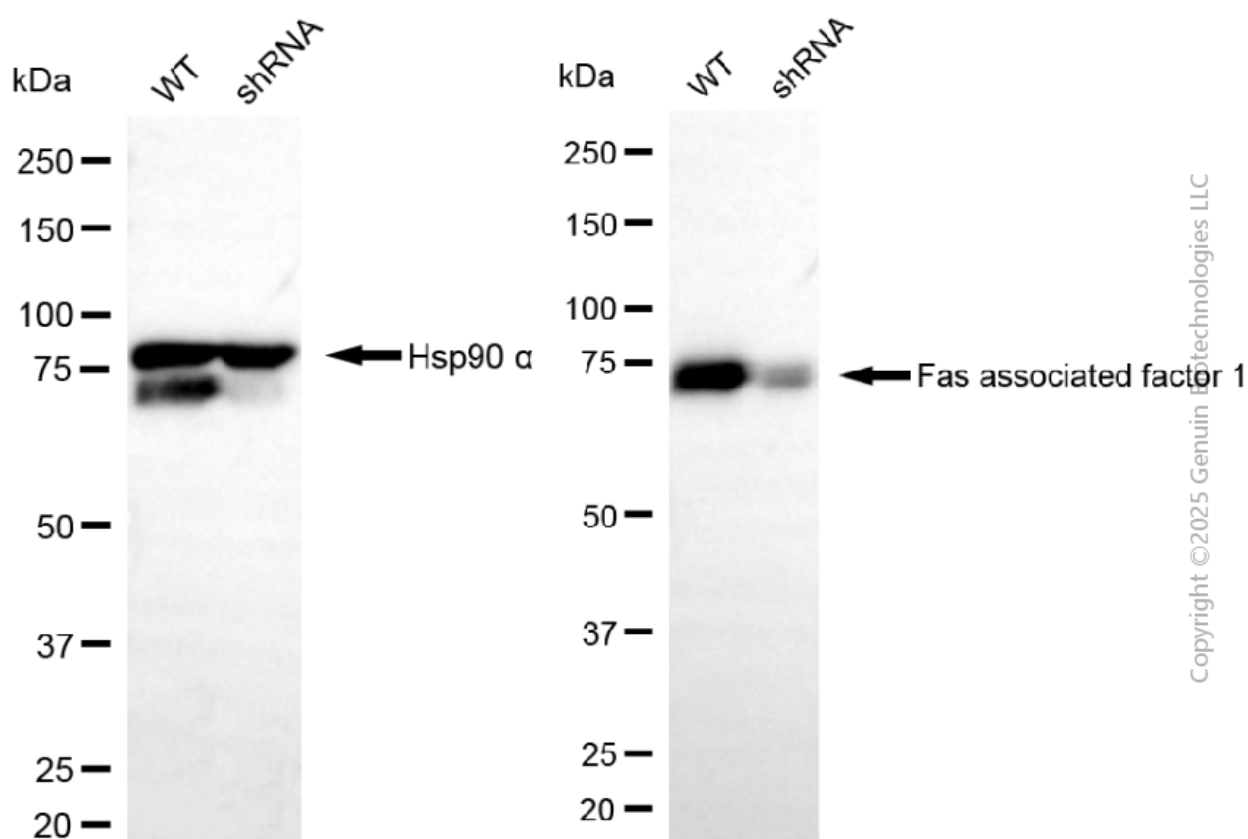
SUPPORT@GENUINBIOTECH.COM  
TEL: +1-540-855-7041

### ORDERS

SALES@GENUINBIOTECH.COM  
FAX: +1-540-855-7041

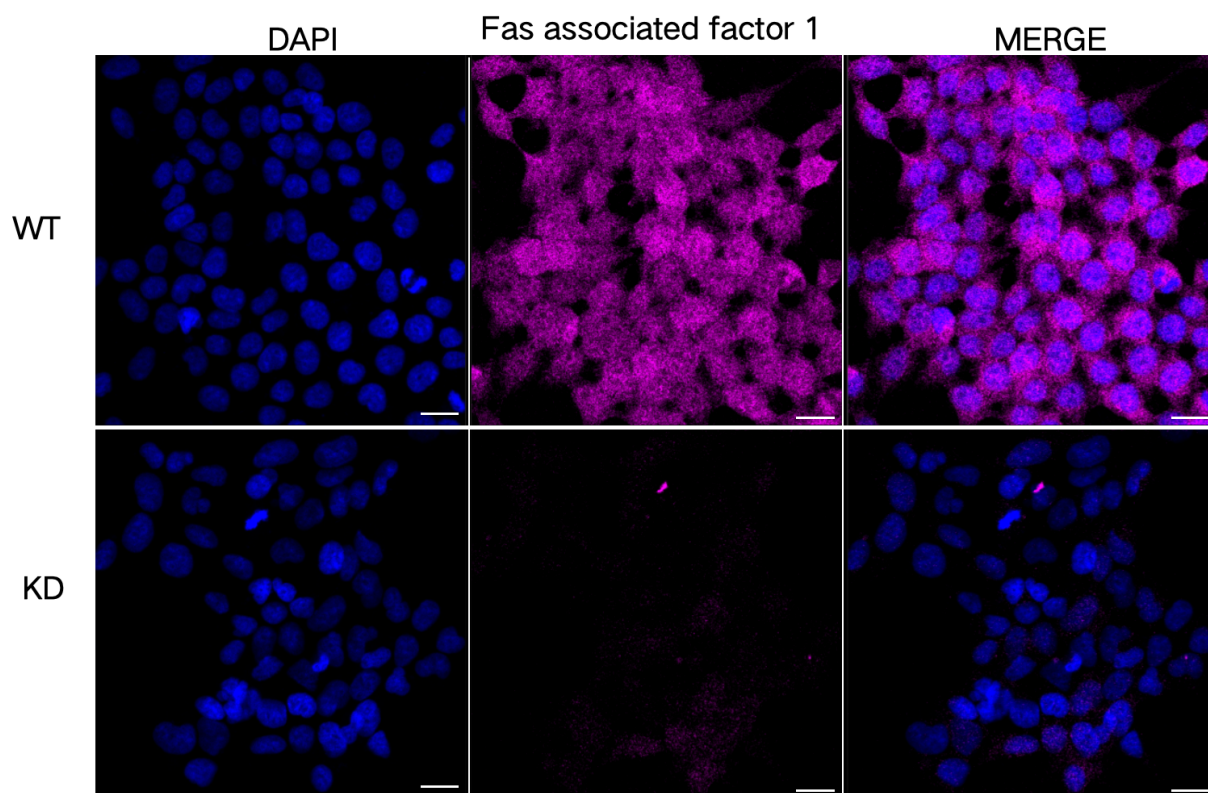
WWW.GENUINBIOTECH.COM





Western blotting analysis using anti-fas associated factor 1 antibody (Cat#63863). Fas associated factor 1 expression in wild type (WT) and fas associated factor 1 (FAF1) shRNA knockdown (KD) HeLa cells with 20 µg of total cell lysates. Hsp90 α serves as a loading control. The blot was incubated with anti-fas associated factor 1 antibody (Cat#63863, 1:2,500) and HRP-conjugated goat anti-mouse secondary antibody (Cat#101, 1:20,000) respectively. Image was developed using NaQ™ ECL Substrate Kit (Cat#716).





Immunocytochemical staining of HeLa cells using anti-Fas associated factor 1 antibody (Cat#63863, 1:1,000), Top panel: wild-type (WT); Bottom panel: Fas associated factor 1 shRNA knockdown (KD). Nuclei were stained blue with DAPI; Fas associated factor 1 was stained magenta with Alexa Fluor® 647. Scale bar, 20  $\mu$ m.