

KD-Validated Anti-ECT2 Mouse Monoclonal Antibody



Catalog #: 63867

Aliases

ECT2; Epithelial Cell Transforming 2; ARHGEF31; Epithelial Cell-Transforming Sequence 2 Oncogene; Protein ECT2; Epithelial Cell Transforming Sequence 2 Oncogene

Background

Gene Name: ECT2

NCBI Gene Entry: [1894](#)

UniProt Entry: [Q9H8V3](#)

Application Information

Molecular Weight: Predicted, 104 kDa; observed, 104 kDa

Clonality: Mouse monoclonal antibody

Clone ID: 24GB8265

Species Reactivity: Human

Applications Tested: Western blotting (WB), flow cytometry (FCM), immunocytochemistry (IC)

Immunogen

Recombinant protein of human ECT2

Isotype

Mouse IgG1

Storage Buffer

Supplied in PBS (pH 7.4) containing 50% glycerol, and 0.02% sodium azide.

Storage

Store at -20 °C for one year.

Recommended Dilutions

Western Blotting (WB): 1:1,000-1:5,000

Flow Cytometry (FCM): 1:1,000

Immunocytochemistry (IC): 1:100-1:1,000

Note: This product is for research use only.

Validation Data

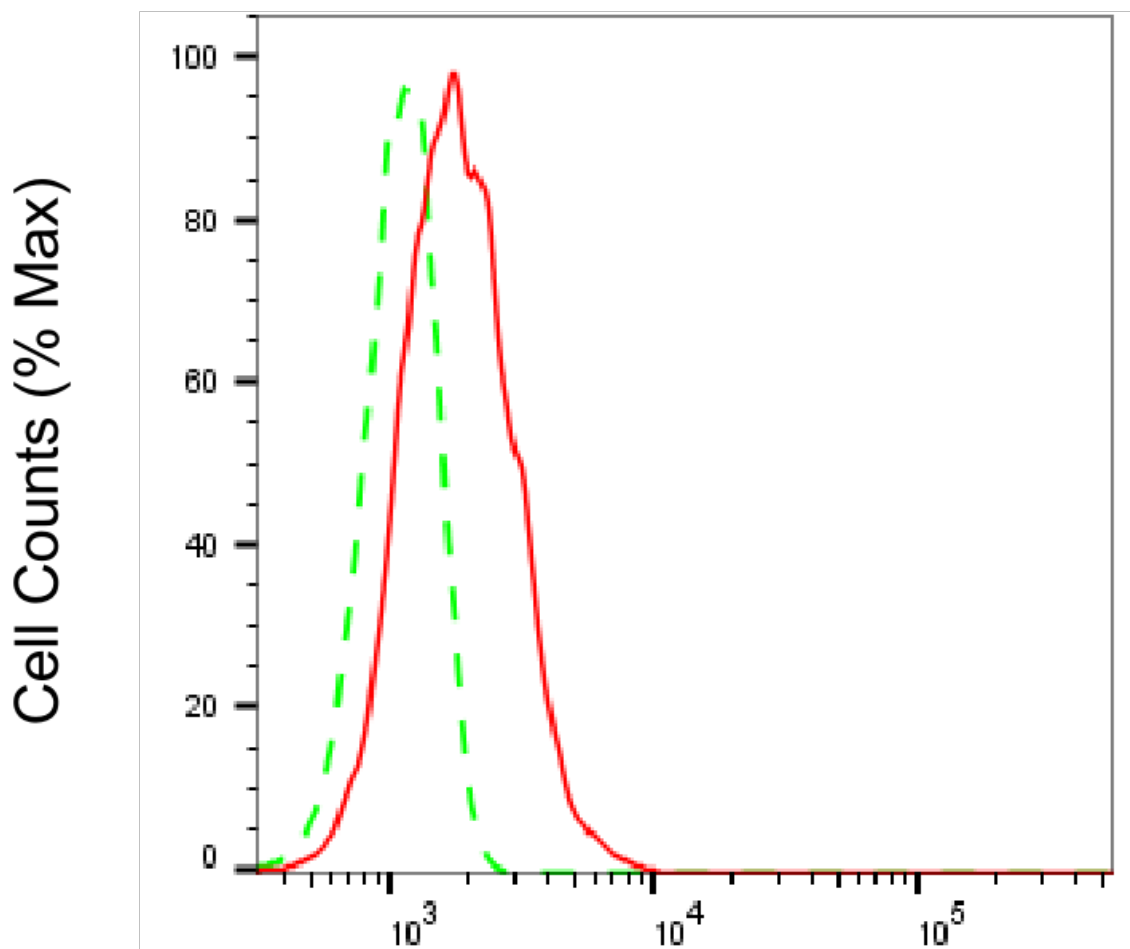
SUPPORT

SUPPORT@GENUINBIOTECH.COM
TEL: +1-540-855-7041

ORDERS

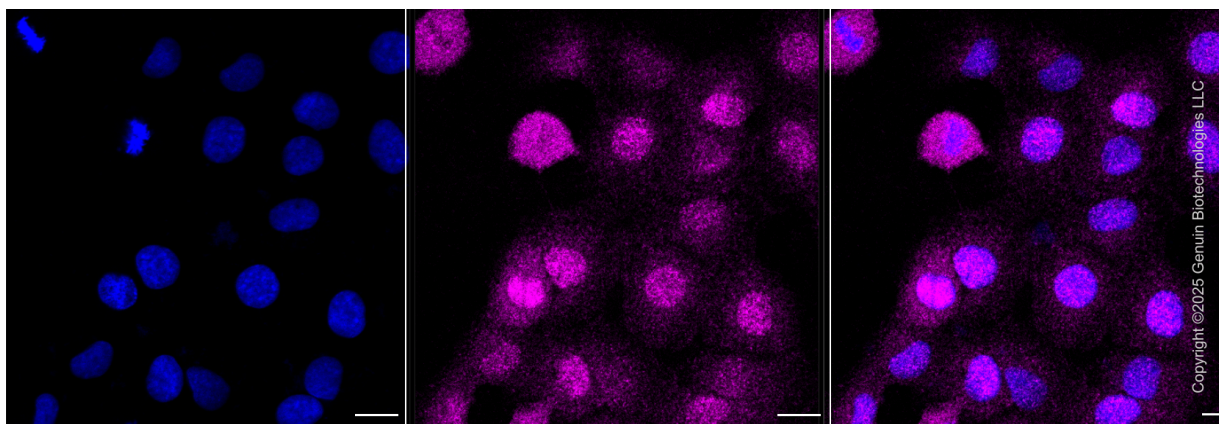
SALES@GENUINBIOTECH.COM
FAX: +1-540-855-7041

WWW.GENUINBIOTECH.COM



Epithelial cell transforming 2-Alexa Fluor® 647

Flow cytometric analysis of Epithelial cell transforming 2 expression in HT-1080 cells using anti-Epithelial cell transforming 2 antibody (Cat#63867, 1:1,000). Green, isotype control; red, Epithelial cell transforming 2.



Immunocytochemical staining of HepG2 cells with anti-Epithelial cell transforming 2 antibody (Cat#63867, 1:500). Nuclei were stained blue with DAPI; Epithelial cell transforming 2 was

SUPPORT

SUPPORT@GENUINBIOTECH.COM
TEL: +1-540-855-7041

ORDERS

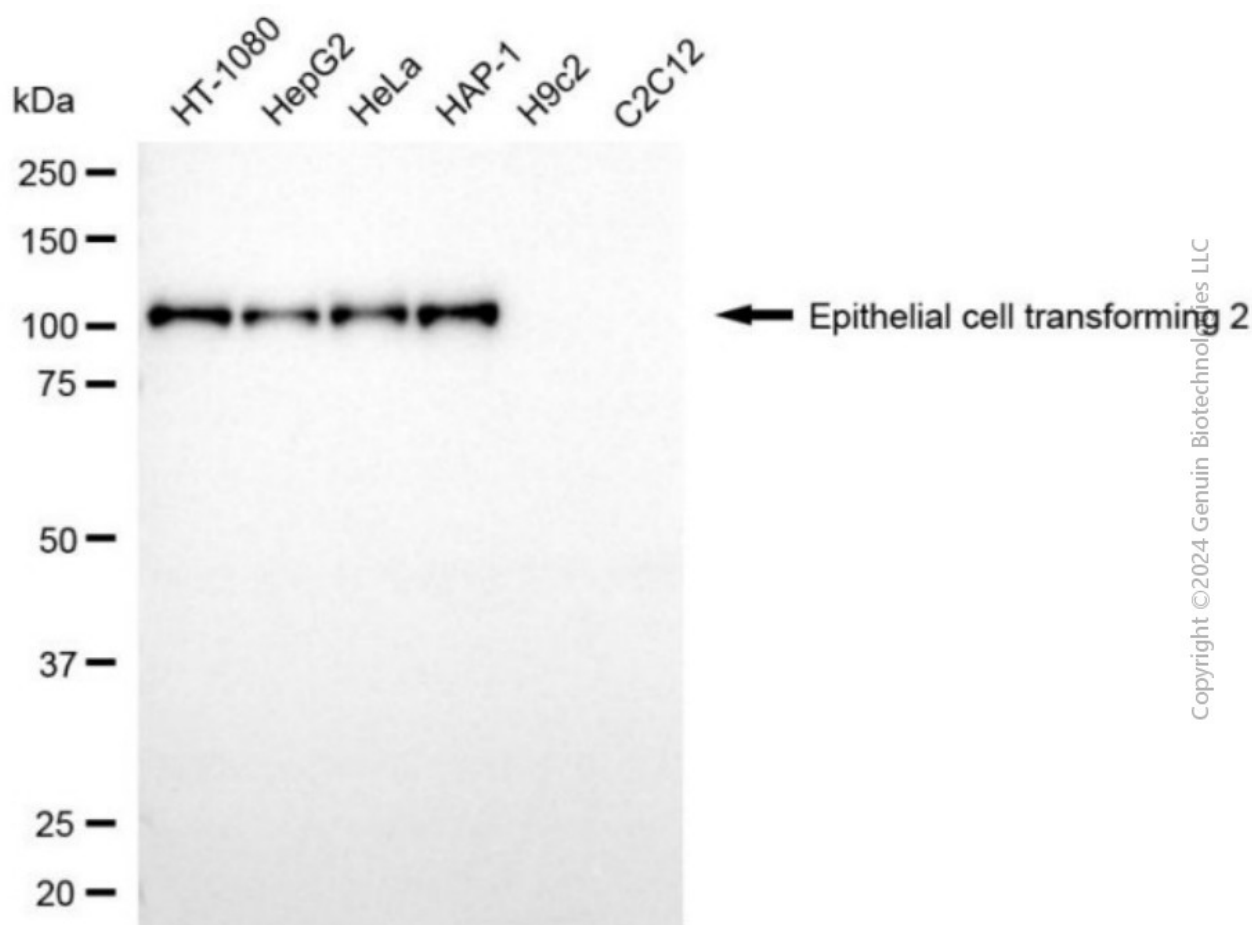
SALES@GENUINBIOTECH.COM
FAX: +1-540-855-7041

WWW.GENUINBIOTECH.COM

KD-Validated Anti-ECT2 Mouse Monoclonal Antibody

PAGE 3

stained magenta with Alexa Fluor® 647. Images were taken using Leica stellaris 5. Protein abundance based on laser Intensity and smart gain: Low. Scale bar, 20 μ m.



Western blotting analysis using anti-epithelial cell transforming 2 antibody (Cat#63867). Total cell lysates (30 μ g) from various cell lines were loaded and separated by SDS-PAGE. The blot was incubated with anti-epithelial cell transforming 2 antibody (Cat#63867, 1:5,000) and HRP-conjugated goat anti-mouse secondary antibody (Cat#101, 1:20,000) respectively. Image was developed using FeQTM ECL Substrate Kit (Cat#226).

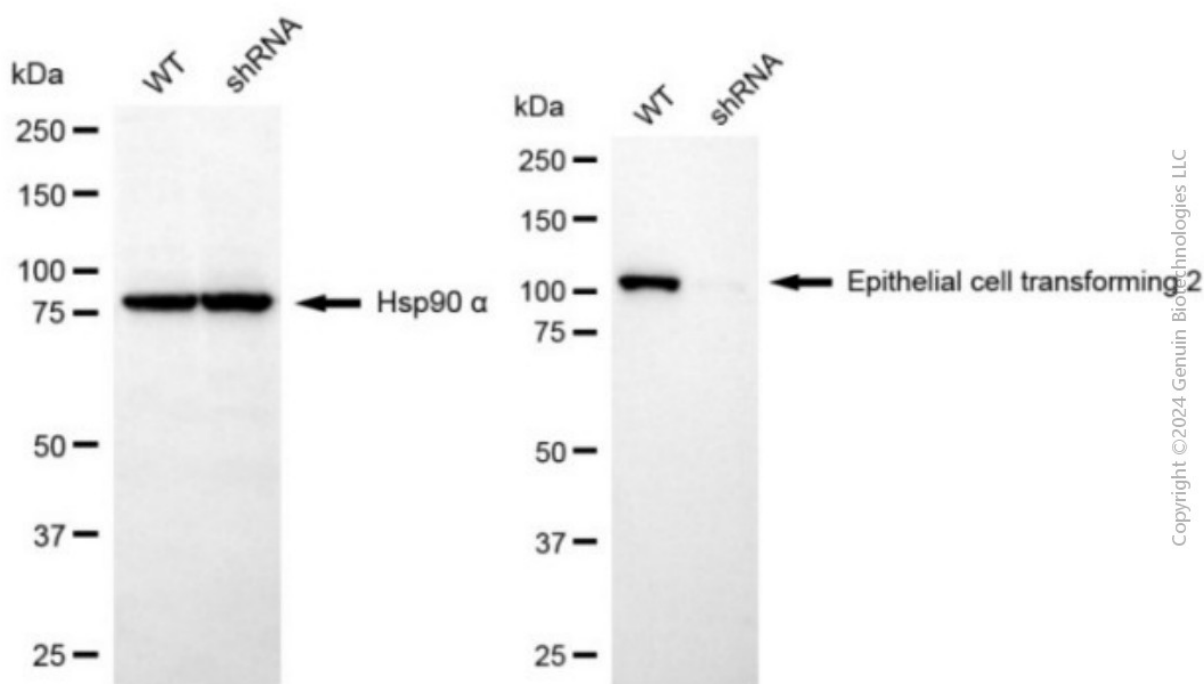
SUPPORT

SUPPORT@GENUINBIOTECH.COM
TEL: +1-540-855-7041

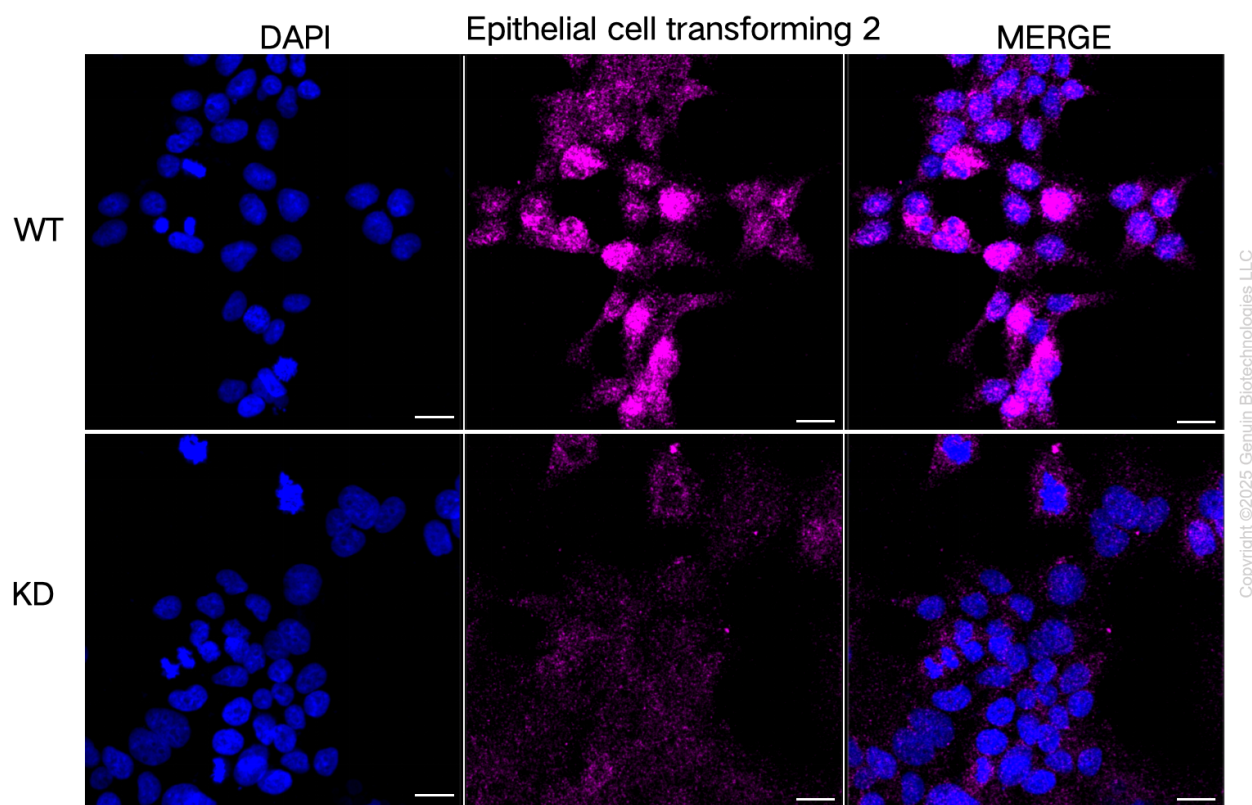
ORDERS

SALES@GENUINBIOTECH.COM
FAX: +1-540-855-7041

WWW.GENUINBIOTECH.COM



Western blotting analysis using anti-epithelial cell transforming 2 antibody (Cat#63867). Epithelial cell transforming 2 expression in wild type (WT) and epithelial cell transforming 2 (ECT2) shRNA knockdown (KD) HeLa cells with 20 μ g of total cell lysates. Hsp90 α serves as a loading control. The blot was incubated with anti-epithelial cell transforming 2 antibody (Cat#63867, 1:5,000) and HRP-conjugated goat anti-mouse secondary antibody (Cat#101, 1:20,000) respectively. Image was developed using NaQ™ ECL Substrate Kit (Cat#716).



Immunocytochemical staining of HeLa cells using anti-Epithelial cell transforming 2 antibody (Cat#63867, 1:1,000), Top panel: wild-type (WT); Bottom panel: Epithelial cell transforming 2 shRNA knockdown (KD). Nuclei were stained blue with DAPI; Epithelial cell transforming 2 was stained magenta with Alexa Fluor® 647. Scale bar, 20 μ m.