

KD-Validated Anti-EXOSC1 Mouse Monoclonal Antibody



Catalog #: 63872

Aliases

EXOSC1; Exosome Component 1; CSL4; CGI-108; Csl4p; Ski4p; SKI4; P13; Exosome Complex Component CSL4; HCsl4p; Homolog Of Yeast Exosomal Core Protein CSL4; CSL4 Exosomal Core Protein Homolog (Yeast); 3'-5' Exoribonuclease CSL4 Homolog; Exosomal Core Protein CSL4; PCH1F

Background

Gene Name: EXOSC1

NCBI Gene Entry: [51013](#)

UniProt Entry: [Q9Y3B2](#)

Application Information

Molecular Weight: Predicted, 21 kDa; observed, 21 kDa

Clonality: Mouse monoclonal antibody

Clone ID: 24GB8290

Species Reactivity: Human, mouse, rat

Applications Tested: Western blotting (WB), flow cytometry (FCM), immunocytochemistry (IC)

Immunogen

Recombinant protein of human EXOSC1

Isotype

Mouse IgG1

Storage Buffer

Supplied in PBS (pH 7.4) containing 50% glycerol, and 0.02% sodium azide.

Storage

Store at -20 °C for one year.

Recommended Dilutions

Western Blotting (WB): 1:500-1:2,500

Flow Cytometry (FCM): 1:1,000

Immunocytochemistry (IC): 1:100-1:1,000

SUPPORT

SUPPORT@GENUINBIOTECH.COM
TEL: +1-540-855-7041

ORDERS

SALES@GENUINBIOTECH.COM
FAX: +1-540-855-7041

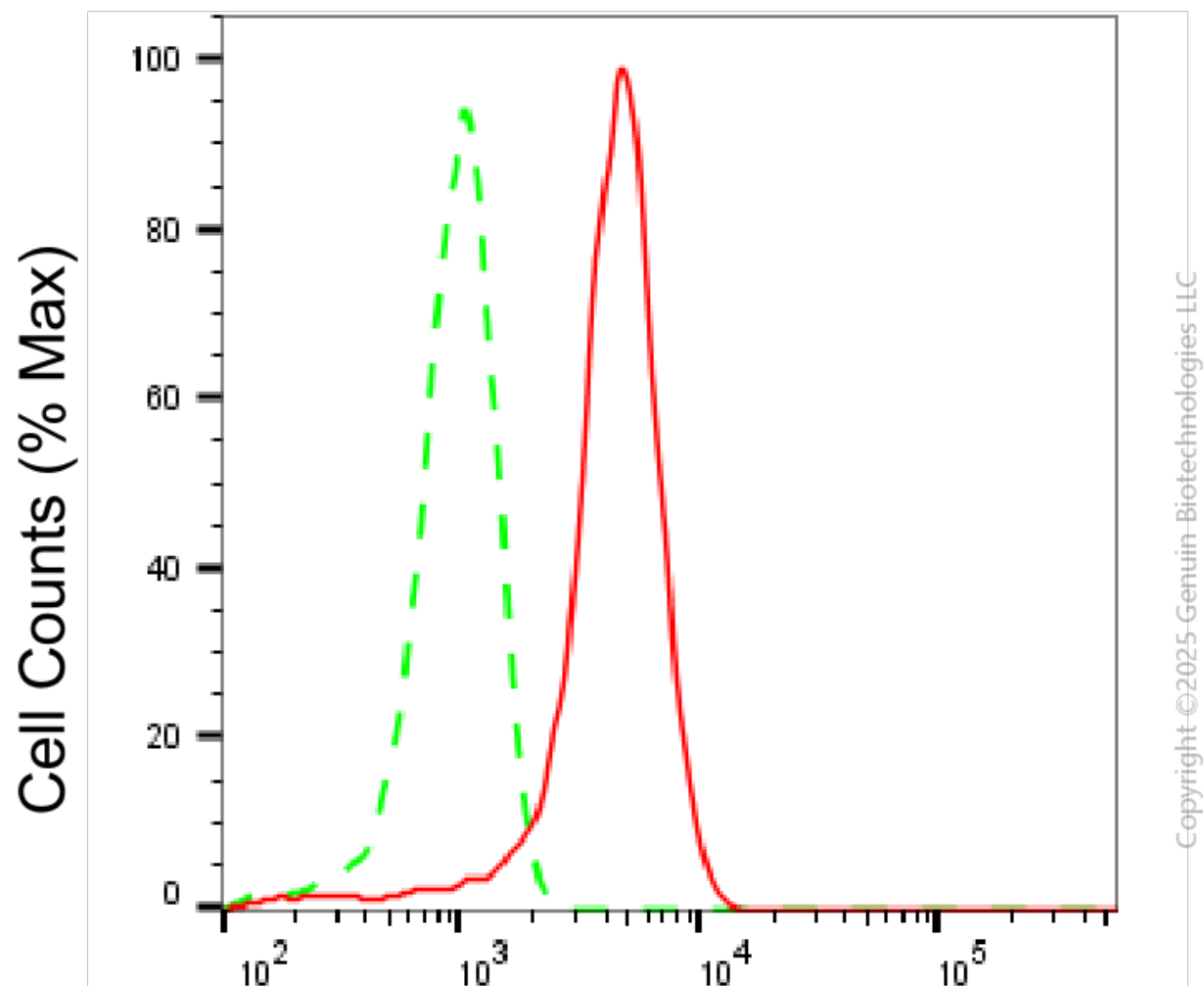
WWW.GENUINBIOTECH.COM

KD-Validated Anti-EXOSC1 Mouse Monoclonal Antibody

PAGE 2

Note: This product is for research use only.

Validation Data



Exosome component 1-Alexa Fluor® 647

Flow cytometric analysis of Exosome component 1 expression in HepG2 cells using anti-Exosome component 1 antibody (Cat#63872, 1:1,000). Green, isotype control; red, Exosome component 1.

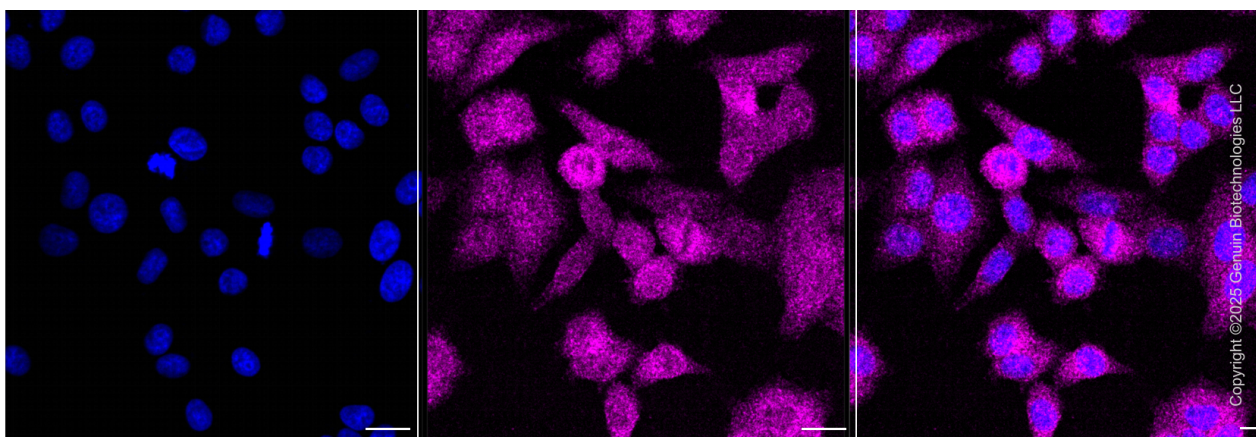
SUPPORT

SUPPORT@GENUINBIOTECH.COM
TEL: +1-540-855-7041

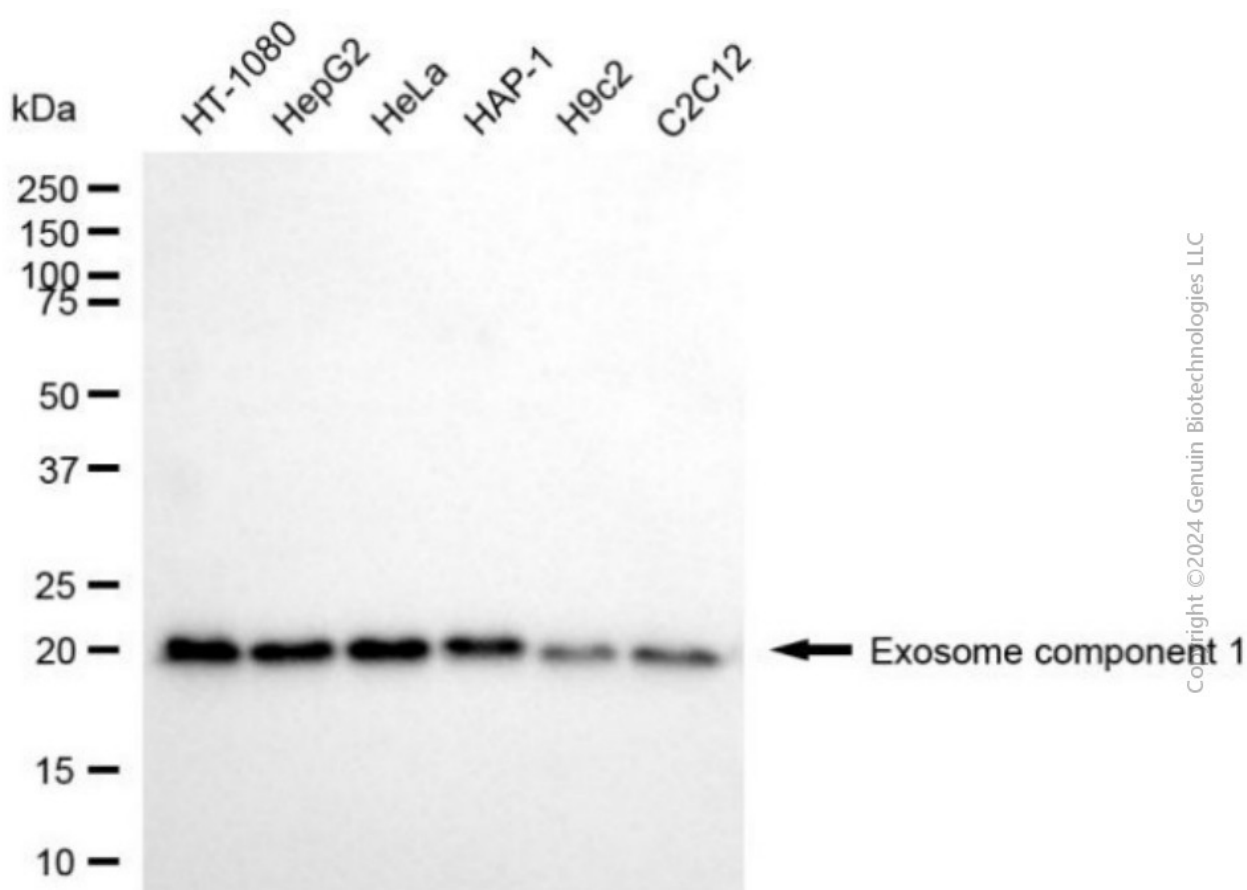
ORDERS

SALES@GENUINBIOTECH.COM
FAX: +1-540-855-7041

WWW.GENUINBIOTECH.COM



Immunocytochemical staining of HepG2 cells with anti-Exosome component 1 antibody (Cat#63872, 1:500). Nuclei were stained blue with DAPI; Exosome component 1 was stained magenta with Alexa Fluor® 647. Images were taken using Leica stellaris 5. Protein abundance based on laser Intensity and smart gain: Low. Scale bar, 20 μ m.

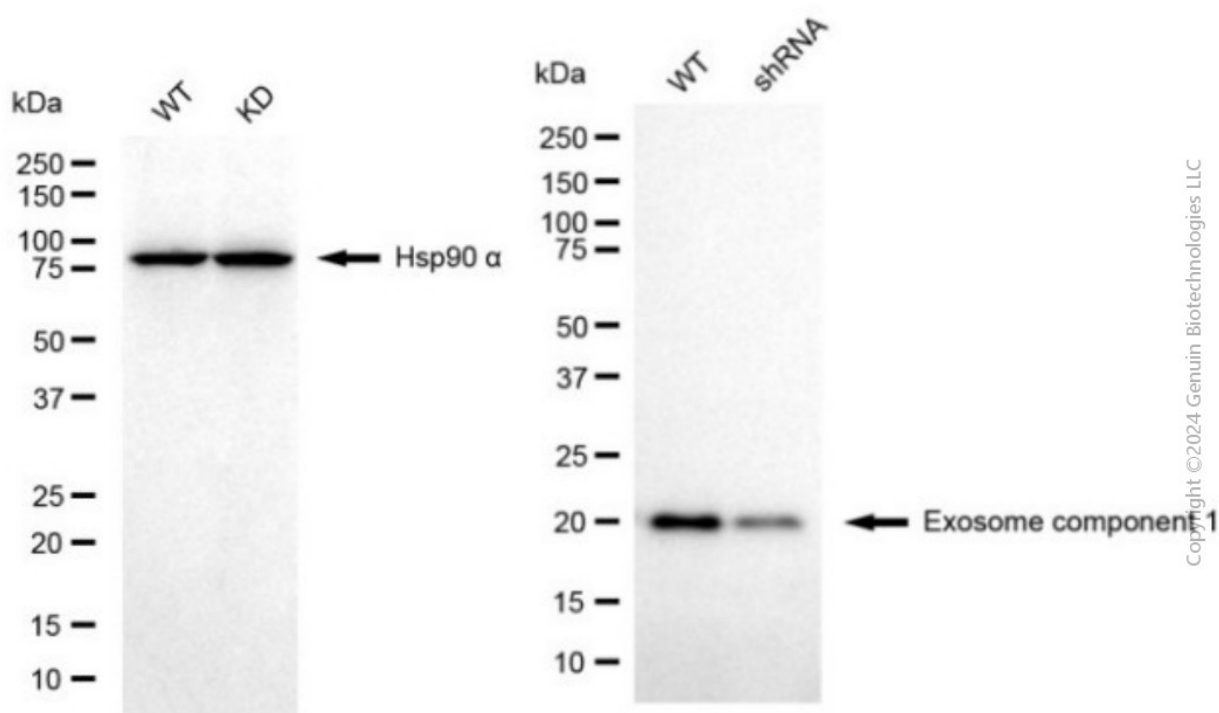


Western blotting analysis using anti-exosome component 1 antibody (Cat#63872). Total cell lysates (30 μ g) from various cell lines were loaded and separated by SDS-PAGE. The blot was incubated with anti-exosome component 1 antibody (Cat#63872, 1:2,500) and HRP-conjugated goat anti-mouse secondary antibody (Cat#101, 1:20,000) respectively. Image was developed using

KD-Validated Anti-EXOSC1 Mouse Monoclonal Antibody

PAGE 4

NaQ™ ECL Substrate Kit (Cat#716).



Western blotting analysis using anti-exosome component 1 antibody (Cat#63872). Exosome component 1 expression in wild-type (WT) and exosome component 1 (EXOSC1) shRNA knockdown (KD) HeLa cells with 20 µg of total cell lysates. Hsp90 α serves as a loading control. The blot was incubated with anti-exosome component 1 antibody (Cat#63872, 1:2,500) and HRP-conjugated goat anti-mouse secondary antibody (Cat#101, 1:20,000) respectively. Image was developed using FeQ™ ECL Substrate Kit (Cat#226).

SUPPORT

SUPPORT@GENUINBIOTECH.COM
TEL: +1-540-855-7041

ORDERS

SALES@GENUINBIOTECH.COM
FAX: +1-540-855-7041

WWW.GENUINBIOTECH.COM