

KD-Validated Anti-FBXO22 Mouse Monoclonal Antibody



Catalog #: 63878

Aliases

FBXO22; F-Box Protein 22; FBX22; F-Box Only Protein 22; FISTC1; FIST Domain Containing 1; F-Box Protein FBX22p44

Background

Gene Name: FBXO22

NCBI Gene Entry: [26263](#)

UniProt Entry: [Q8NEZ5](#)

Application Information

Molecular Weight: Predicted, 45 kDa; observed, 45 kDa

Clonality: Mouse monoclonal antibody

Clone ID: 24GB8320

Species Reactivity: Human, mouse, rat

Applications Tested: Western blotting (WB), flow cytometry (FCM)

Immunogen

Recombinant protein of human FBXO22

Isotype

Mouse IgG1

Storage Buffer

Supplied in PBS (pH 7.4) containing 50% glycerol, and 0.02% sodium azide.

Storage

Store at -20 °C for one year.

Recommended Dilutions

Western Blotting (WB): 1:500-1:2,500

Flow Cytometry (FCM): 1:1,000

Note: This product is for research use only.

Validation Data

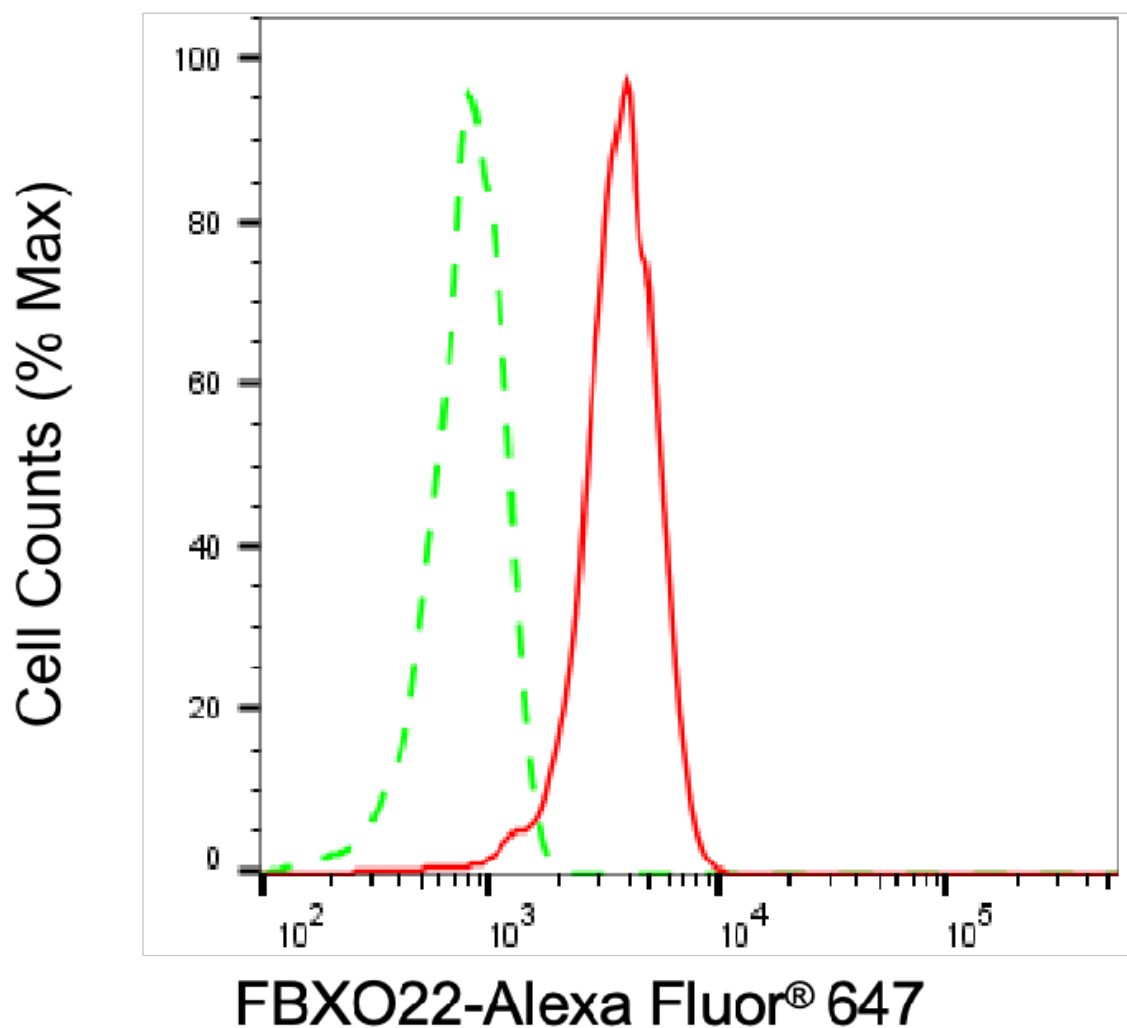
SUPPORT

SUPPORT@GENUINBIOTECH.COM
TEL: +1-540-855-7041

ORDERS

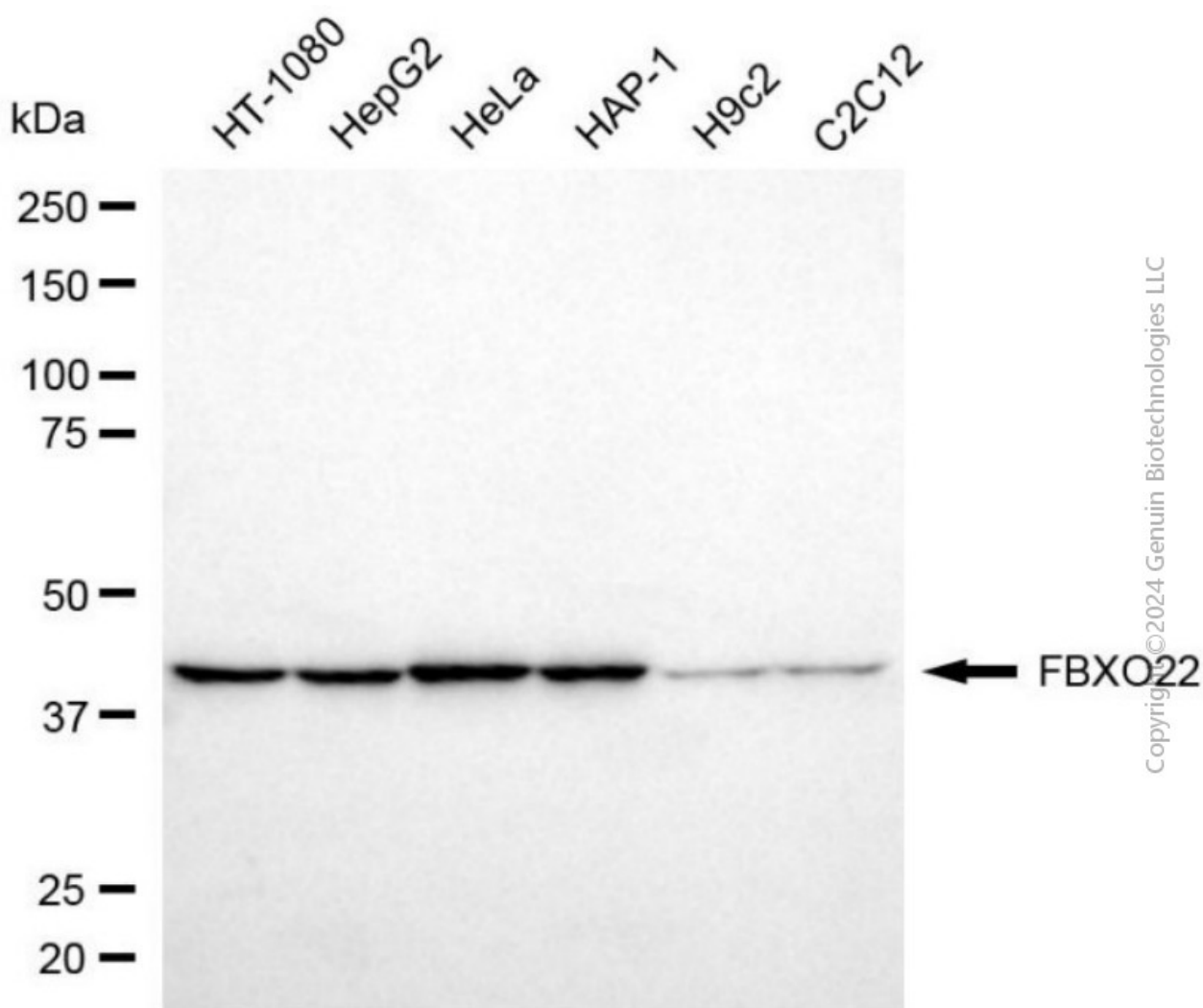
SALES@GENUINBIOTECH.COM
FAX: +1-540-855-7041

WWW.GENUINBIOTECH.COM

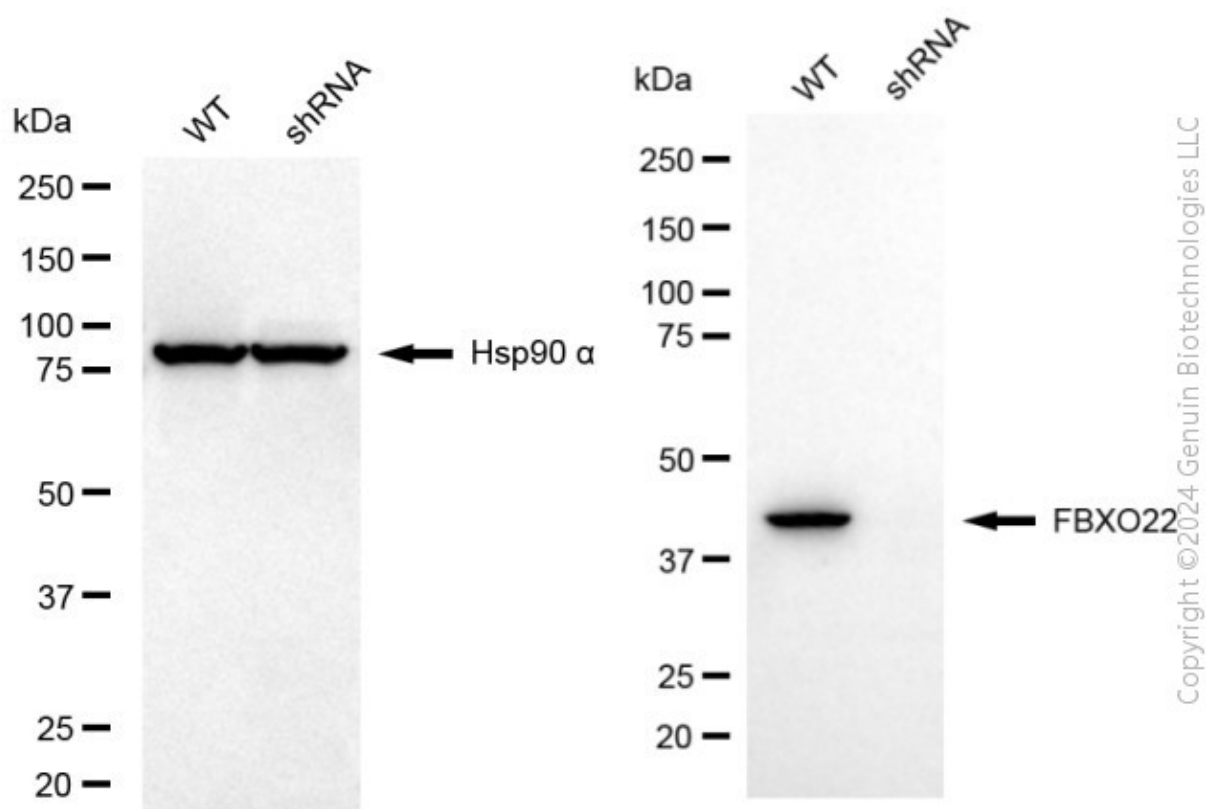


Copyright ©2025 Genuin Biotechnologies LLC

Flow cytometric analysis of FBXO22 expression in HeLa cells using anti-FBXO22 antibody (Cat#63878, 1:1,000). Green, isotype control; red, FBXO22.



Western blotting analysis using anti-FBXO22 antibody (Cat#63878). Total cell lysates (30 μ g) from various cell lines were loaded and separated by SDS-PAGE. The blot was incubated with anti-FBXO22 antibody (Cat#63878, 1:2,500) and HRP-conjugated goat anti-mouse secondary antibody (Cat#101, 1:20,000) respectively. Image was developed using NaQ™ ECL Substrate Kit (Cat#716).



Western blotting analysis using anti-FBXO22 antibody (Cat#63878). FBXO22 expression in wild type (WT) and FBXO22 shRNA knockdown (KD) HeLa cells with 20 μ g of total cell lysates. Hsp90 α serves as a loading control. The blot was incubated with anti-FBXO22 antibody (Cat#63878, 1:2,500) and HRP-conjugated goat anti-mouse secondary antibody (Cat#101, 1:20,000) respectively. Image was developed using NaQ™ ECL Substrate Kit (Cat#716).